



Sega Genesis II Teardown

An easy way to safely take apart your Genesis.

Written By: Frankie



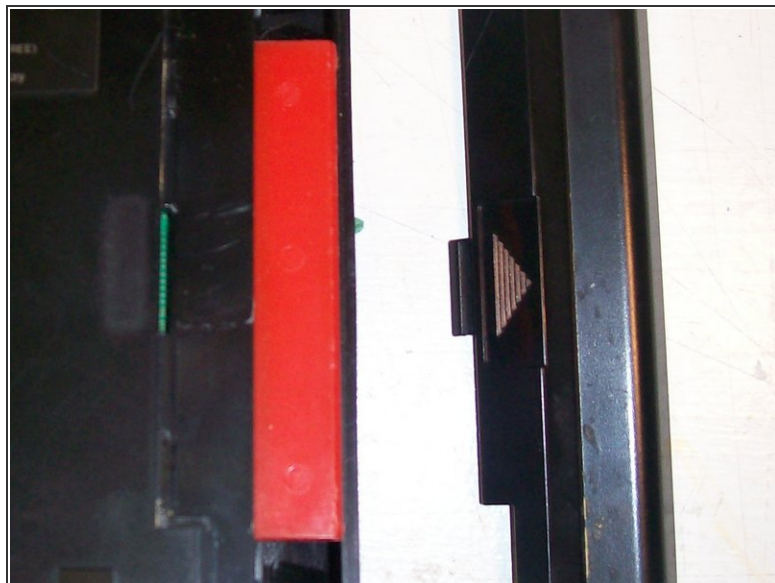
INTRODUCTION

Alright. This guide is a teardown to show the safest and easiest way to take apart your genesis.

TOOLS:

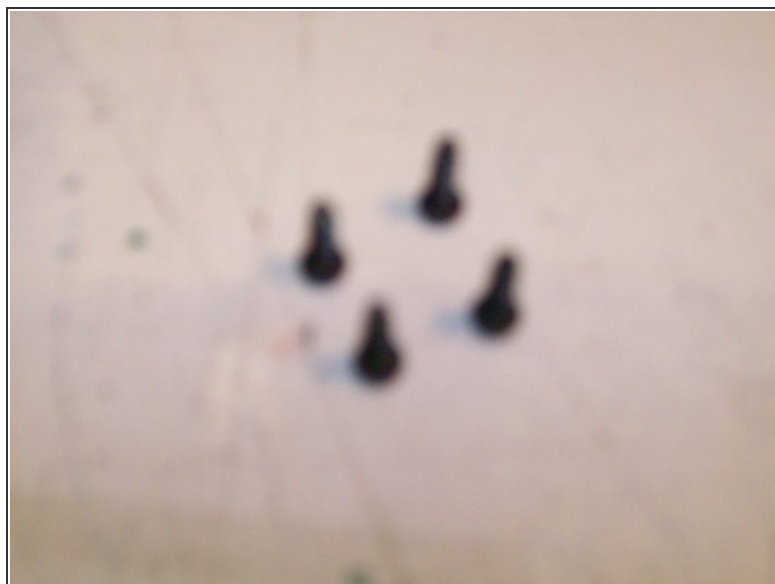
- [iFixit Opening Tools](#) (1)
 - [Spudger](#) (1)
 - [64 Bit Driver Kit](#) (1)
-

Step 1 — Sega Genesis II Teardown



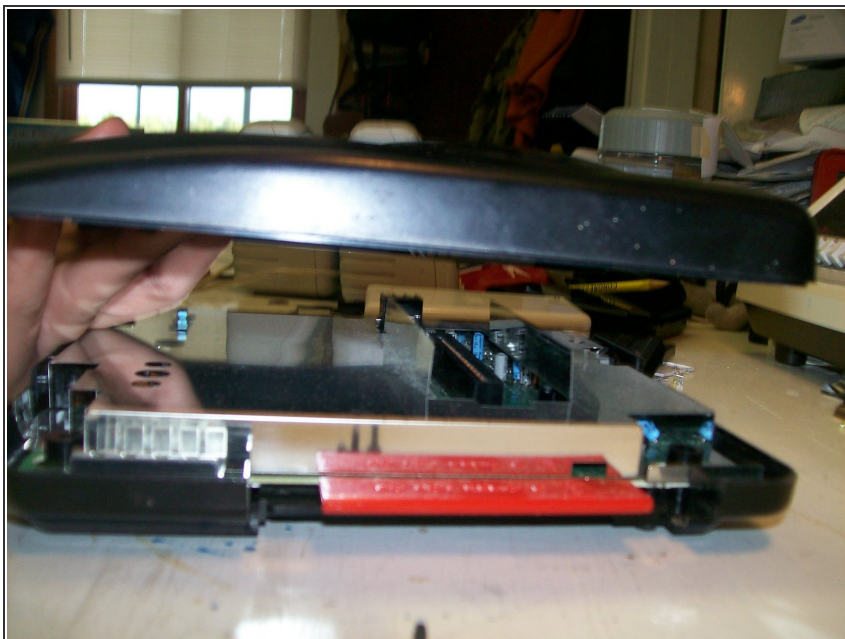
- Let's start by taking the small door found on the bottom right side of your console

Step 2



- Next, remove the four, black 11mm screws from the bottom of your console.

Step 3



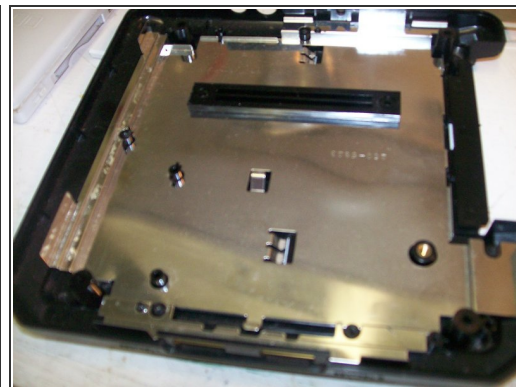
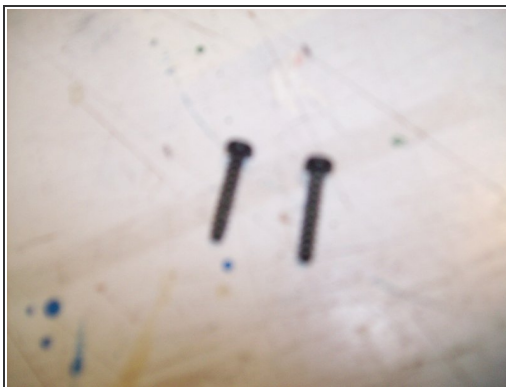
- Carefully lift the top off of the console.
- It should come off relatively easy
- If it doesn't, ensure that all four screws are removed

Step 4



- Remove the six, gold, 8mm screws and the three, black, 8mm screws holding down the EM shield
- After removing the screws, the shield will come off very easily.

Step 5



- Remove the two 17mm black screws on the left and right side of the PIN to release the circuit board from the bottom EM shield.
- After the screws are released, the circuit board can easily be removed from the console.

Step 6



- Well, there you have it!
- One disassembled Sega Genesis. I hope this guide was helpful and informative. Good luck and Happy Gaming!
- This guide brought to you by: Frankie's Video Game Console Repair and iFixit.

