



Sony Ericsson W580i LCD Replacement

Replace a broken LCD on your phone.

Written By: Diego



INTRODUCTION

Use this guide to help you replace the LCD.



TOOLS:

- [iFixit Opening Tools](#) (1)
- [Spudger](#) (1)



PARTS:

- [Sony Ericsson W580i LCD](#) (1)

Step 1 — Front Cover



- Insert the edge of an opening tool between the front cover and the phone.
- Gently pry off the front cover working your way around the edges.

Step 2



- Pull the front cover down and away from the phone.

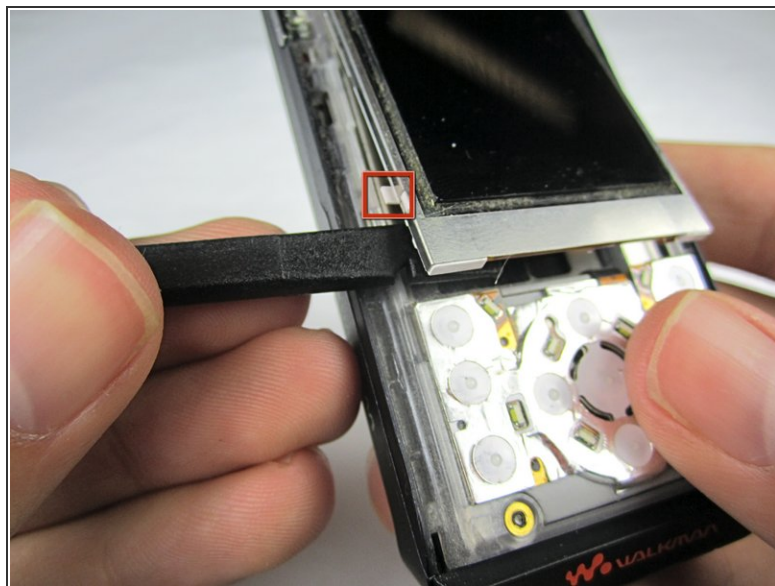
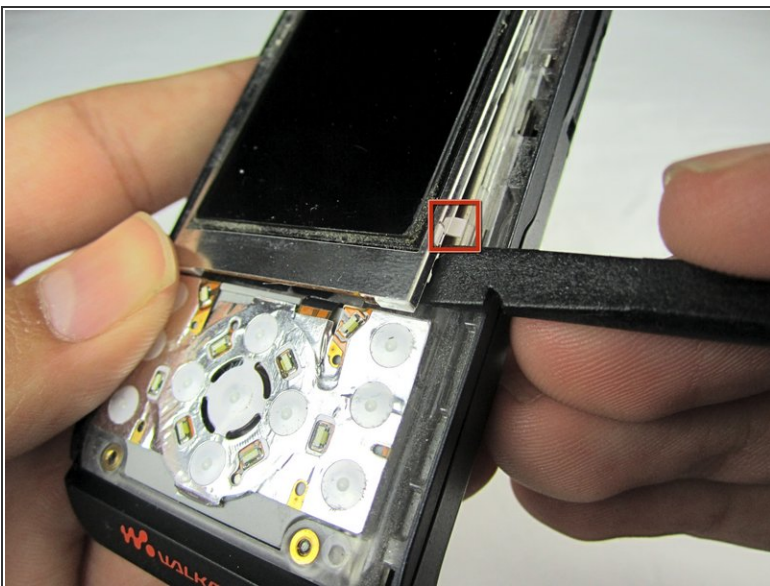
 The front keypads might come off with the front cover. Do not lose these.

Step 3



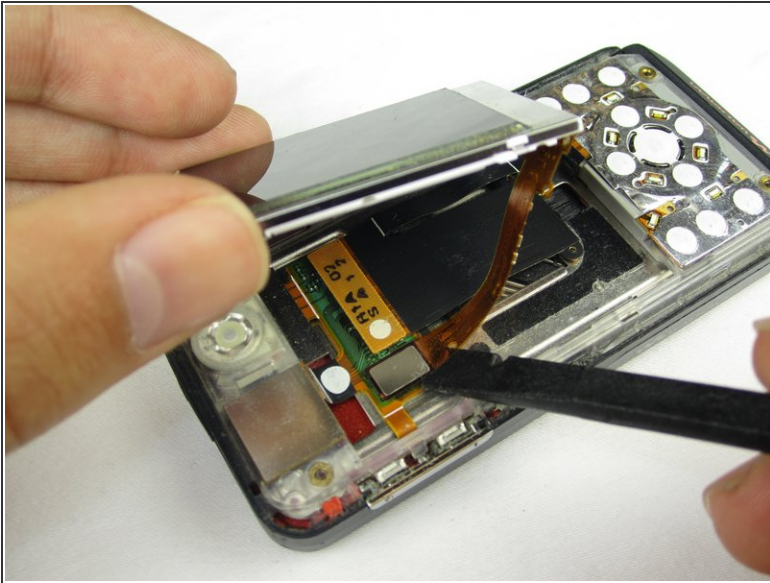
- Gently peel the keypad away from the phone.

Step 4 — LCD



- Insert a spudger between the lower edge of the screen and the phone.
 - Pry the screen up to disconnect the tabs on each side holding the screen in.
- ⚠ Do not remove the screen yet. There is a ribbon connecting the screen to the motherboard.

Step 5



- Use a spudger to remove the ribbon cable from the motherboard.
- Lift the screen away from the phone

To reassemble your device, follow these instructions in reverse order.