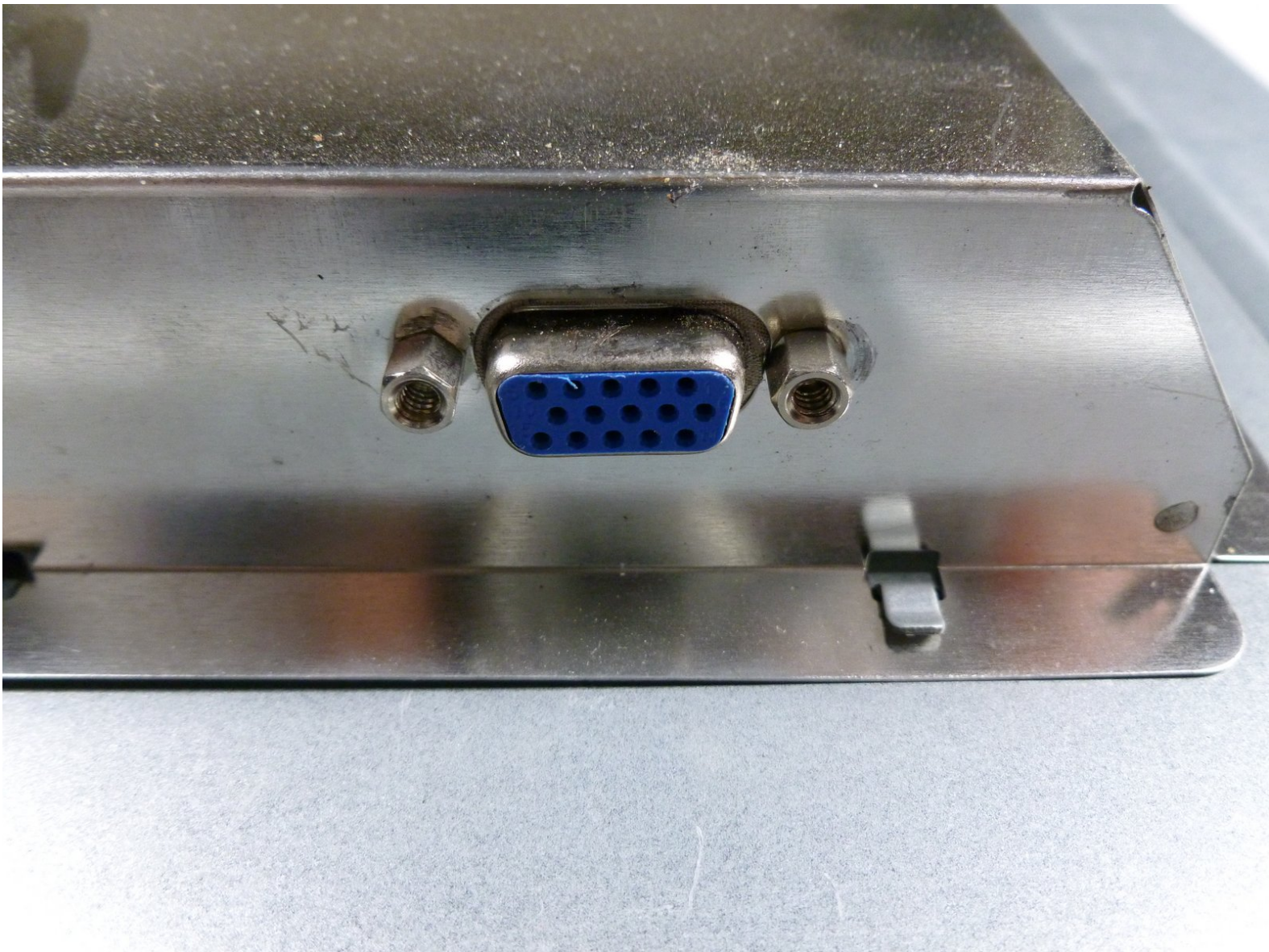




# Acer AL1916 VGA Input Replacement

This guide will show the steps required to remove the back cover of the monitor, take out the malfunctioning VGA input, and install the new VGA input.

Written By: Taylor Atterbury



## INTRODUCTION

The VGA input transfers information from the computer to the monitor, so having one that is working properly is important.



### TOOLS:

- [Large Needle Nose Pliers](#) (1)
- [Phillips #2 Screwdriver](#) (1)
- [Soldering Iron](#) (1)
- [iFixit Opening Tools](#) (1)



### PARTS:

- [VGA Input](#) (1)

## Step 1 — Stand



- i** Lay the monitor on a flat surface so that the back is facing up.

## Step 2



- Grab the hinge cover with both hands on either side of the stand.
- Squeeze inwards with your thumbs and fingers and lift up to remove the hinge cover.



### Step 3



- Remove the four 12.1 mm Phillips #2 screws that hold the stand to the monitor.
- ⚠ Support the monitor while removing the screws to prevent the monitor from falling.
- Lift up to detach the stand.


### Step 4 — Outer Case



- Remove the five 9.5 mm Phillips #2 screws located around the perimeter of the monitor.

## Step 5



- Starting at the corner of the monitor, wedge the small plastic opening tool between the back cover and the display bezel.
  - Tilt the plastic opening tool up to separate the back cover from the display bezel.
  - Continue around the perimeter of the monitor until the display bezel comes off.
-  A reasonable amount of force is necessary to detach the back cover from the display bezel.

## Step 6

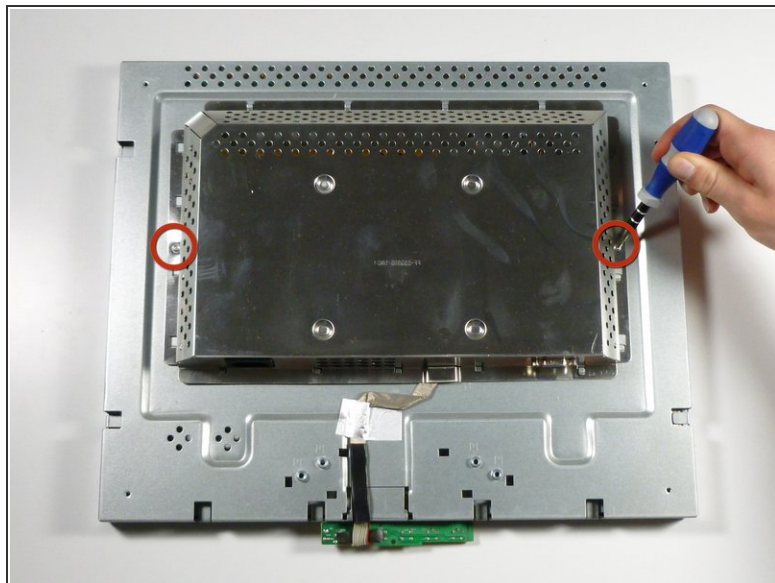


**i** Reposition the monitor so that the back is facing up.

- Grab the corners of the monitor and jiggle them upwards to detach the back cover from the inside of the monitor.
- Lift the back cover up.

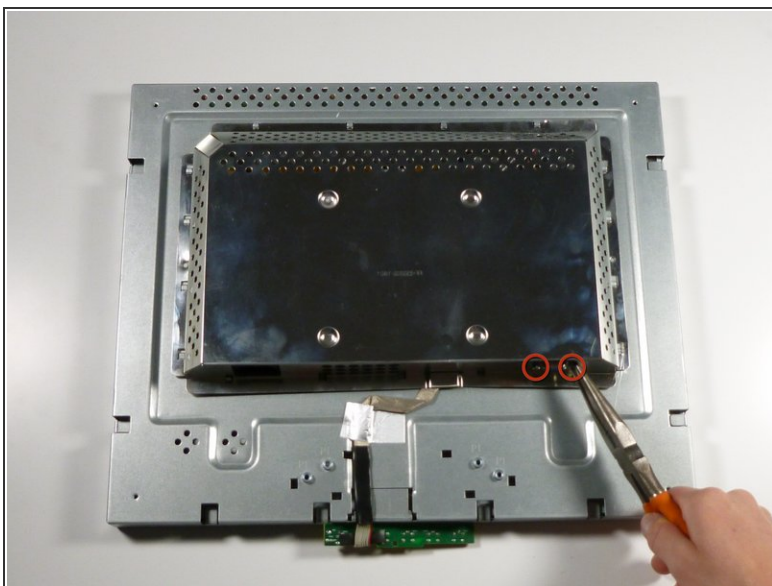


## Step 7 — EMI Shield



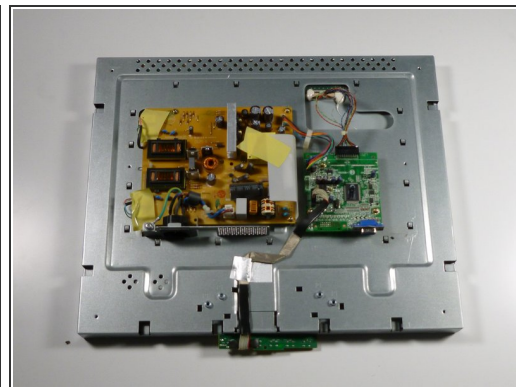
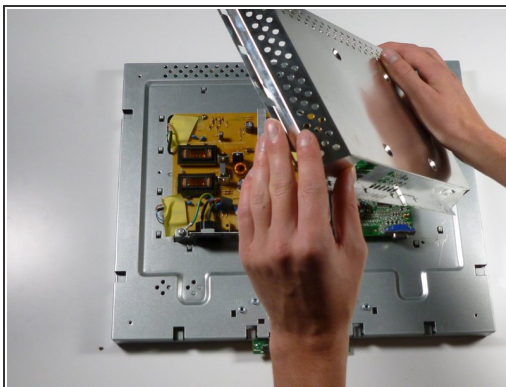
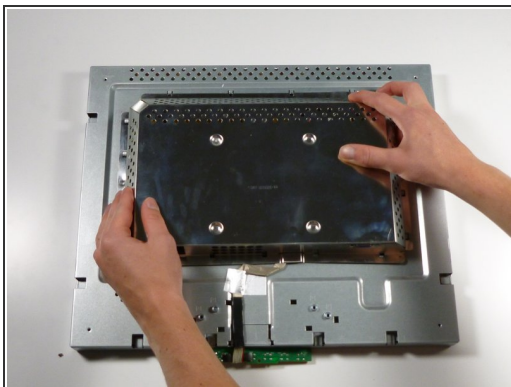
- Remove the two 5.7 mm Phillips #2 screws located on either side of the EMI shield.

## Step 8



- Using a nut driver (or if necessary, needle-nose pliers), remove the two nuts on either side of the VGA input.

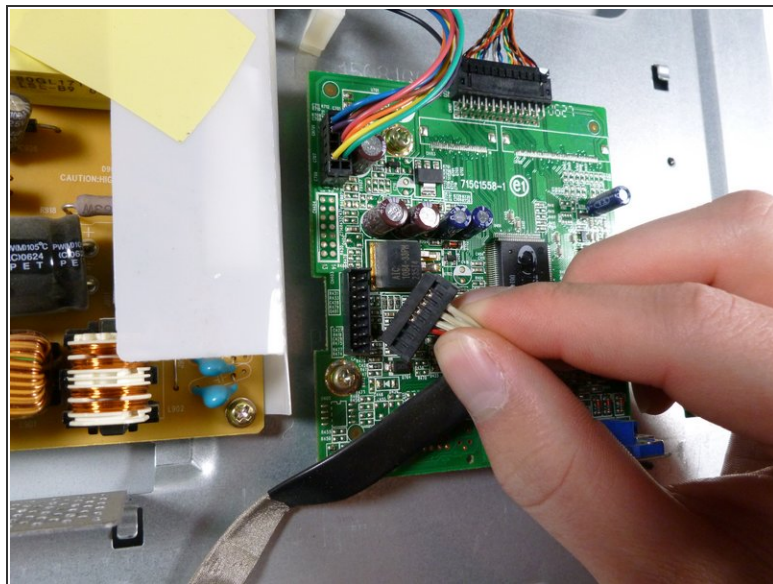
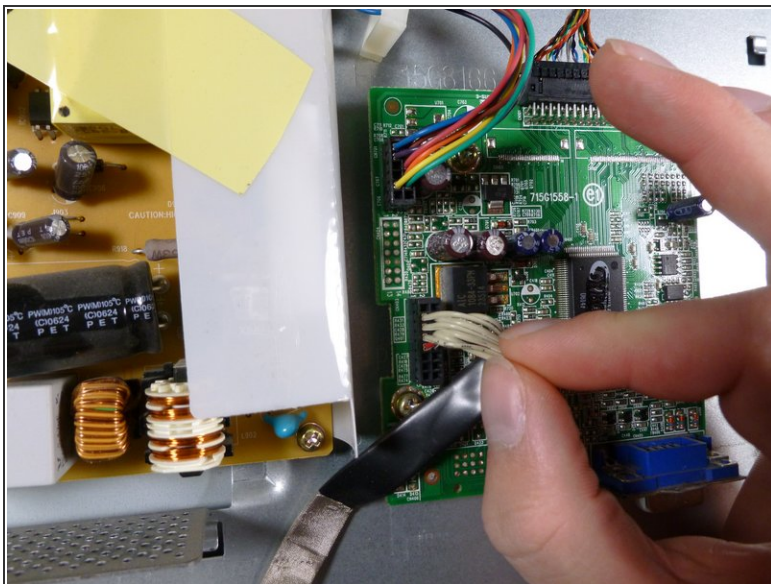
## Step 9



- Grab the metal casing by the sides and slide it down towards the bottom of the monitor.
- Lift up to remove the metal casing.

⚠ Beware, metal casing is sharp!

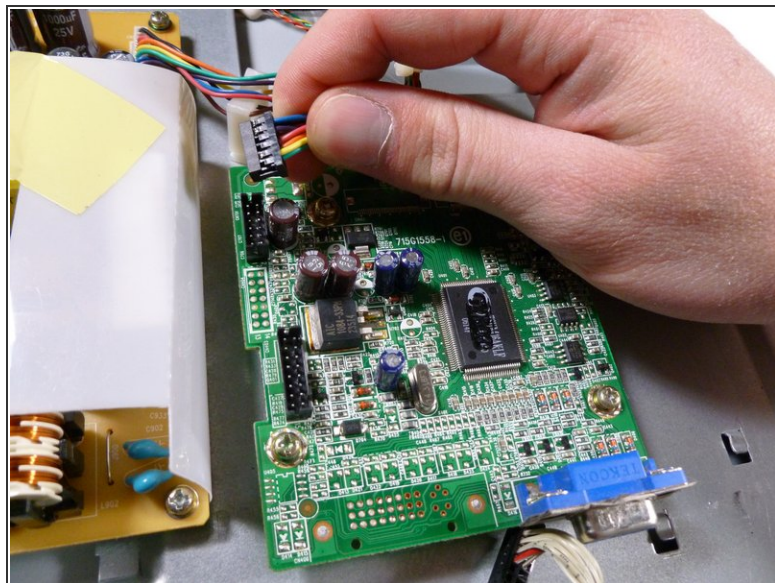
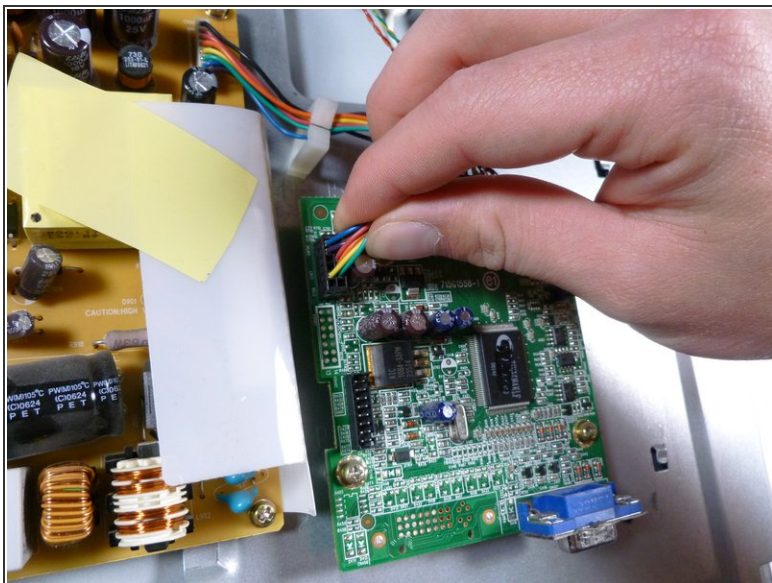
## Step 10 — Motherboard



- Remove the beige control cable to the left of the VGA input by pulling it up.

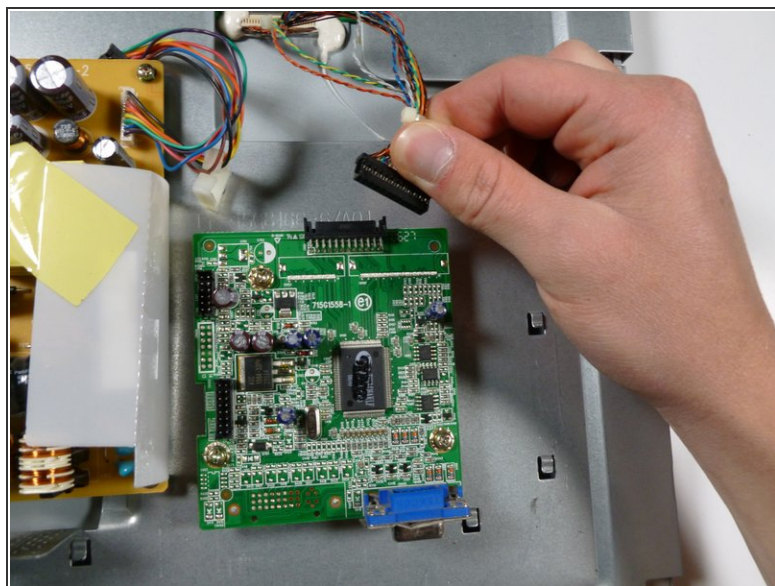
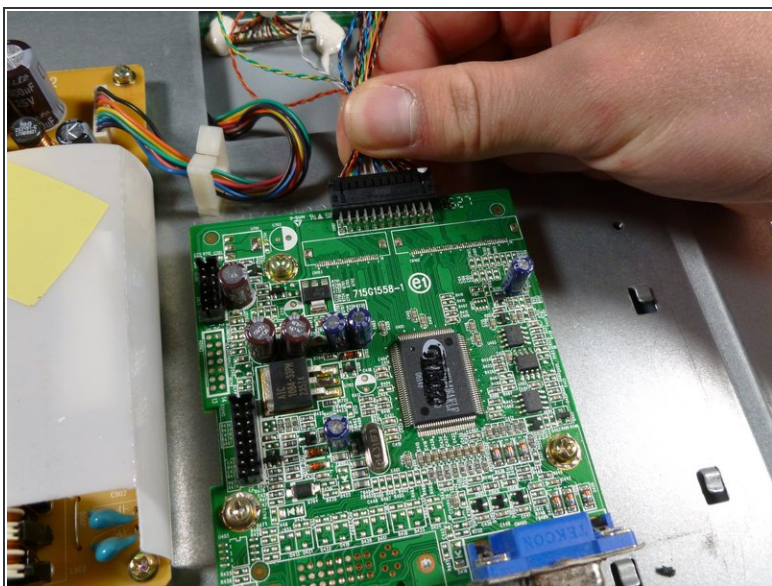


## Step 11



- Remove the rainbow-colored power cable by pulling it straight up.

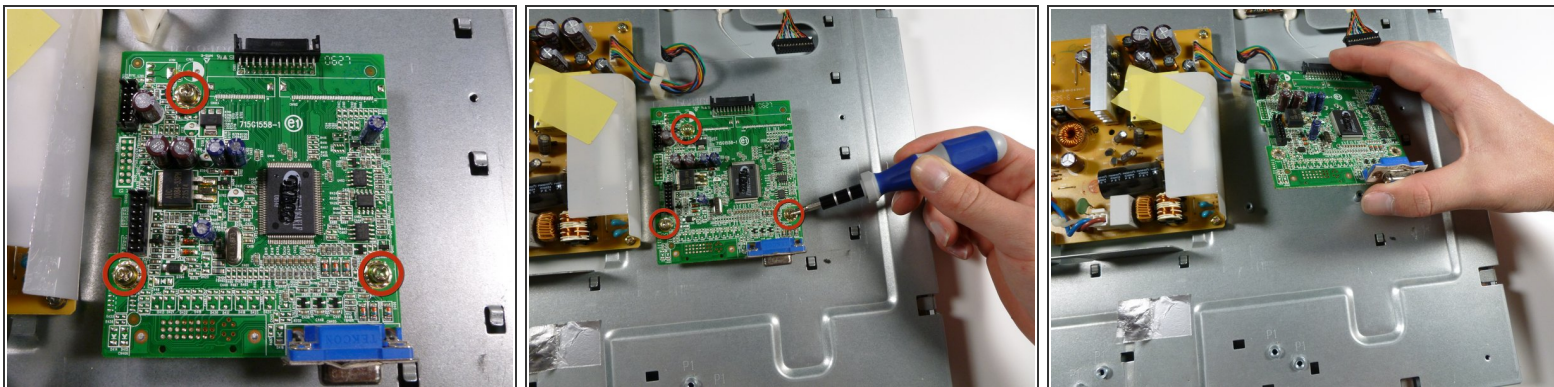
## Step 12



- Remove the display cable located at the top of the motherboard by pulling it out towards the top of the monitor.

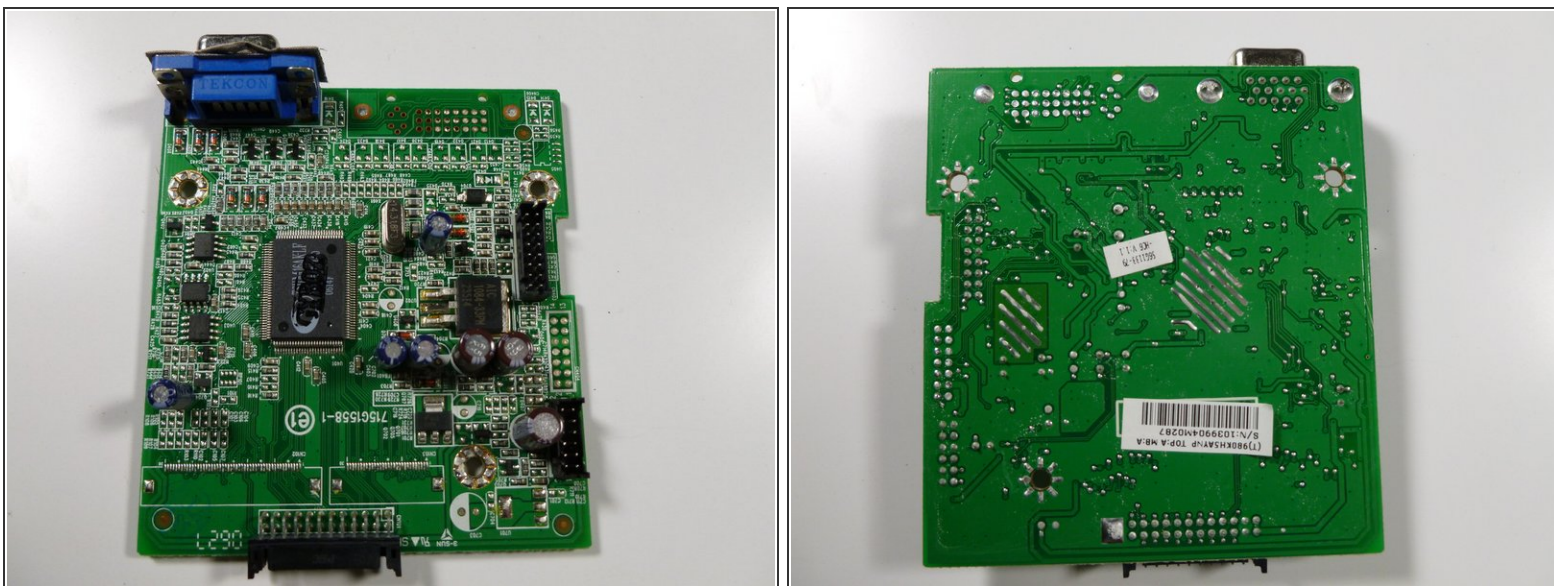



## Step 13



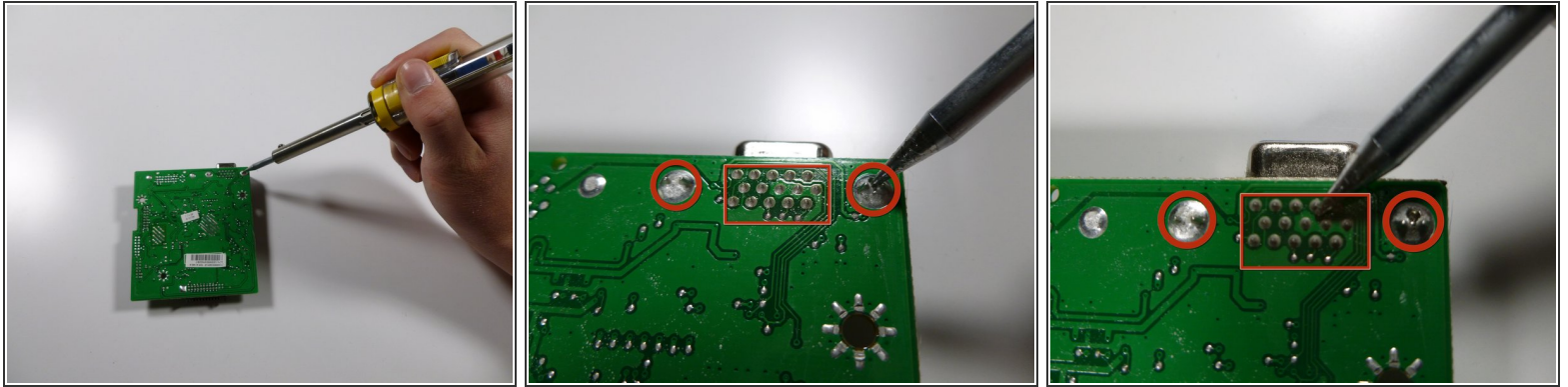
- Remove the three 7.7 mm Phillips #2 screws from the motherboard, and take out the motherboard by lifting it up.

## Step 14 — VGA Input



- Set the circuit board down on its own, removed from the rest of the monitor.
-  Flip the circuit board over so that the VGA input is facing upwards.

## Step 15



- Using the soldering iron, desolder the VGA input at the indicated locations.
- Solder the new VGA input into the circuit board at the same locations.
- [Click here](#) for more information on component-level soldering.

To reassemble your device, follow these instructions in reverse order.