



HP Photosmart c3180 Driver Motor Replacement

In this guide, you will be removing the drive...

Written By: Jim



INTRODUCTION

In this guide, you will be removing the drive motor of an HP Photosmart c3180 Printer, in order to either replace the drive motor itself or to replace the driving cabal, per step 3. If the drive motor is burned out or is beginning to fail, the operation of your printer can be greatly or completely hindered.

The screws in step 1 can be removed using the TR10 Torx Security Screwdriver.

The driving cabal appears to be made out of some kind of synthetic elastic material. Even though it can stretch a little, be careful not to stretch it too much and snap it.

There are no major safety hazards to worry about while performing this repair.

TOOLS:

Spudger (1)

TR10 Torx Security Screwdriver (1)

Step 1 — Top Panel of HP Photosmart c3180 printer



- ☒ Before disassembling your printer, be sure that the printer has been unplugged to avoid any risk of injury.
- Rotate the printer 90 degrees counter clockwise so that the side panel next to control panel is facing you.
- Remove the two T10 12mm Torx screws from the left side panel.

Step 2



- Firmly pull the the back of the side panel until it separates from the body of the printer.
- Rotate the side panel upwards while pulling it towards yourself to remove the panel.

Step 3



- Rotate the printer 90 degrees clockwise.
- Grasp the paper tray and rotate it down.
- Insert your fingers into the slot in the printer door and pull to rotate the gate down.

Step 4



- Rotate the printer 90 degrees clockwise.
- Remove the two T10 12 mm Torx screws.
- Grasp both sides of the side panel and pull it forward to remove the panel.

Step 5



- Rotate the printer 90 degrees counter clockwise.
- Lift the scanner lid to expose the scanner glass.

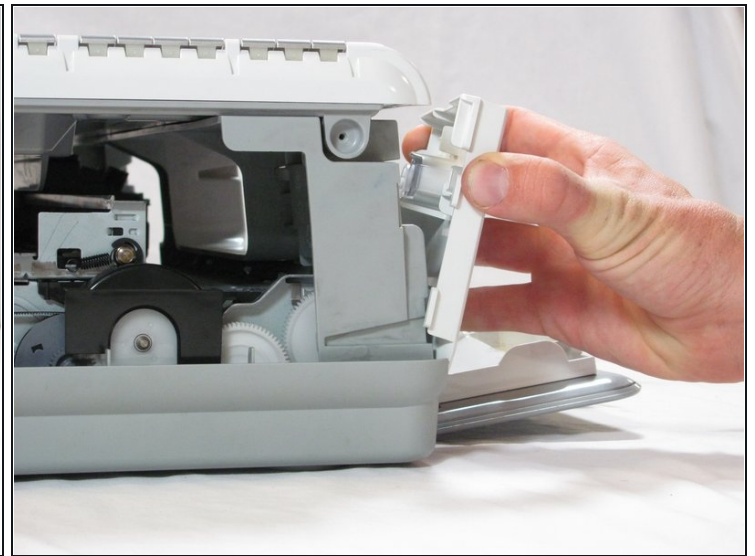
Step 6



- Remove the two T10 12 mm Torx screws.

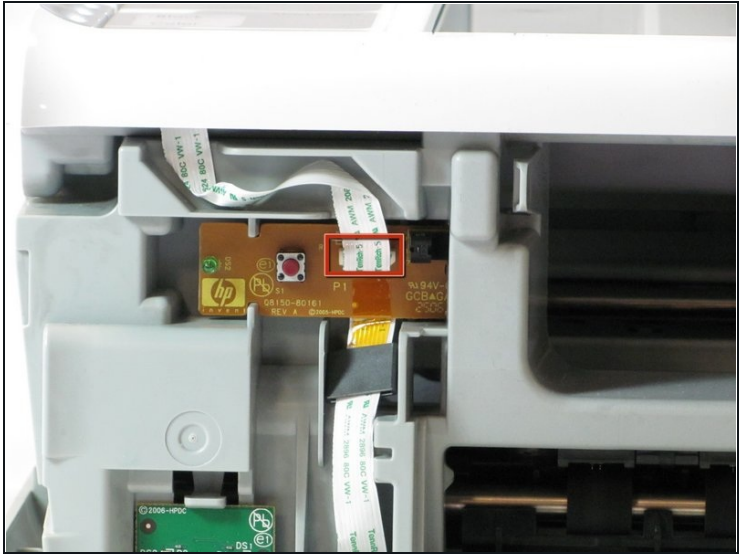
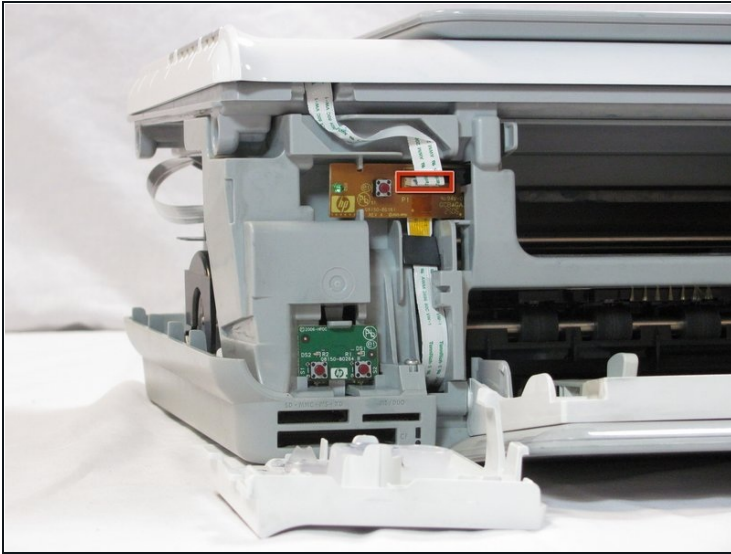
⚠ Do not attempt to lift the top panel off the printer yet because it is still connected to the printer body by a cable.

Step 7



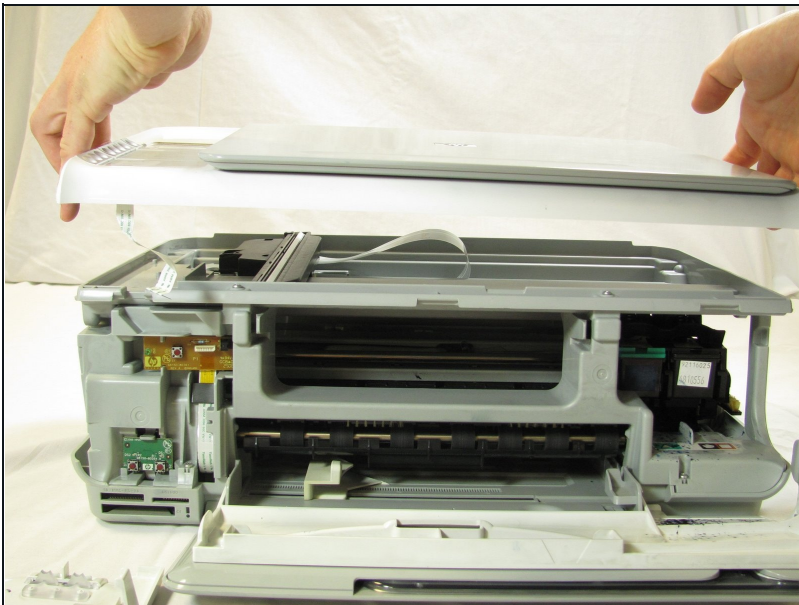
- Rotate the printer 90 degrees counter clockwise.
- Inside the printer is a small white tab. Press it inward with a spudger until a pop is heard.
- Remove the front panel by grasping its front and pulling away from the printer.

Step 8



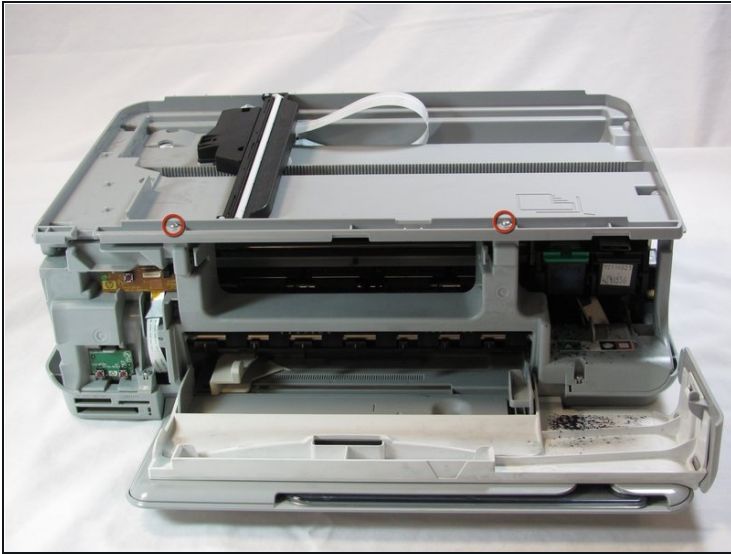
- Rotate the printer 90 degrees clockwise.
- Remove the cable connecting the top panel of the printer to the power button assembly.

Step 9



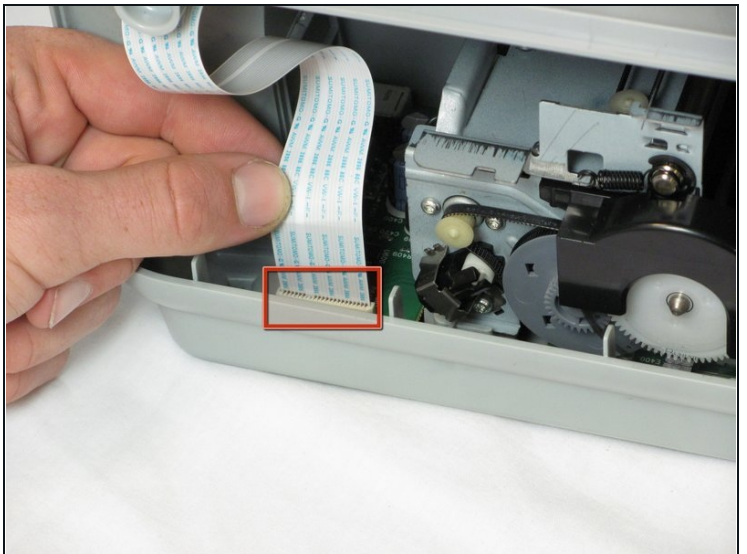
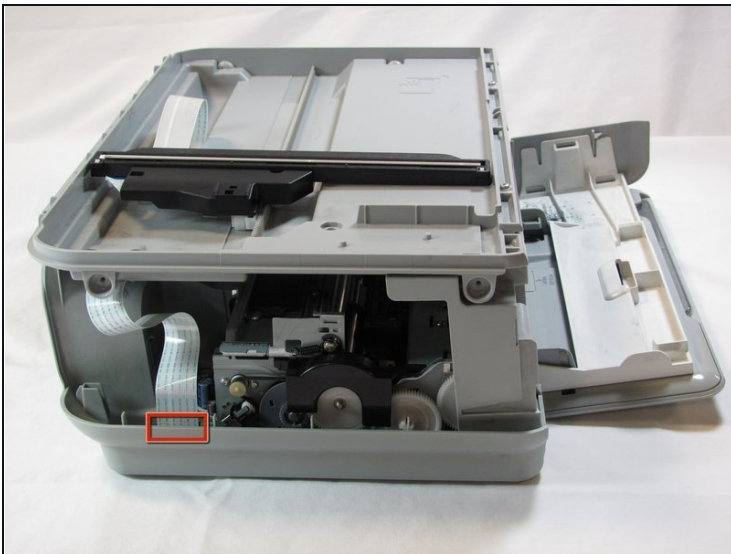
- Carefully lift the top panel of the printer away from the printer body.

Step 10 — Ink Cartridge Track



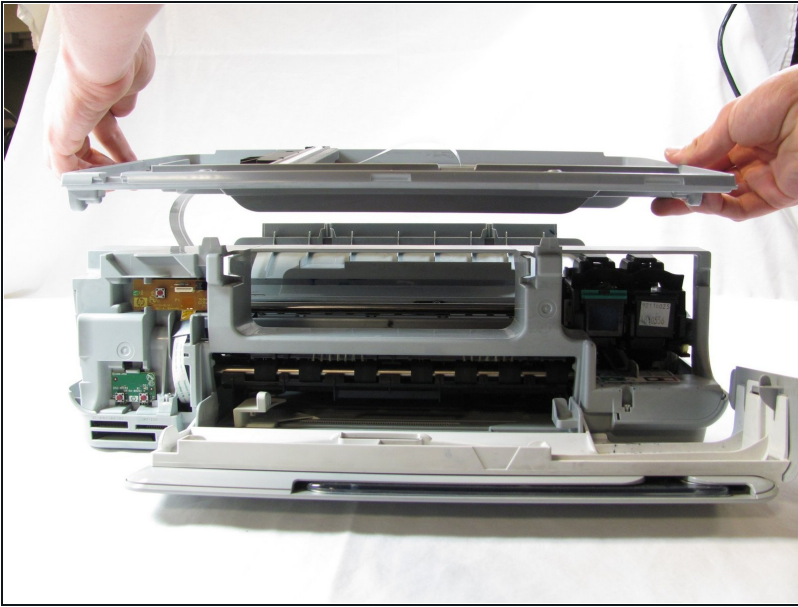
- Set aside the top panel of the printer.
- Remove the two T10 12 mm Torx screws from the top front of the printer

Step 11



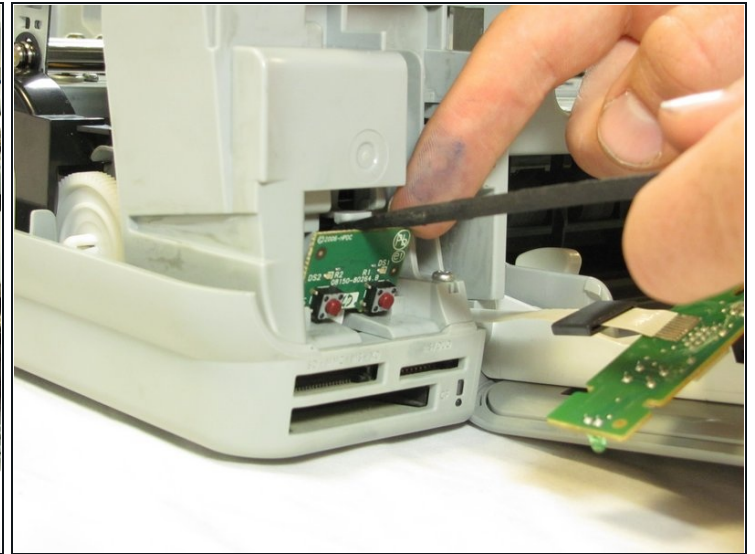
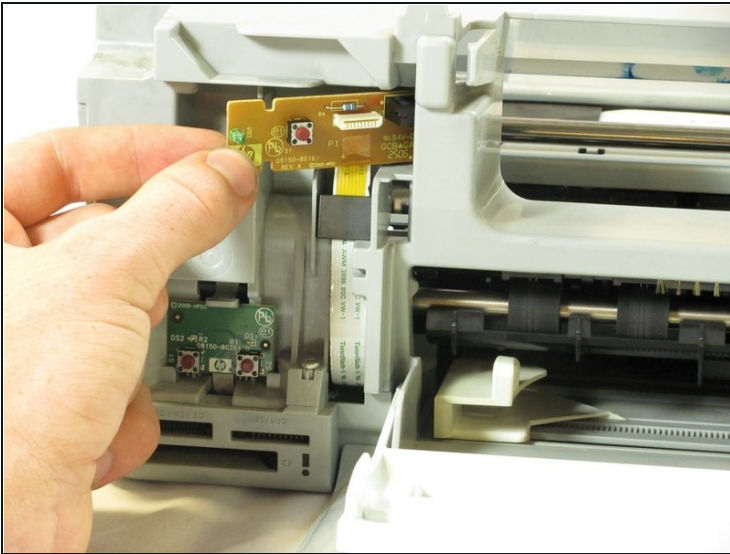
- Rotate the Printer 90 degrees counter clockwise.
 - Remove the scanner cable from the main circuit board.
- ⓘ Grasp the bottom of the cable and pull straight up. Do not wiggle it from side to side or twist it as this can damage the connection.

Step 12



- Rotate the printer 90 degrees clockwise.
- Using both hands, lift the scanner tray from the body of the printer.

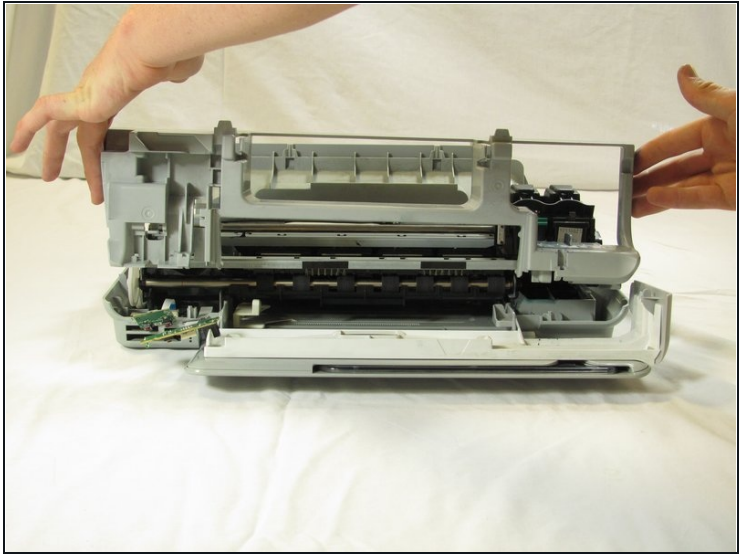
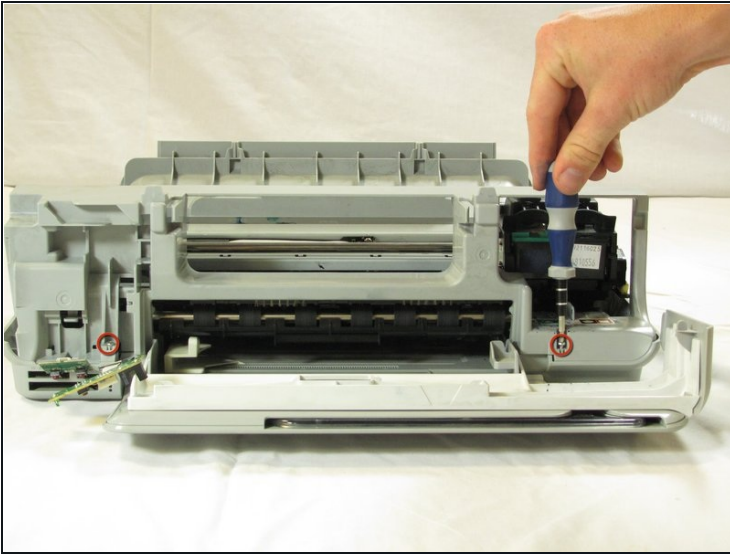
Step 13



- Remove the power button circuit board from the support frame by pinching the left side, and pulling forward and to the left simultaneously.
- Push up on the tab holding the secondary control circuit board with the spudger and pull it forward to remove it.

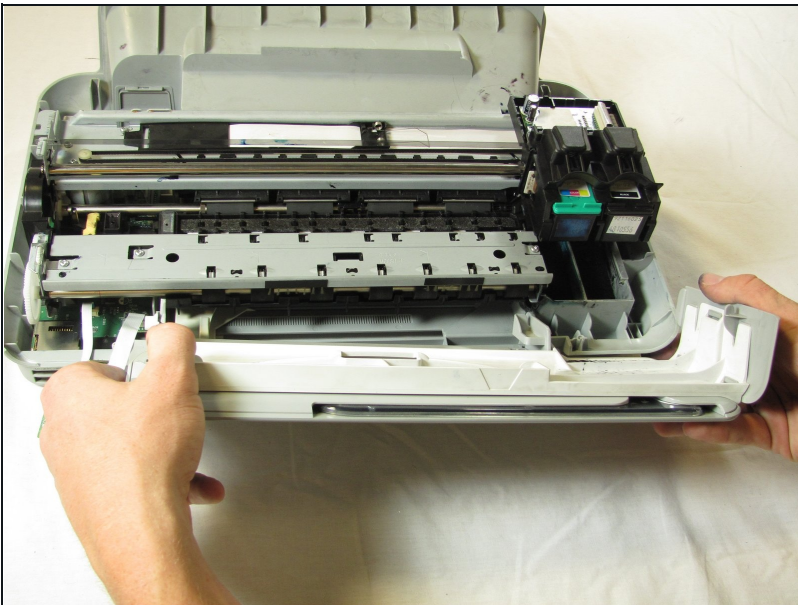
⚠ Be careful not to pull too hard on the cable connecting the power button control circuit board and the secondary control circuit board to the main circuit board

Step 14



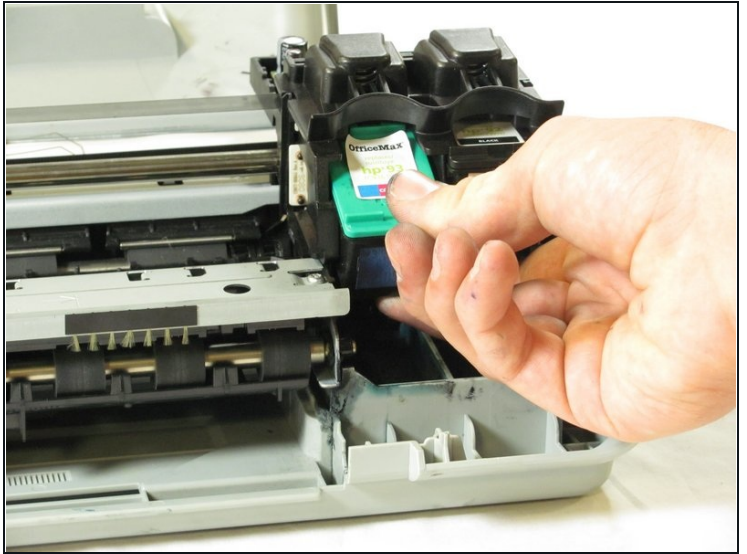
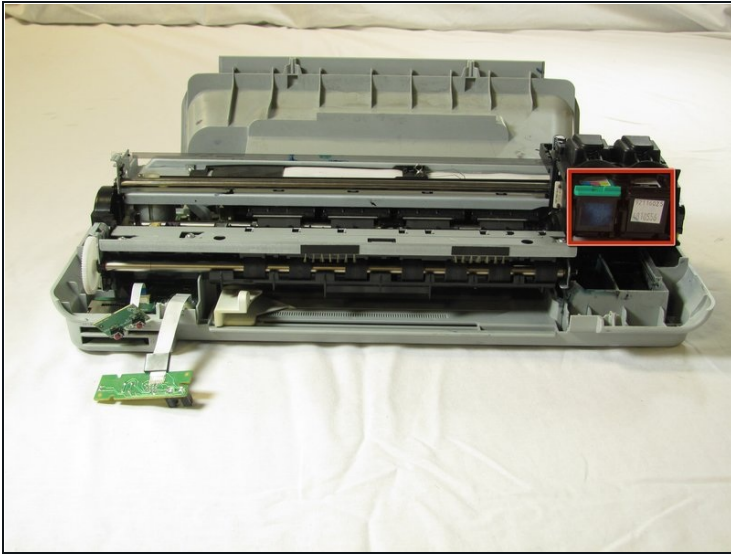
- Remove the two T10 12 mm Torx screws.
- Lift the support frame off of the printer body with both hands.

Step 15



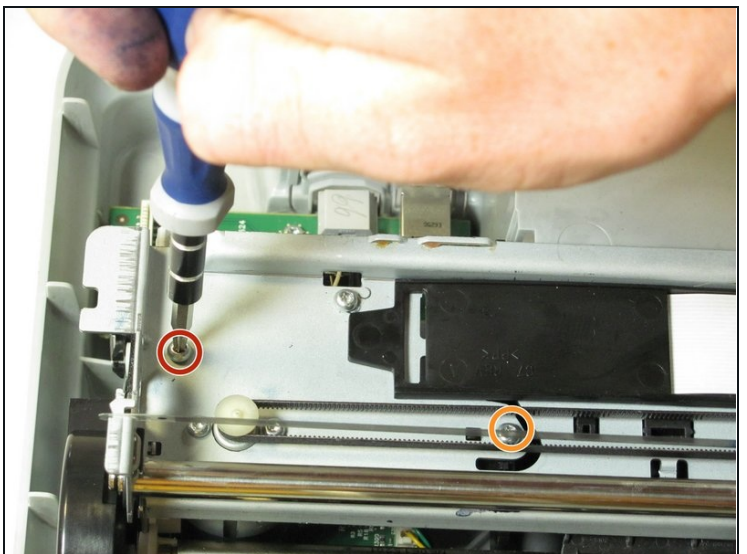
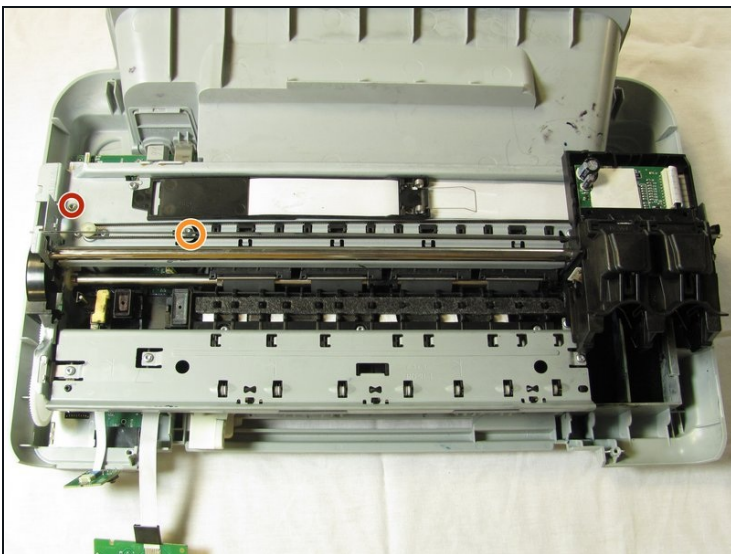
- Remove the printer door and paper tray by putting them in the closed position and not laying flat then rotating them upwards lift the left side up.

Step 16



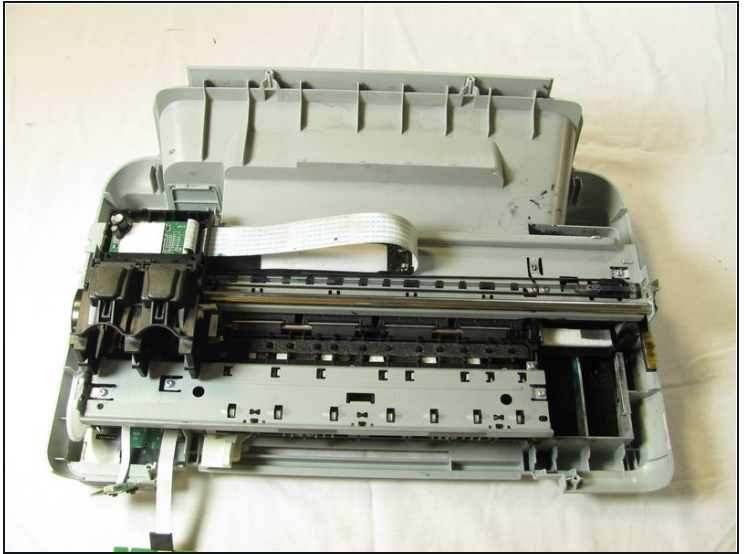
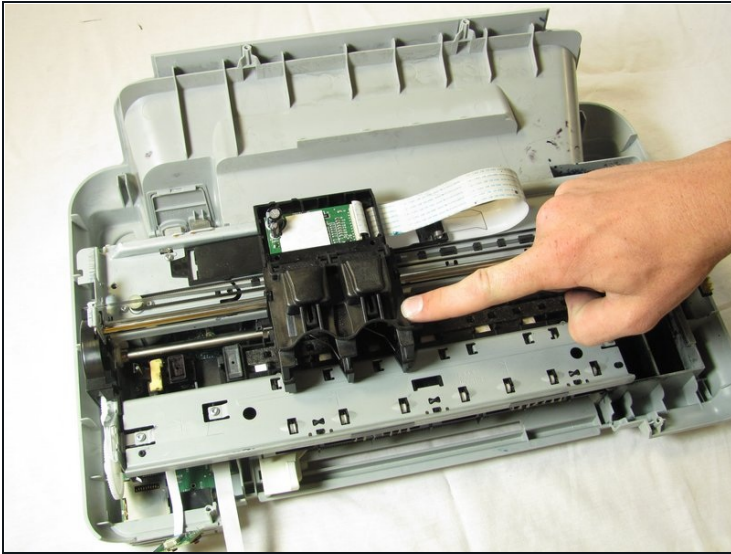
- Remove both of the ink cartridges by grabbing the front of the ink cartridge and pulling down.
- ⓘ Make sure that the printer carriage is pushed all the way to the right.

Step 17



- Remove the T10 6 mm Torx screw on the left side of the track assembly.
- Remove the T10 12 mm Torx screw on the right side of the track assembly.

Step 18



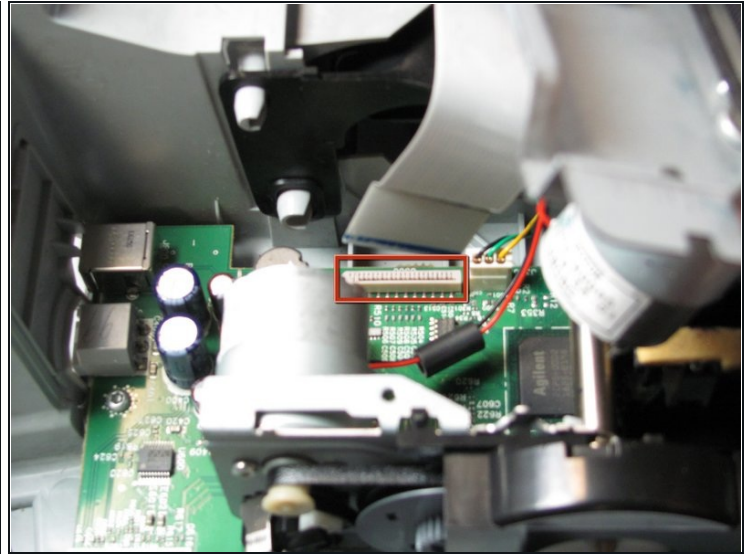
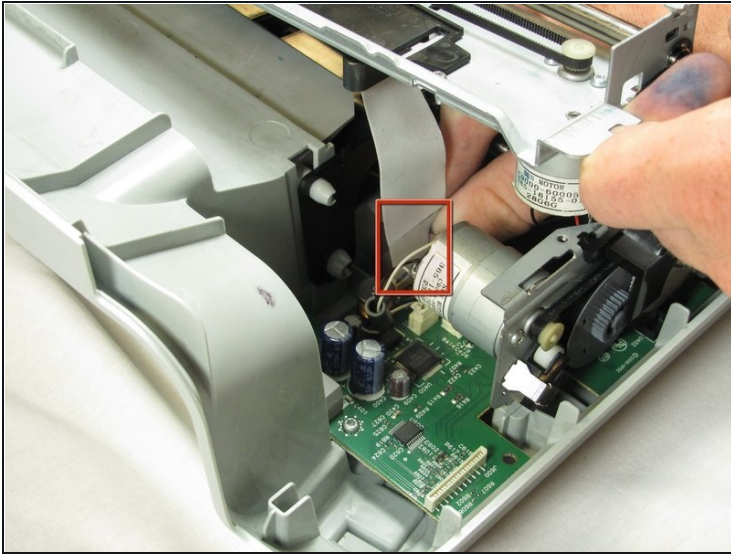
- Gently push the ink cartridge carriage to the left side of the printer.

Step 19



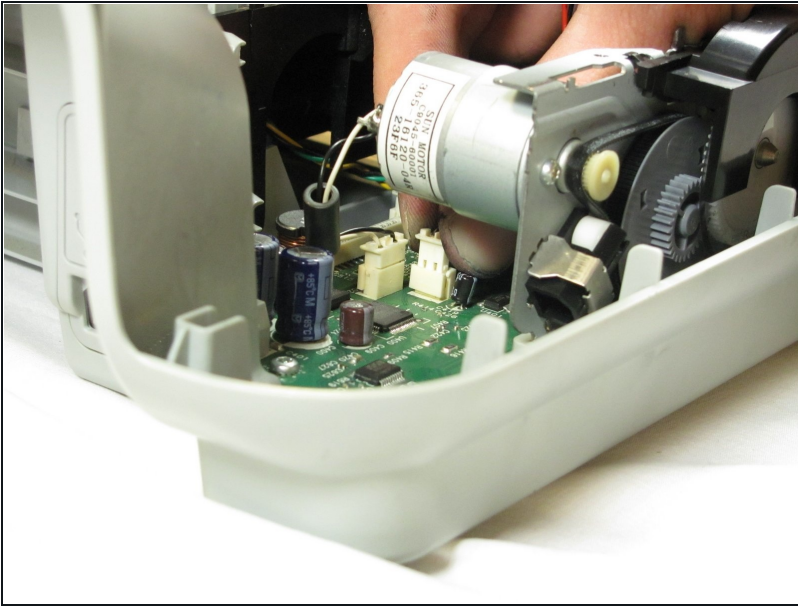
- Remove the two T10 12 mm Torx screws.
- Remove the two T10 6 mm Torx screws.

Step 20



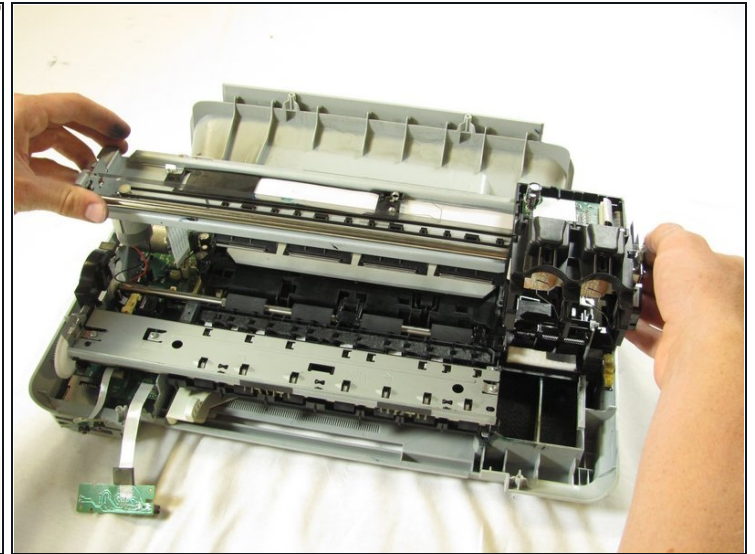
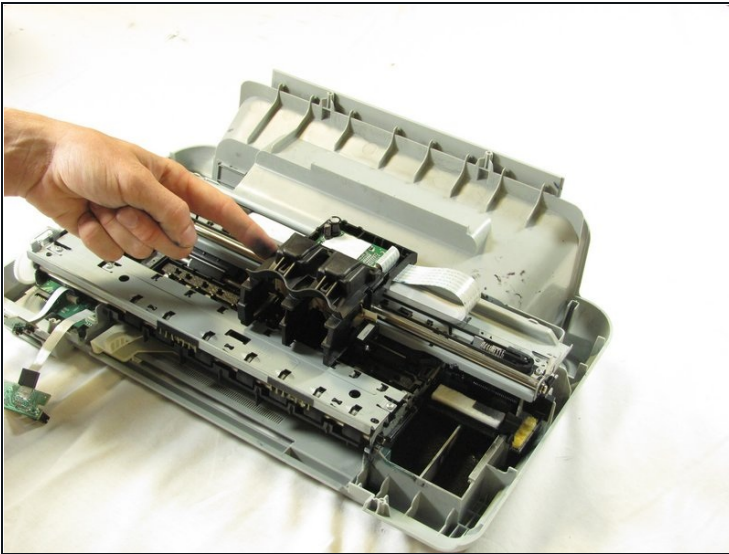
- Rotate the printer 90 degrees counter clockwise.
 - Remove the cable connecting the ink cartridge carriage to the main circuit board.
- ⚠ Pull straight up to free the cable from the main circuit board. Do not twist or wiggle the cable as doing so can damage it.**
- ⓘ** You may need to lift the carriage up with one hand in order to reach the cable with the free hand as shown.

Step 21



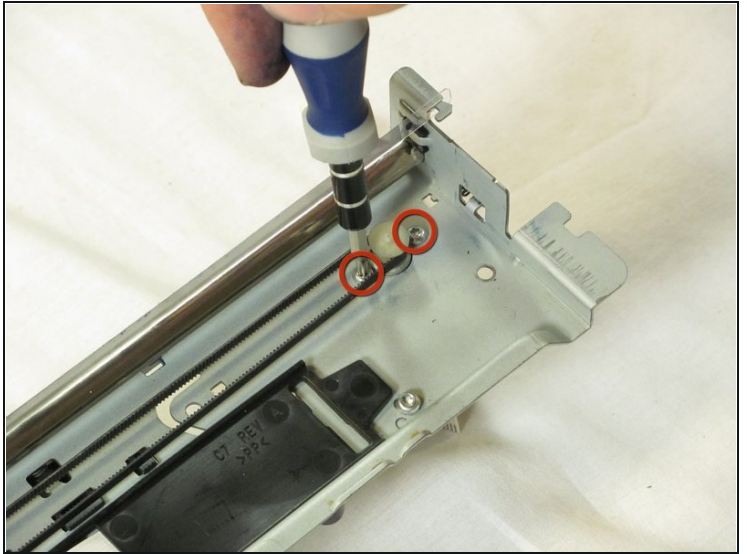
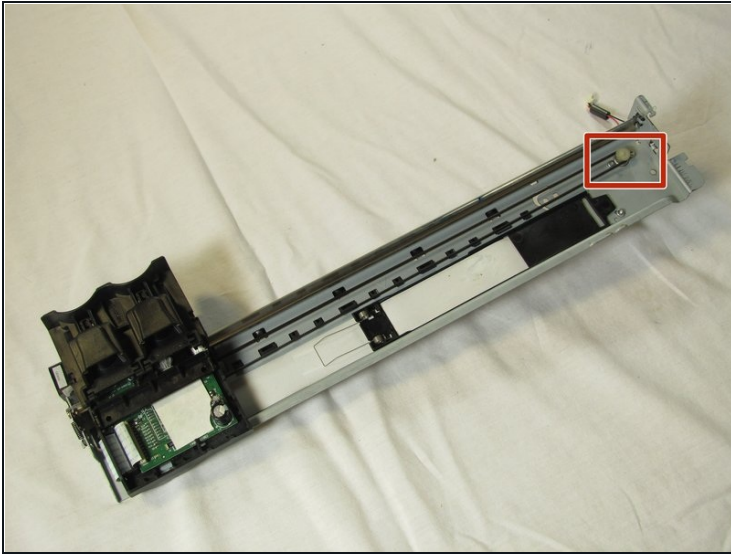
- Carefully remove the connector holding the drive motor wires to the main circuit board.

Step 22



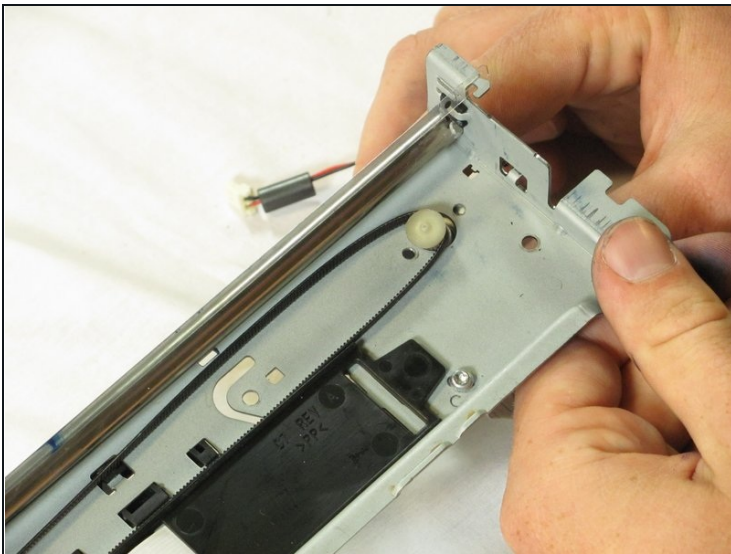
- Slide the ink cartridge carriage all the way to the right side of the printer.
- Using both hands, carefully lift the ink cartridge track off of the main body of the printer.

Step 23 — Driver Motor



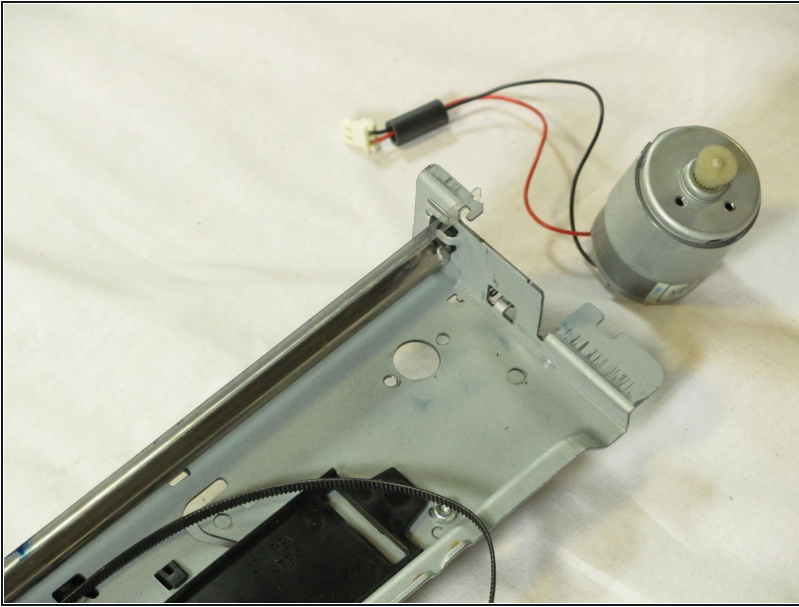
- Set aside the printer body.
- Remove the two motor retainment T10 4 mm Torx screws, per images 1-2.

Step 24



- Grasp the bottom of the drive motor (Hidden behind the housing in images 1-2) and rock it away from the center of the cable loop to release the tension in the cable.
- Using your fingers, unhook the cable from drive motor.

Step 25



- Remove the printer drive motor by gently pulling it downward.

To reassemble your device, follow these instructions in reverse order.