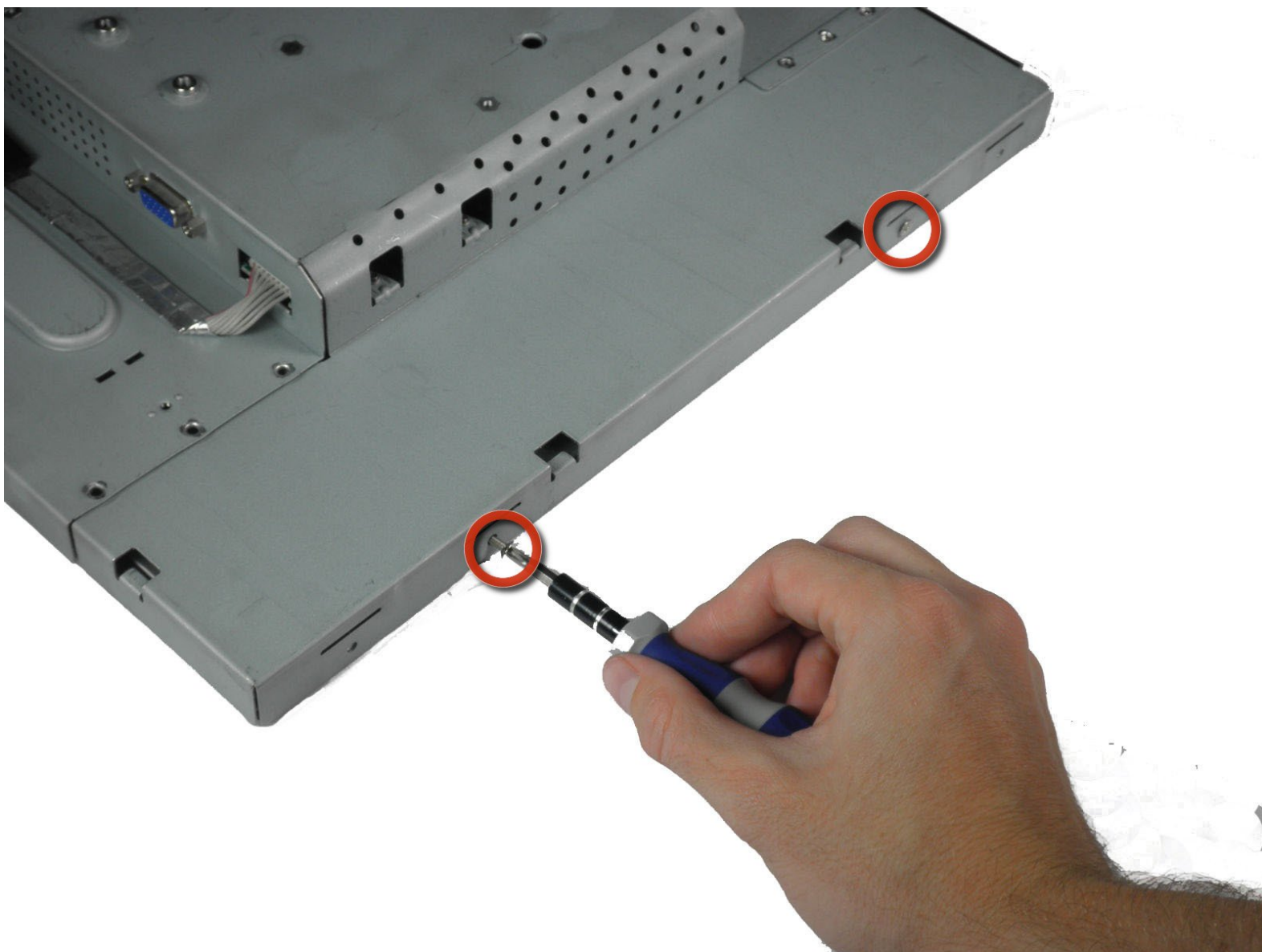




# Dell E193FPc Inverter Board Replacement

Use this guide if you are having problems with...

Written By: Mackenzie Keane



# INTRODUCTION

Use this guide if you are having problems with the brightness of the display.



## TOOLS:

- [5mm Nut Driver](#) (1)
  - [Phillips #2 Screwdriver](#) (1)
  - [iFixit Opening Tool](#) (1)
-

## Step 1 — Stand



- Lay the monitor screen-down so the back screws are exposed.
- Remove the four 11.9 mm Phillips #2 screws securing the stand to the back of the monitor.

## Step 2



- Gently lift and pull away the stand at a slight angle away from the monitor.

## Step 3 — Display Bezel



- Locate the two holes on the bottom of the monitor.
- Insert a plastic opening tool or spudger into the holes and gently pry the plastic apart along the groove.
- ⓘ This task is much easier if two people pry simultaneously at each hole.
- Continue prying along the entire edge of the monitor.

## Step 4



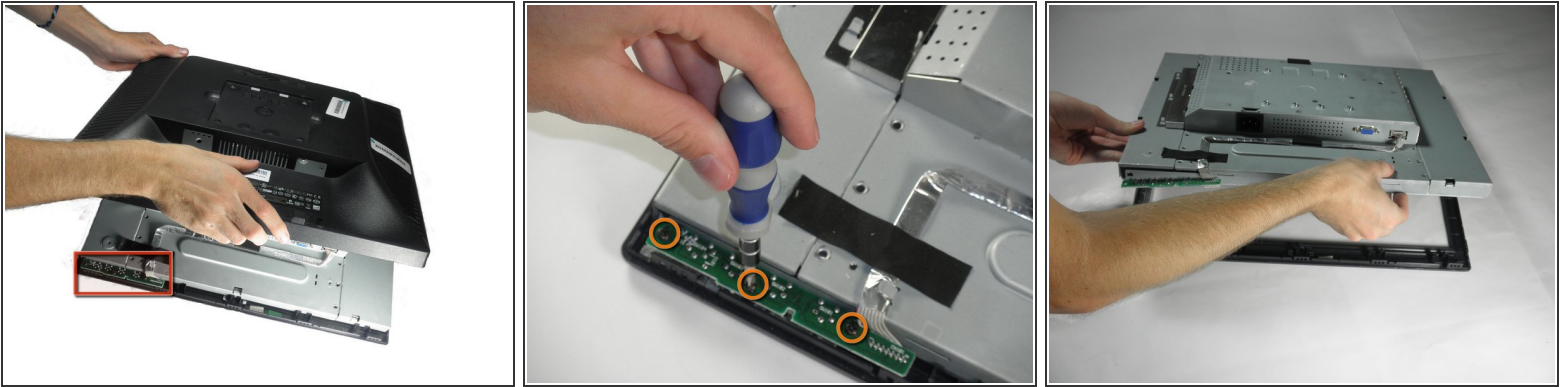
- When finished prying, the plastic will partially fall away from the rest of the monitor.

**⚠ Do not try to fully remove the front frame yet. The frame is still attached to the buttons.**

- While holding the frames together, carefully flip the monitor over so it faces screen down.
- Gently lift and remove the rear case from the monitor.

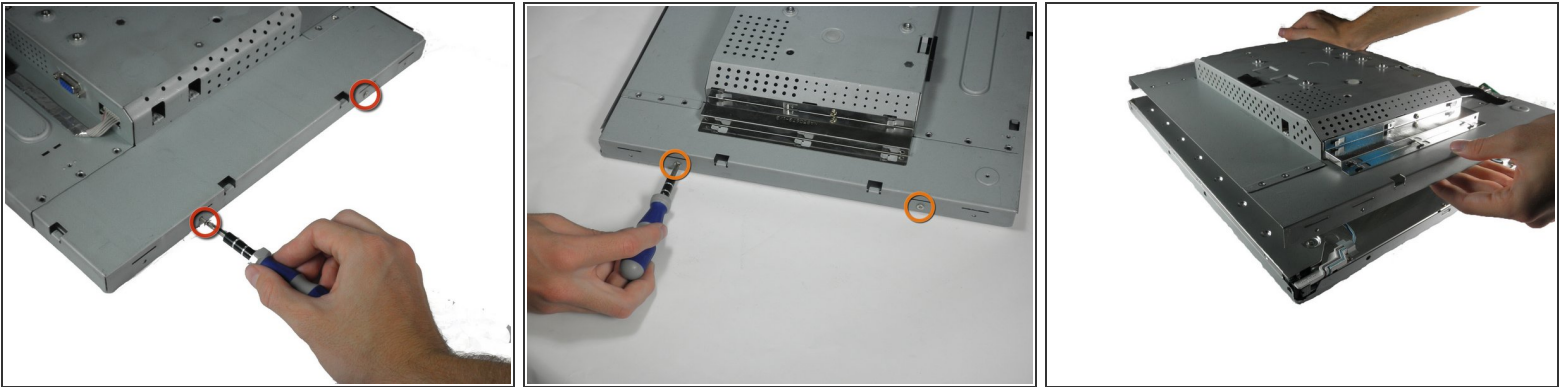


## Step 5



- Locate the green interface button board.
- Remove the three 9.71 mm Phillips #2 screws holding the interface button board to the display bezel.
- Lift the monitor interior away from the front cover.

## Step 6 — Inverter Board



- With the monitor facing down, remove the two 5.81 mm Phillips #2 screws on the right side of the metal casing.
- With the monitor still facing down, remove the two 5.81 mm Phillips #2 screws on the left side of the casing.

**⚠ Do not attempt to pull apart the casing. There are still wires holding the front and back together.**

## Step 7



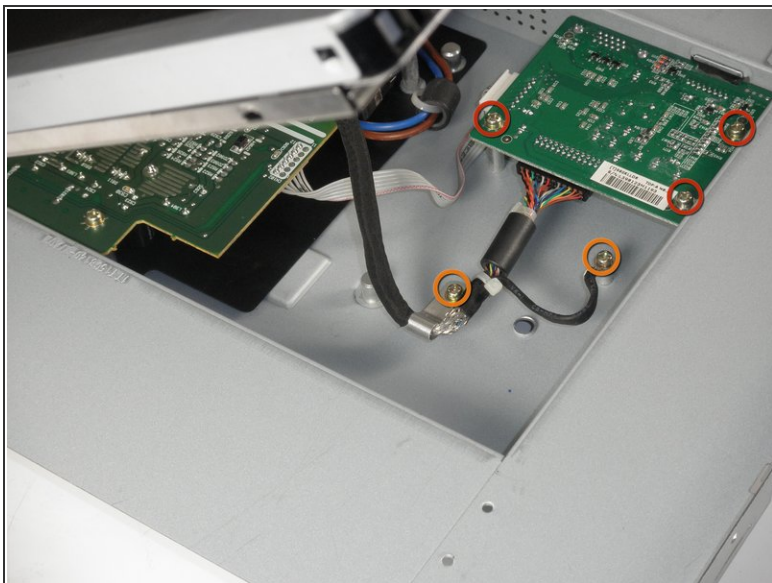
- Using a 5 mm nut driver, unscrew the VGA port's mounting screws from the metal casing.

## Step 8



- With the monitor facing down, gently lift the back case away from the rest of the monitor to expose the inverter board and mother board.
- ★ Recall that the casing is still held together by several wires. Do not attempt to fully remove the back casing.

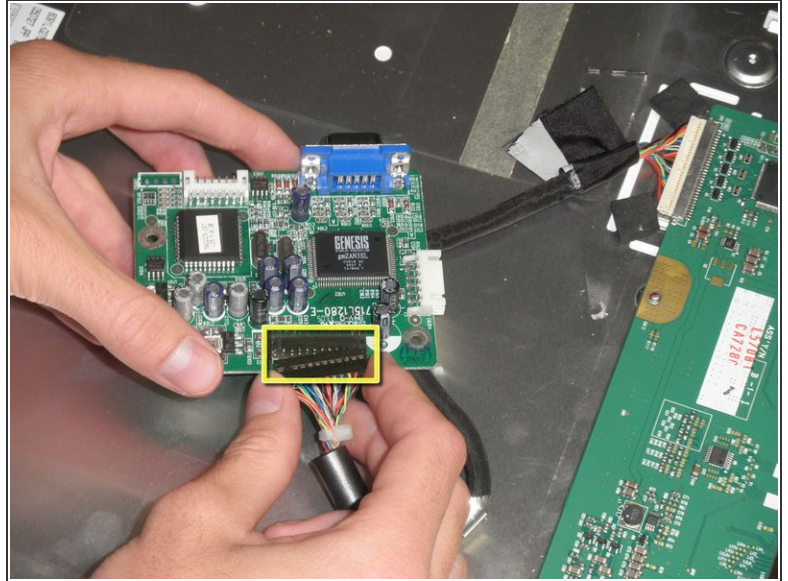
## Step 9



- The inverter board is the smaller board in the corner.
- Remove the three 7.69 mm Phillips #2 screws from the inverter board.
- Remove the two 7.69 mm Phillips #2 grounding screws from the wire with the black connector.
- ⓘ Gently pull the inverter board away from the case. Note that the board is still connected to several components by wires.



## Step 10



- There is a wire connecting the motherboard to the inverter board. Squeeze both sides of the connector and pull to remove it from the socket.
- There is another wire connecting the button board to the inverter board. Remove the second white wire connector.
- A third wire connects the inverter board to the screen circuit board. Remove the black wire connector.
- The inverter board can now be fully removed.

To reassemble your device, follow these instructions in reverse order.