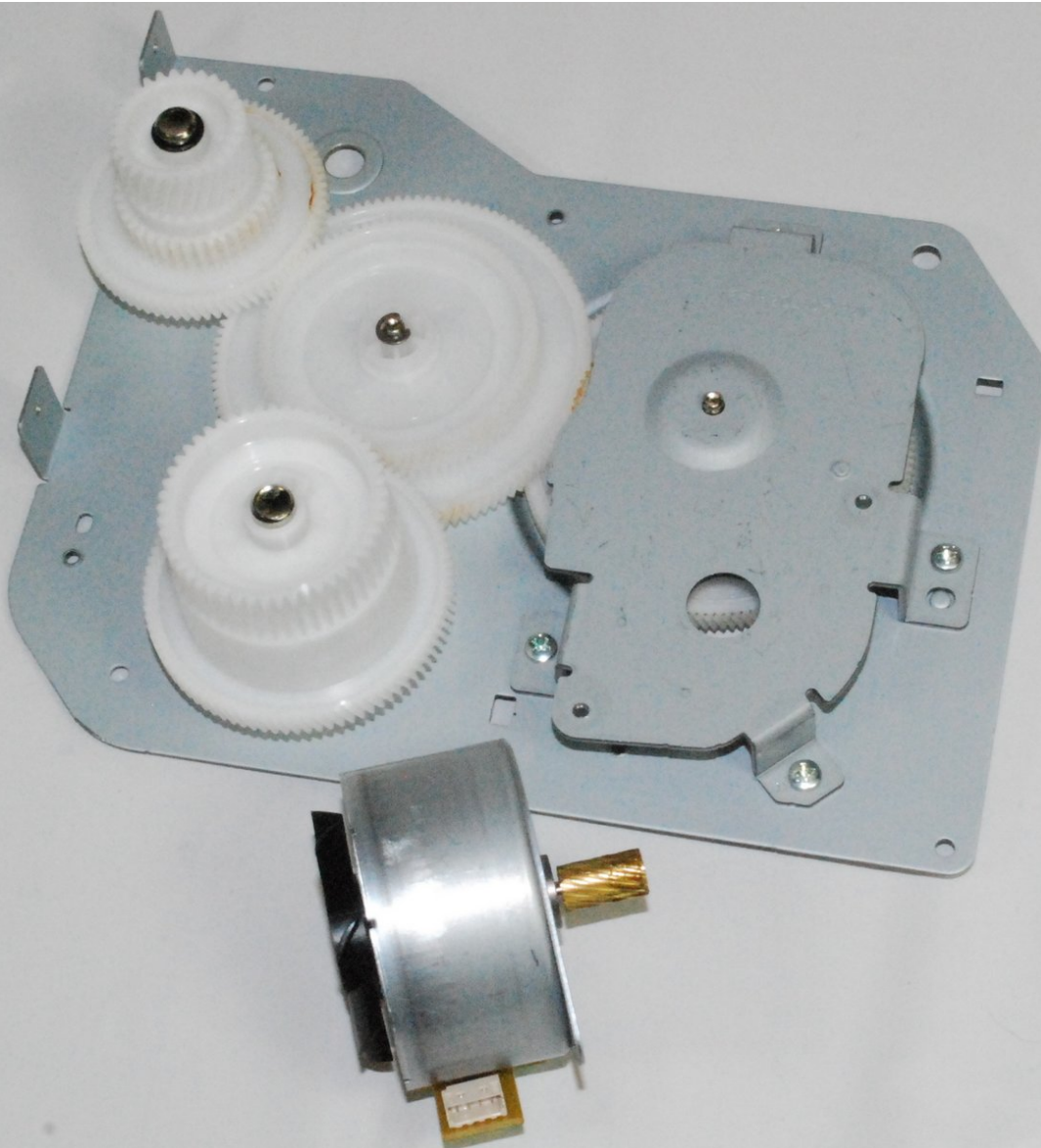




Samsung ML2510 Motor Replacement

This guide will help you to access and replace the motor for the Samsung ML2510 printer.

Written By: bbaustin



INTRODUCTION

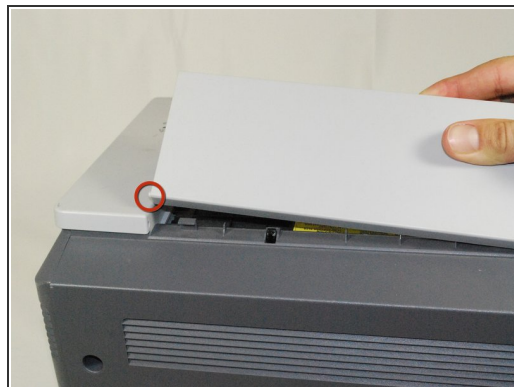
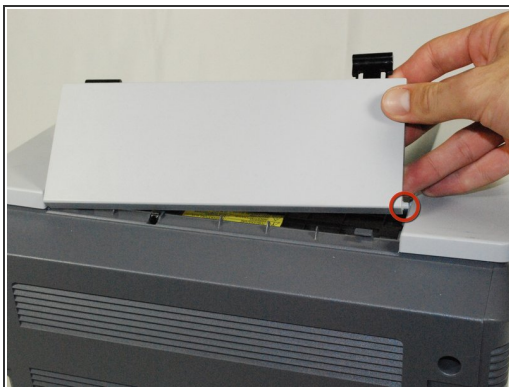
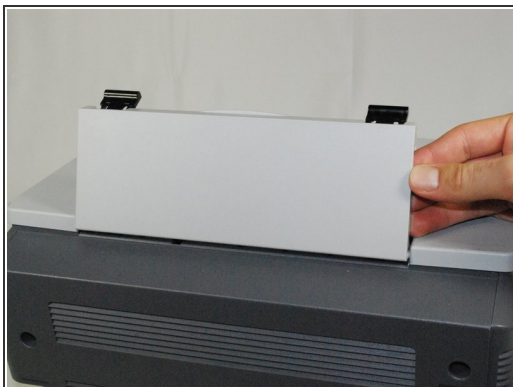
You will be required to disassemble much of the printer and its casing. You will need to refer to the [Removing Samsung ML2510 Back Panel](#) repair guide.



TOOLS:

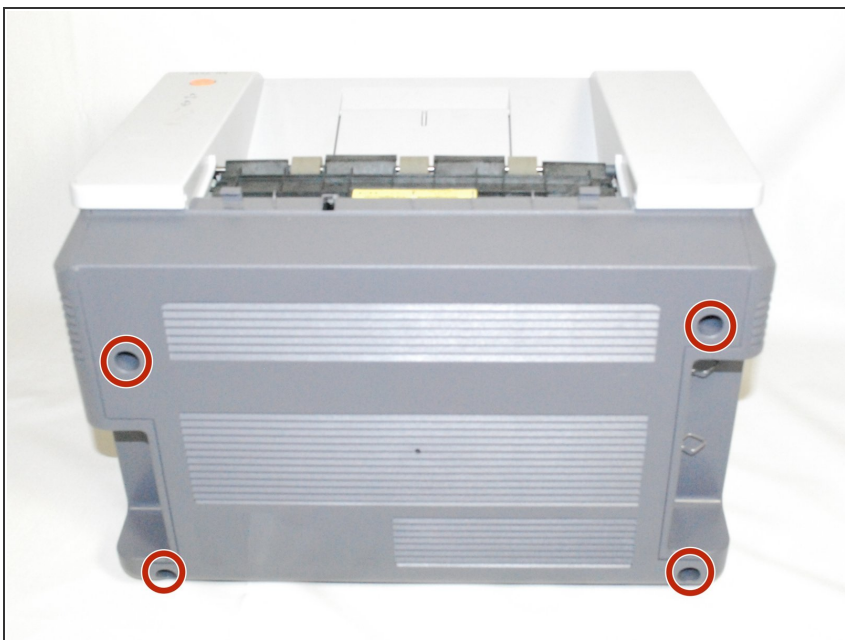
- [Phillips #2 Screwdriver](#) (1)
 - [iFixit Opening Tools](#) (1)
-

Step 1 — Removing Samsung ML2510 Back Panel



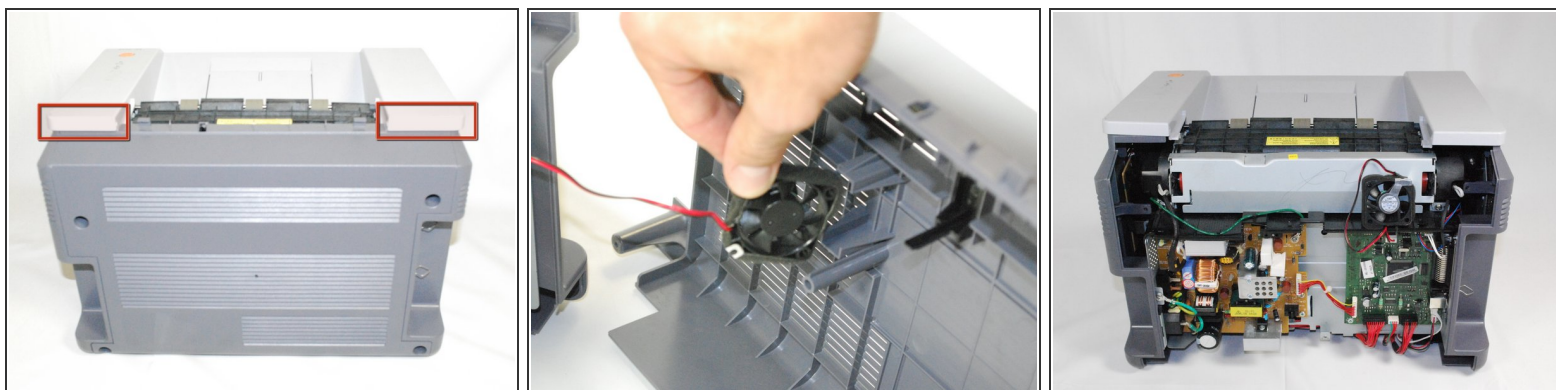
- Remove the top hinged panel by taking out the pins at the bottom of this panel.

Step 2



- Using a Phillips #2 screwdriver, remove the four screws on the back of the printer.

Step 3



- Gently lift the top panel while simultaneously pulling off the back panel.

⚠ Before pulling out the back panel entirely, make sure to remove the rear cooling fan from its slot.

Step 4 — Motor



- Remove the front panel by gently moving the holes on the panel, one at a time, from the pegs attached to the main body of the printer.

Step 5



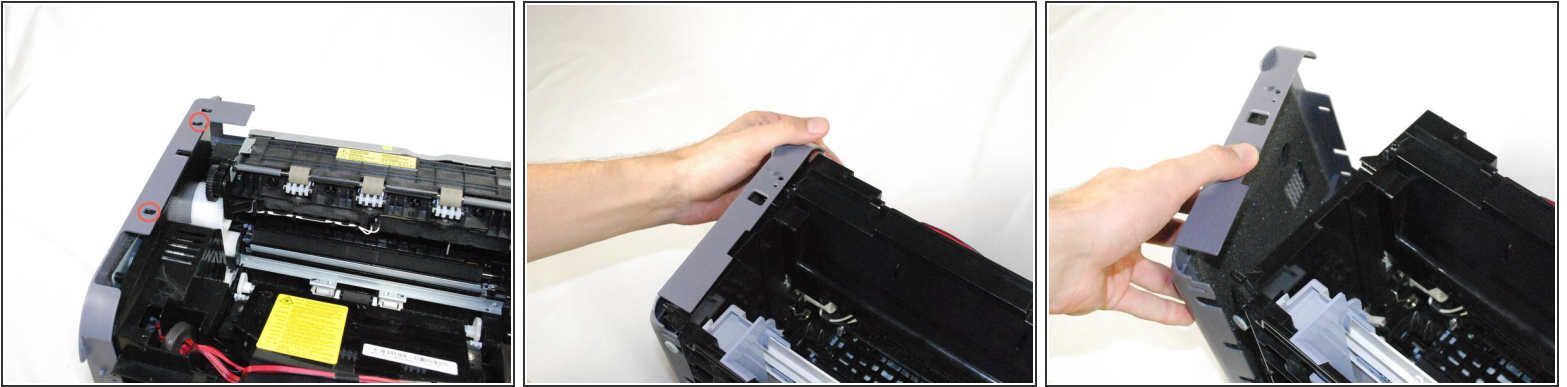
- Use a Phillips #2 screwdriver to remove the two, 1", Phillips, PH#2 screws on the front face of the printer.

Step 6



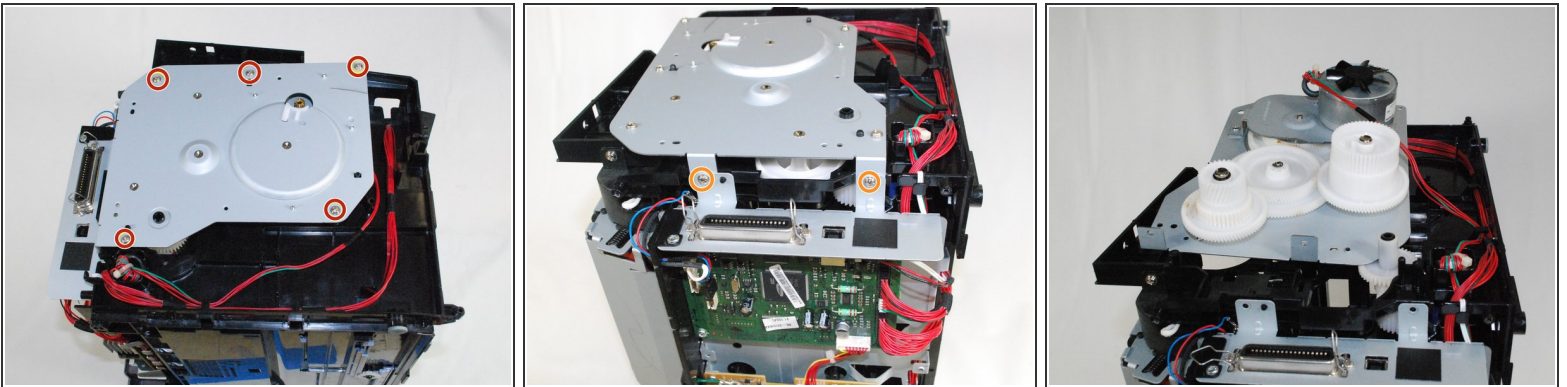
- Use plastic opening tool to gently lift one side of the top panel from its peg.
- Repeat the first process for the other side.
- Lift the top panel from the front of the printer to remove it entirely.

Step 7



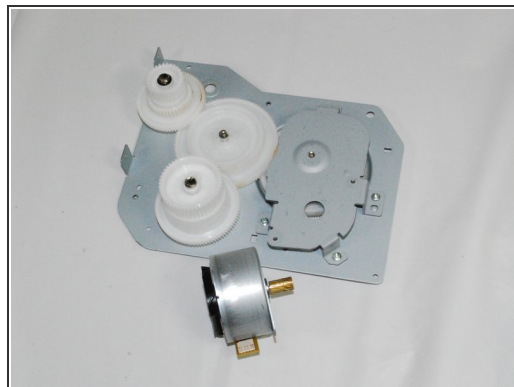
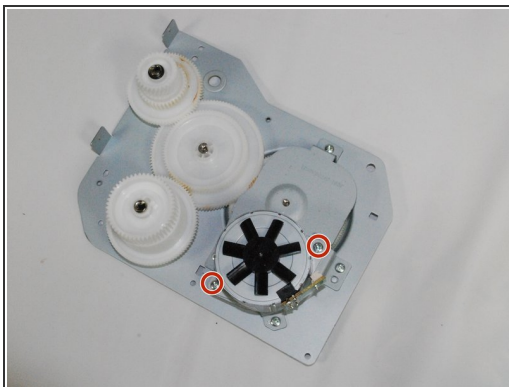
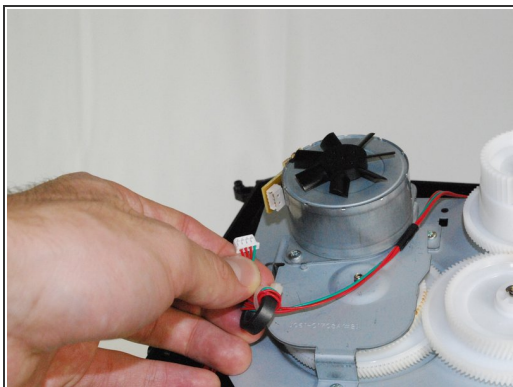
- Lift the left side panel up from the raised stops.
- Gently rotate the panel, as indicated in the picture, to remove the panel entirely.

Step 8



- Use Phillips #2 screwdriver to remove the five, 1", Phillips, PH#2 screws on the side metal panel.
- Remove the two, 1", Phillips, PH#2 screws on the back of the printer.
- Flip over the metal panel to reveal the gear mechanism.

Step 9



- Remove the cable attached to the motor.
- The entire panel can be removed from the rest of the printer.
- Use a Phillips #2 screwdriver to remove the motor from the panel by removing the two, 1", Phillips, PH#2 screws.
- Replace the motor and reassemble the printer by following the instructions in reverse order.