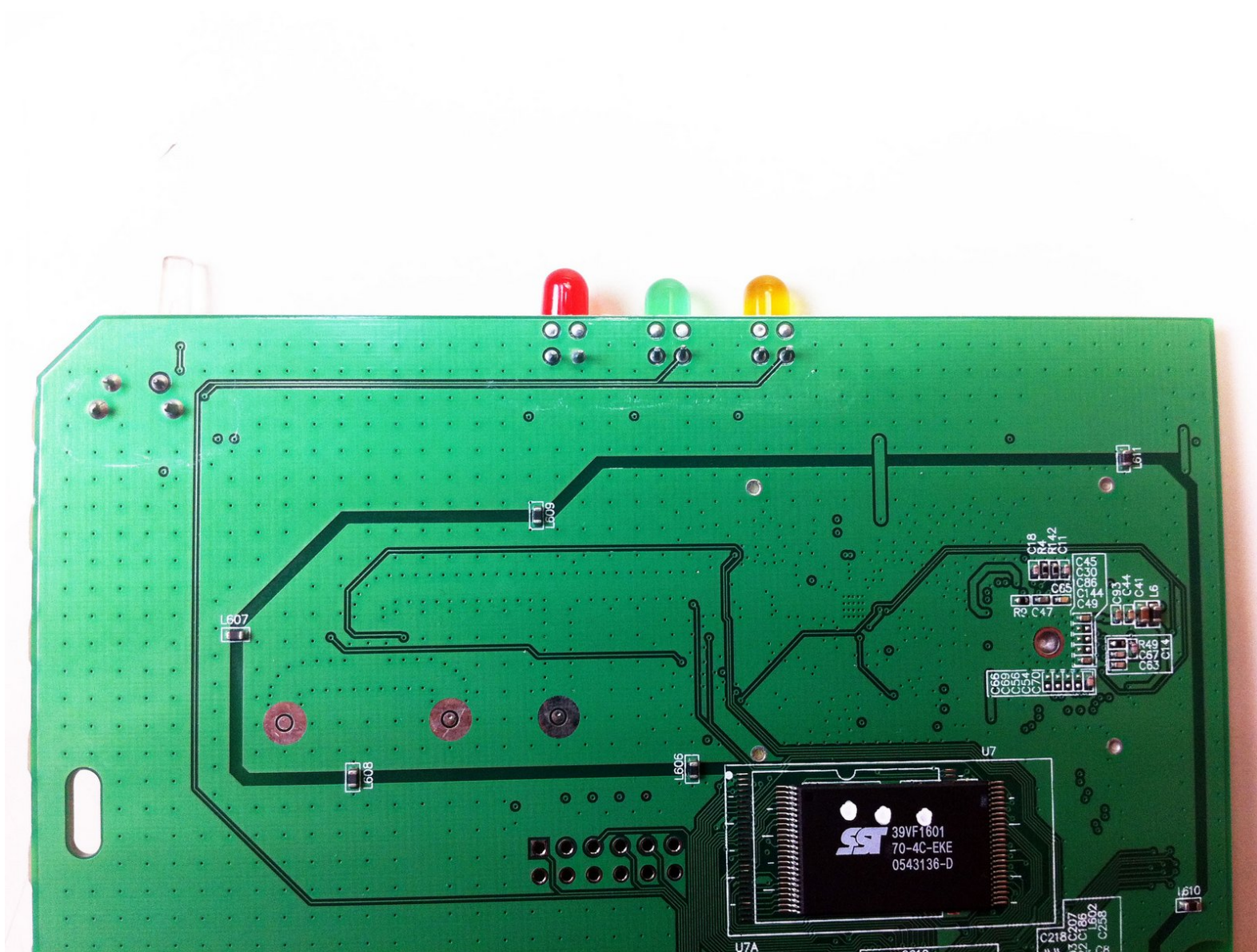




# Linksys WAP54g LED Lights Replacement

You will start by isolating the motherboard and...

Written By: Derek Myers



---

## INTRODUCTION

You will start by isolating the motherboard and then continue to make the suggested repairs by soldering.



### TOOLS:

- [Soldering Workstation](#) (1)
-

## Step 1 — Top Casing



- Power down and unplug the device.

## Step 2



- Remove the antennas from the back of the device. To do this, follow steps 1 and 2 of Installing the Antennas Guide: [Linksys WAP54g Antennas Replacement](#)

## Step 3



- Remove the two black rubber feet of the device using the screwdriver. The feet are located on the bottom towards the front.



## Step 4




- Once the feet are removed, two small screws will be visible. With a small screwdriver, unscrew them. Screws are phillips head, 4.35 mm in diameter, 7.88 mm in length.

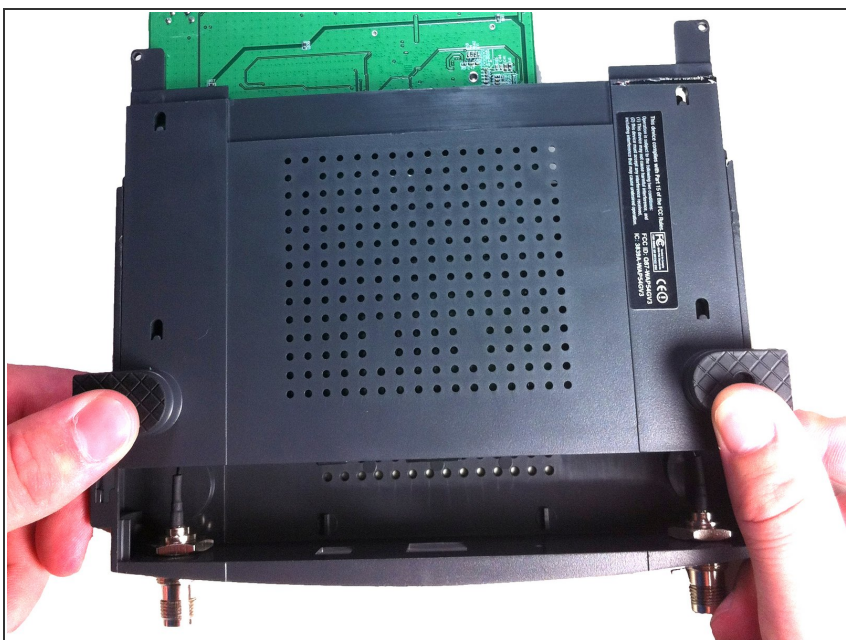
## Step 5



- To remove the front blue panel, grip firmly and place thumbs in the two notches on top. Push thumbs forward while keeping a firm grip on bottom.

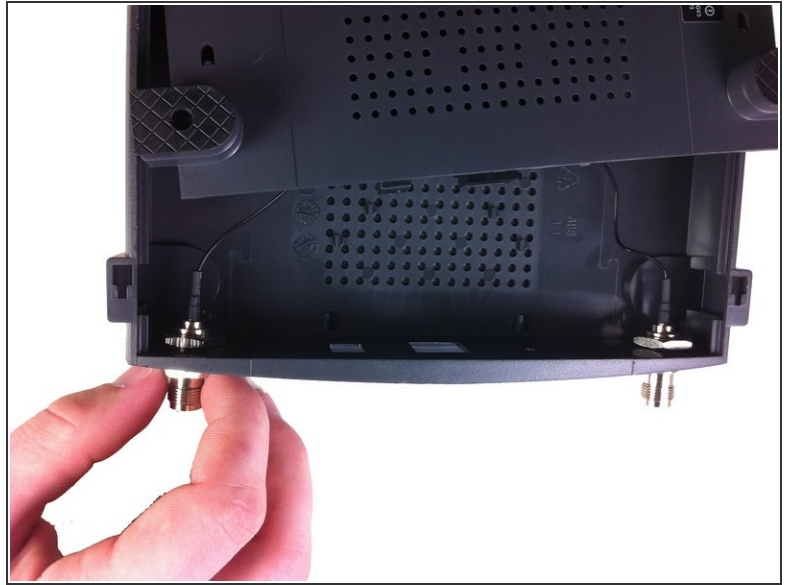
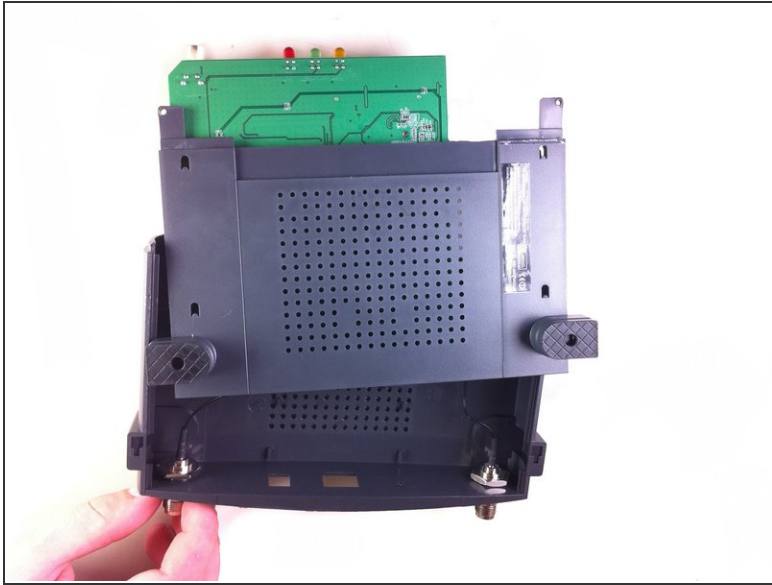
 This may require a bit of force.

## Step 6



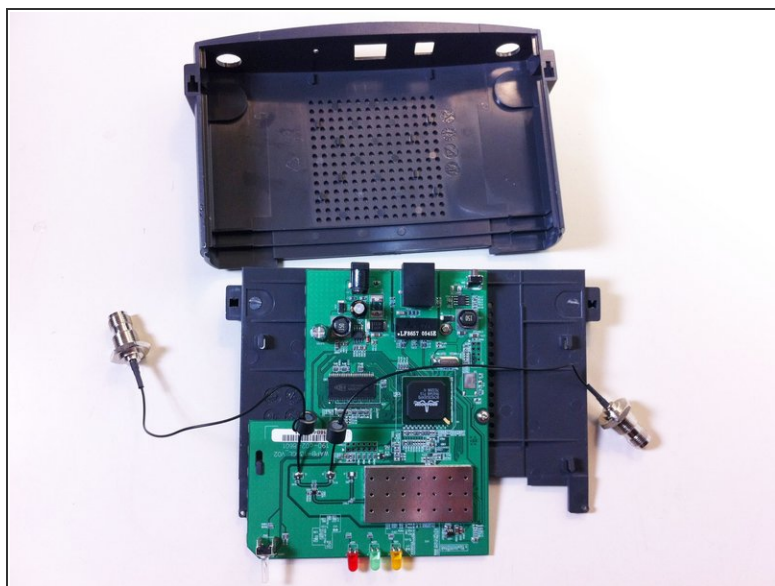
- Now slide the bottom panel forward and remove it so the top casing is isolated from the bottom casing and motherboard.

## Step 7



- Unscrew the nut on the outer side of the back casing. Remove the nut and the washer from both antenna mounts.

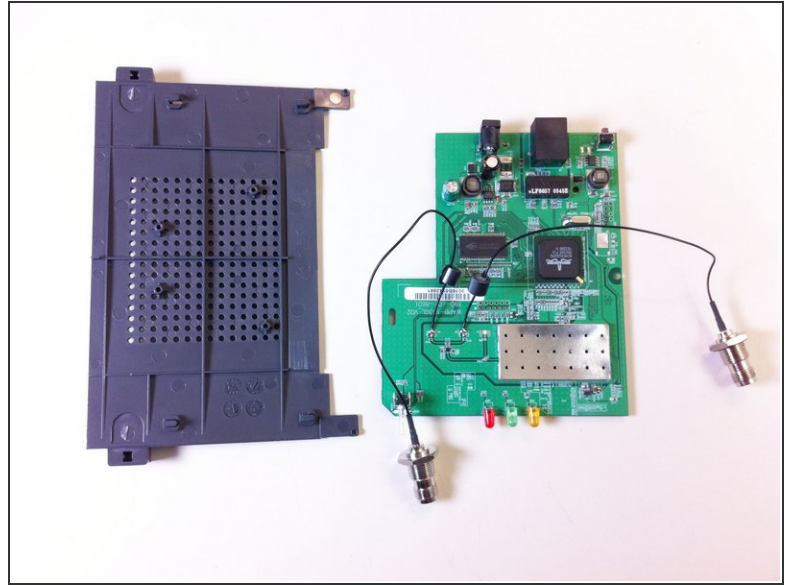
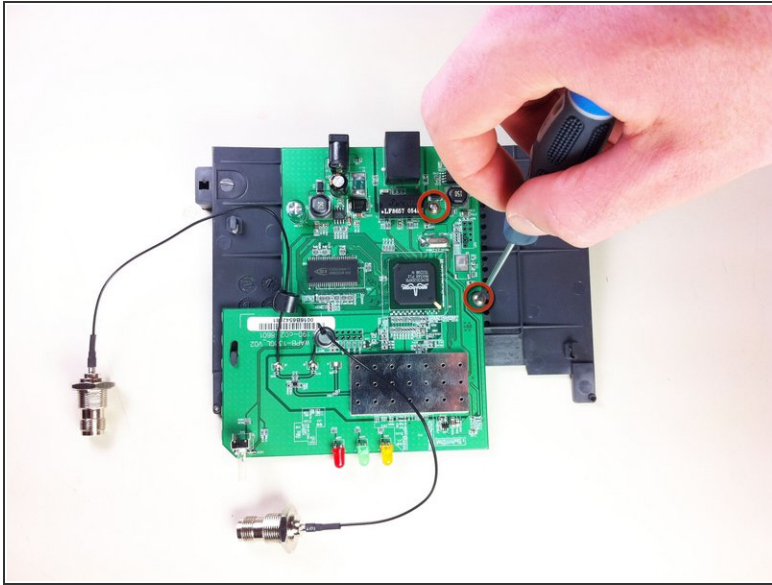
## Step 8



- From here, remove the wires and nuts connected to the back panel by pulling the nuts through the holes.
- Now the top casing has been removed and isolated from the rest of the device. From here, you can make repairs to the top casing.
- ⓘ Once the top panel is removed the main board will still be attached to the bottom panel.

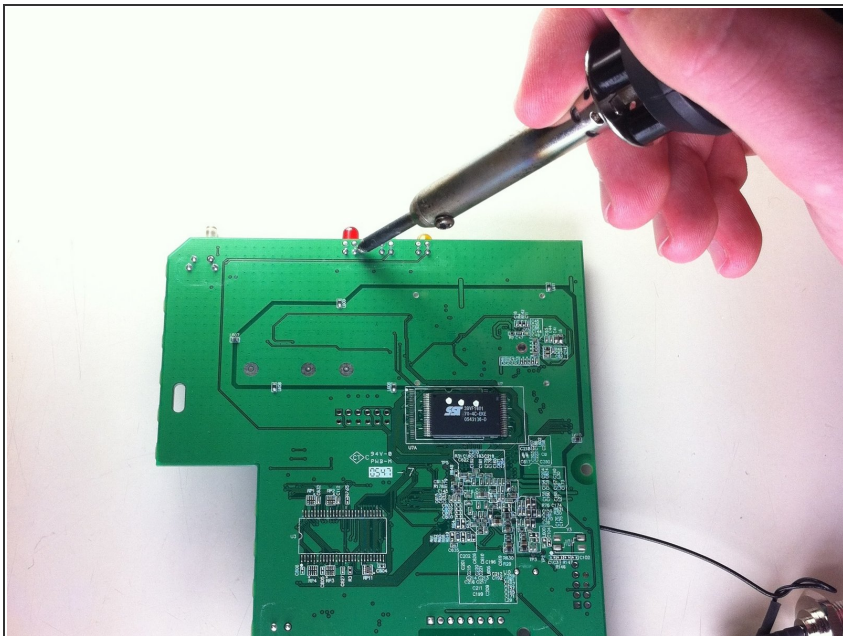


## Step 9 — Bottom Casing/Motherboard



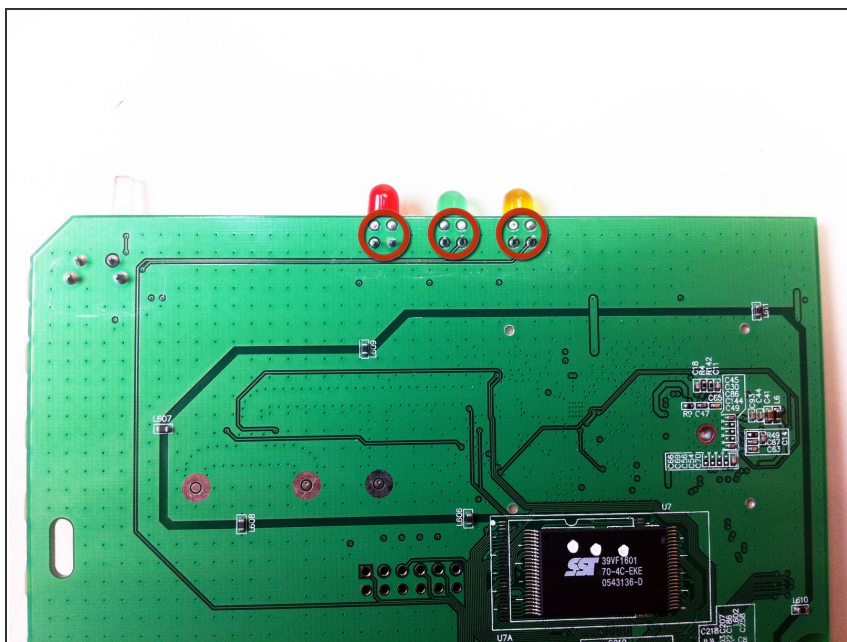
- Unscrew the two screws that connect the motherboard to the bottom casing.
- ⓘ The motherboard and bottom casing should be completely separated at this point. This allows for replacement of the motherboard and/ or its components as well as the bottom casing.

## Step 10 — LED Lights



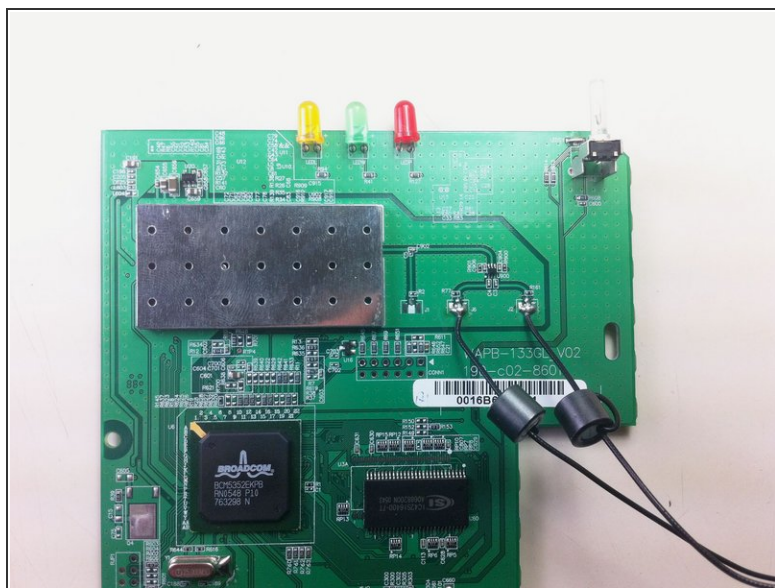
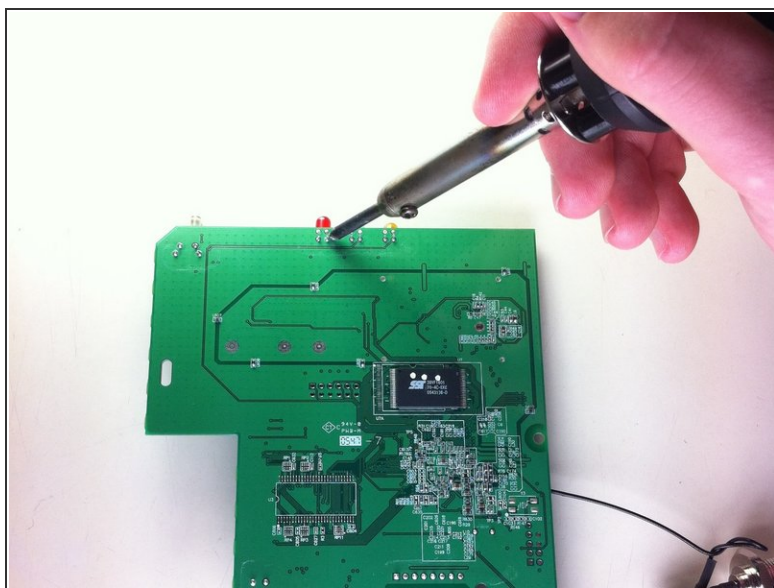
- Using a soldering iron, desolder the LED lights from the bottom of the logic board.
- For help with soldering or desoldering refer to ifixit's soldering guide: [How To Solder and Desolder Connections](#)

## Step 11



- Place new LED lights through holes created by desoldering and removing old lights.

## Step 12



- Solder the lights onto the bottom of the board to solidify the connection and make electrical contact.
- Follow the Installing the Casing guide in reverse to re-assemble your device.

Once the soldering is complete, the device should work and the LED lights should light up.