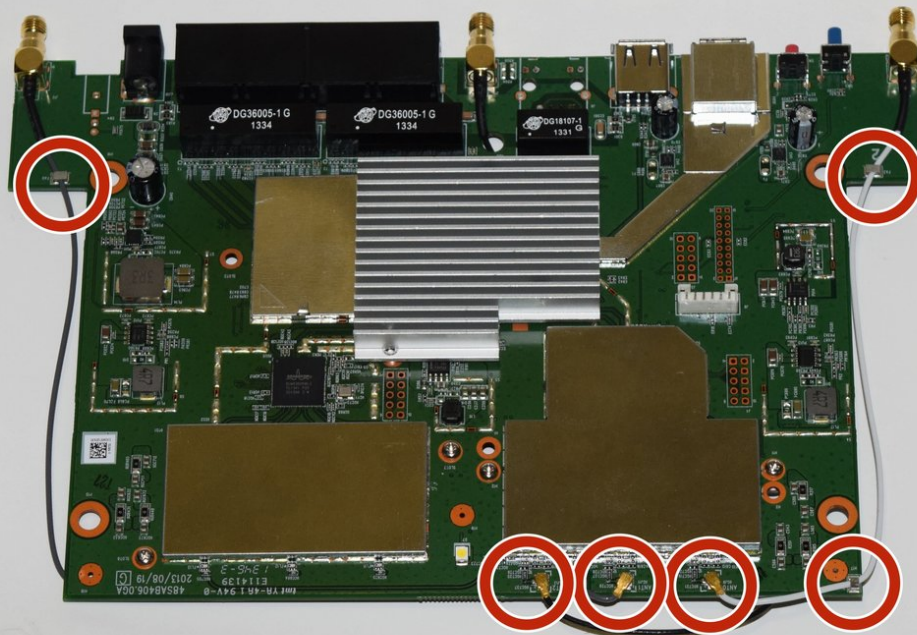




Linksys EA6900 Antenna Replacement

For optimal performance, antennas need to be fixed at a certain angle, if they are not staying in place, you can replace them with original or third party alternatives

Written By: Denis



INTRODUCTION

For optimal performance, the middle antenna needs to be pointed straight up and the side antennas should be angled outwards at +/- 30 degrees.

If the antennas are not staying in place, it could affect the performance of the router, and you need to be replace them.

TOOLS:

- [Tweezers](#) (1)
 - [Phillips #1 Screwdriver](#) (1)
 - [iFixit Opening Tools](#) (1)
 - [Solder](#) (1)
 - [Spudger](#) (1)
 - [Soldering Iron](#) (1)
-

Step 1 — Linksys EA6900 Disassembly



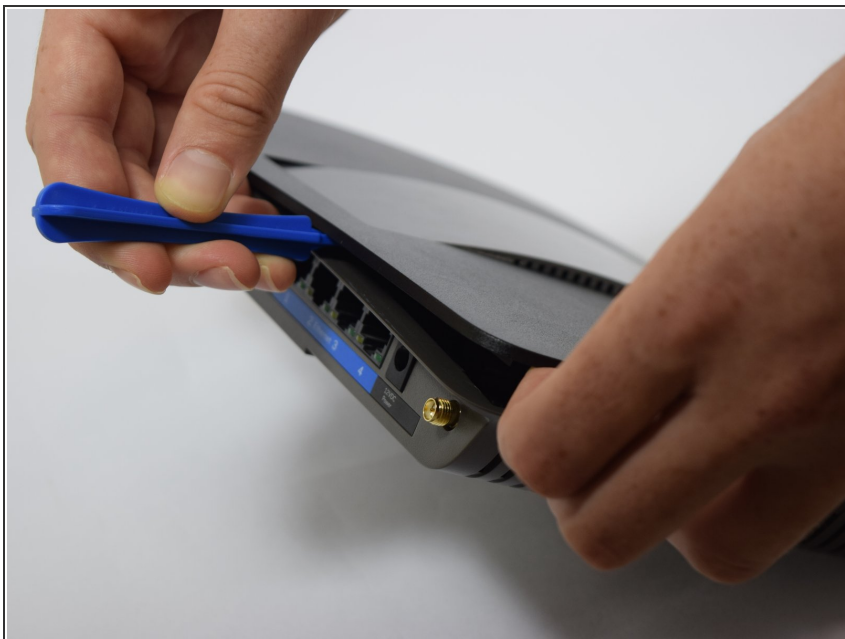
- Remove the antennas by unscrewing them from the base.
- Flip over the device and locate the four rubber feet on the bottom.
- Remove the rubber feet with tweezers

Step 2



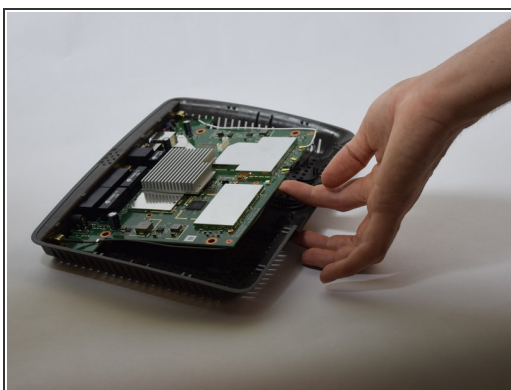
- Remove the 0.4cm head screws from each slot with the #1 Phillips head Screwdriver.

Step 3



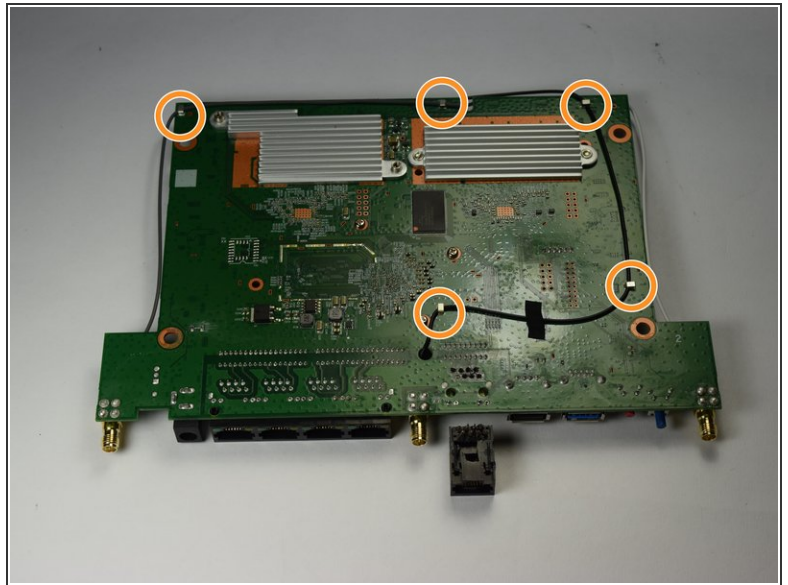
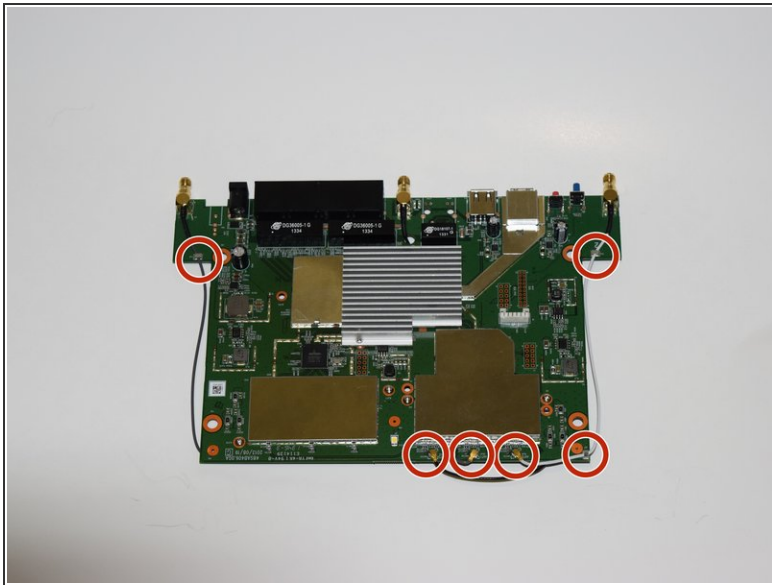
- Use a blue plastic opening tool to remove the top cover.
- Move the blue plastic opening tool gently underneath the top cover from side to side.

Step 4



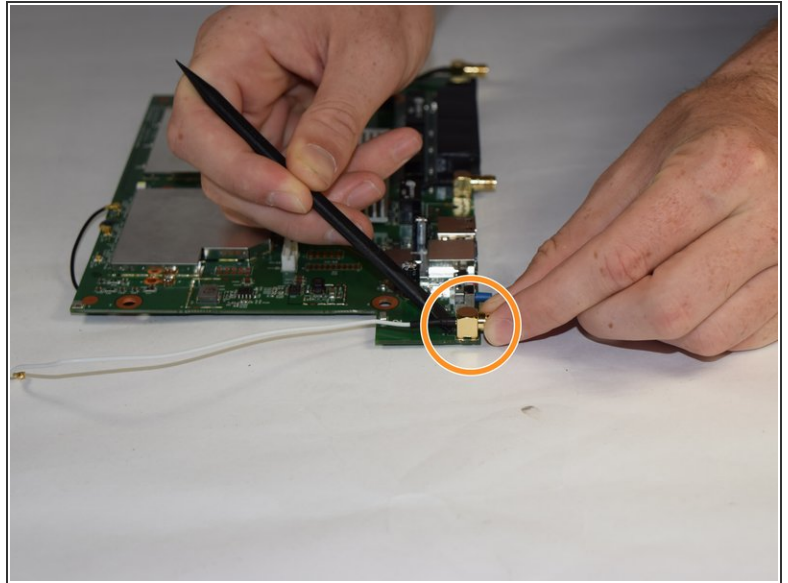
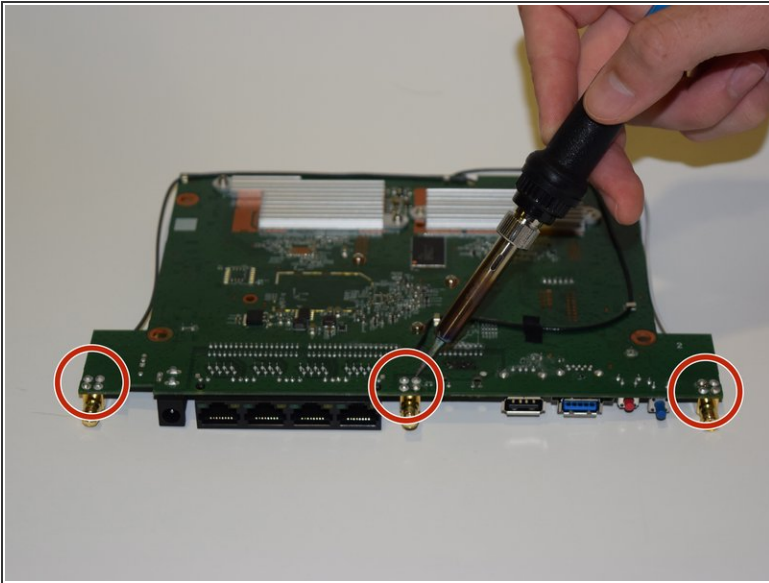
- Gently lift the motherboard and remove it from the case
- Put the motherboard over a (preferably white) surface.

Step 5 — Antenna



- Detach the wires from the motherboard.
- Flip the motherboard and repeat the process.

Step 6



- Locate the four solder points on each port and melt them using a soldering iron.
- ⚠ Wait between five and seven minutes for the ports to cool down.
- Remove each port using a nylon spudger

To reassemble your device, follow these instructions in reverse order.