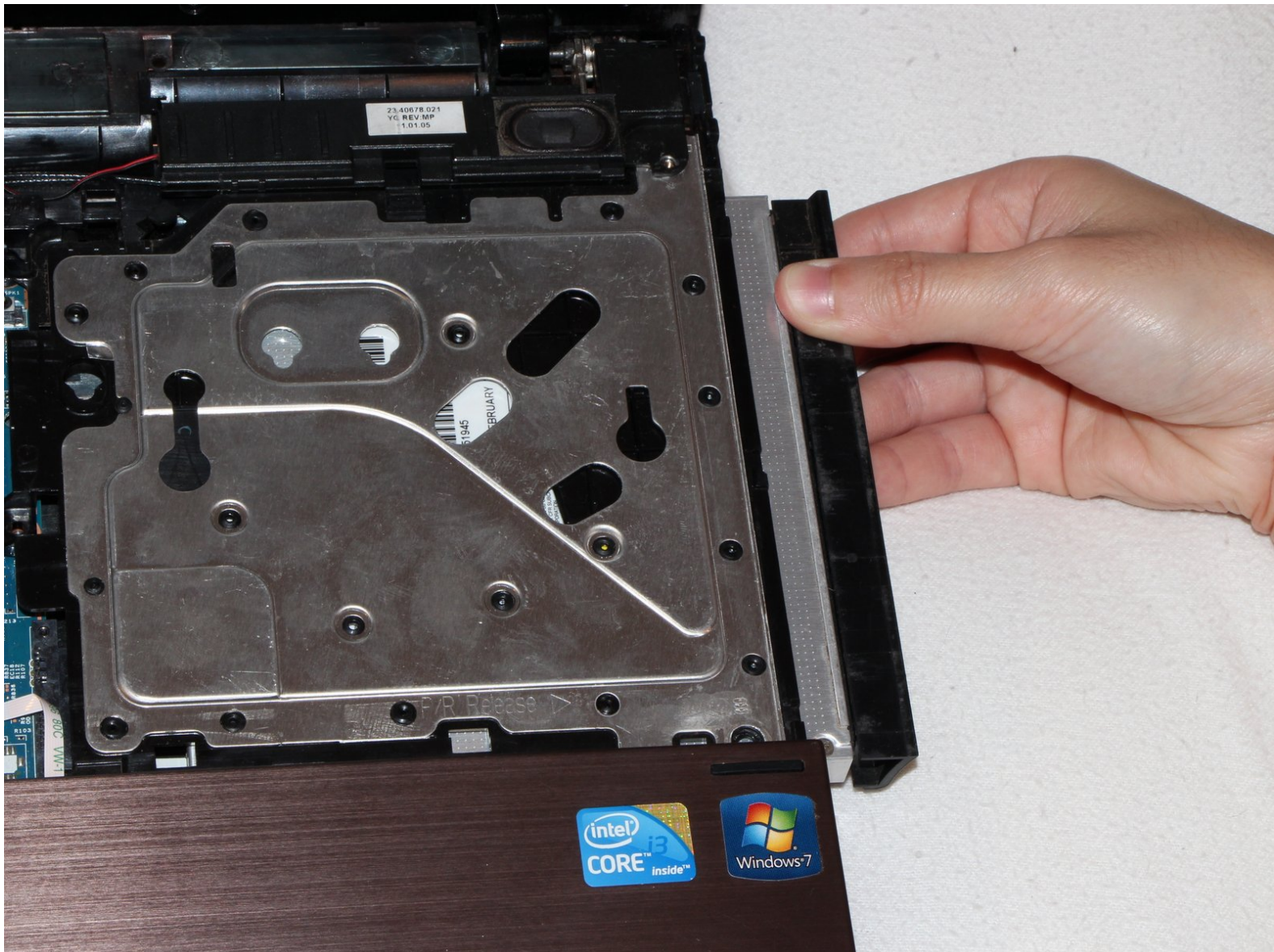




HP ProBook 4520s Optical Drive Replacement

This guide will provide instructions to replace the optical drive in your HP ProBook 4520s.

Written By: Nicholas Caruso



INTRODUCTION

If your 4520s can't read CD's or DVD's, you might have a faulty optical drive. Replacing the optical drive may solve the problem.



TOOLS:

- [Phillips #1 Screwdriver](#) (1)
 - [Metal Spudger](#) (1)
-

Step 1 — Battery



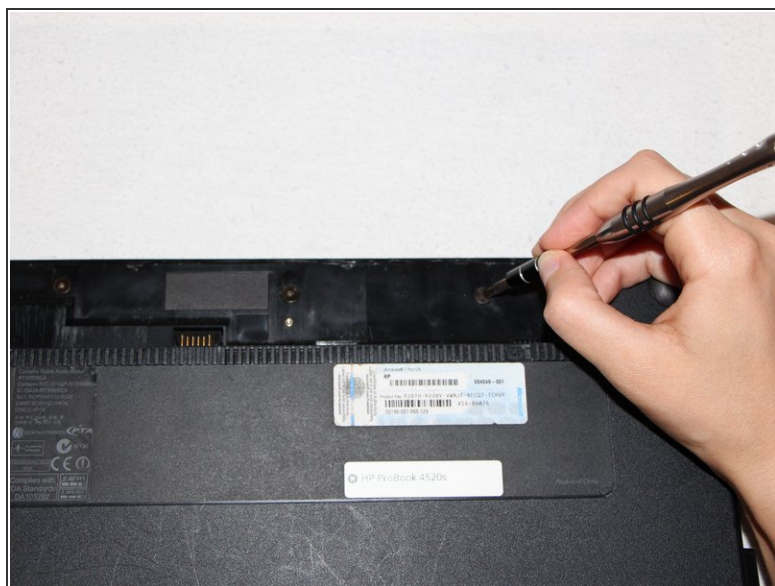
- Flip the 4520s upside-down with the front toward you.
- Push the two latches below the battery inwards at the same time.

Step 2



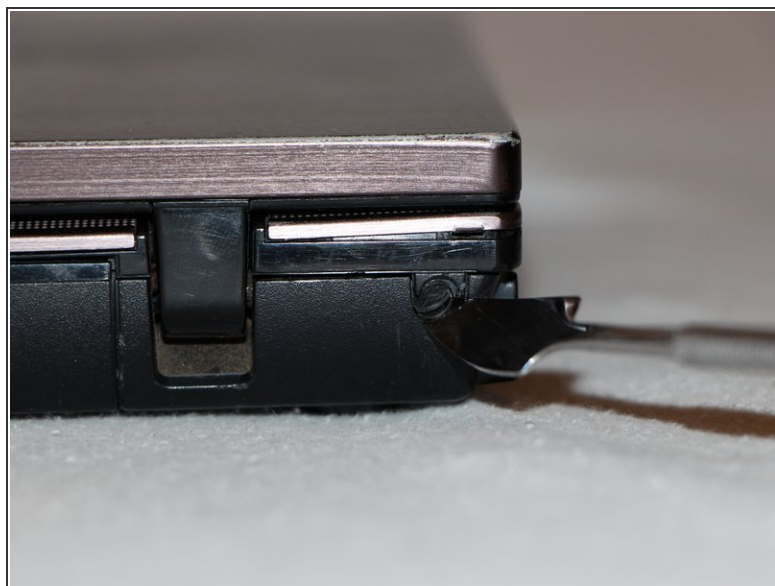
- Remove the battery by holding the latches and sliding the battery away from you.

Step 3 — Switch Cover



- Use a Phillips #1 screwdriver to remove three 2mm screws where the battery was located.

Step 4



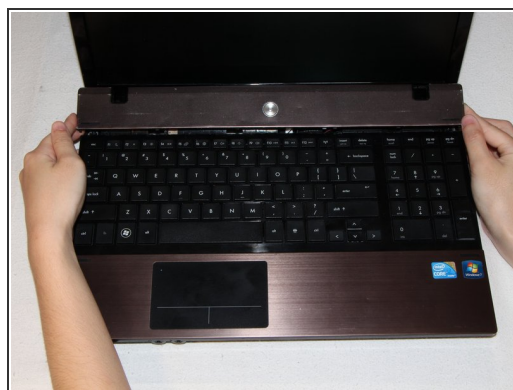
- Flip the 4520s over and rotate it so the back is facing you.
- Use a metal spudger to peel off two rubber caps located on either side of the battery port.

Step 5



- Use a Phillips #1 screwdriver to remove the 3mm screws behind the caps.

Step 6



- Rotate the 4520s and then open it with the screen facing you.
- The switch cover is located above the keyboard. Push the switch cover away from you until it comes loose from the 4520s.
- Lift the switch cover away from the 4520s and set it aside.

Step 7 — Keyboard



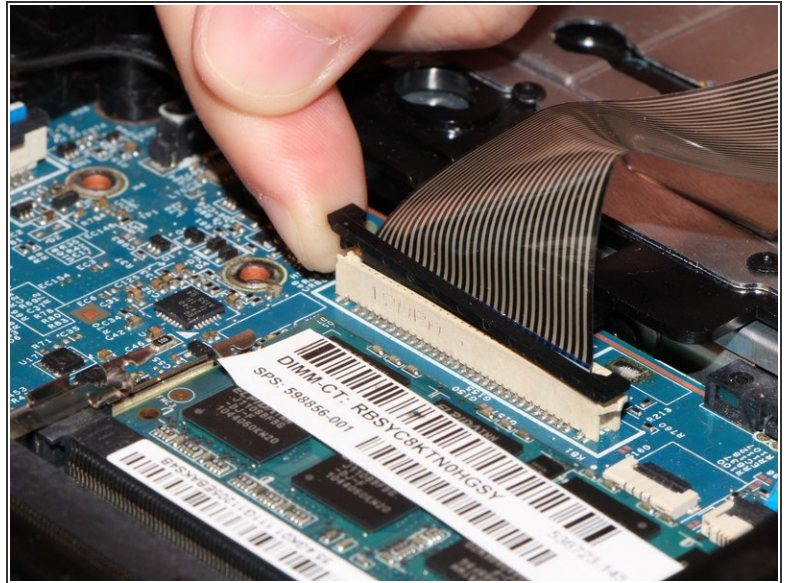
- Use a Phillips #1 screwdriver to remove the two 7mm screws located on either side of the keyboard panel.

Step 8



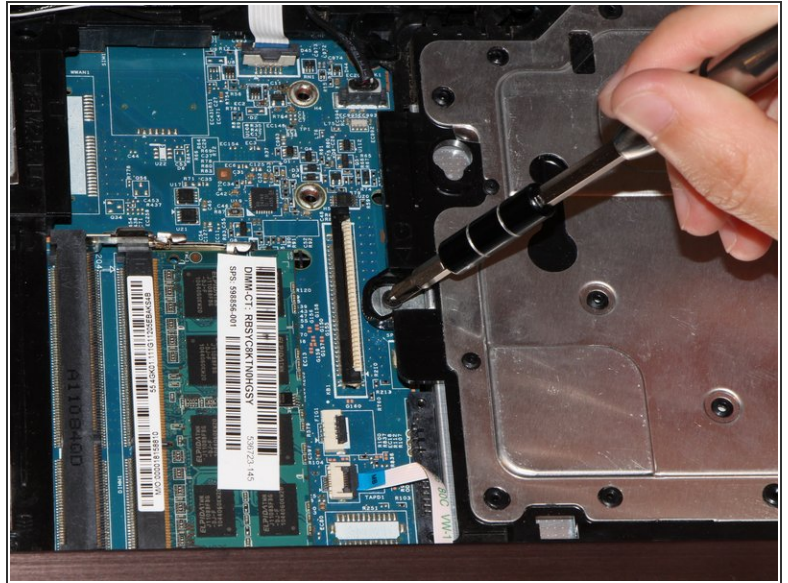
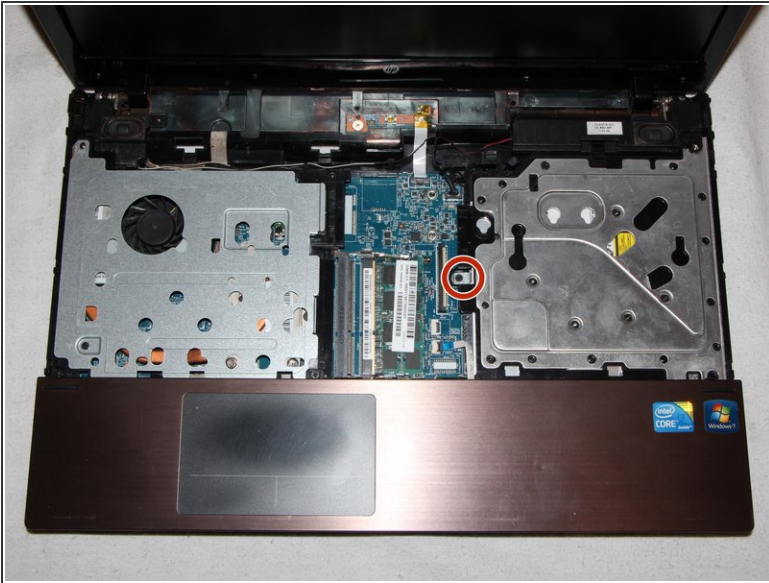
- Slide the keyboard panel away from you to free it from the 4520s.
- ⚠ Do not yank the keyboard panel away from the 4520s. This may damage the cable.

Step 9



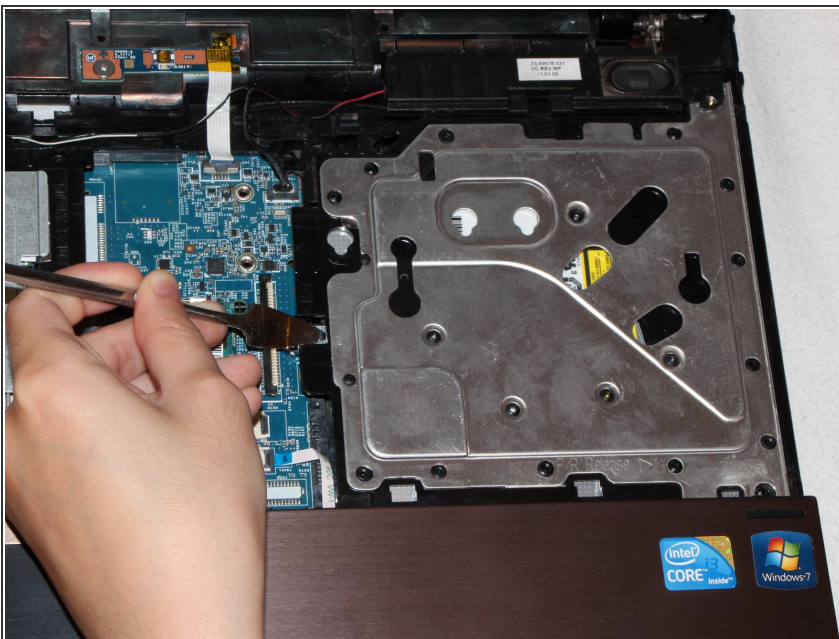
- Gently raise up the keyboard and flip it over to reveal a ribbon cable.
 - Release the ribbon cable by carefully lifting the black tab upwards, one side at a time.
 - Remove the cable and lift the keyboard panel up. Set it aside.
- ☒ When reassembling, feed the ribbon cable into the port. Press down on the tab to pinch the cable in place.

Step 10 — Optical Drive



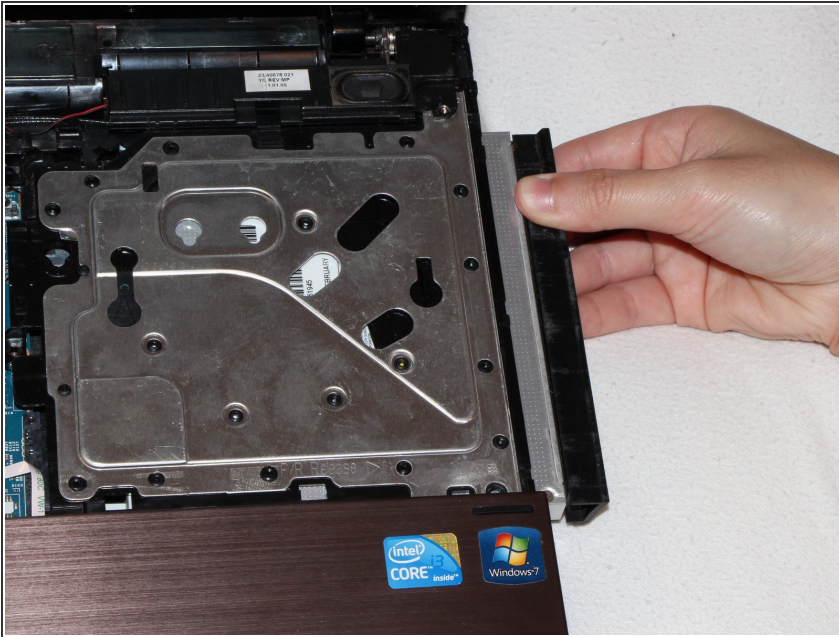
- The housing for the optical drive is on the right of the device.
- Remove the 5mm screw on the left side of the metal plate with a Phillips (PH1) head screwdriver.

Step 11



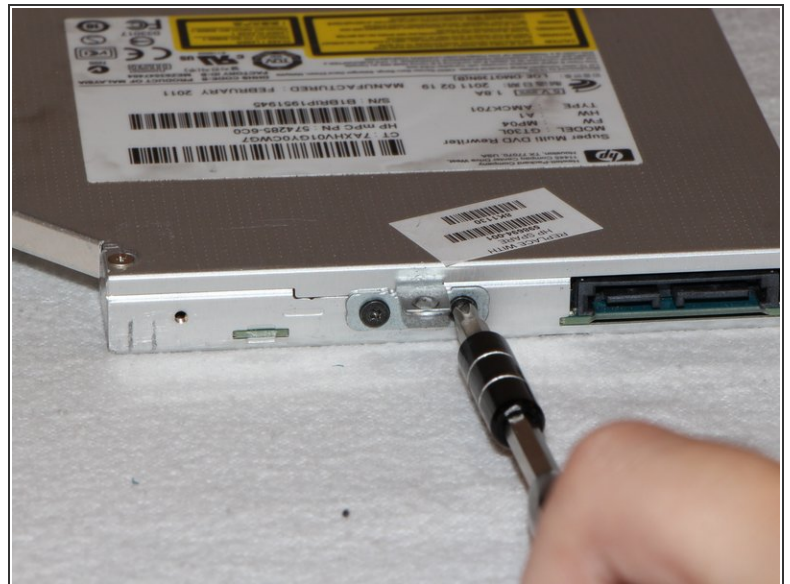
- Use a metal spudger to push the optical drive to the right and partially out of the casing.

Step 12



- Slide the optical drive outward from the 4520s.

Step 13



- Use a Phillips (PH1) head screwdriver to remove two 2mm screws securing the metal tab to the optical drive.

To reassemble your device, follow these instructions in reverse order.

This document was generated on 2020-11-20 10:03:14 PM (MST).

