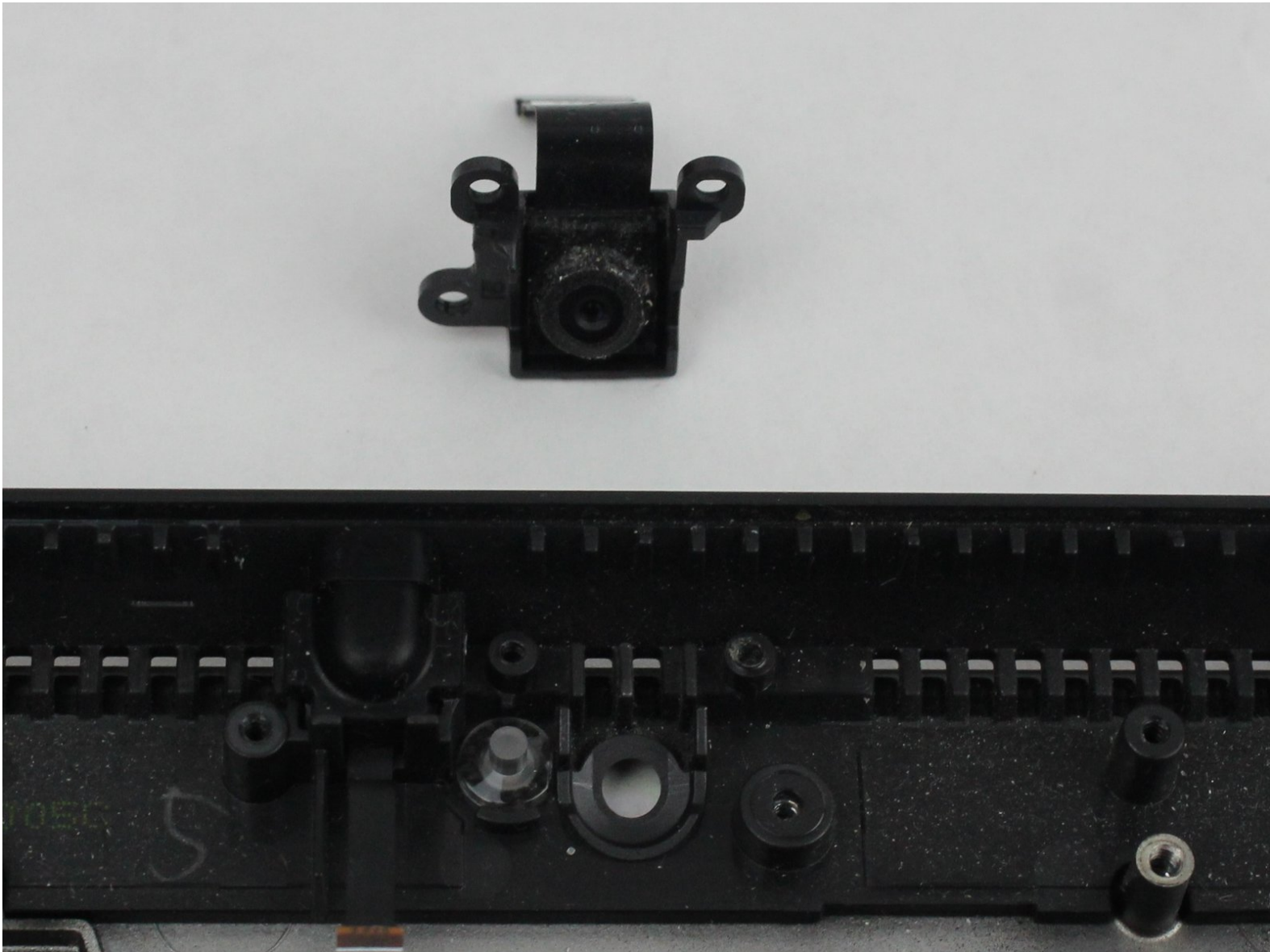




Microsoft Surface Pro 2 Camera Replacement

This guide shows the user how to replace the camera in a Microsoft Surface Pro 2.

Written By: [abdulhameeda](#)





TOOLS:

- [iFixit Opening Tool](#) (1)
- [Suction Handle](#) (1)
- [Heat Gun](#) (1)
- [Spudger](#) (1)
- [T3 Torx Screwdriver](#) (1)
- [T4 Torx Screwdriver](#) (1)
- [T5 Torx Screwdriver](#) (1)

Step 1 — LCD Display



⚠ To avoid electrical shocks, unplug and turn off your Surface Pro 2 before proceeding.

Step 2



⚠ Avoid any skin or eye contact with the heating pad or heating gun because they may cause bodily harm.

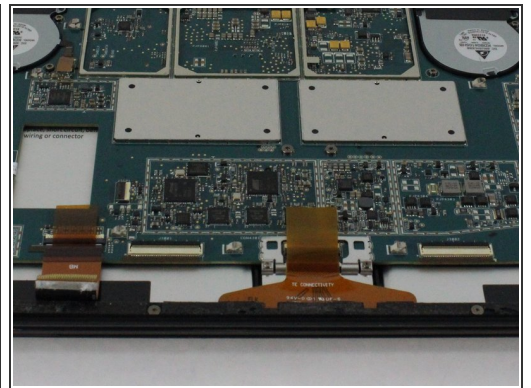
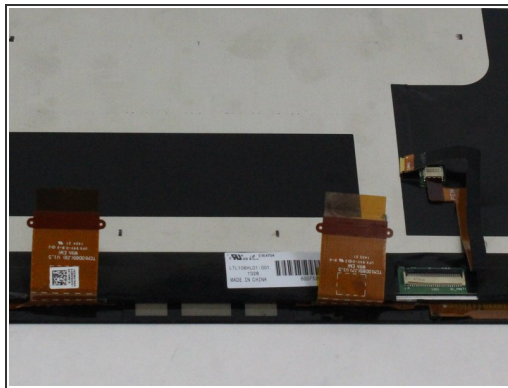
- Using a heating pad or heating gun, heat the edges of the screen to soften the glue. This area extends roughly one inch from the edge of the device.
- ⓘ The glue is under the darker border of the device display.

Step 3



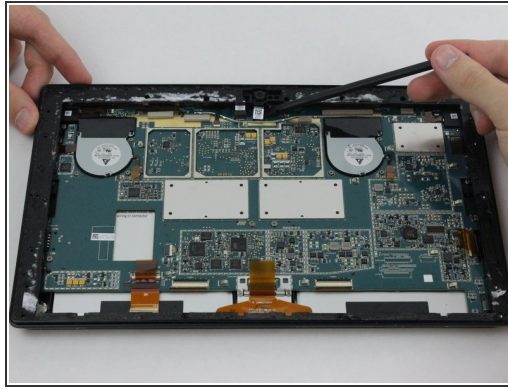
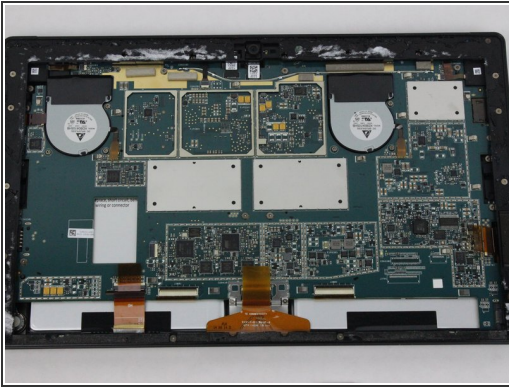
- Using a plastic opening tool and a suction cup as needed for leverage, gently insert one edge of the opening tool under the corner of the screen.
- ❗ If the tool does not easily slide under the screen, return to heating before proceeding.
- Slowly work the tool around the entire edge of the screen.

Step 4



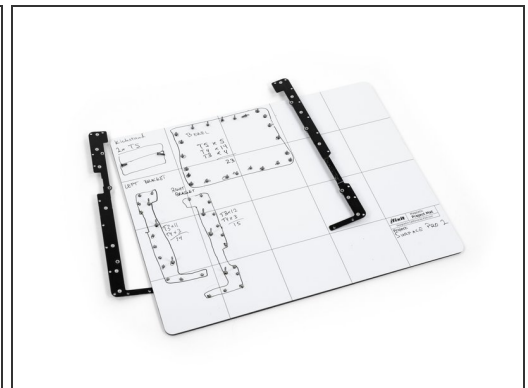
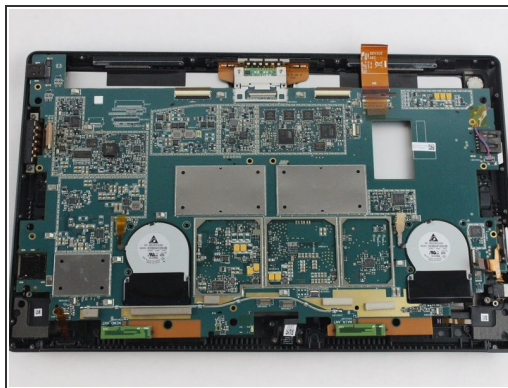
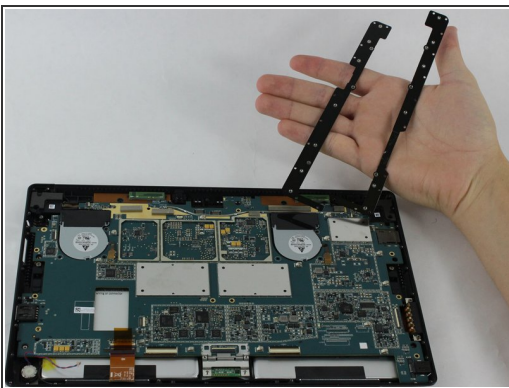
- Detach the orange cables that connect the screen to the motherboard by pulling on the small tabs. Using the nylon spudger, release these cables.
- ❗ Please note the third small connector in red.
- Allow the glue to cool before letting it come into contact with any other surface.

Step 5 — Motherboard



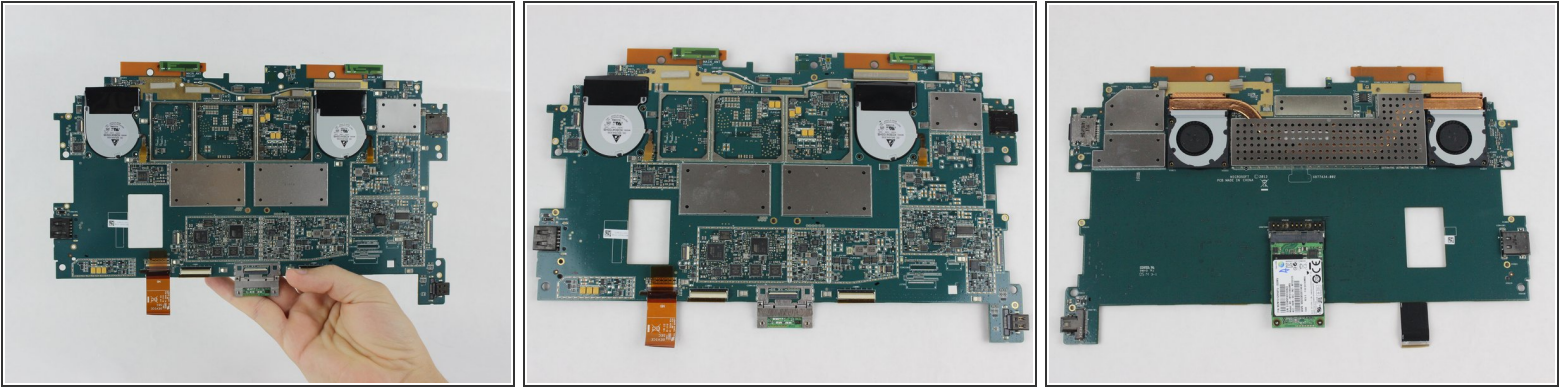
- Make sure that the front-facing camera is completely disconnected, and then remove the plastic bracket.
 - Remove the 22 screws on the bezel.
 - Remove the left and right brackets; the left has 16 screws and the right has 15 screws.
- ★ The three different torx screws used are T3, T4, and T5.

Step 6



- Once the brackets are removed, set them aside.
- ⓘ The motherboard itself also has screws.
- Remove the 25 screws of varying sizes that attach the motherboard to the back plate.
- ⓘ View the attached photo of a screw diagram to help keep track of your screws.

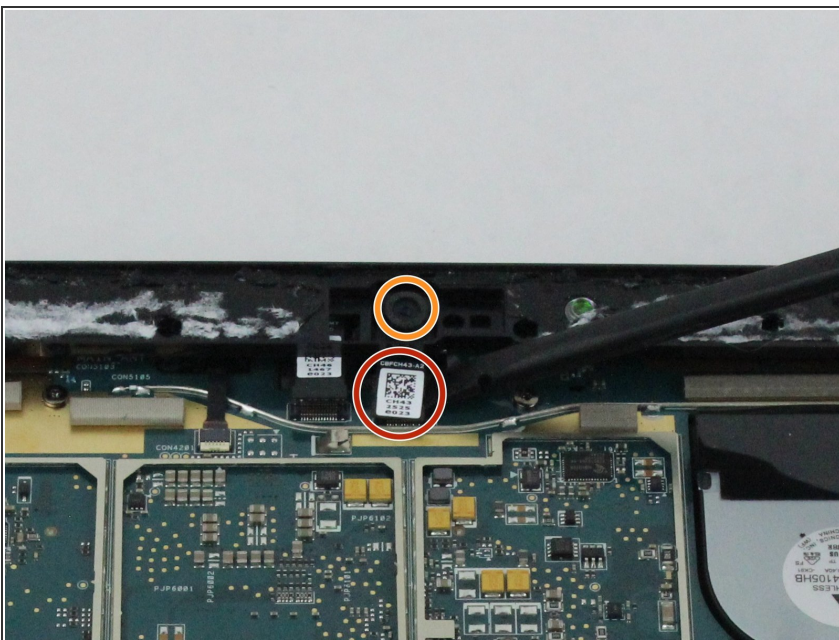
Step 7



 You have now completely removed the motherboard, and it should look like the pictures shown.

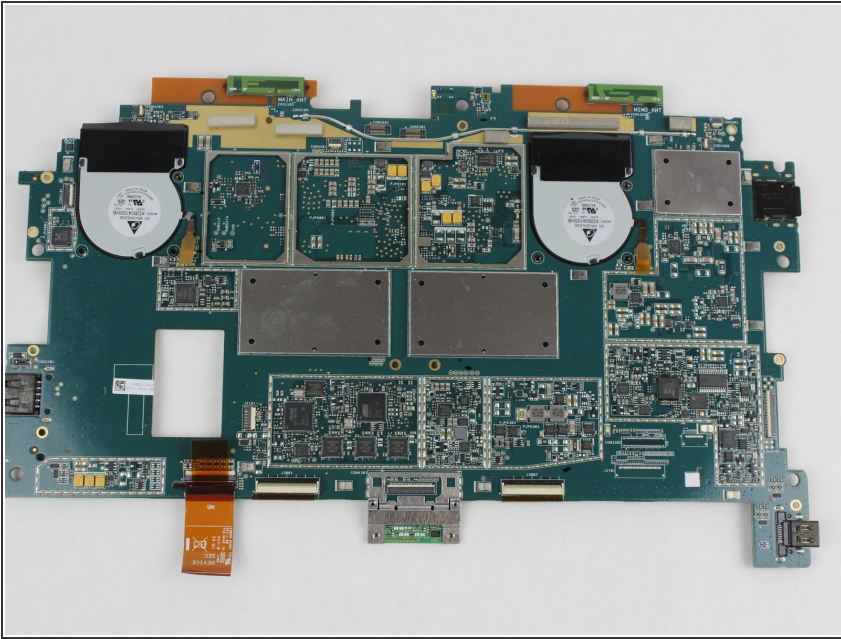
 Be sure to be cautious with all the connections with the cables on the motherboard.

Step 8 — Camera



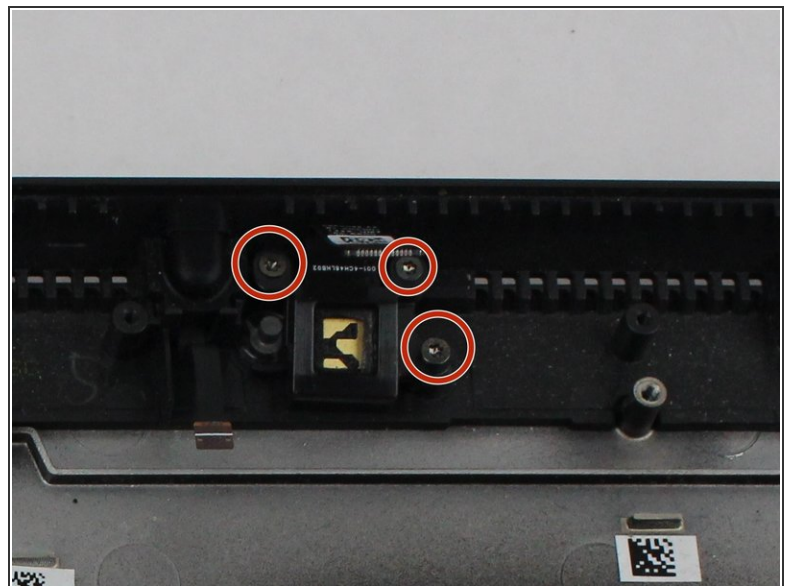
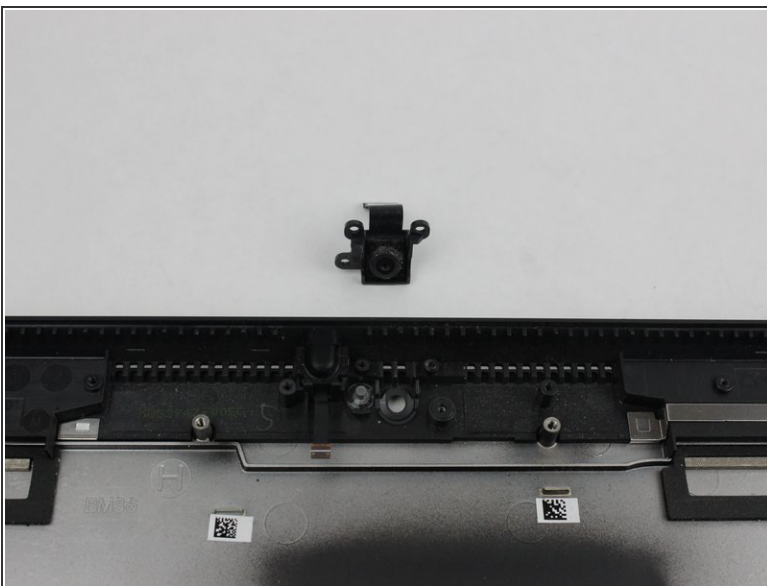
- Remove the ribbon that the spudger is touching in the picture.
- Remove the front-facing camera.

Step 9



- If you have not done so yet, follow the steps here: [Microsoft Surface Pro 2 Motherboard Replacement Guide](#).

Step 10



- ① The ribbon was removed previously in the [Microsoft Surface Pro 2 Motherboard Replacement Guide](#).

- Remove the three screws that are circled.
- Remove the rear-facing camera.

This document was generated on 2022-01-03 05:12:21 PM (MST).

To reassemble your device, follow these instructions in reverse order.