



LG G2 Sprint Vibe Motor Replacement

A quick guide to replace the LG G2 vibe motor

Written By: Roberta Spathari



INTRODUCTION

The vibe motor requires most of the phone to be dissected. Make sure to keep track of all screws and parts that are removed. Pay close attention to the guide for parts that are glued and not screwed or clipped into the phone.



TOOLS:

- [iFixit Opening Tools](#) (1)
- [Phillips #0 Screwdriver](#) (1)
- [Phillips #000 Screwdriver](#) (1)
- [Spudger](#) (1)



PARTS:

- [LG G2 Vibrator](#) (1)

Step 1 — Charger Port



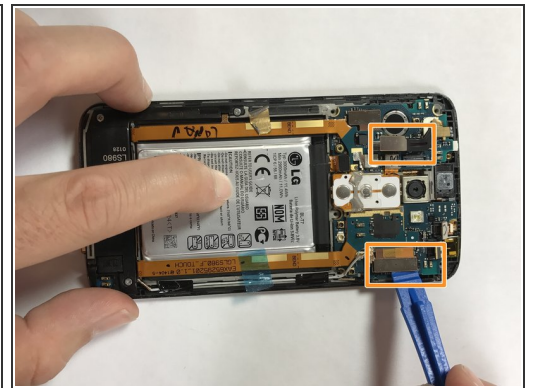
- Use a plastic opening tool to pry open your phone case. Flip the phone over and start by sliding your tool between the two sides of your phone case. Work the tool towards the bottom of the phone case, gently prying the case open. There is a clip that will pop open after applying gentle but consistent pressure.
- Make sure to release the clip on the top left corner of the phone case carefully. This is usually the most difficult clip to release.

Step 2



- After removing the outer phone case, you will need two Phillips head bits. One J0 and one J000 size.
- There are 11 silver screws for which you have to use J0 head bits, and 1 small black screw for which you have to use a J000 head bit.

Step 3



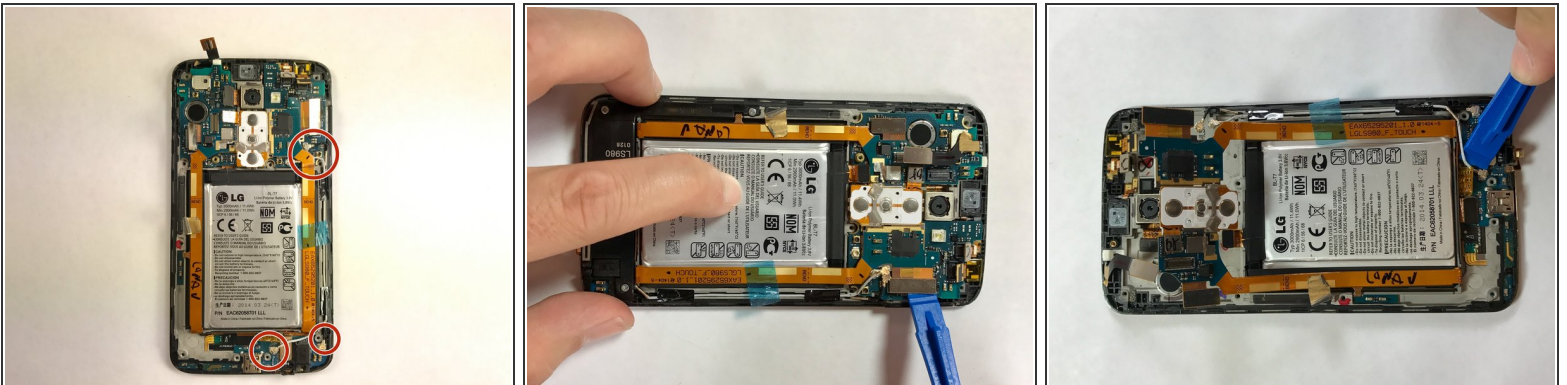
- There is a clip on the upper left side of the upper panel. Use the plastic opening tool to pry the clip off of the phone.
- ⚠ The upper inside panel flips up easily off of the phone case once all the clips and screws are removed. If the panel does not pull off easily, check that you have removed all of the screws.
- There are ribbons that need to be removed as well. Be sure to carefully pry them off of the board

Step 4



- The bottom inside panel should pry back easily after you take out the screws. Again, if the panel does not pull off easily, you may have missed a screw.

Step 5



- There are several clips and circuits that need to be released. They are circled in the images above. Be careful not to break any of the attached ribbon or wires. (circle ribbons etc.)

⚠ Be careful to use your tools to disconnect the cables at the connectors and not along the wire.

Step 6



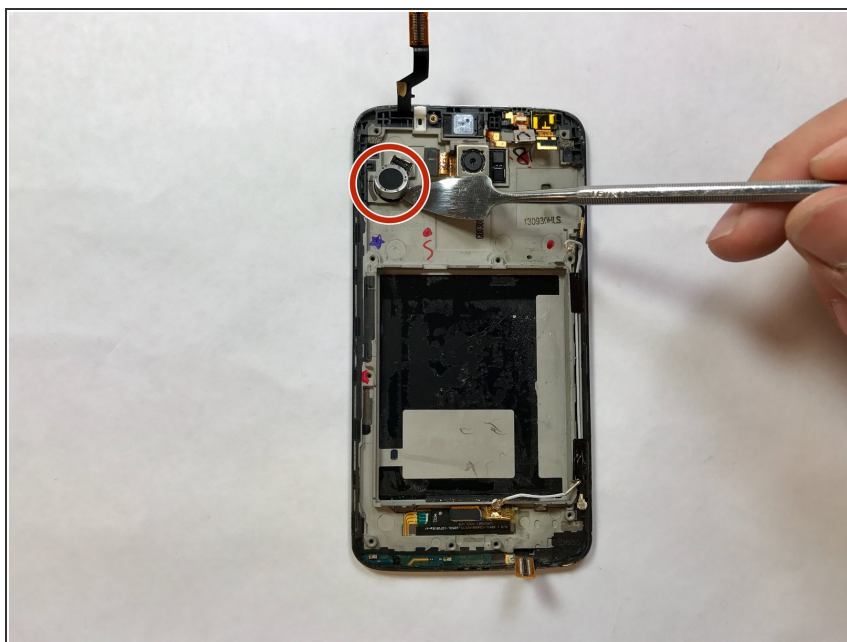
- There are several clips and circuits that need to be released. They are circled in the images above. Be careful not to break any of the attached ribbon or wires.
- ⓘ The orange materials is meant to bend along the dotted line labeled “bend.” Try to make the bend as close to this line as possible.

Step 7



- After you have disconnected all of the ribbon and antennae connections, you can remove the board. Gently pry the board up from the bottom of the case and slide it back out.
- Make sure to remove all ribbon connectors from the board prior to removing the board.

Step 8 — Vibe Motor



- The vibe motor is attached to the phone case with adhesive. Make sure to use your plastic prying tool to softly remove the motor from the case.

⚠ Only use a plastic or ESD safe tool when removing components such as the camera.

To reassemble your device, follow these instructions in reverse order.