



# MacBook Pro 13" Unibody Late 2011 Upper Case Replacement

Replacing the upper case requires the removal...

Written By: Phillip Takahashi



# INTRODUCTION

[video: <http://www.youtube.com/watch?v=B3oGp1IaQIM>]

Replacing the upper case requires the removal of nearly every component in your MacBook Pro. You will also need to transfer your old trackpad over to your new upper case.



## TOOLS:

Phillips #00 Screwdriver (1)  
iFixit Opening Tool (1)  
Spudger (1)  
T6 Torx Screwdriver (1)  
TR8 Torx Security Screwdriver (1)  
Tri-point Y0 Screwdriver (1)



## PARTS:

MacBook Pro 13" Unibody (Early 2011/Late 2011) Upper Case (1)

## Step 1 — Lower Case



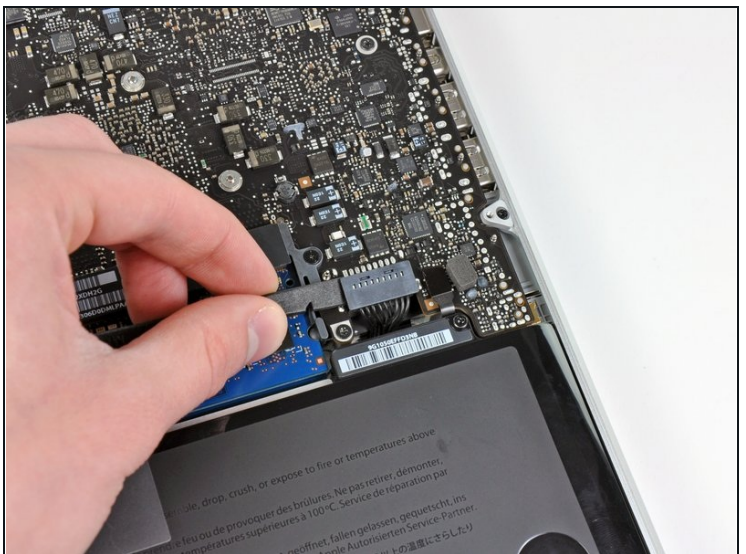
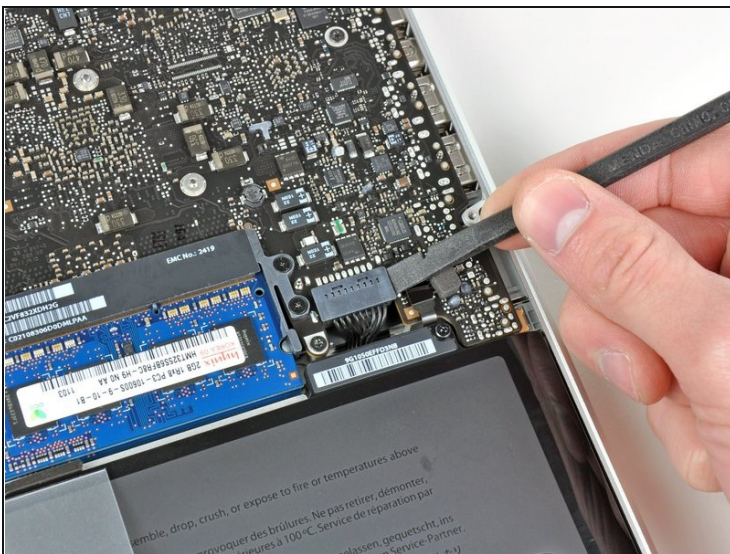
- Remove the following ten screws:
  - Three 14.4 mm Phillips #00 screws
  - Three 3.5 mm Phillips #00 screws
  - Four 3.5 mm shouldered Phillips #00 screws
- ⓘ When replacing the small screws, align them perpendicular to the slight curvature of the case (they don't go straight down).

## Step 2



- Use your fingers to pry the lower case away from the body of the MacBook near the vent.
- Remove the lower case.

## Step 3 — Battery Connection



- Use the edge of a spudger to pry the battery connector upwards from its socket on the logic board.
- ⓘ It is useful to pry upward on both short sides of the connector to "walk" it out of its socket. Be careful with the corners of the connectors, they can be easily broken off.

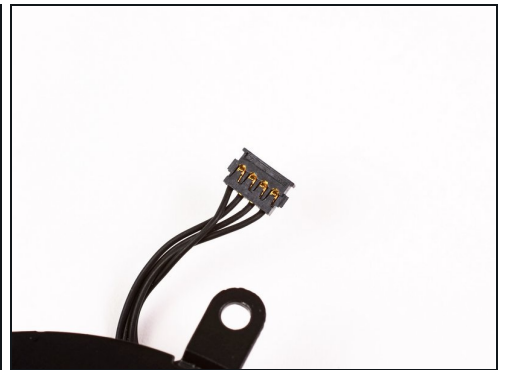
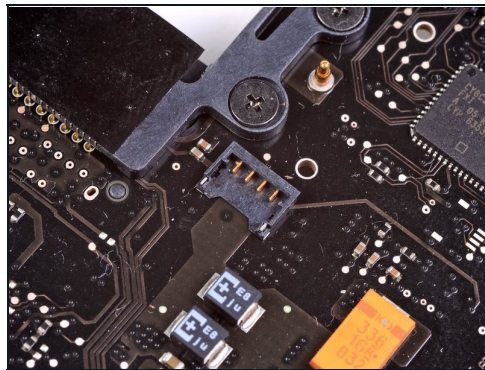


## Step 4



- Bend the battery cable slightly away from its socket on the logic board so it does not accidentally connect itself while you work.

## Step 5 — Fan



- Use the edge of a spudger to gently pry the fan connector up and out of its socket on the logic board.
- ⓘ It is useful to twist the spudger axially from beneath the fan cable wires to release the connector.
- ⚠ The fan socket and the fan connector can be seen in the second and third pictures. Be careful not to break the plastic fan socket off the logic board as you use your spudger to lift the fan connector straight up and out of its socket. The layout of the logic board shown in the second picture may look slightly different than your machine but the fan socket is the same.



## Step 6



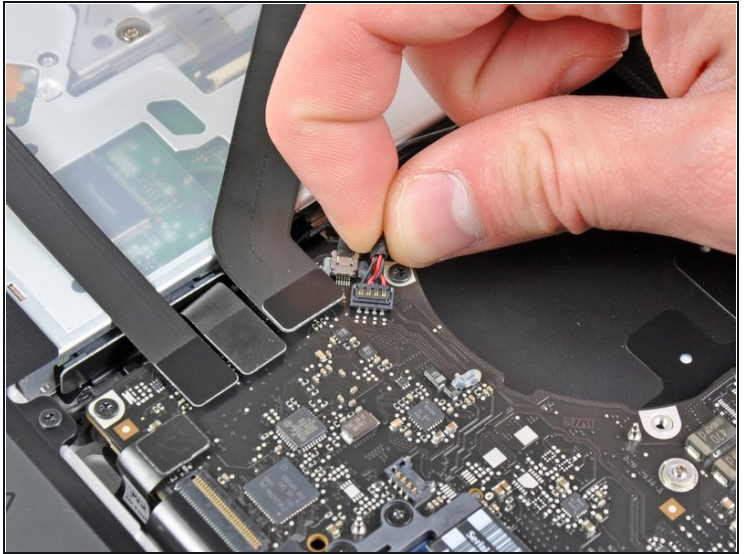
- Remove the following three screws securing the fan to the logic board:
  - One 7.2 mm T6 Torx screw
  - Two 5.3 mm T6 Torx screws

## Step 7



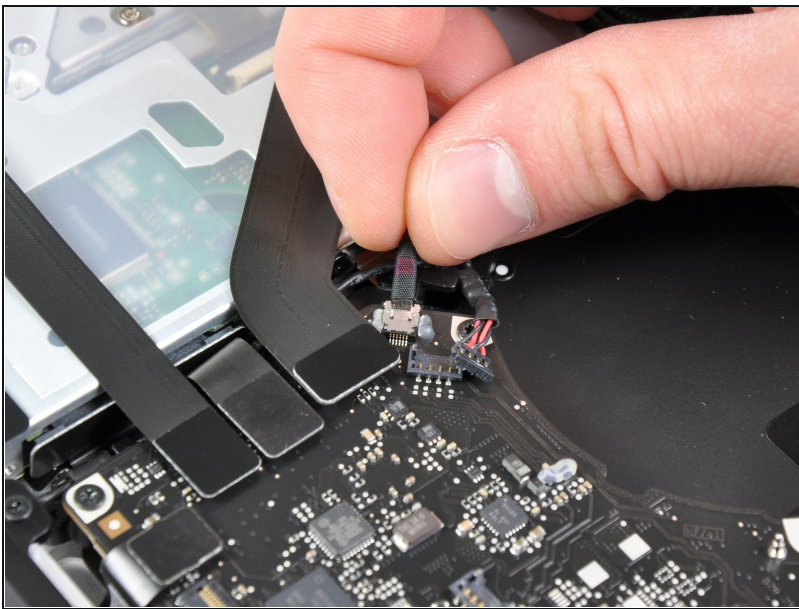
- Lift the fan out of its recess in the logic board, minding its cable that may get caught.

## Step 8 — Logic Board



- Use the tip of a spudger to pull the right speaker/subwoofer cable out from under the retaining finger molded into the upper case.
- Pull the right speaker/subwoofer cable upward to lift the connector out of its socket on the logic board.

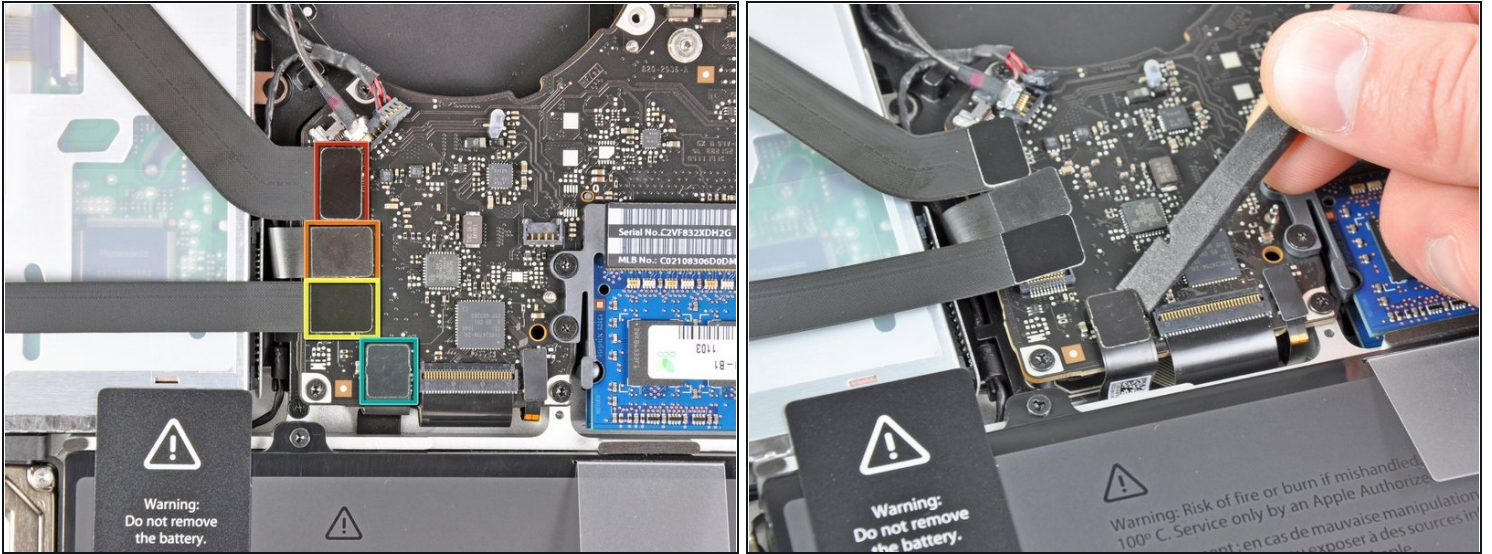
## Step 9



- Disconnect the camera cable from the logic board.
  - ① The camera cable lifts straight away from the logic board. If your cable feels fragile, use a spudger to pry up on the small metal tabs on each side of the connector head to disconnect the cable.



## Step 10



- Disconnect the following four cables:
  - AirPort/Bluetooth cable
  - Optical drive cable
  - Hard drive cable
  - Trackpad cable
- ① To disconnect the cables, use the flat end of a spudger to pry their connectors up from the sockets on the logic board.

## Step 11



- Use your fingernail to flip up the retaining flap on the keyboard ribbon cable ZIF socket.

⚠ Be sure you are prying up on the hinged retaining flap, **not** the socket itself.

- Use the tip of a spudger to pull the keyboard ribbon cable out of its socket.

☑ The cable may be difficult to insert. If you are having trouble, temporarily attach a piece of tape to the cable to help you guide the cable into the socket.

## Step 12



- If present, remove the small strip of black tape covering the keyboard backlight cable socket.



## Step 13

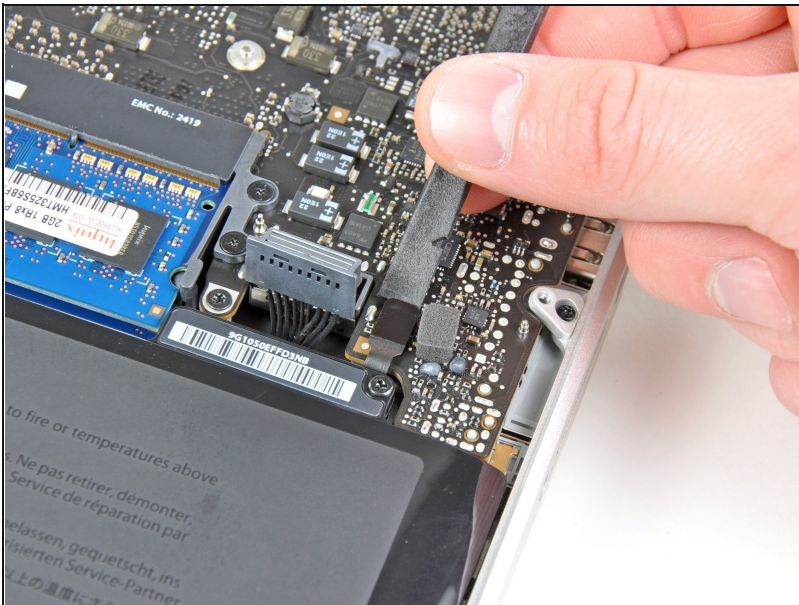


- Use the tip of a spudger or your fingernail to flip up the retaining flap on the keyboard backlight ribbon cable ZIF socket.

⚠ Be sure you are prying up on the hinged retaining flap, **not** the socket itself.

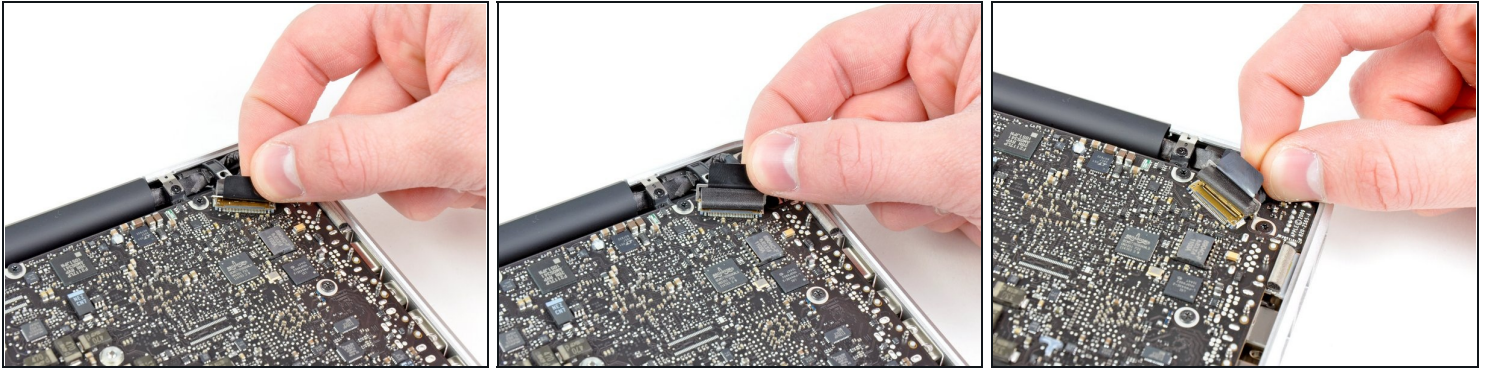
- Pull the keyboard backlight ribbon cable out of its socket.

## Step 14



- Use the flat end of a spudger to pry the sleep sensor/battery indicator connector up from its socket on the logic board.

## Step 15



- Grab the plastic pull tab secured to the display data cable lock and rotate it toward the DC-In side of the computer.
- Pull the display data cable straight out of its socket on the logic board.

⚠ Do not lift up on the display data cable, as its socket is very fragile. Pull the cable parallel to the face of the logic board.

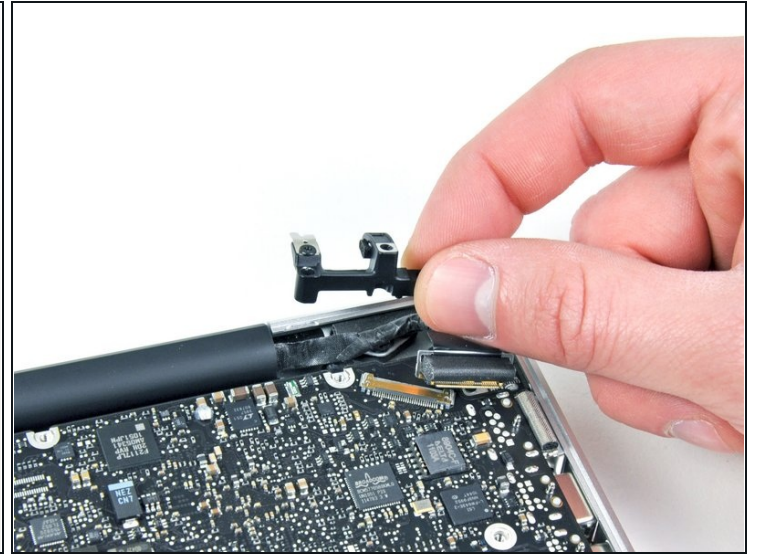
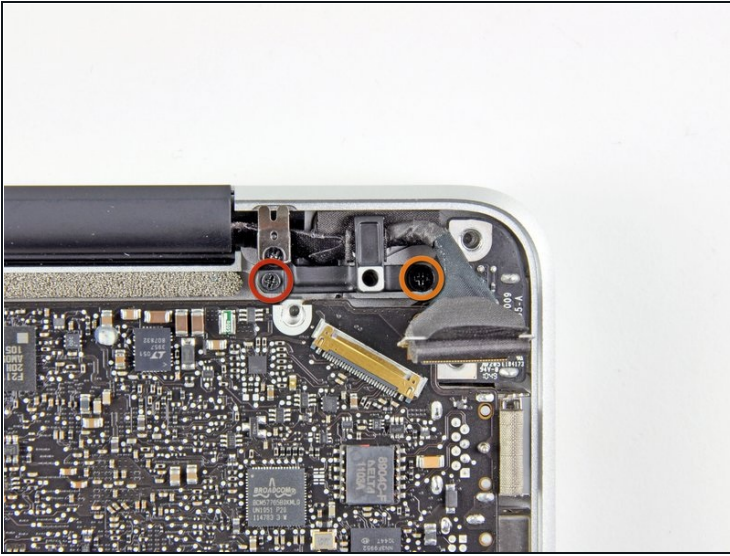
## Step 16



- Remove the following nine screws:
  - Five 3.6 mm T6 Torx screws
  - Two 4.3 mm T6 Torx screws
  - Two 7.2 mm T6 Torx screws
- ⓘ In some models the screws may be slightly shorter as follows:
  - Five 3.0 mm T6 screws
  - Two 3.6 mm T6 screws
  - Two 6.7 mm T6 screws

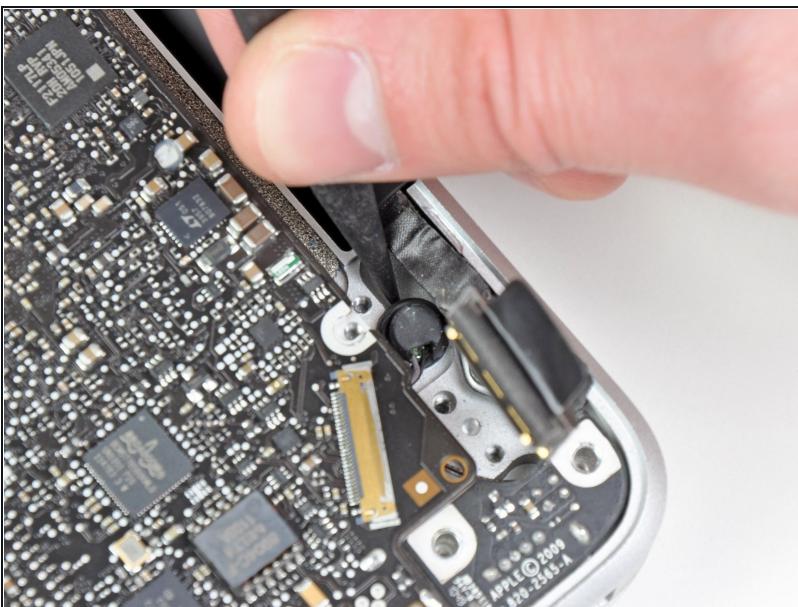


## Step 17



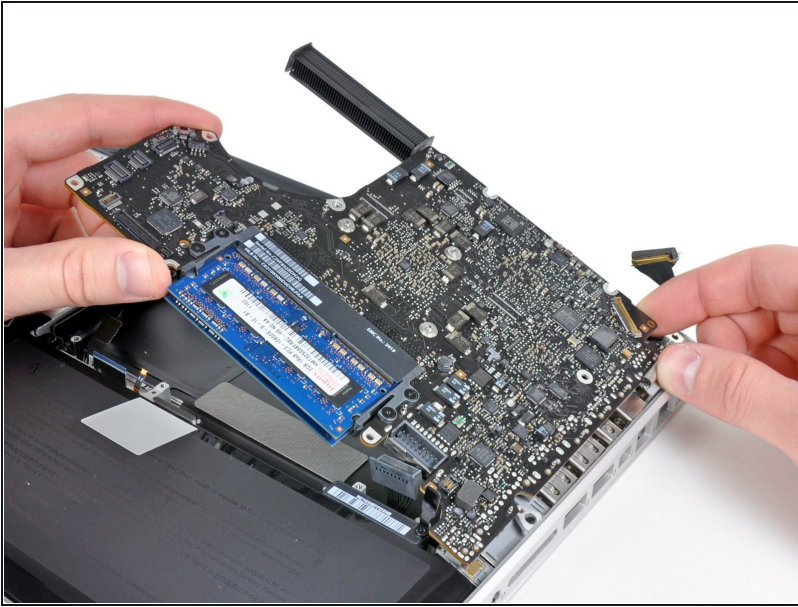
- Remove the following two screws:
  - One 8.6 mm Phillips screw
  - One 5.5 mm Phillips screw
- Remove the display data cable retainer from the upper case.

## Step 18



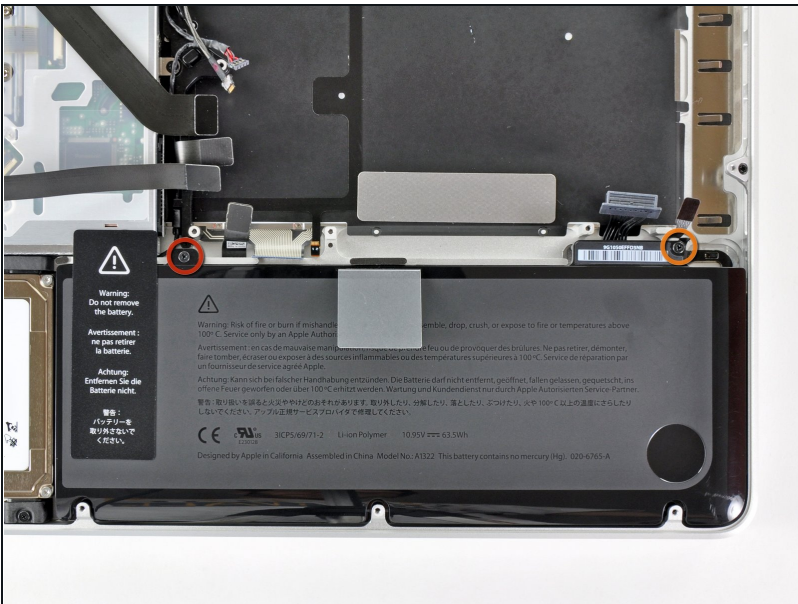
- Use the tip of a spudger to gently peel the microphone off the adhesive securing it to the upper case.

## Step 19



- Minding the many connectors near its edges, lift the logic board from the end nearest the optical drive.
- Without flexing the board, maneuver it out of the upper case, minding the flexible connection to the DC-In board that may get caught in the upper case.
- Remove the logic board.

## Step 20 — Upper Case



- Remove the following two screws:
  - One 5.6 mm Tri-point screw
  - One 13 mm Tri-point screw



## Step 21



- Carefully peel the battery warning label off the upper case between the battery and the optical drive.

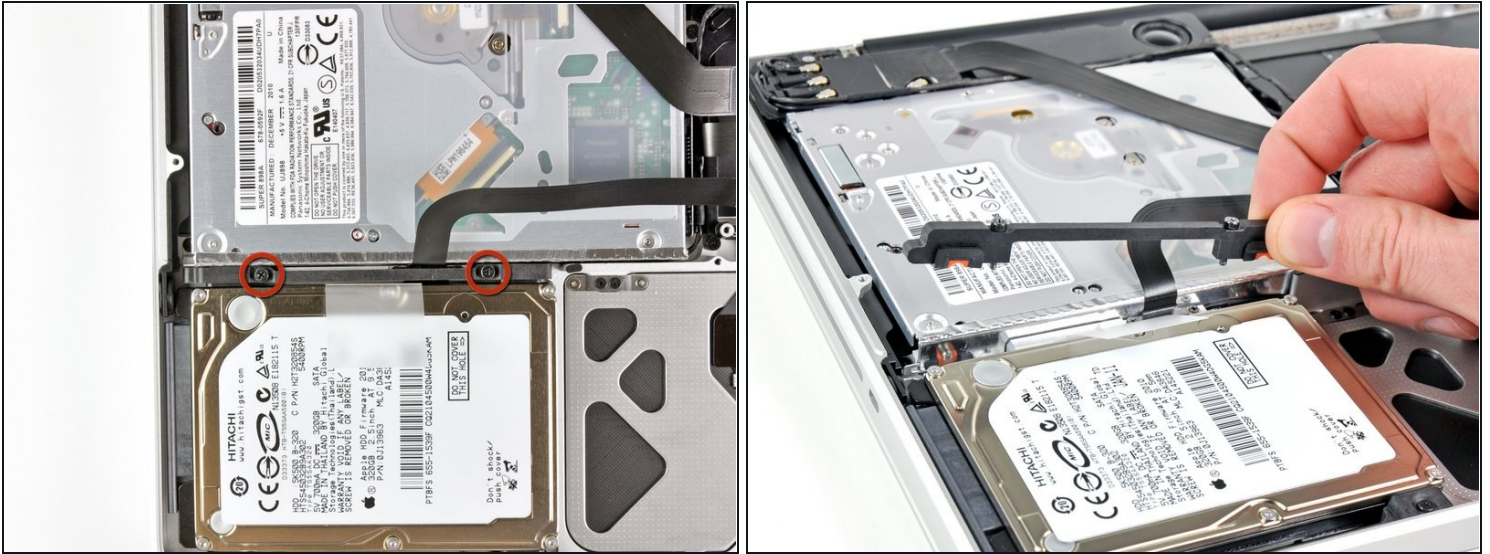
⚠ Do not remove the label from the battery.

## Step 22



- Use the attached plastic pull tab to help remove the battery from the upper case.

## Step 23



- Remove the two Phillips screws securing the hard drive bracket to the upper case.
- ⓘ These screws will remain captive to the hard drive bracket.
- Remove the hard drive bracket.
- ☑ The hard drive bracket may be firmly seated against the upper case.

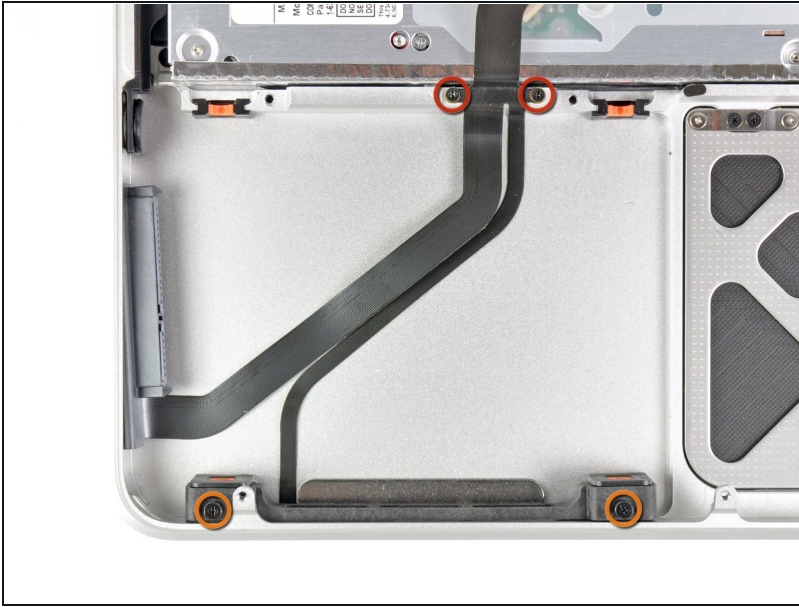
## Step 24



- Use the attached pull tab to lift the hard drive out of the upper case.
- Pull the hard drive cable away from the body of the hard drive.
- Remove the hard drive.



## Step 25



- Remove the following four screws:
  - Two 3 mm Phillips screws
  - Two 9.7 mm Phillips screws

## Step 26



- Carefully peel up the thin IR sensor/sleep LED ribbon cable from the adhesive securing it to the upper case.

## Step 27



- Pull the front hard drive bracket containing the IR sensor/sleep LED away from the front edge of the upper case.
- Remove the hard drive cable.

## Step 28



- Carefully move the AirPort/Bluetooth ribbon cable out of the way as you peel the camera cable off the adhesive securing it to the subwoofer and the AirPort/Bluetooth bracket.
- De-route the camera cable out from under the retaining finger molded into the AirPort/Bluetooth bracket.



## Step 29



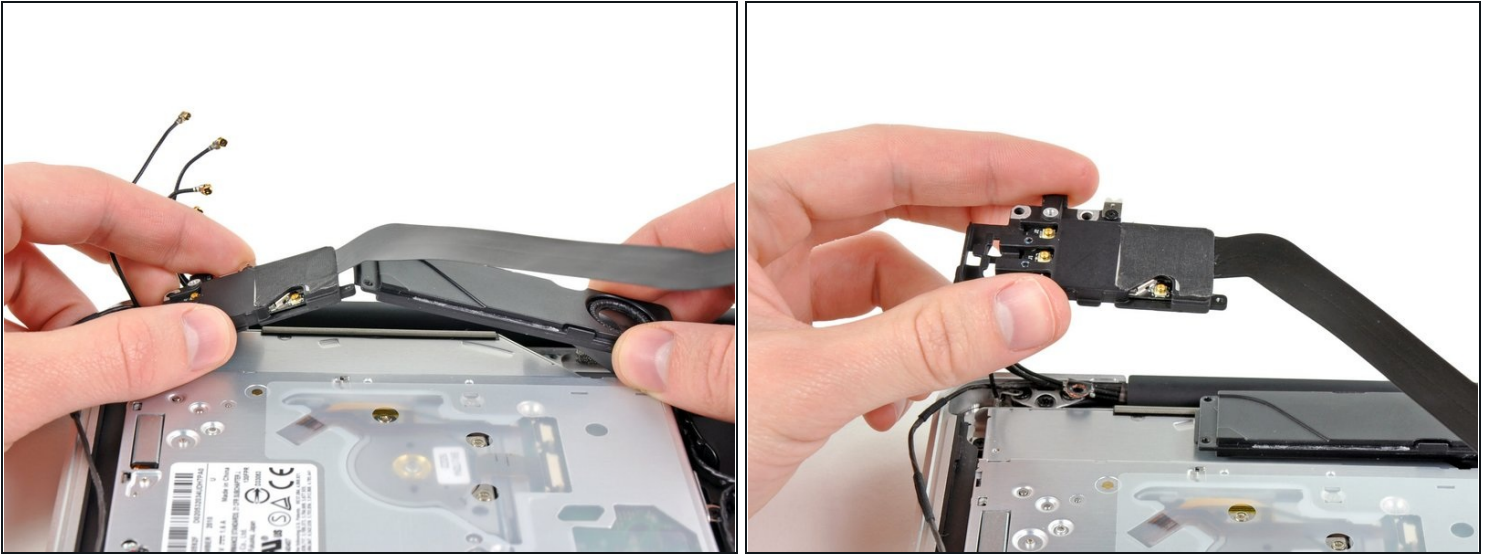
- Disconnect the four antenna connectors boxed in red in the first picture.
- To do so, use the tip of a spudger to pry their connectors up from the sockets on the AirPort/Bluetooth board.
- De-route each of the cables from their channels in the AirPort/Bluetooth bracket.

## Step 30



- Remove the following five screws:
  - Two 10.3 mm Phillips screws
  - Two 3.1 mm Phillips screws
  - One 5 mm Phillips screw

## Step 31



- Pull the AirPort/Bluetooth assembly and the Subwoofer upward near the center of the side of the optical drive until they clear each other.
- Remove the AirPort/Bluetooth board assembly.

## Step 32



- Remove the three 2.7 mm Phillips screws securing the optical drive to the upper case.

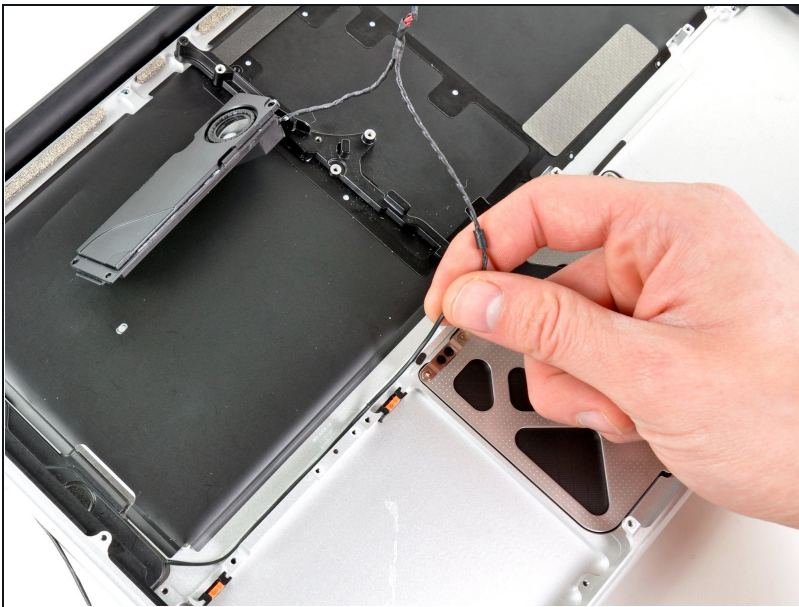


## Step 33



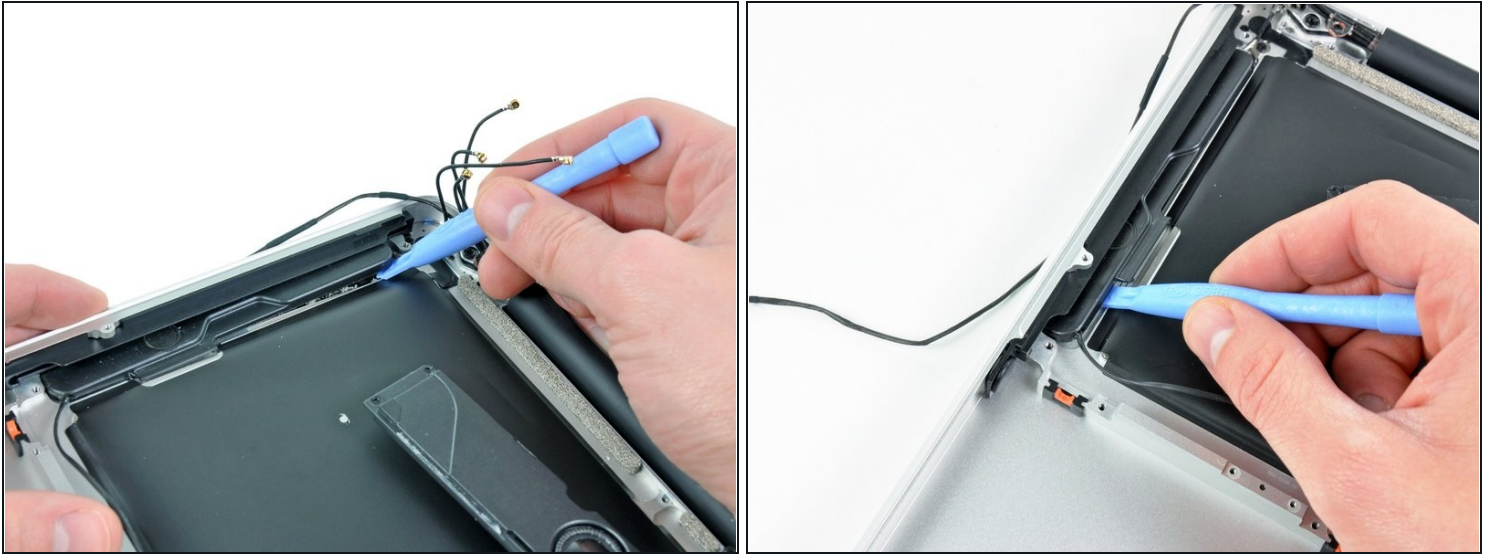
- Lift the optical drive from the edge nearest the display and remove it from the upper case.

## Step 34



- Peel the right speaker cable off the upper case.

## Step 35



- Use a plastic opening tool or another thin prying object to carefully pry the right speaker up from the adhesive securing it to the upper case.

**⚠ Start prying up from the edge of the right speaker nearest the display. Starting from the other side may damage one of the antennas.**

- Pry up along the edge of the right speaker until it is separated from the upper case.

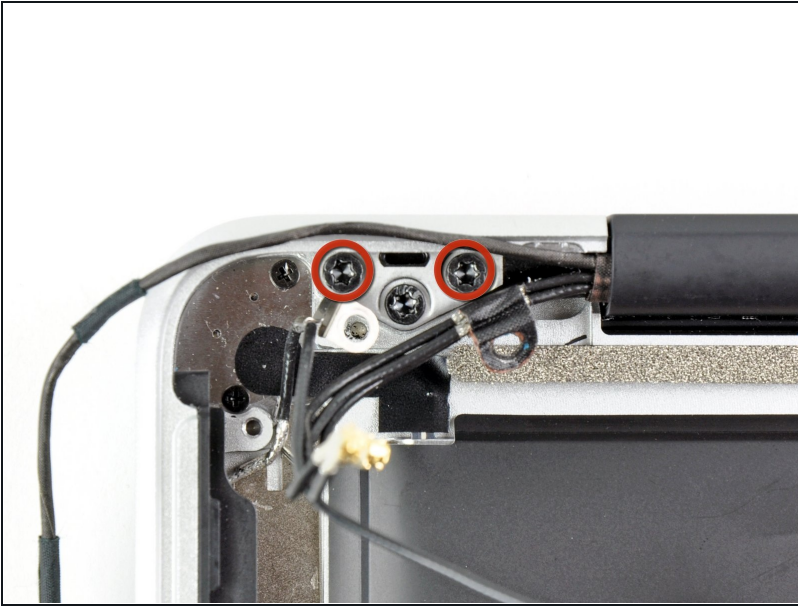
## Step 36



- Pull the right speaker out from under the optical drive opening.



## Step 37



- Remove two of the three 6 mm T8 Torx screws securing the right side of the display to the upper case.
- ⓘ We purposely have you leave one screw attaching the display to the upper case to aid in future steps.

## Step 38



- Remove the small piece of foam tape covering the left display hinge screws.

## Step 39



- Remove two of the three 6 mm T8 Torx screws securing the left side of the display to the upper case.
- ⓘ We purposely have you leave one screw attaching the display to the upper case to aid in future steps.

## Step 40



- Open your MacBook Pro so the display is perpendicular to the upper case.
- Place your opened MacBook Pro on a table as pictured.
- While holding the display and upper case together with your left hand, remove the remaining T8 Torx screw from the lower display bracket.



## Step 41



⚠ Be sure to hold the display and upper case together with your left hand. Failure to do so may cause the freed display/upper case to fall, potentially damaging each component.

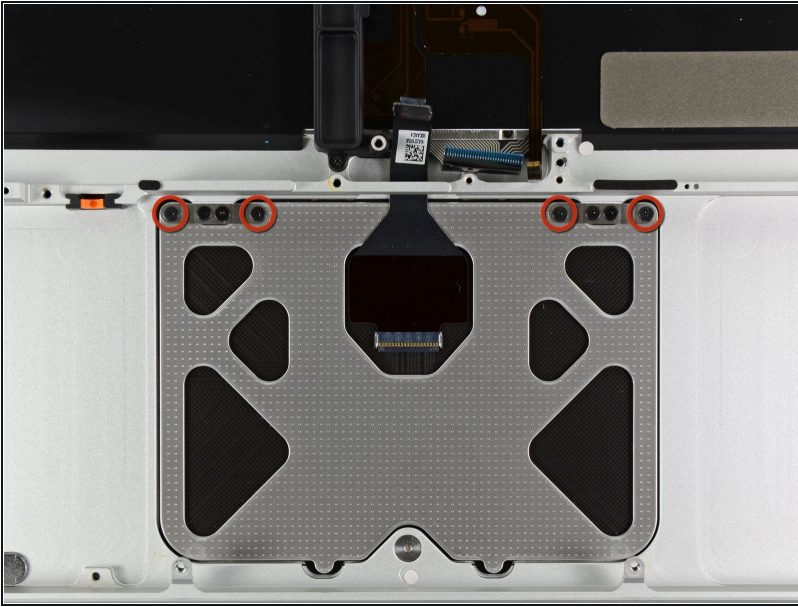
- Remove the last remaining T8 Torx screw securing the display to the upper case.

## Step 42



- Grab the upper case with your right hand and rotate it slightly toward the top of the display so the upper display bracket clears the edge of the upper case.
- Rotate the display slightly away from the upper case.
- Lift the display up and away from the upper case, minding any brackets or cables that may get caught.
- Upper case remains.

## Step 43 — Upper Case



- Remove the four 1.2 mm Phillips screws highlighted in red.

## Step 44



- Carefully dislodge the edge of the trackpad closest to the keyboard from its recess in the upper case by pushing it away from the brackets attached to the upper case.
- De-route the trackpad cable through its slot cut into the upper case.



## Step 45



- Pull the trackpad away from the outer edge of the upper case.
- Remove the trackpad and set it aside.

## Step 46



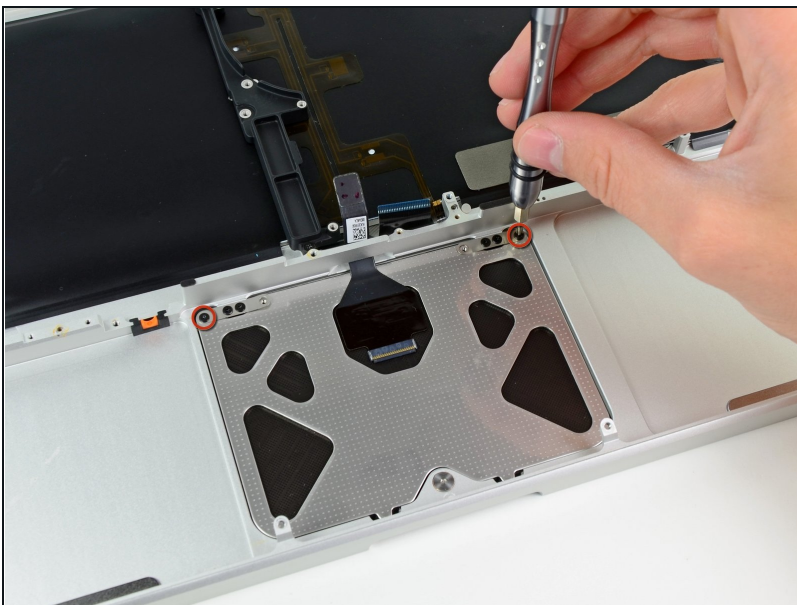
- ① In the following steps, you will be working on your new upper case.
  - Use a T6 Torx screwdriver to loosely install the 1.1 mm set screw included with your new upper case into its tapped hole near the middle of the trackpad opening on your new upper case.
- ⚠ Only tighten it about one turn for now.

## Step 47



- Carefully insert the cable from your old trackpad through its slot cut into your new upper case.
- Use one hand to hold the trackpad cable in place as you insert the two retaining tabs on the outer edge of the trackpad under the lip on the upper case.
- Pull the trackpad cable as you seat the trackpad into its void in your new upper case.

## Step 48



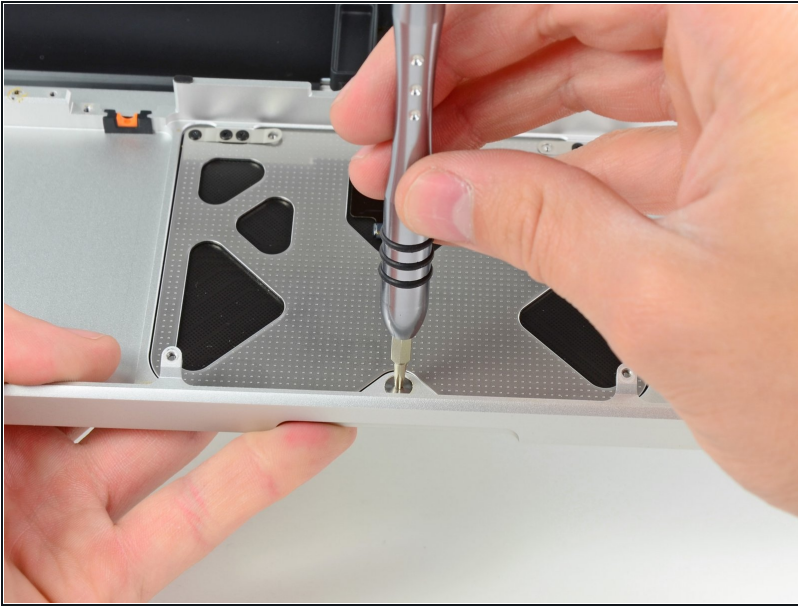
- Insert a 1.2 mm Phillips screw into each of the outer holes drilled into the trackpad (two screws total).

**⚠ You'll install the rest in a bit.**

- ① Tighten the screws, then back them out about a quarter turn to aid in aligning your trackpad during the next few steps.



## Step 49



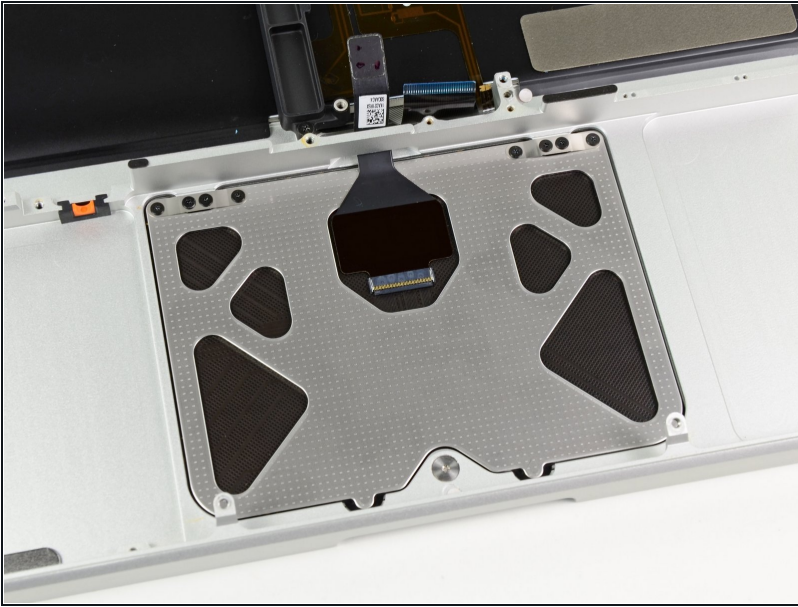
- While continually trying to click your trackpad, gently tighten the T6 Torx set screw until the clicks return to their factory "feel."
- ① You can tell when the screw is tightened just right by the noise it makes when the trackpad clicks. If the set screw is too loose, the trackpad will have excessive play before it clicks. If it is too tight, the trackpad will click too easily and won't make the characteristic loud mouse clicking noise.

## Step 50



- Next, flip your upper case over so the keyboard side is facing up.
- Align the trackpad so it is centered in its hole cut into the upper case.

## Step 51



- Tighten the outer two screws along the inner edge of the trackpad and check the alignment of it on the outer side of the upper case.
- If its alignment looks good, install the rest of the Phillips screws along the inner edge of the trackpad.
- Before reassembling your machine, verify that the set screw is still installed in a position so the mouse will click correctly.

---

To reassemble your device, follow these instructions in reverse order.