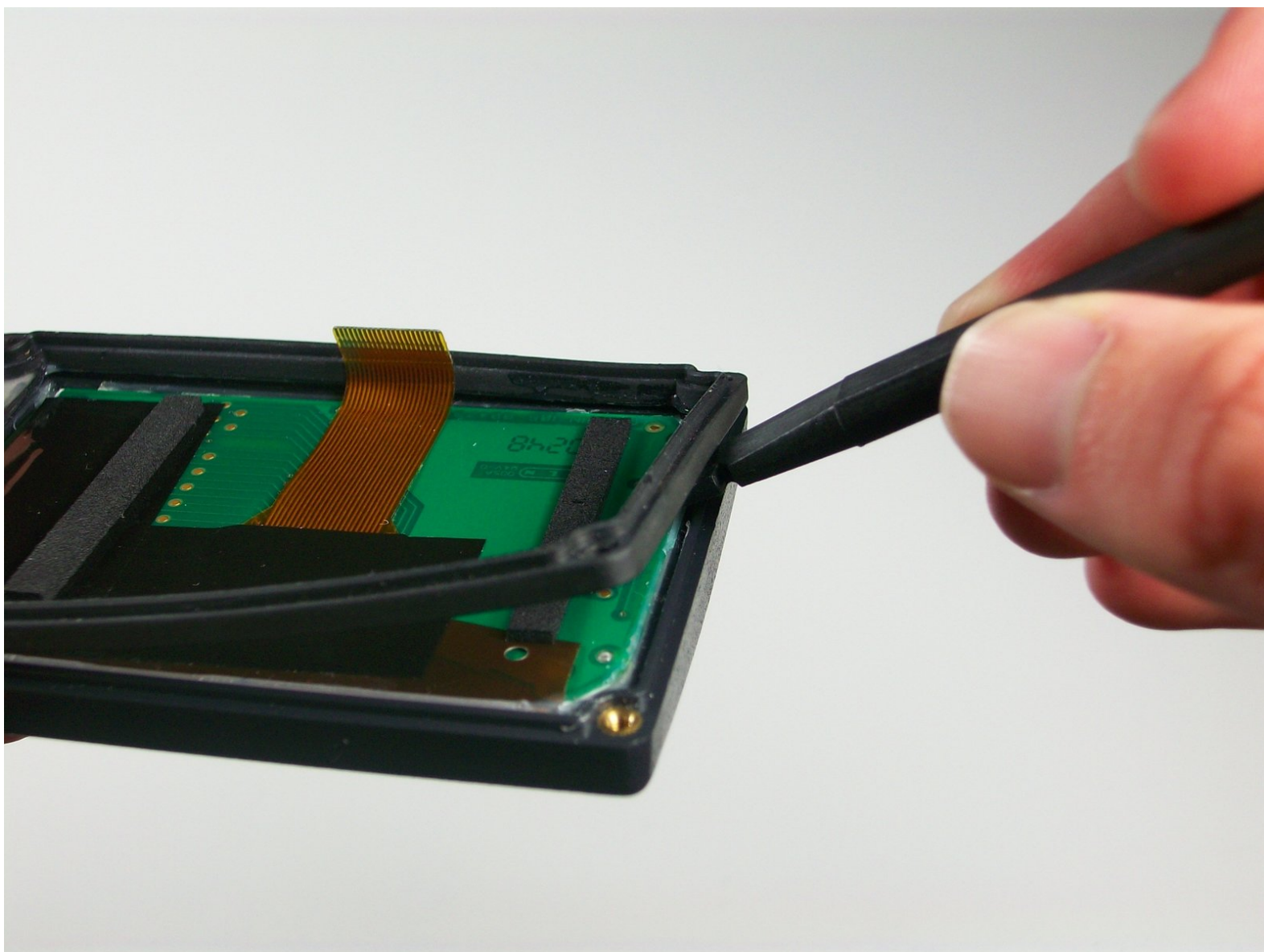




Garmin GPS V Button Pad Replacement

This guide explains how to replace a damaged or worn button pad in your Garmin GPS V.

Written By: Connor



INTRODUCTION

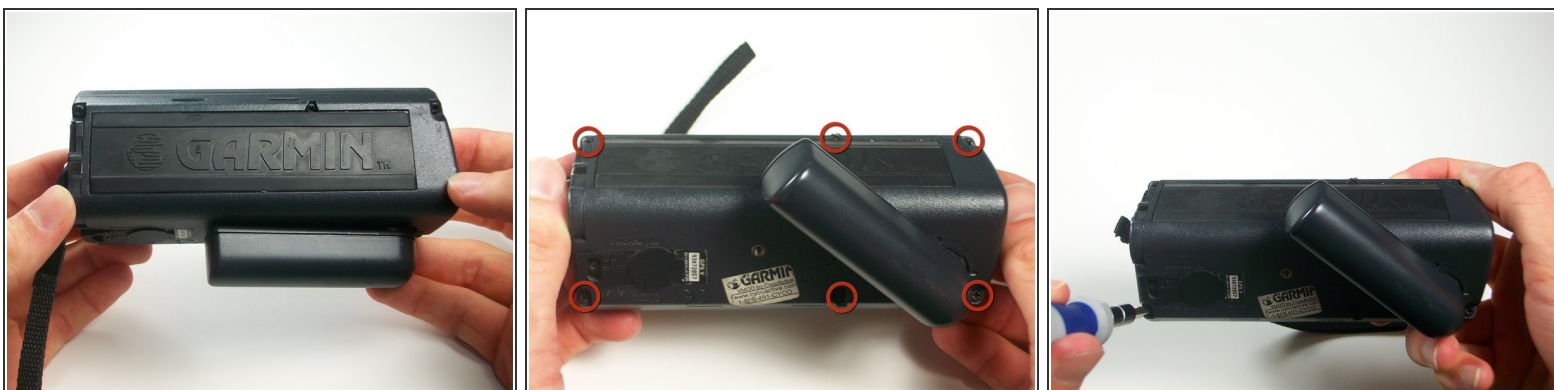
One of the main reasons we would replace a button pad is if the functions are not working properly or at all. The functions could be getting stuck if that is the case then the button pad will need to be replaced. Some of the tools needed to replace the button pad are a Phillips screwdriver, soldering iron, soldering wire, and a pair of tweezers. Some soldering skills will be needed to perform this repair.



TOOLS:

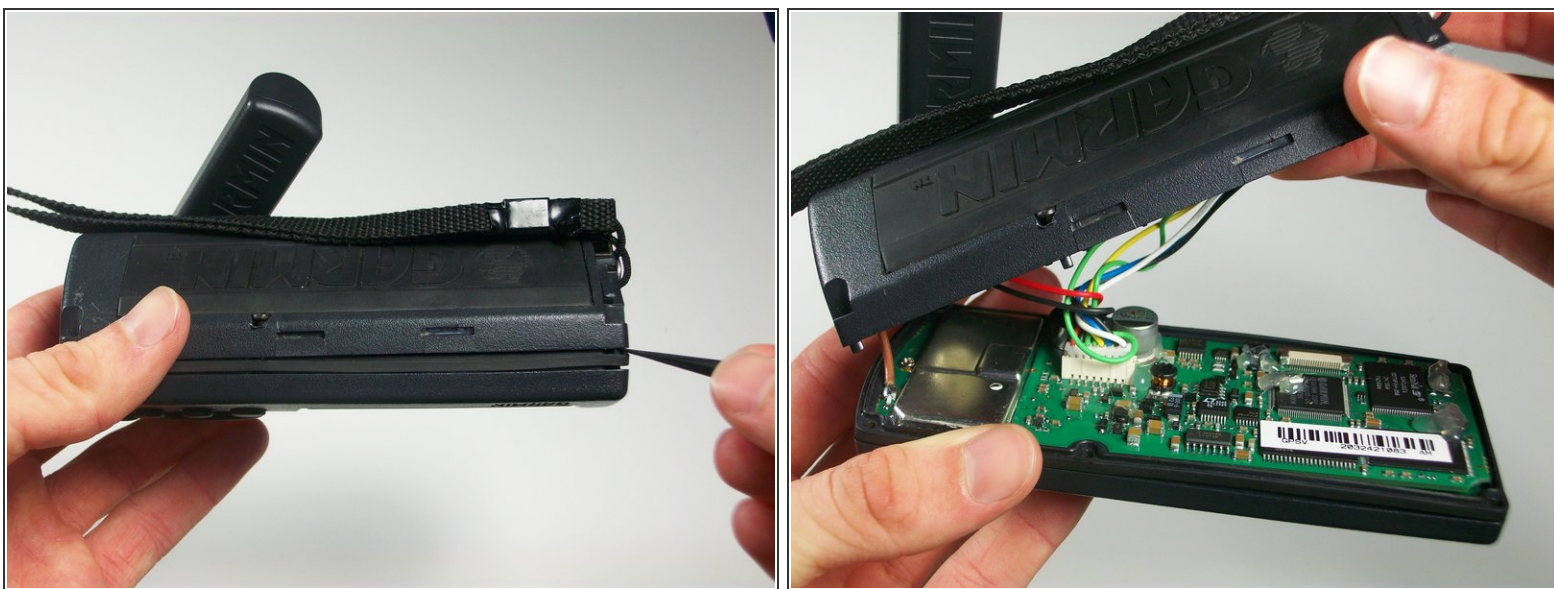
- [Phillips #0 Screwdriver](#) (1)
 - [Phillips #1 Screwdriver](#) (1)
 - [Soldering Workstation](#) (1)
 - [Spudger](#) (1)
-

Step 1 — Logic Board



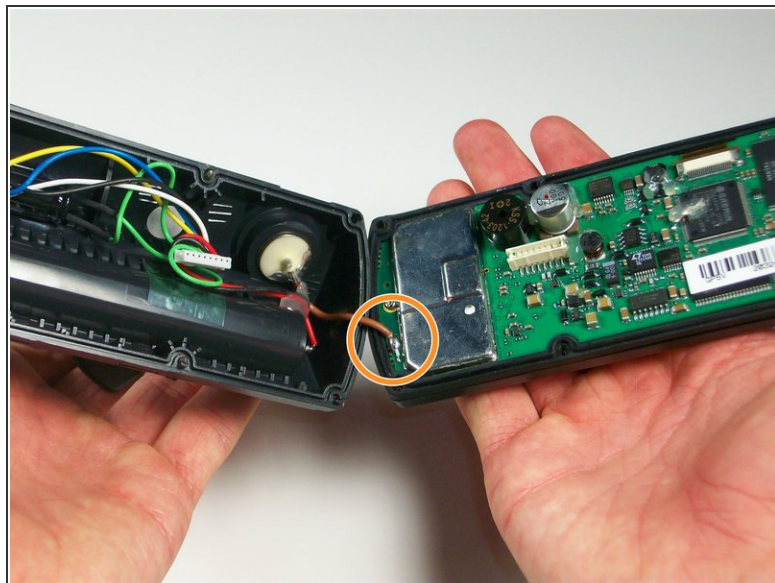
- Orient the GPS V backside up.
- With a #0 Philips screwdriver, remove six M2x0.4 black screws on the back of the unit.

Step 2



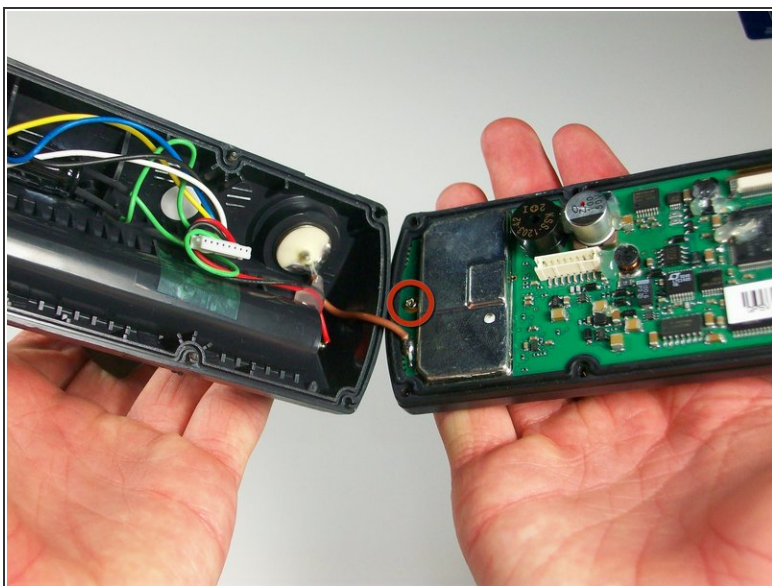
- With the spudger, gently pry the back plate off the unit starting at the corners.
- Open the back plate about 35°, use the antenna side act like a hinge.
- ⚠ Do **NOT** remove the back plate all the way, there are cables connected to it.

Step 3



- Locate the white 8-pin connector on the logic board and disconnect it.
- Open the device all the way, making sure to not disconnect the brown antenna wire.

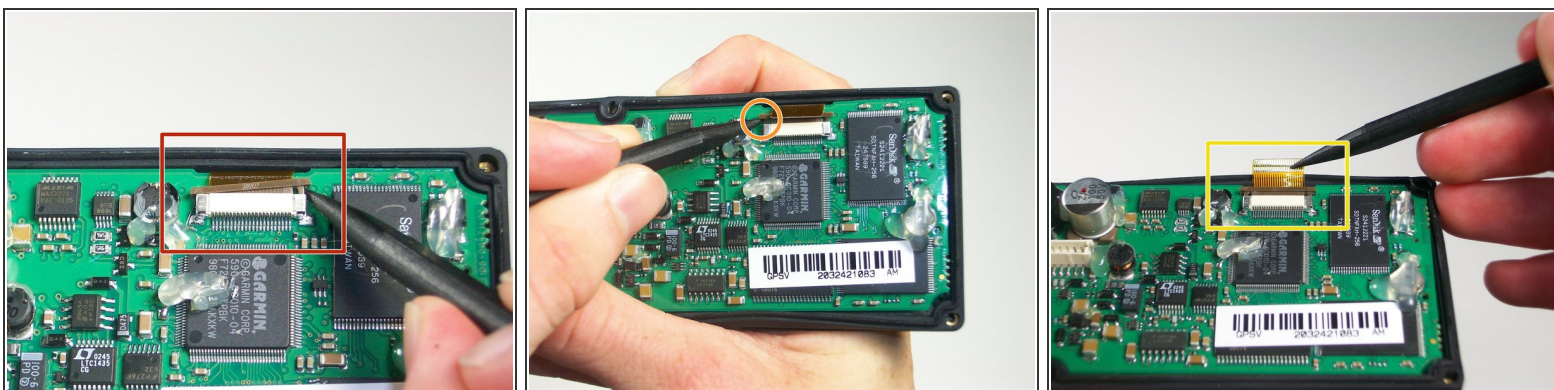
Step 4



- With a #1 Philips screwdriver, remove the silver M2x0.4 screw on the logic board near the brown wire.
- ⓘ You may need to rotate the device to get better access to the screw.

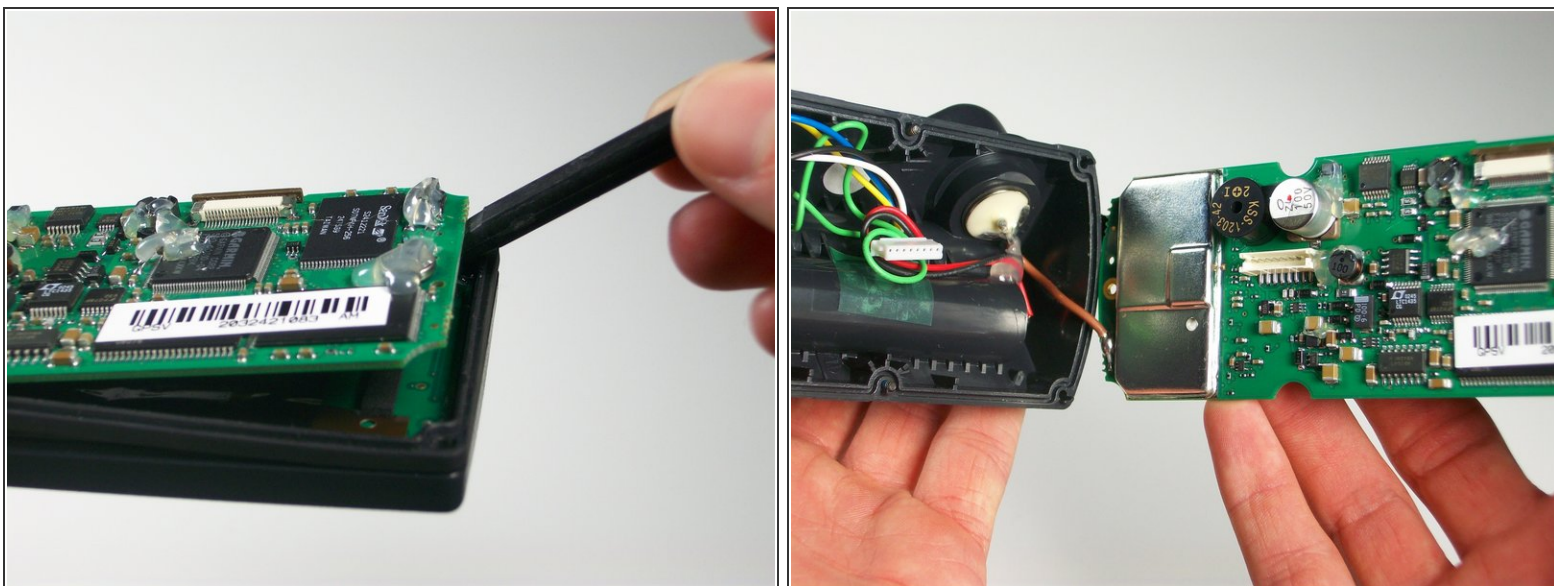
This document was generated on 2021-05-01 12:16:24 AM (MST).

Step 5



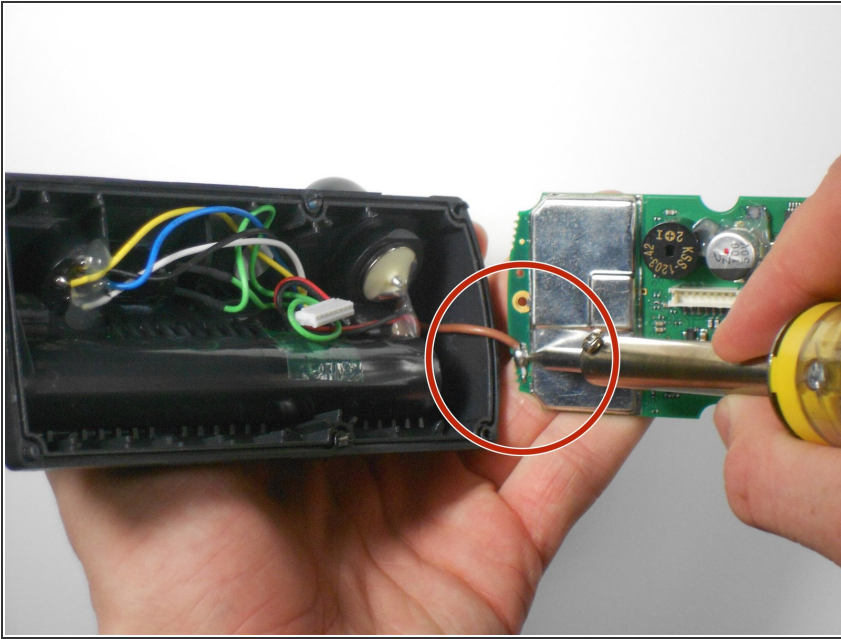
- Locate the ribbon connector on the logic board.
- With the spudger, gently apply pressure to both sides of the brown connector lock until it pushes out.
- With the spudger, gently work the ribbon cable out of the connector until it is free.

Step 6



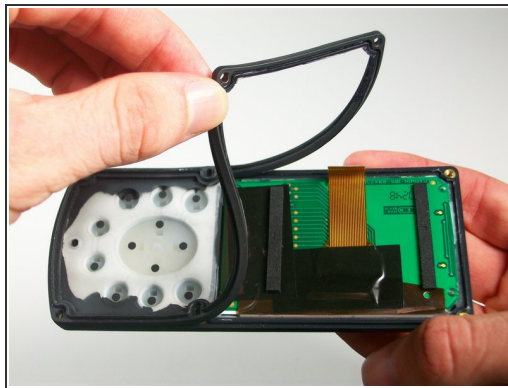
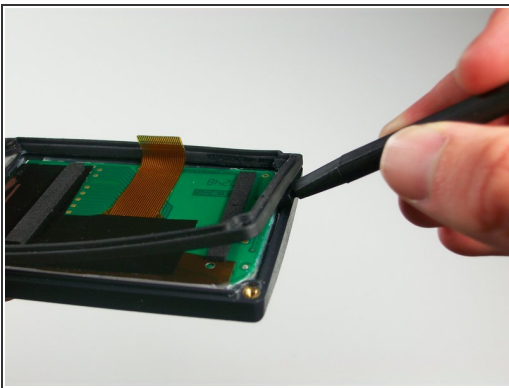
- With the spudger, gently pry out the logic board.
- ⚠ Be careful to not disconnect the brown antenna wire as you remove the logic board.

Step 7



- Locate the brown wire connection on the logic board.
- Carefully apply heat with the soldering iron while gently pulling on the brown wire.
- ⓘ It may take some time to heat the flux up before the wire can be pulled out.
- Pull brown wire free of the logic board.

Step 8 — Button Pad



- Gently pry the button pad off of the front plate.

To reassemble your device, follow these instructions in reverse order.