



## SmartNav 4 false contact repair

Use this guide if the module behaves...

Written By: Stefano Ficacci



# INTRODUCTION

Use this guide if the module behaves incorrectly or if the device does not mount properly.

## TOOLS:

Flathead 3/32" or 2.5 mm Screwdriver (1)

5/64" Allen Wrench (1)

## Step 1 — Device dissassembly



- Gently open the four tabs with a small flathead screwdriver.

 Carefully remove the black and silver cover.

## Step 2



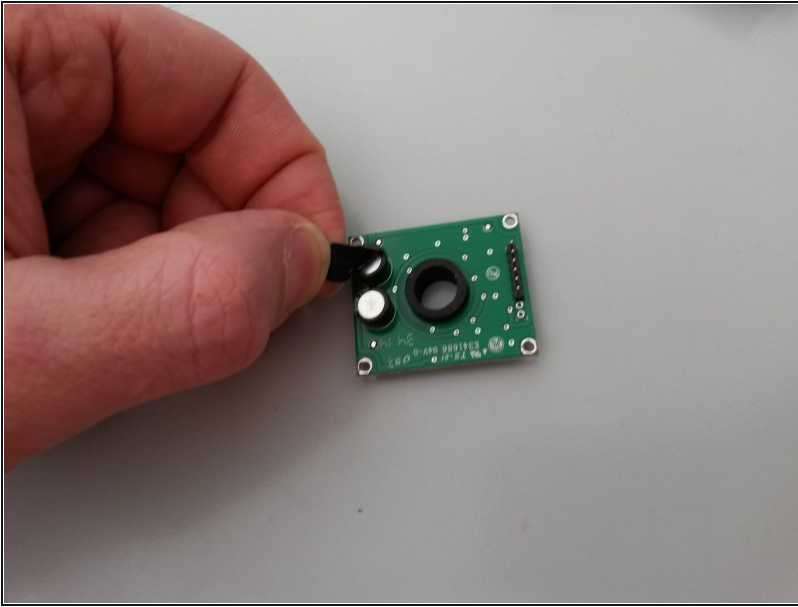
- After detaching the two parts.
- Unscrew the four hex screws with the 2mm hex key.

## Step 3



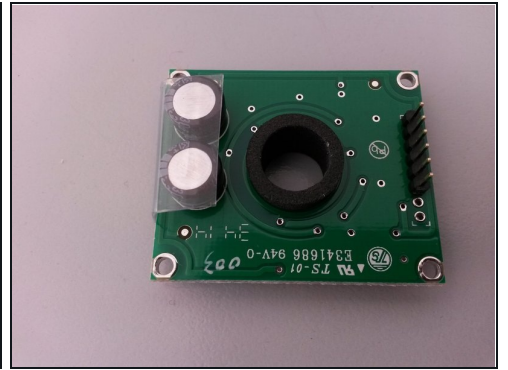
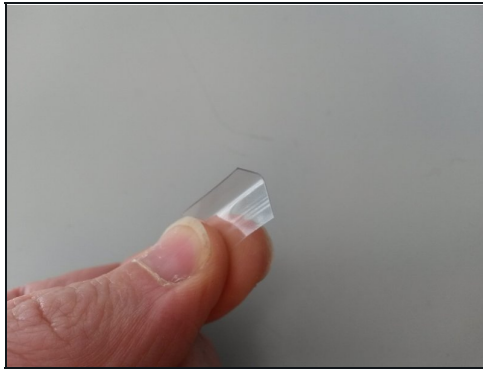
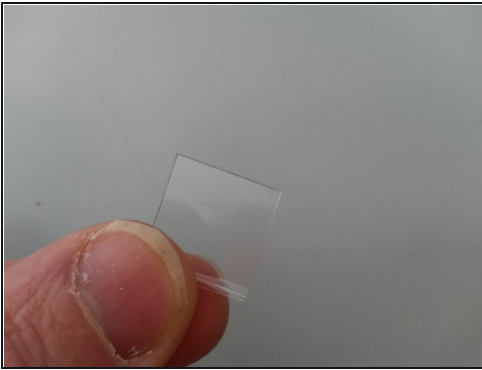
- Remove and separate the components
- ⓘ The problem is caused by the black insulating film between the two boards which appears to be pierced through.

## Step 4



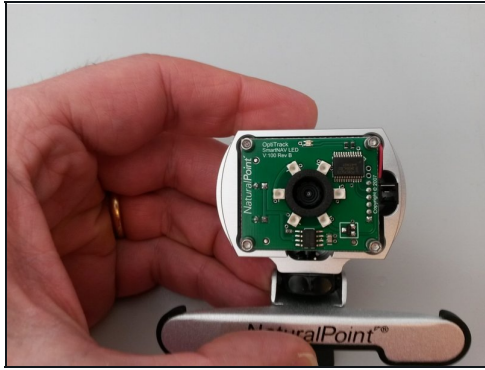
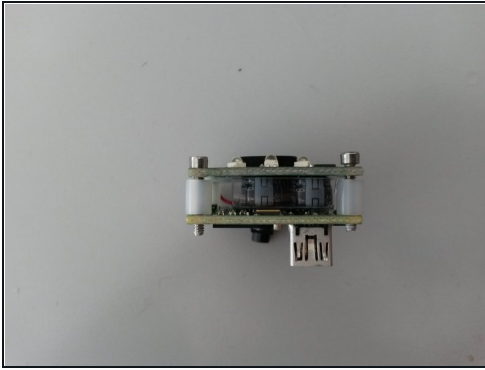
- Remove the insulator, if present.

## Step 5



- Prepare new divider. I used a 0.4mm rigid piece of plastic.
  - ① You can use a rigid piece of plastic, very thin (e.g. 0.4mm)
- Take measurements and fit it.

## Step 6



- Remake the device. Following the guide in reverse.

---

To re-assemble your device, follow the steps in reverse order.