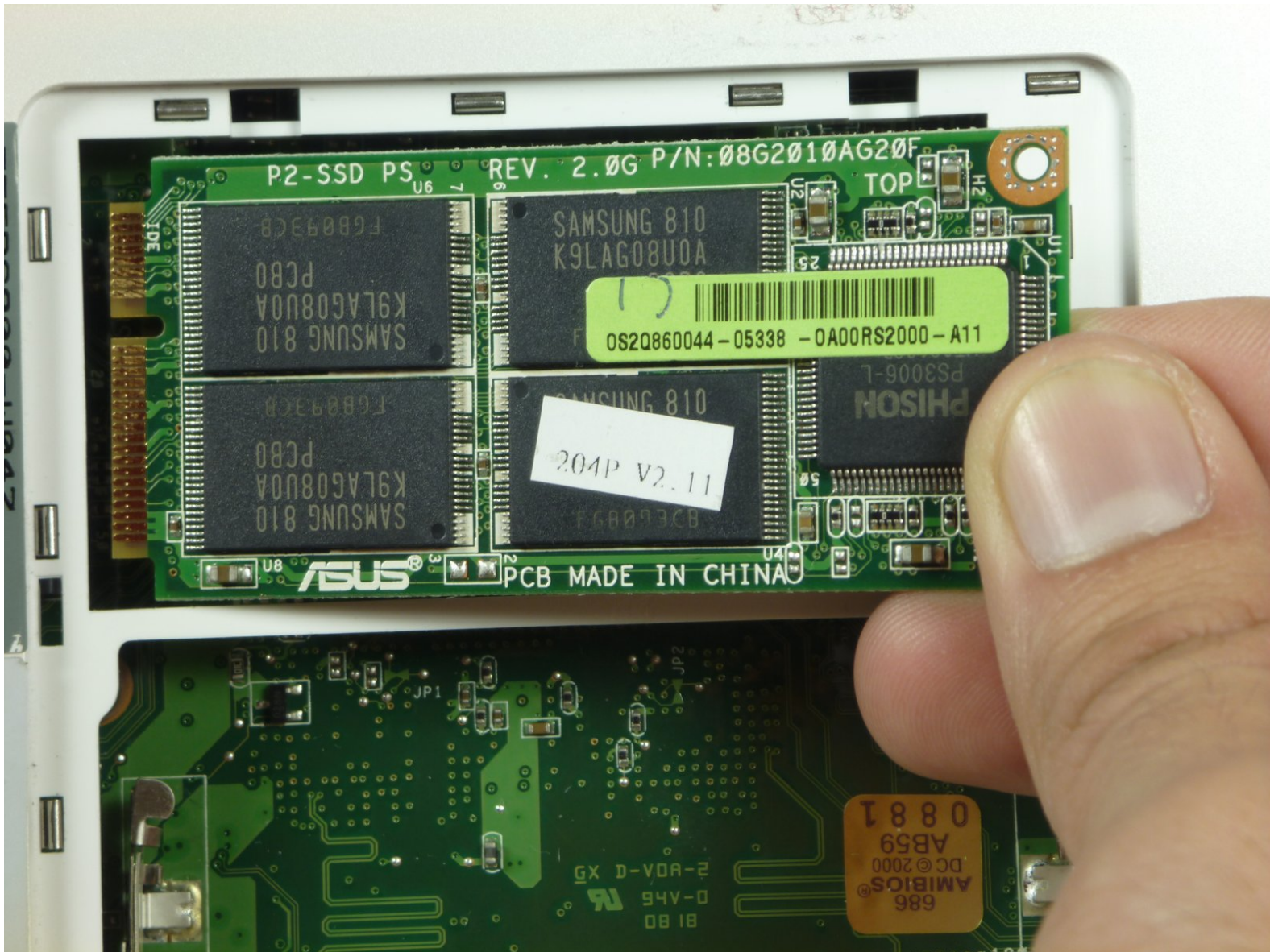




Asus Eee PC 900 SSD Replacement

The Asus Eee PC 900 uses a small solid state...

Written By: Brian Carreon



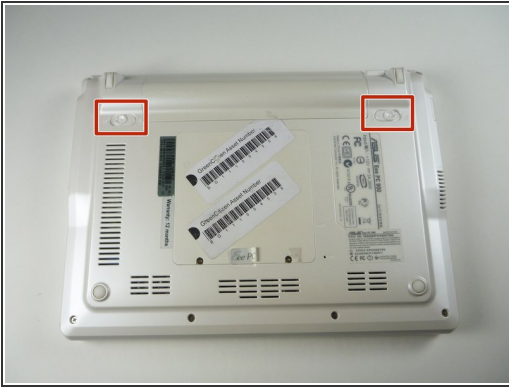
INTRODUCTION

The Asus Eee PC 900 uses a small solid state drive instead of a larger hard drive. Use this guide to replace the SSD in the Asus Eee PC 900.

TOOLS:

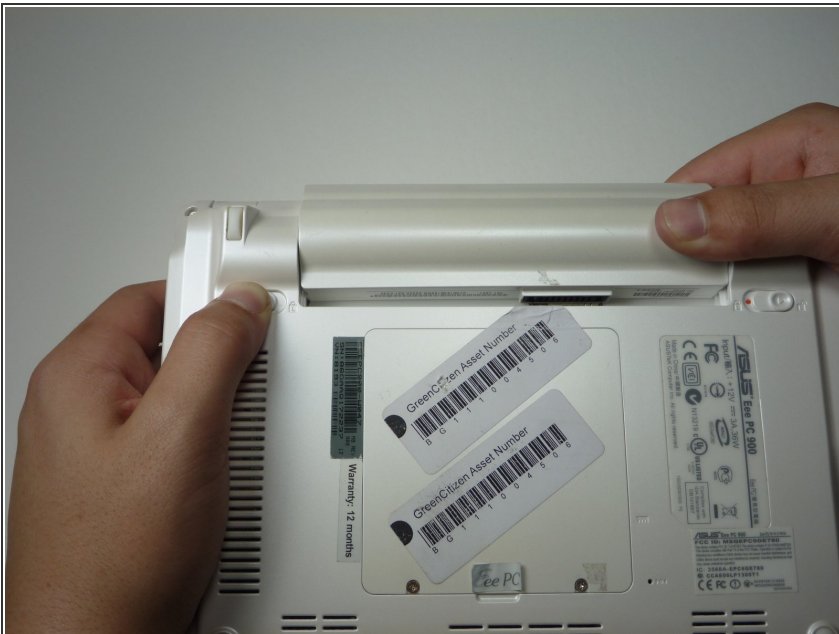
- [Phillips #0 Screwdriver](#) (1)
 - [Tweezers](#) (1)
 - [iFixit Opening Tool](#) (1)
-

Step 1 — Battery



- Slide the battery's locking tabs from the locked position to unlocked positions.
- ⓘ The right tab is unlocked when a red dot is showing.
- ⓘ The left tab will have to be held in the unlocked position in order to release the battery.

Step 2



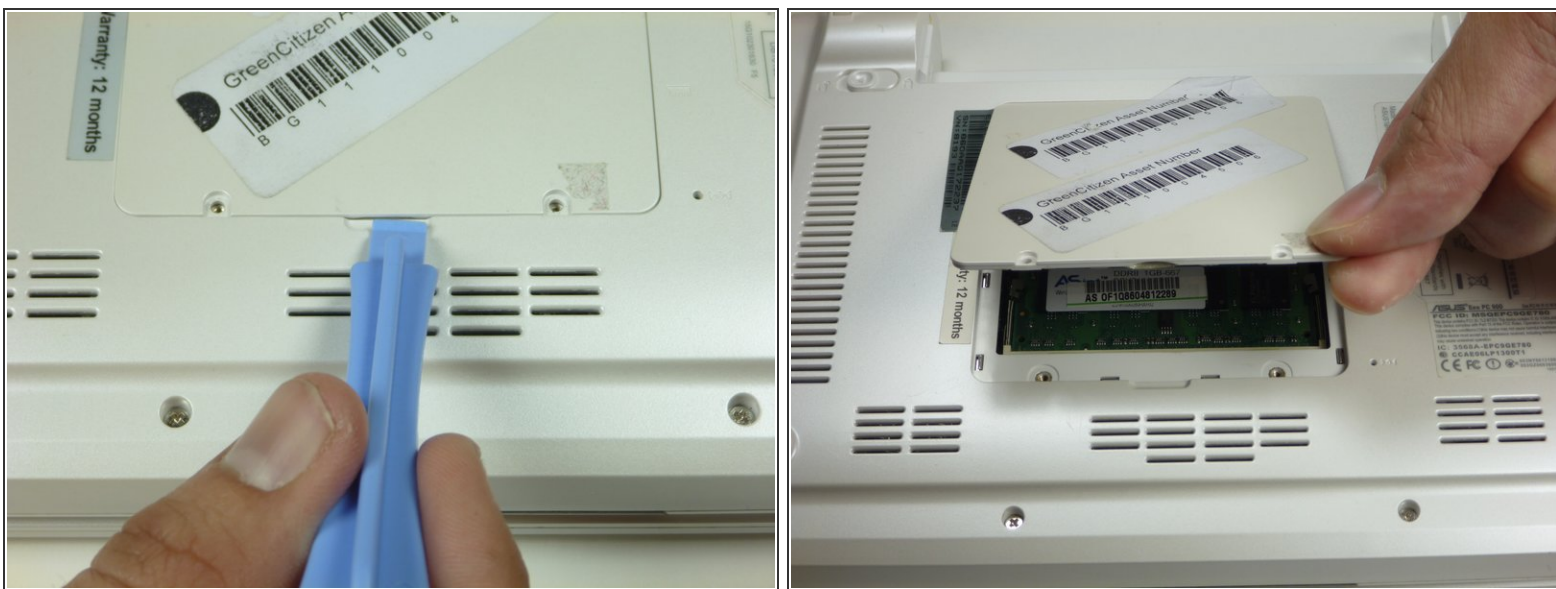
- Slide the battery out while holding the left locking tab in the unlocked position.

Step 3 — SSD



- Remove the small sticker on the right side of the SSD/RAM compartment cover.
- Remove the two 4.76 mm Phillips #0 screws securing the SSD/RAM compartment cover.

Step 4



- Using a plastic opening tool, lift up the bottom of the SSD/RAM compartment cover.
- Lift the cover away from the laptop.

Step 5



- Remove the two 4.76 mm Phillips #0 screws that secure the SSD.
 - ❗ When the screws are removed, one end of the SSD should pop up.
- Slide the SSD out of its socket and lift it out of the compartment.

To reassemble your device, follow these instructions in reverse order.