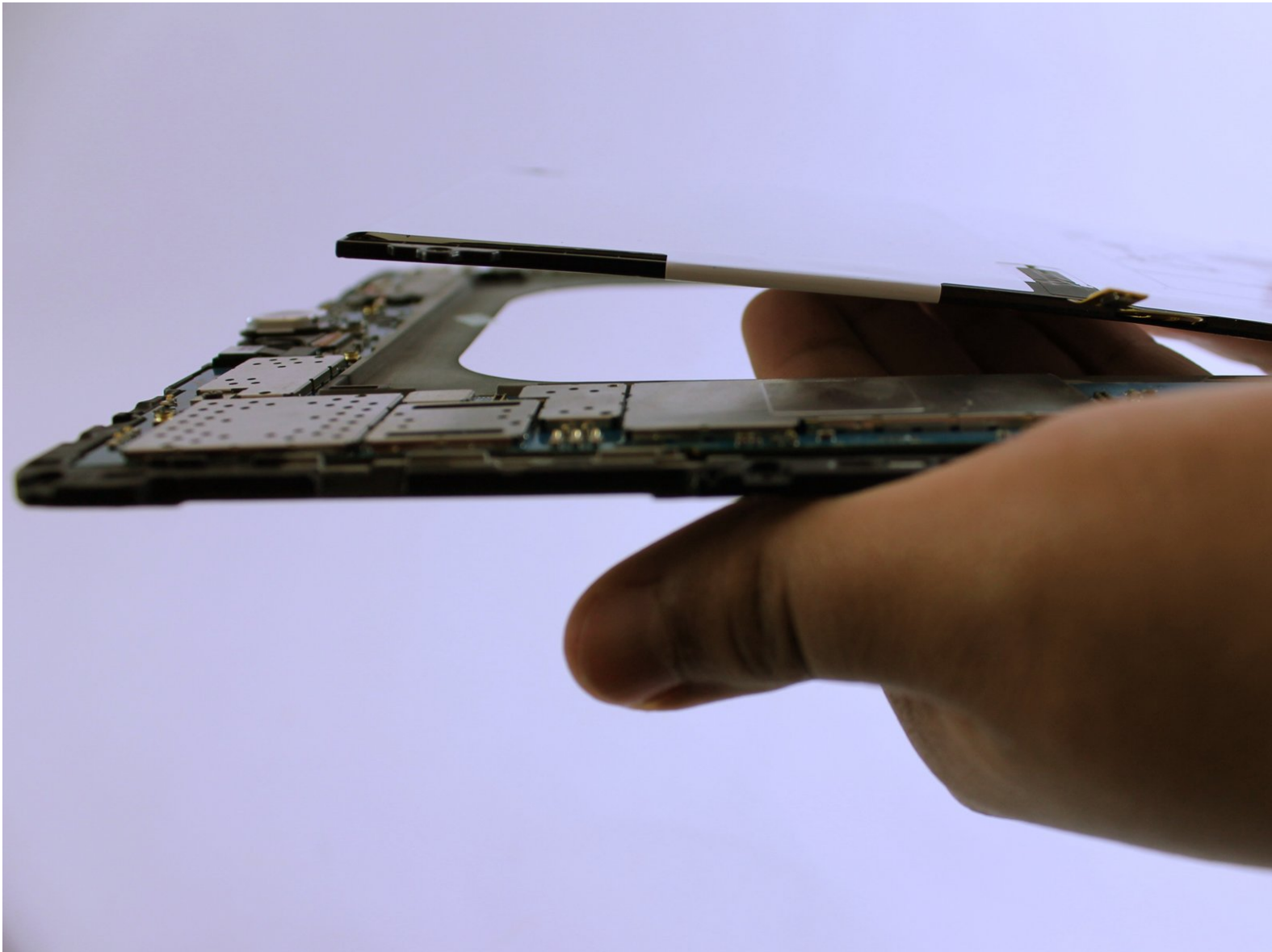




Samsung Galaxy Tab S2 9.7 Verizon Tablet Battery Replacement

Use this guide to replace the battery on a Samsung Galaxy Tab S2 9.7 Verizon Tablet

Written By: Divya Prabakaran



INTRODUCTION

Is your tablet dying quickly or not charging at all? Your battery may need to be replaced. Follow this guide and you'll know exactly how to do it!



TOOLS:

- [Precision Tweezers Set](#) (1)
- [iOpener](#) (1)
- [Suction Handle](#) (1)
- [Metal Spudger Set](#) (1)
- [Phillips #000 Screwdriver](#) (1)




PARTS:

- [Galaxy Tab S2 9.7 Replacement Battery](#) (1)

Step 1 — Back Case



 Turn off the tablet before disassembly.

- Heat up an iOpener for 30 seconds and place on all four seams of the screen. A heat gun can be used as well.

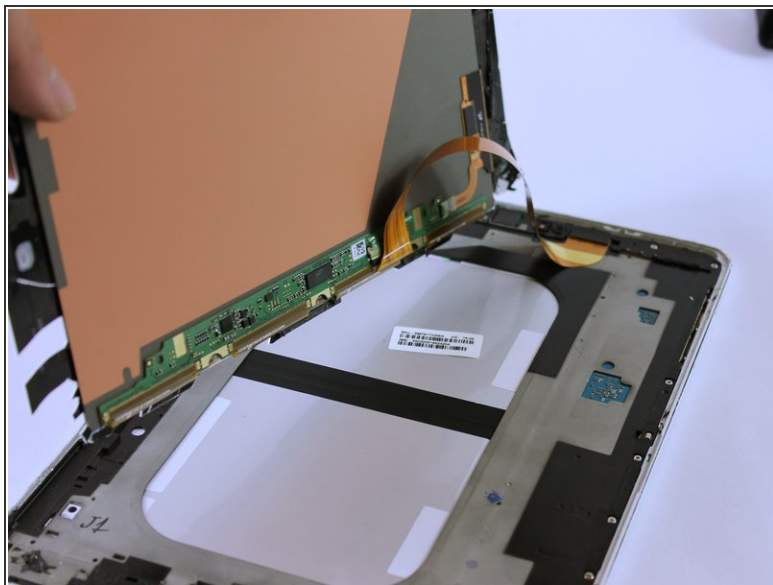
Step 2



- The glue is now melted, so using the metal spudger shown, pry open all sides of the tablet.
- When prying open near the home and touch screen buttons, use a suction cup.

 Do not stick the metal spudger past these buttons as this may damage your device.

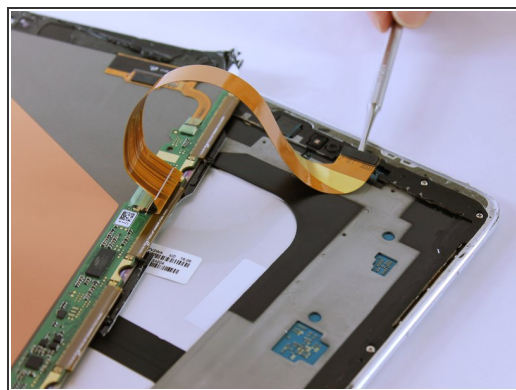
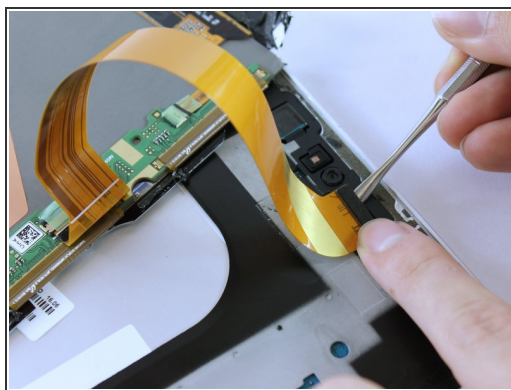
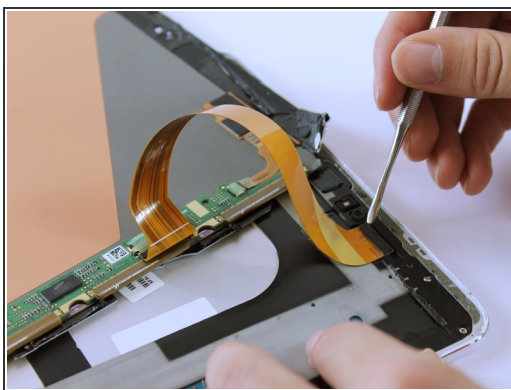
Step 3



- Carefully lift up the screen.

⚠ There is a ribbon cable attached. Lifting the screen too quickly can damage the cable.

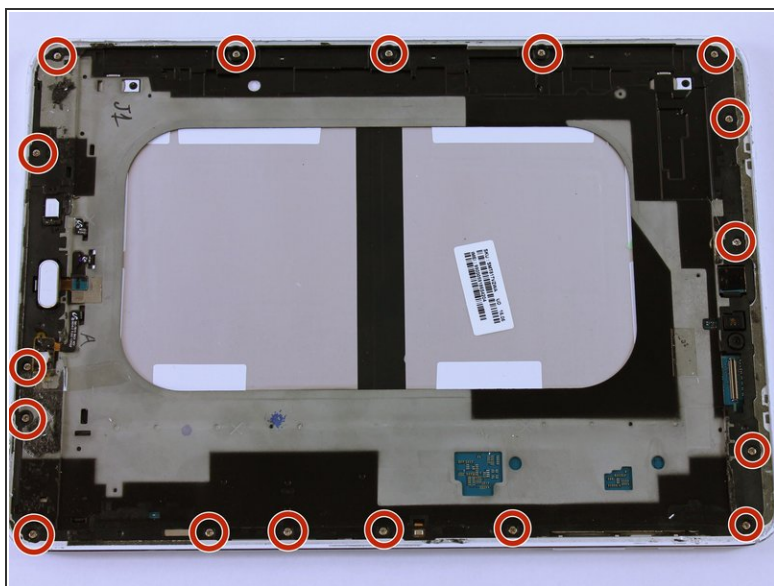
Step 4



- Remove the ribbon cable using the Metal Spudger.

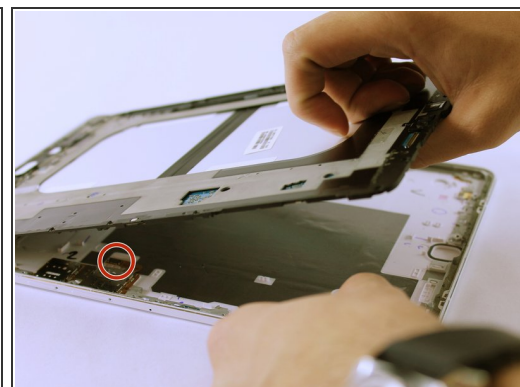
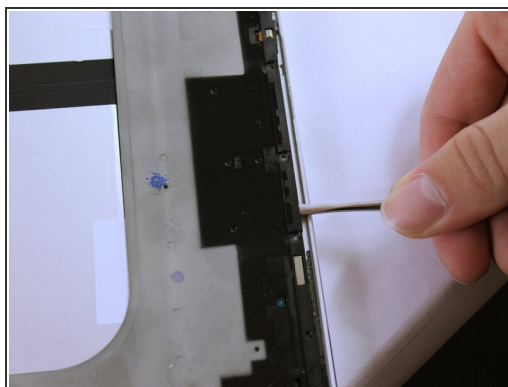
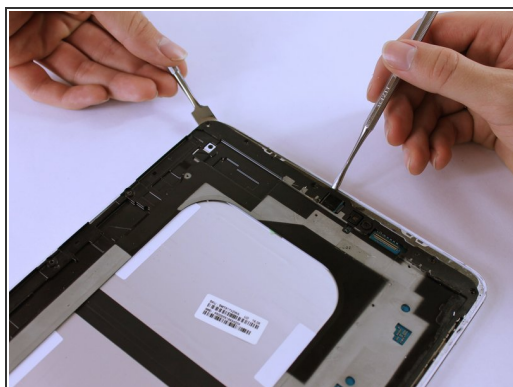
i The ribbon may be taped underneath to the grey frame. Gently lift the ribbon to untape it.

Step 5



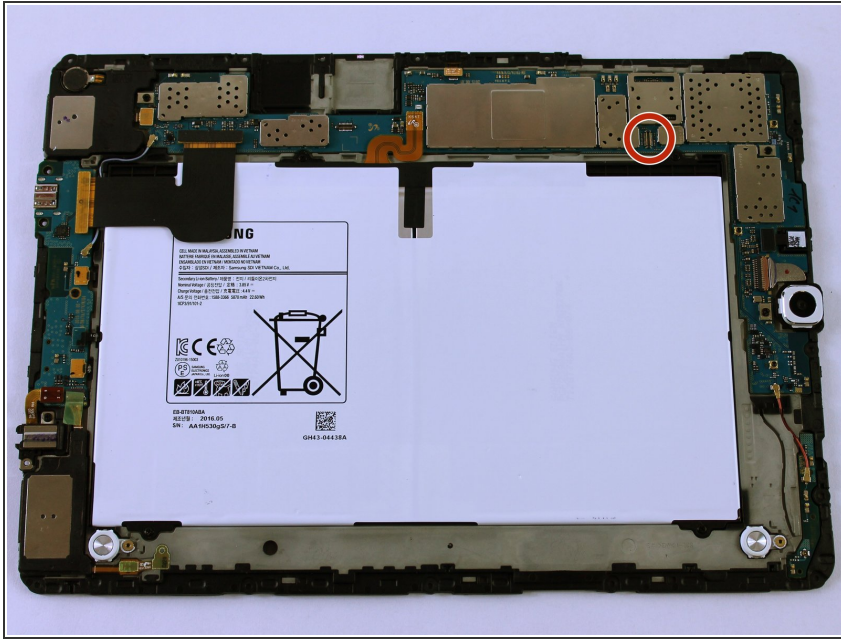
- Remove all seventeen 3 mm screws using a PH000 Phillips screwdriver.

Step 6



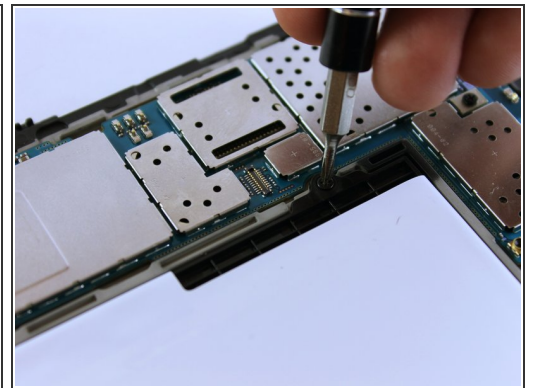
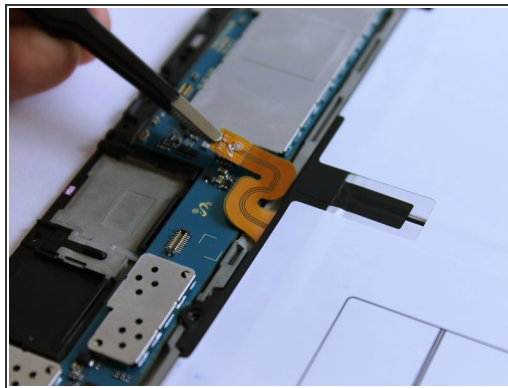
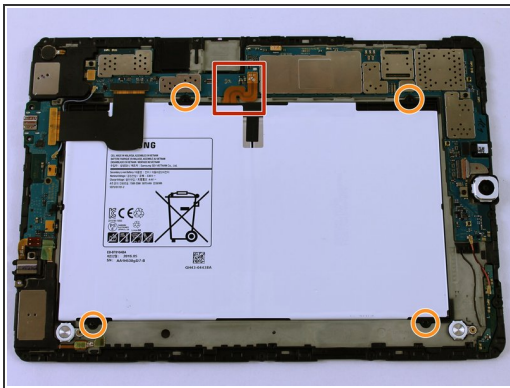
- Lift the black frame using the two Metal Spudgers shown.
- ❗ On the third picture, there is a Sim Card component that is connected to the frame and back cover. As you lift up the frame, it'll detach. This is normal.

Step 7



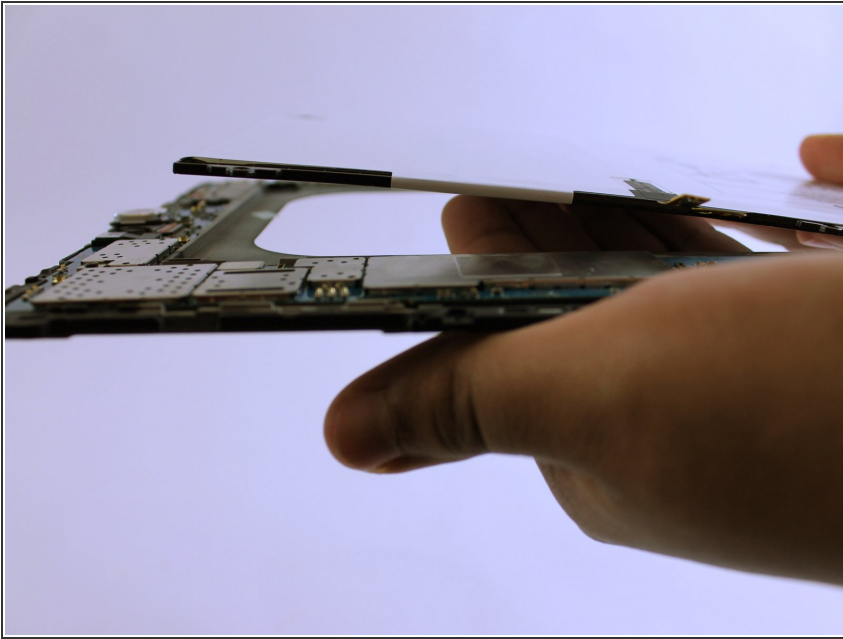
- Once lifted, flip the grey frame over.
- This component connects to the sim card.
- ☑ Remember to click this component back into place when reassembling the tablet.

Step 8 — Battery



- Unclip the orange ribbon cable located above the battery using the Blunt ESD Tweezer.
- Remove the four black 3mm screws using a PH000 Phillips screwdriver.

Step 9



- Hold the frame and pop the battery off from the other side.

To reassemble your device, follow these instructions in reverse order.