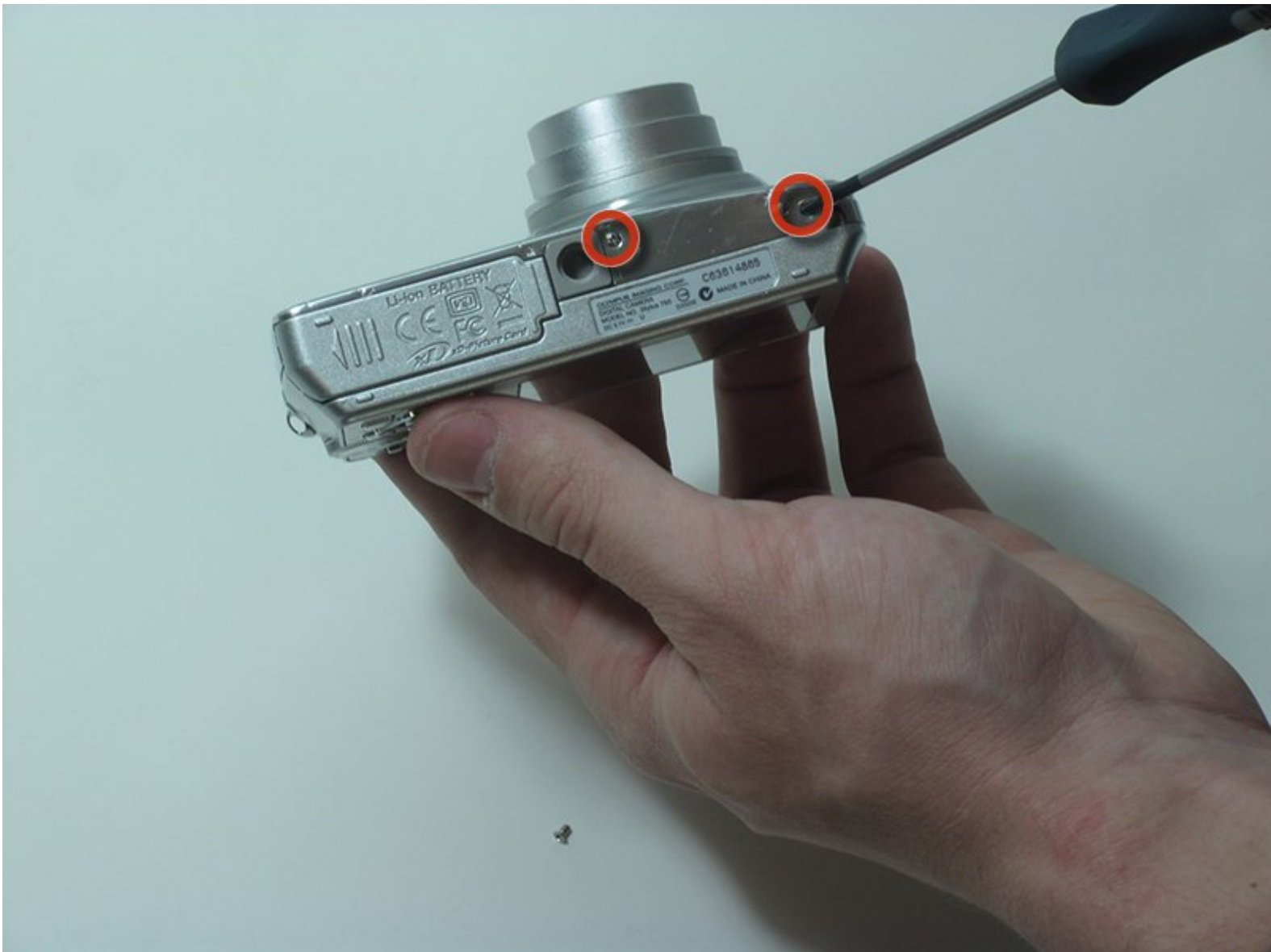




How to clean the Olympus Stylus 760 lens and sensor

This guide will allow users to enter the backside of the lens in order to clean any debris that may be compromising the photographs.

Written By: Derek Guzman

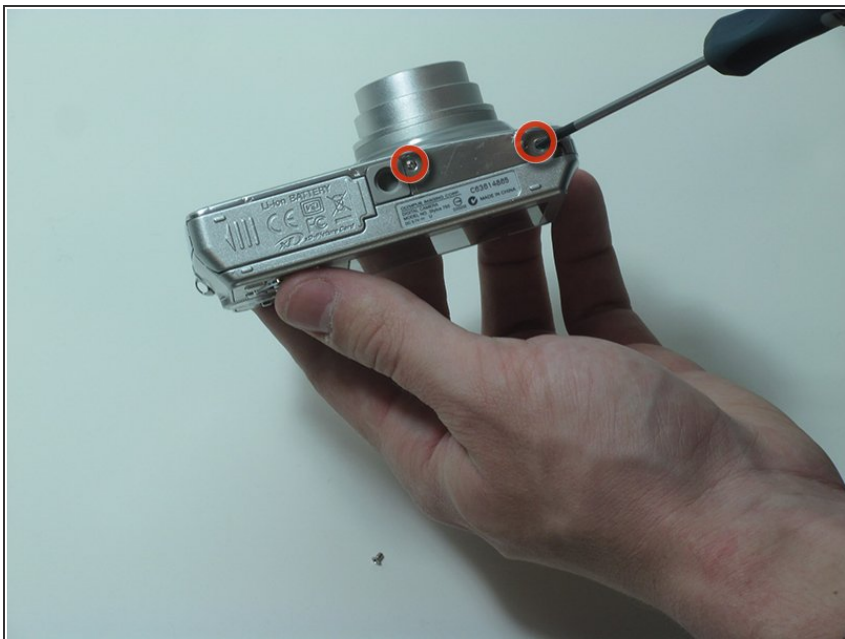




TOOLS:

- [Phillips #00 Screwdriver](#) (1)
- [iFixit Opening Tools](#) (1)

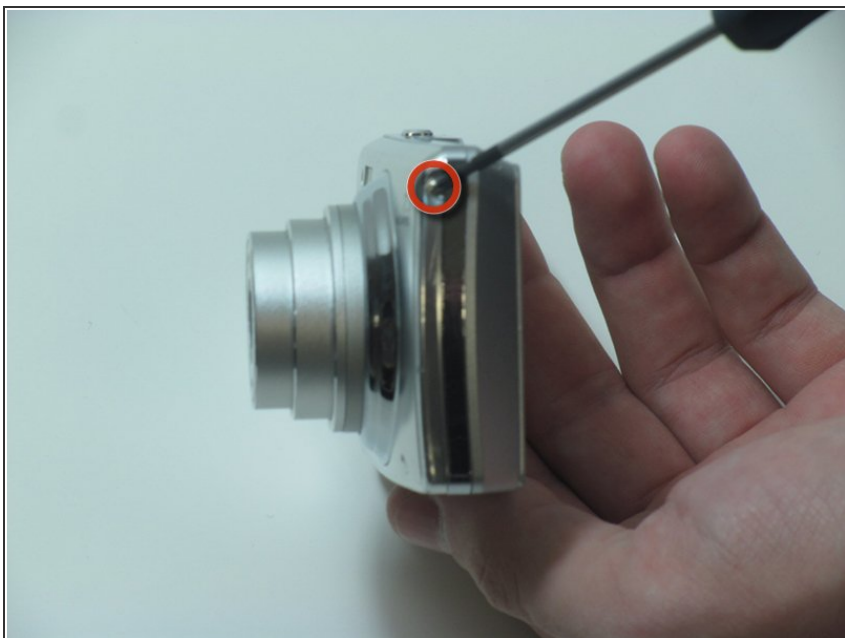
Step 1 — How to clean the Olympus Stylus 760 lens and sensor



⚠ Before starting, be sure to remove the battery from the camera. See [Removing the Olympus Stylus 760 Battery Guide](#) for details.

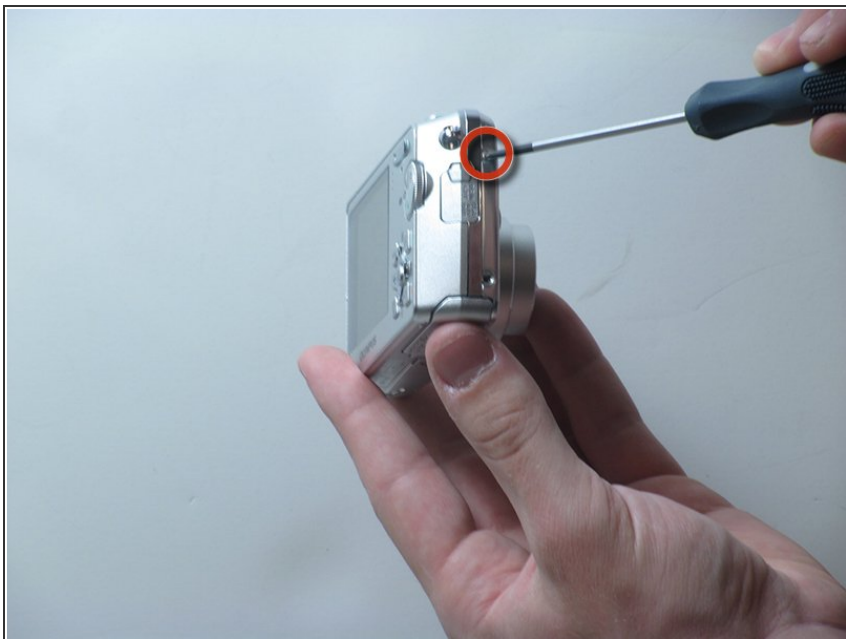
- Using a Phillips size 0 screwdriver, remove the 2 screws from the bottom of the camera

Step 2



- Remove the screw located on the right side of the camera

Step 3



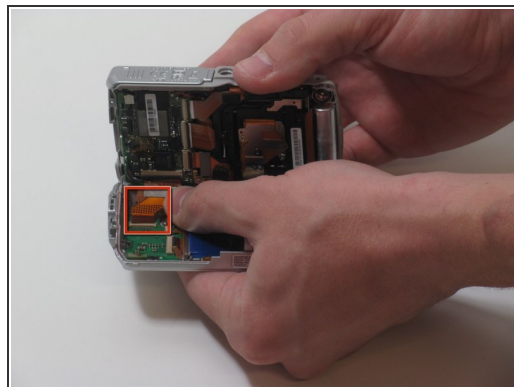
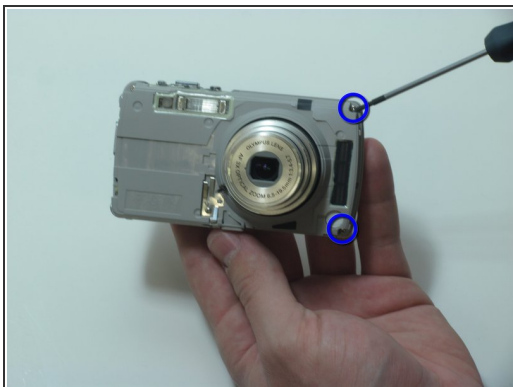
- Remove the two screws from the left side of the camera

Step 4 — Separation



- Use a small prying device to delicately separate the front casing from the back. New line.
- ⚠ When separating the 2 cases be cautious of the silver band and buttons that located in the middle of the camera. They will come loose.

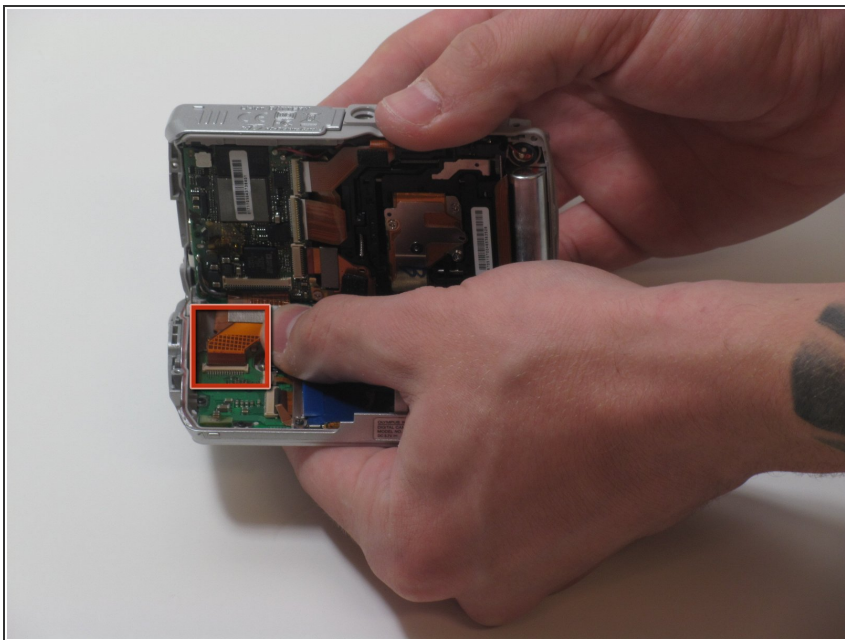
Step 5



- Remove the 2 screws on the right side of the camera.
- Remove the 2 screws on the left side of the camera

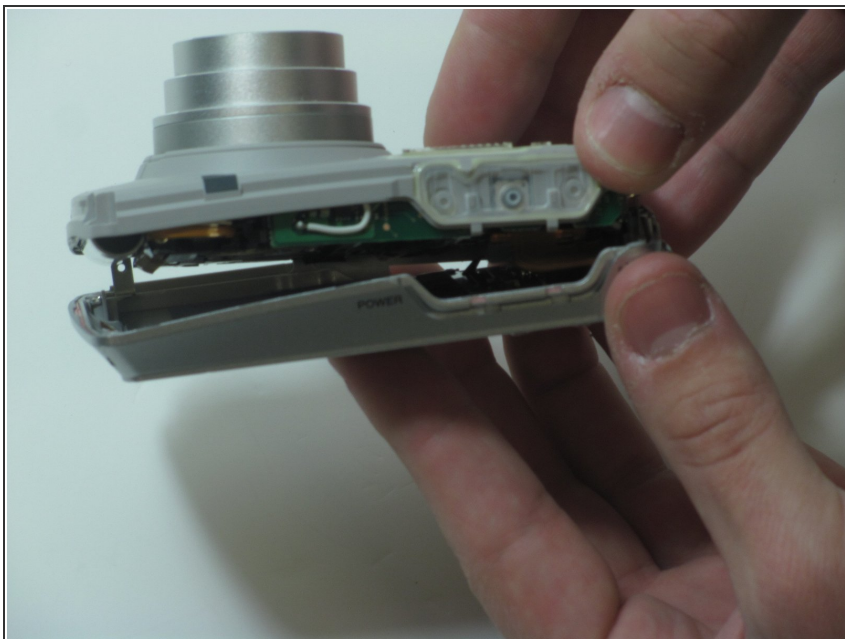
⚠ CAUTION! Circuit ribbon is attached at the top left of the camera be careful when separating the front and back of the camera after removing the 4 screws.

Step 6



- Carefully flip up the clip attaching the ribbon from the rear to the front and pull it out

Step 7



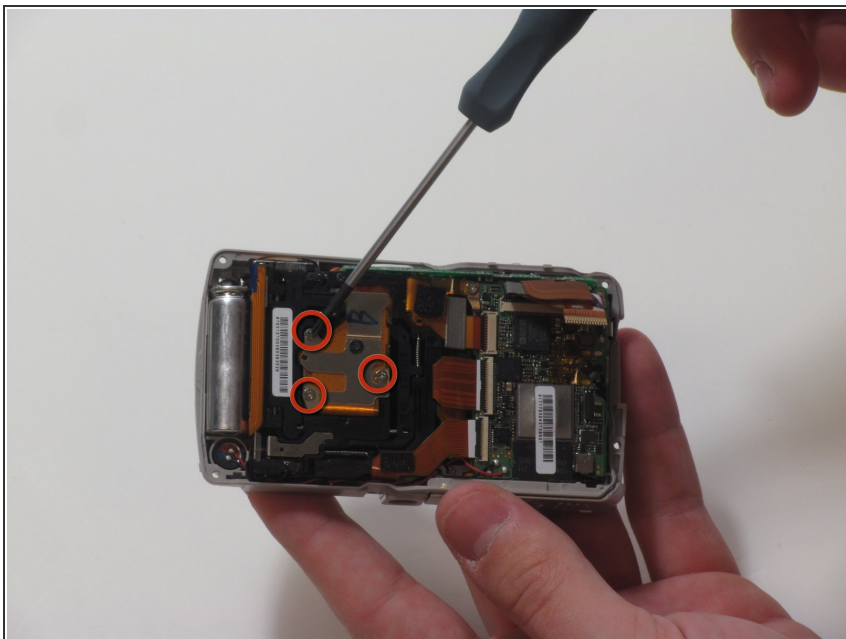
- Carefully separate the front and back of the camera

Step 8



- ❗ You should be left with 4 large pieces, the outer case, inner lens piece, outer silver band and back case containing the LCD display.

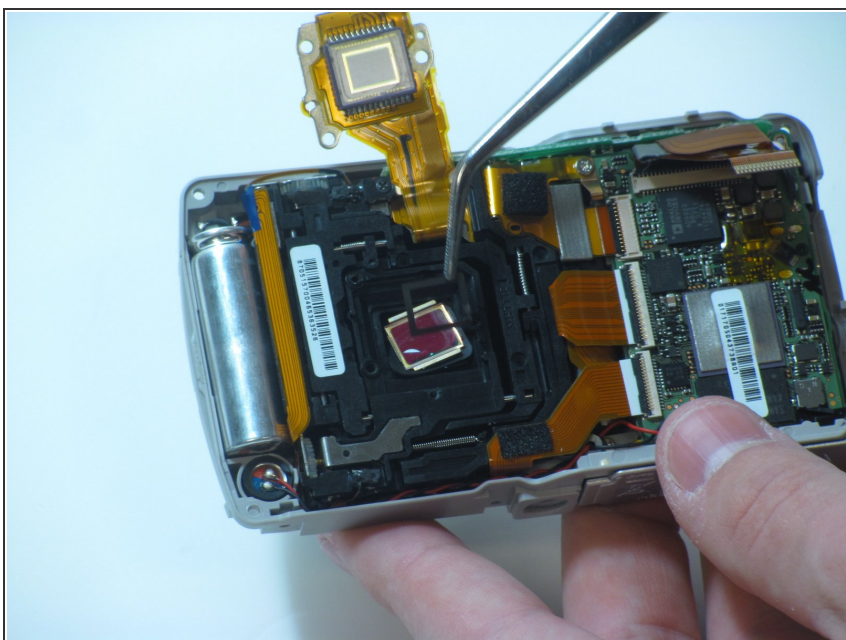
Step 9



- Using a size 0 Phillips head, remove 3 screws holding the ribbon cable that covers the back of the lens.

⚠ CAUTION: small loose pieces under the back lens cover

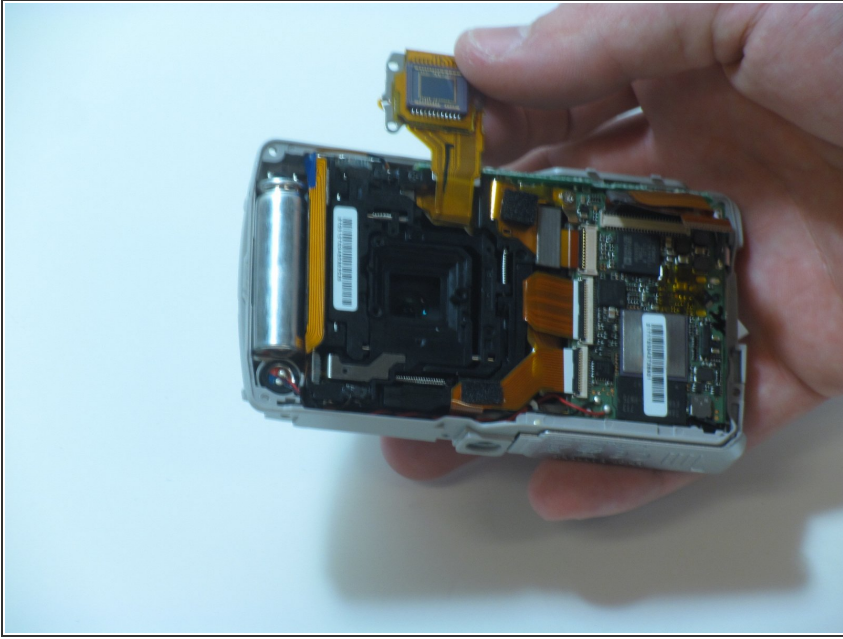
Step 10



- Using tweezers remove tiny square lens cases. There are 4 small pieces.

⚠ The pieces are relatively small, so be careful that they do not fall inside of the lens.

Step 11



- Remove the larger black rubber frame. Clean with condensed air.

To reassemble your device, follow these instructions in reverse order.