



# HP Chromebook 14-ak013dx Charging Port Replacement

This guide will show you how to replace the charging port for an HP Chromebook 14-ak013dx.

Written By: Igli Duro



## INTRODUCTION

In this guide we will be going through the process of removing a broken charging port from an HP Chromebook 14-ak013dx to replace it.



### TOOLS:

- [Phillips #0 Screwdriver](#) (1)
- [iFixit Opening Tools](#) (1)



### PARTS:

- [HP Chromebook 14 DC-in Jack](#) (1)

## Step 1 — Charging Port



- Position the laptop so that the bottom is facing towards you and the fold facing away.
- Using a plastic opening tool or another prying device, remove the five rubber stoppers on the upper side of the laptop to reveal screws.
- Using a Phillips-head screwdriver or another capable tool, unscrew the thirteen 5.0 mm Phillips #1 screws on the base of the laptop.

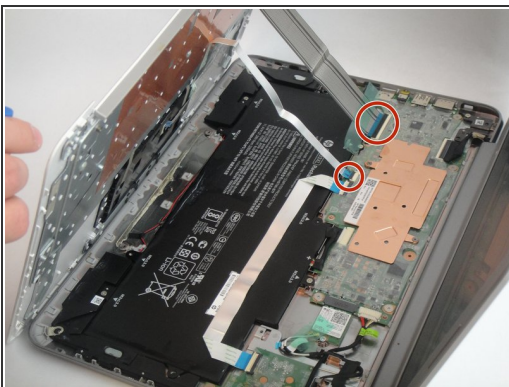


## Step 2



- Flip the laptop over and open it so the keyboard is visible.
  - Using a plastic opening or prying tool, insert the tool between the keyboard and bottom casing. Then rotate the tool away from the laptop to open it up.
- ⚠ Be sure not to pull the keyboard away just yet as the ribbons are still connected.

## Step 3



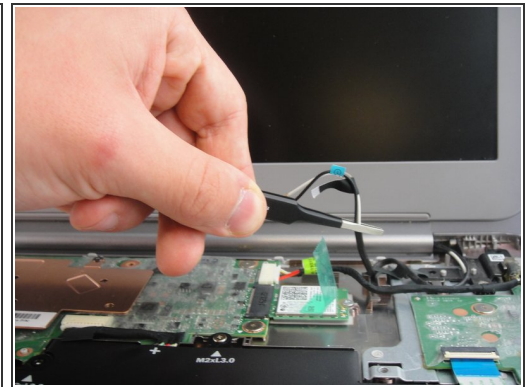
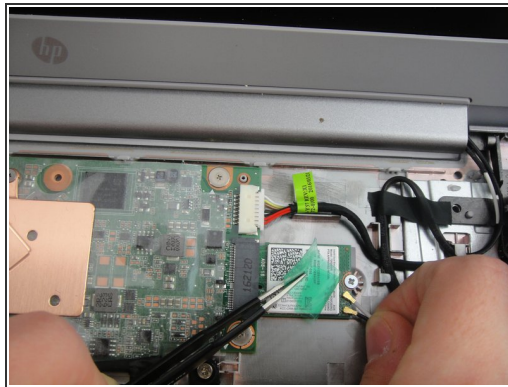
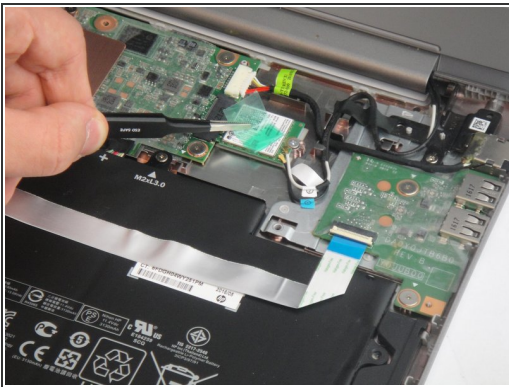
- Using a plastic opening tool or your fingers, lift the two black flaps that hold the ribbons connecting the keyboard and touch-pad to fully disconnect the keyboard from the laptop.

## Step 4



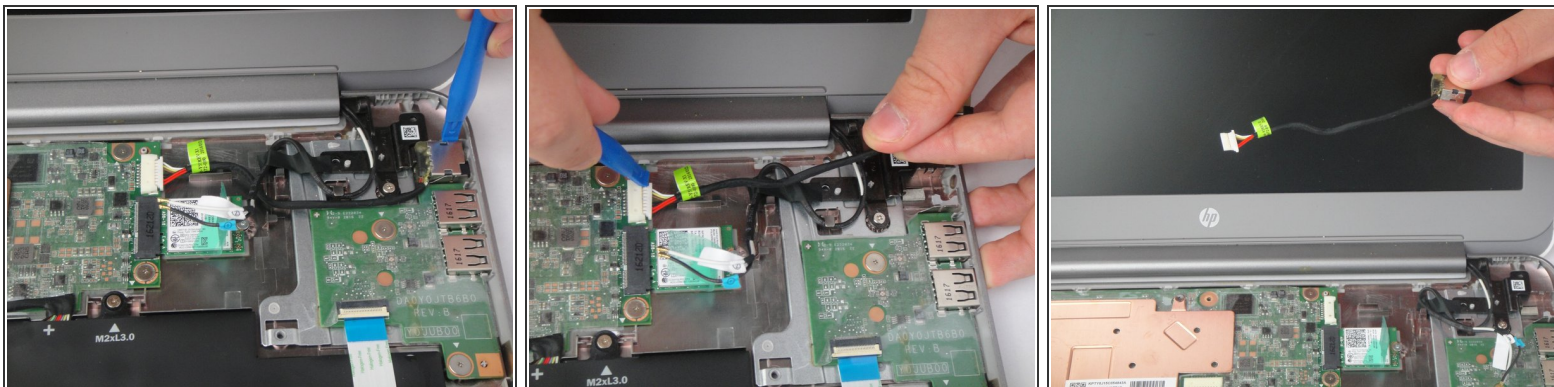
- Disconnect the battery cable from the system board

## Step 5



- Partially remove the tape that is covering the two wires connecting to the wireless adaptor.
- Disconnect the white and black wires from the adaptor and remove it from the plastic piece used to guide the wire to free up space.
- ☒ The wires are labeled (1) and (2), make note of their position for reassembly

## Step 6



- Using a prying tool or your fingers, remove the charging port head.
- Pull by the white plastic or by the wiring away from the connector to remove the piece completely.
- Replace the broken charging port with a new one.

To reassemble your device, follow these instructions in reverse order.