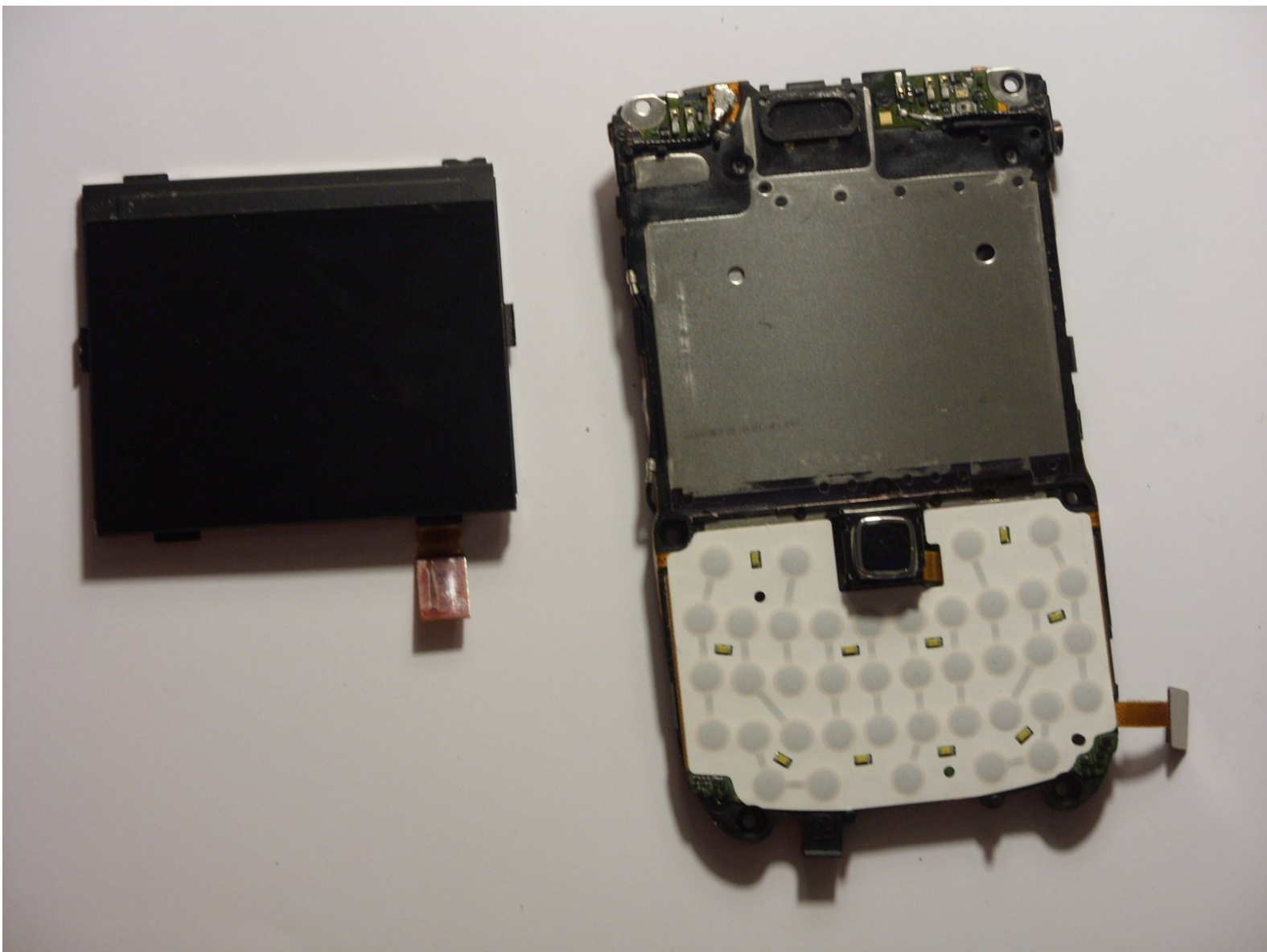




Blackberry Bold 9650 LCD Screen Replacement

Written By: Ryan





TOOLS:

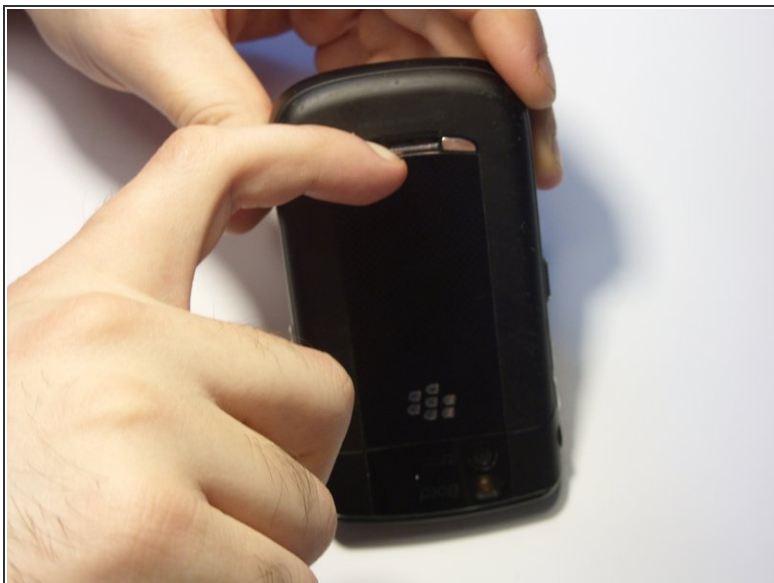
- [Tweezers](#) (1)
- [T6 Torx Screwdriver](#) (1)
- [Spudger](#) (1)



PARTS:

- [Blackberry Bold 9650 LCD Screen](#) (1)

Step 1 — Battery



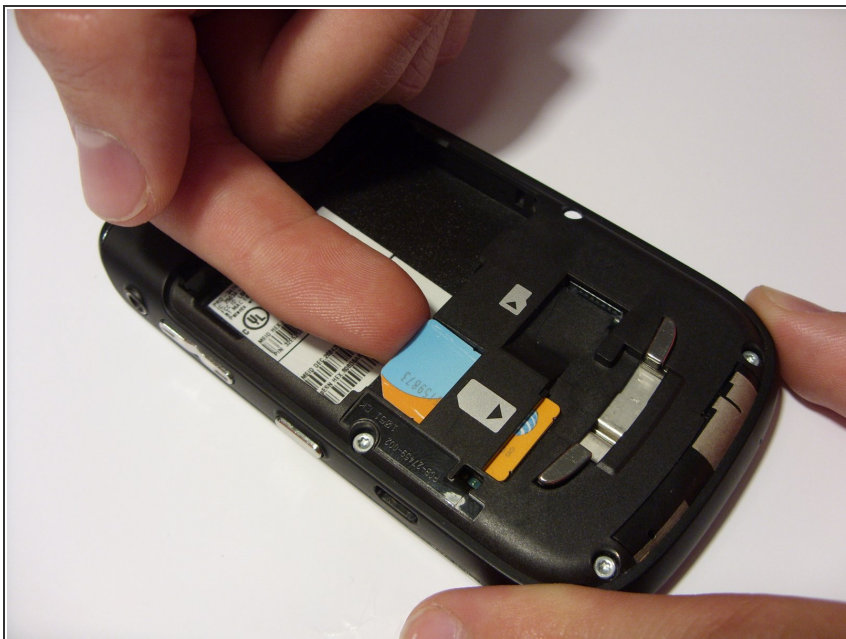
- Turn the device upside down.
- Using your finger, slide the silver cover release button towards the top of the device.
- Lift and remove the back cover.

Step 2



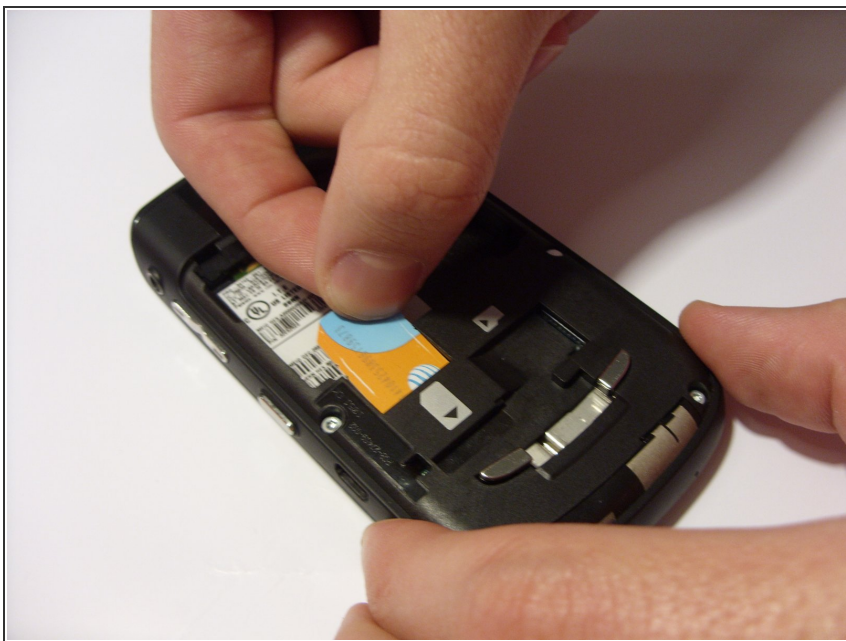
- Using your fingernails, lift the sides of the battery.
- Remove the battery.

Step 3 — SIM Card



- Orient the device so that the screen is facing the ground.
- Using your finger, gently lift the top of the SIM card.

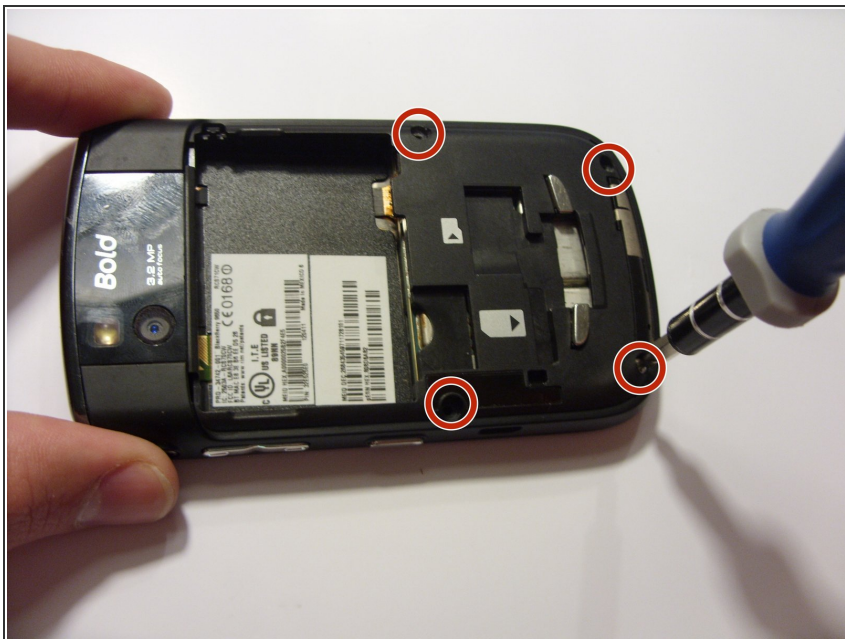
Step 4



- Gently pull out the SIM card.

⚠ The card will break in half if you apply too much force when pulling out the card.

Step 5 — Back Chassis



- Using a T6 Torx screwdriver, remove the four screws from the bottom half of the device.

Step 6



- Orient the device so that the screen is facing you.
- Using a spudger, remove the ear piece cover.

Step 7



- Using a T6 Torx screwdriver, remove the two screws from the top corners of the device.

Step 8



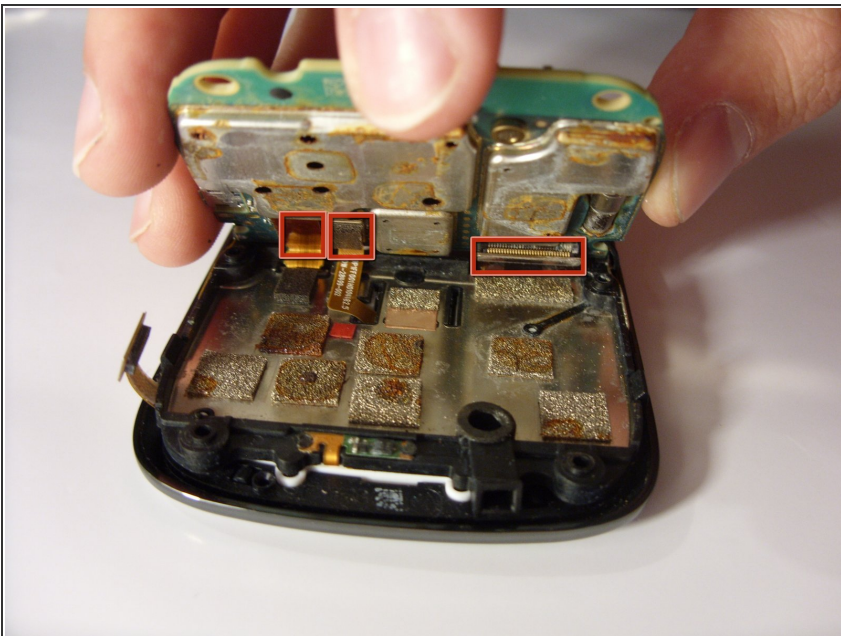
- Remove the back chassis by gently pulling the chassis back and forth.
- ⚠ The headphone jack can break if the chassis is pulled too forcefully.

Step 9 — Mother Board



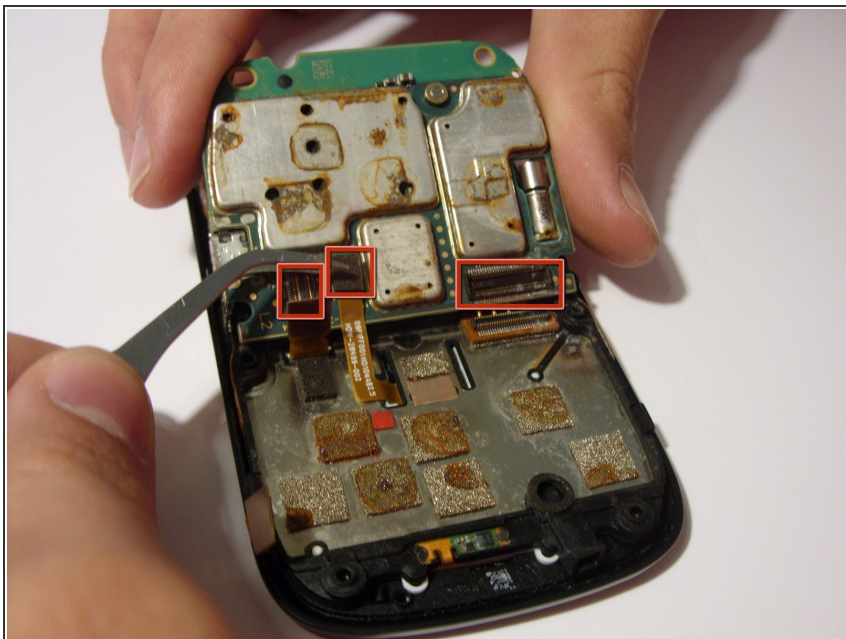
- Orient the device so that the screen is facing the ground, and the top of the phone is facing you.
- Using a pair of tweezers, lift and remove the following:
 - The two round connectors on the top of the mother board.
 - ⓘ The round connectors are hooked into the mother board.
 - The flat connector in the lower corner of the mother board.

Step 10



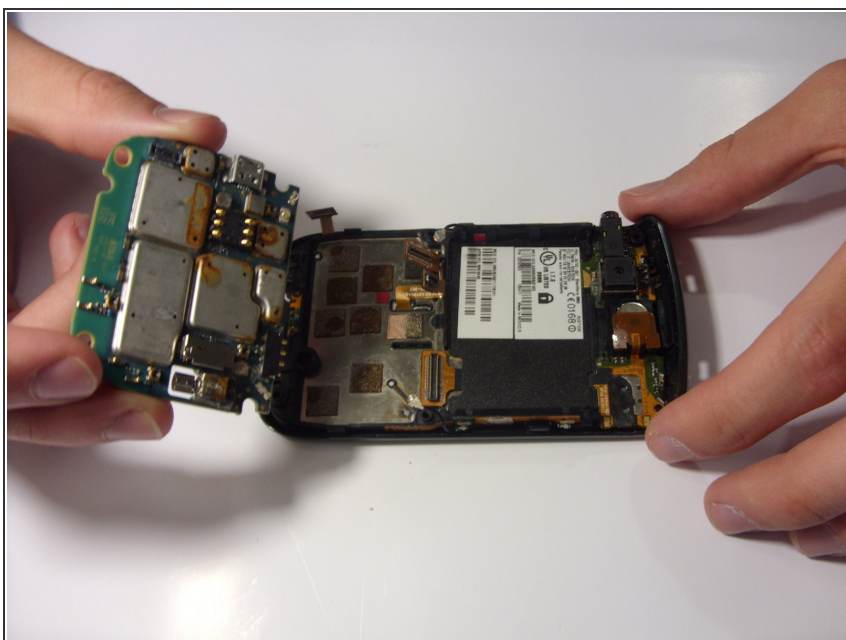
- Using your fingers, carefully lift and remove the mother board.
- ⚠ The connectors underneath the mother board are delicate and easily damaged.

Step 11



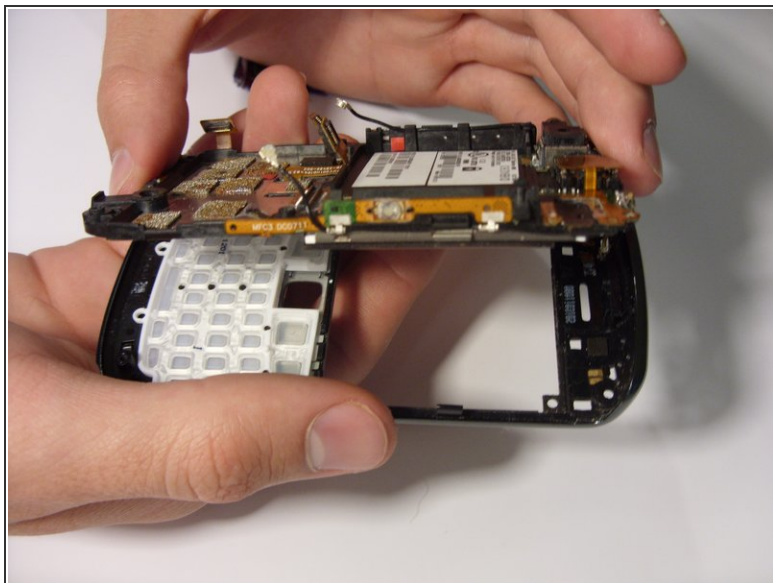
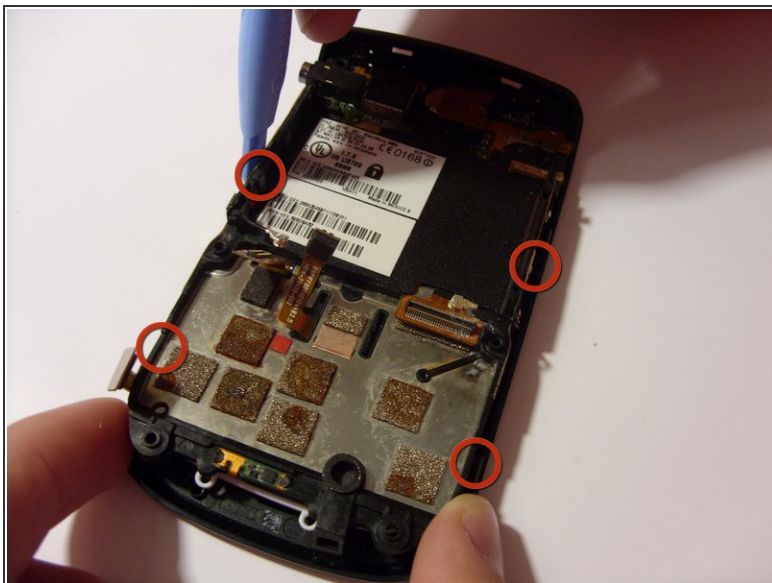
- Using a pair of tweezers, remove the three ribbon connectors.

Step 12



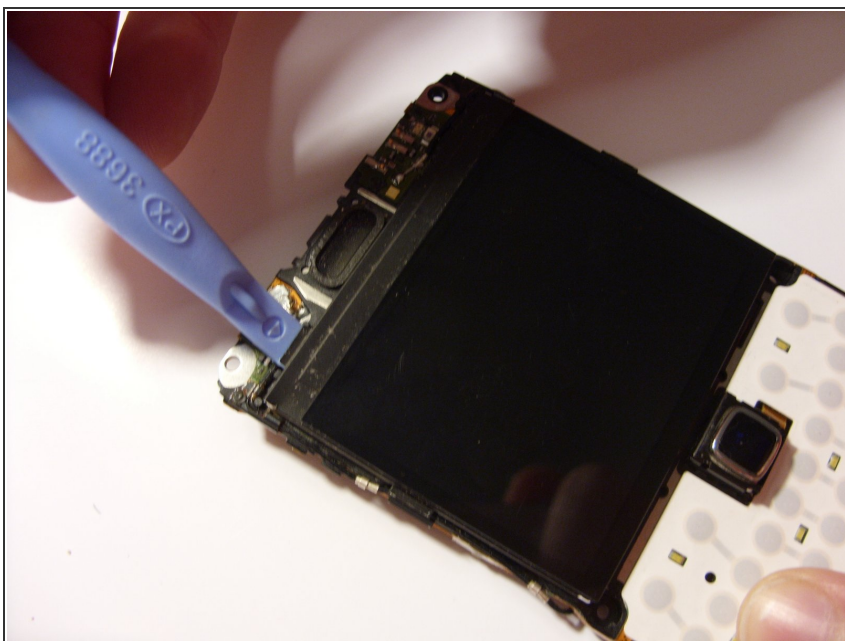
- Remove the mother board by lifting the board upward.

Step 13 — Faceplate



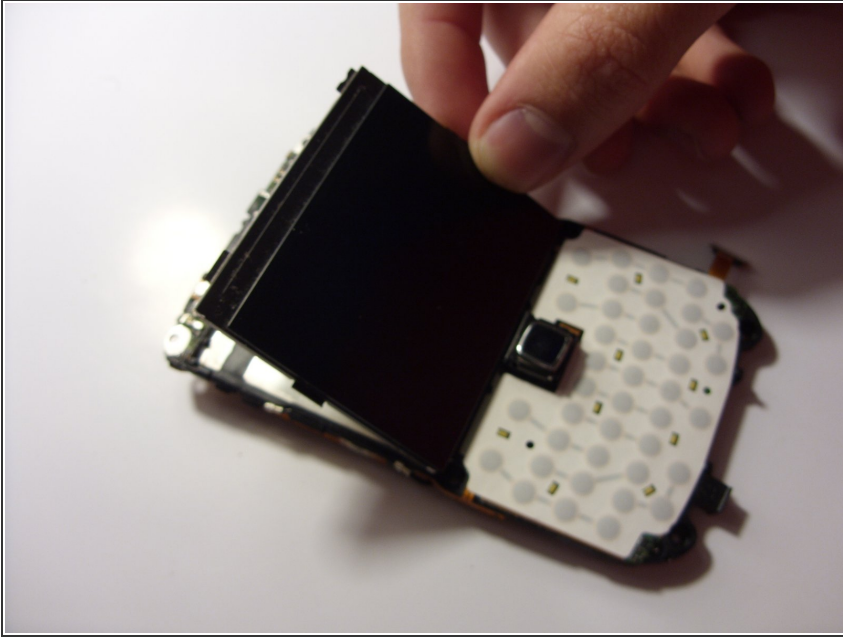
- Using a pry tool, lift up on the four tabs located on the edges of the faceplate.
- Remove the faceplate by lifting the plate upward.

Step 14 — LCD Screen



- Turn the phone so it is facing up.
 - Use the plastic pry tool to gently pry out the screen.
- i** The screen is glued to the phone so it may require some force to remove so use extra caution to prevent the screen from breaking.

Step 15



- Lift the screen away from the device.

To reassemble your device, follow these instructions in reverse order.