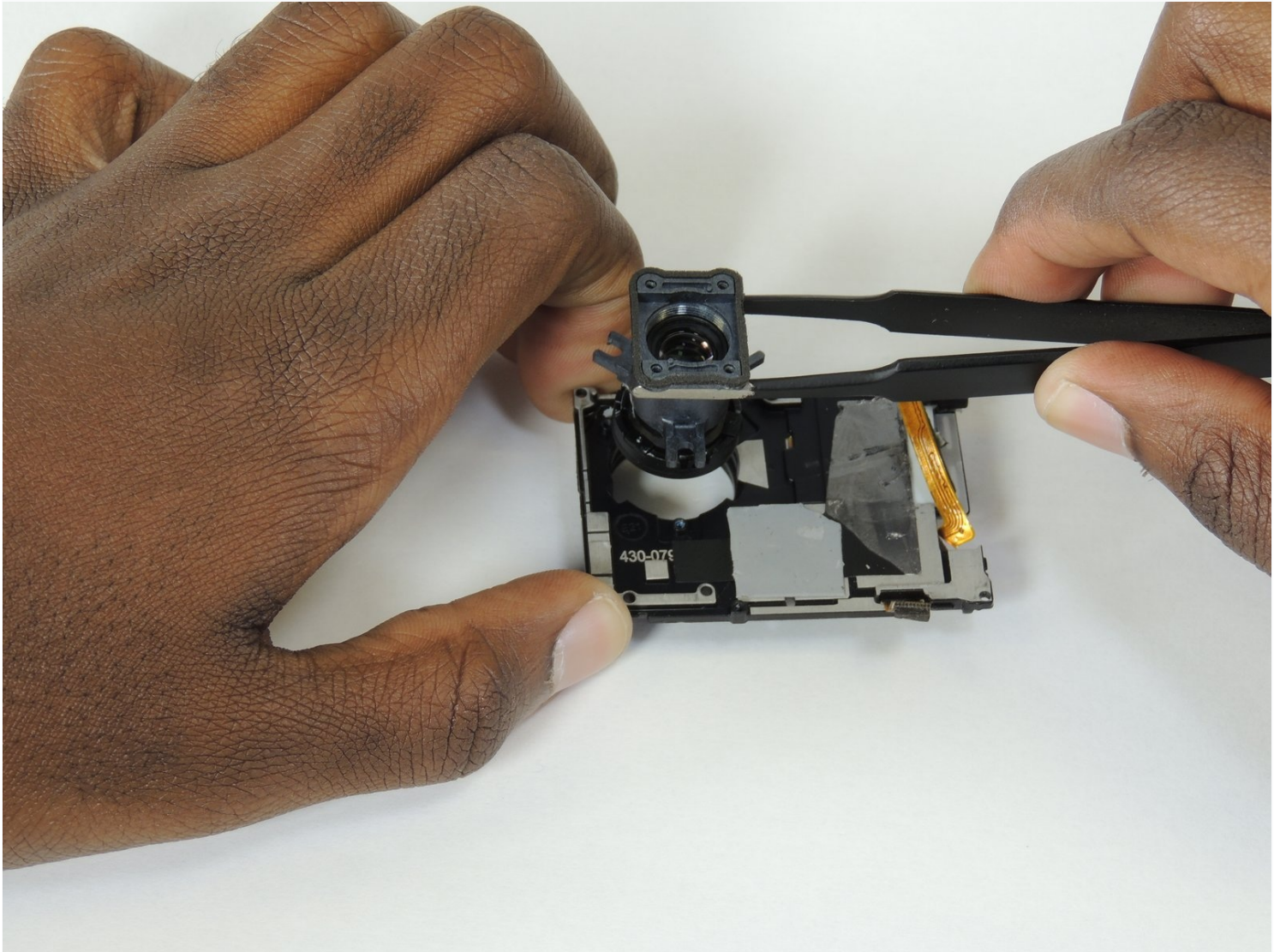




GoPro Hero4 Black Lens Replacement

If the pictures or video are fuzzy or unable to...

Written By: Thomas Sullivan



INTRODUCTION

If the pictures or video are fuzzy or unable to focus, the lens may need replacement. Follow this guide to do so.

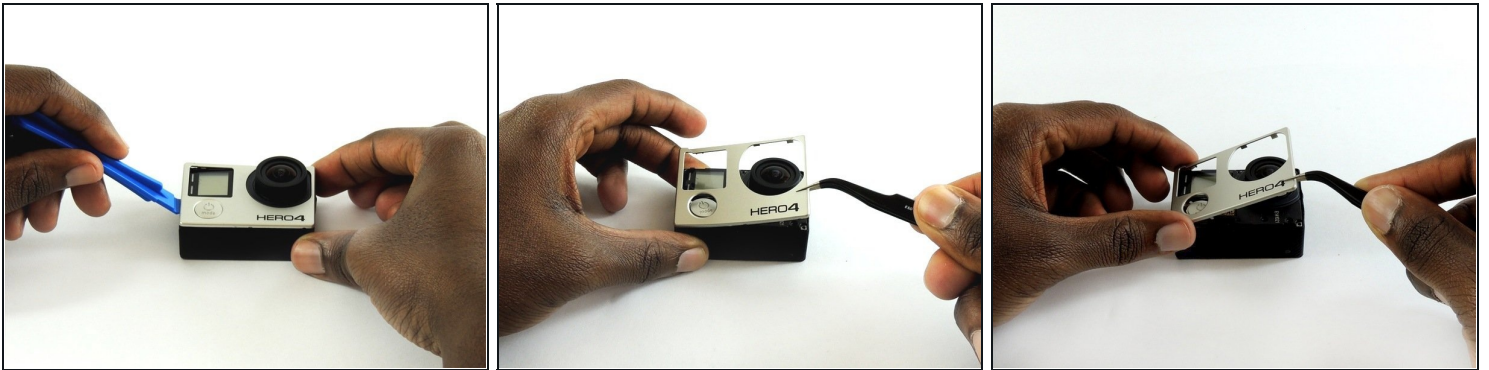
TOOLS:

[iFixit Opening Tool](#) (1)
[Phillips #00 Screwdriver](#) (1)
[Metal Spudger](#) (1)
[Tweezers](#) (1)

PARTS:

[GoPro Hero4 Lens](#) (1)

Step 1 — Midframe Housing



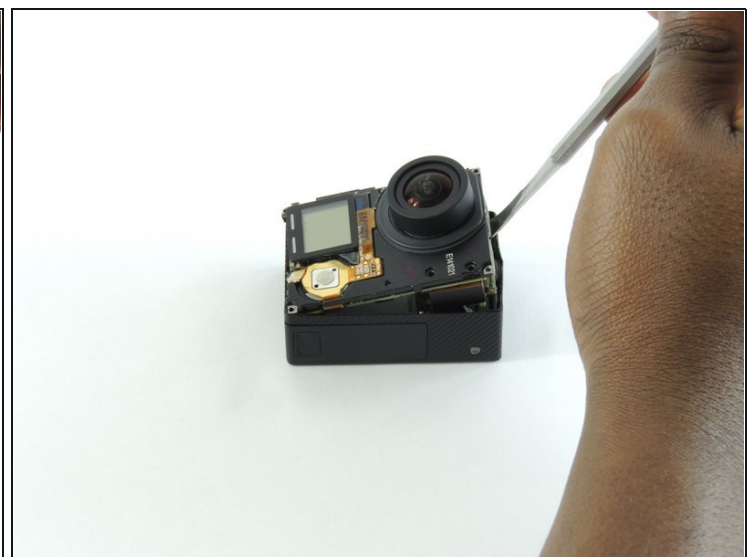
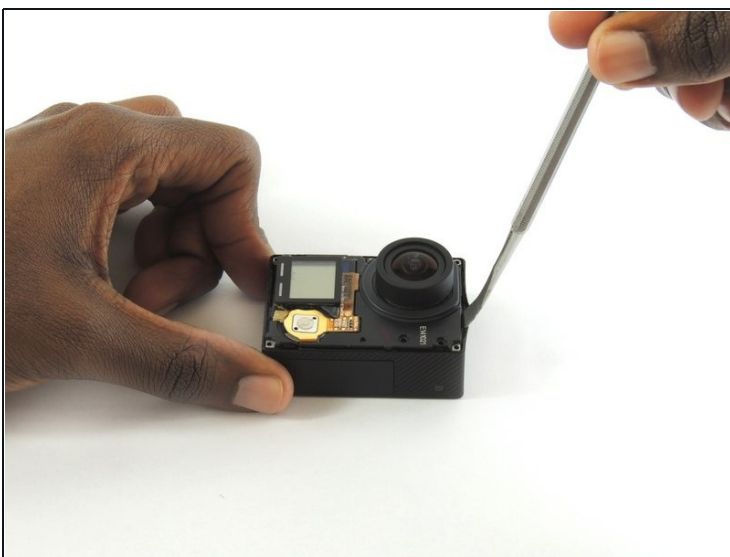
- Remove the faceplate by carefully prying around the edge using a plastic opening tool. Loosen the clips on the edge, then pull the faceplate off.
 - Use the [tweezers](#) to lift the faceplate from the rest of the device.
- ☒ The power button on the front of the GoPro may pop off. Ensure to align it properly during reassembly.

Step 2



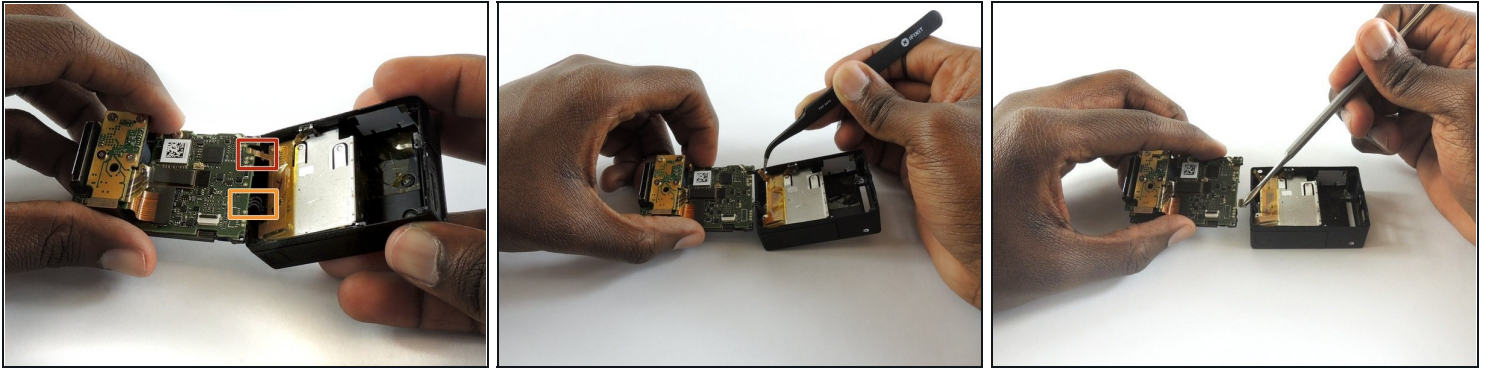
- Using a #00 Phillips head screwdriver, remove the following screws:
 - One 4.6 mm screw
 - Three 8.2 mm screws
 - Two 6.1 mm screws

Step 3



- Insert a metal spudger between the back plastic housing and the camera board assembly. Working around the edge to be careful of the inner components, carefully remove the camera.

Step 4

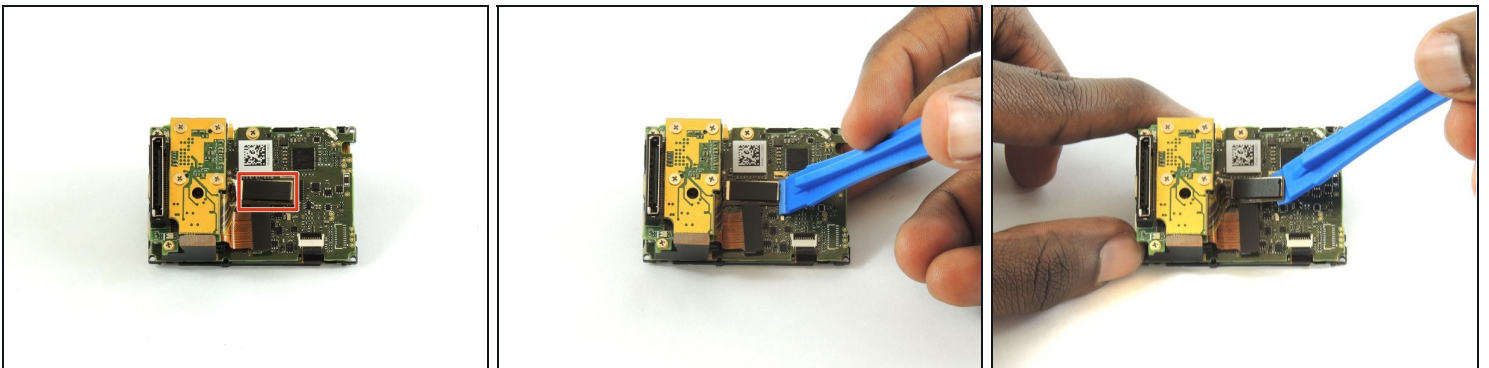


- Using tweezers, remove the ribbon strip by pulling on it. This will remove the connection.
- Push down on the three wires with the metal spudger and the clip will disconnect from the motherboard.

⚠ The clip must be pulled **up and away** from the motherboard. Attempting to slide it out will damage the clip.

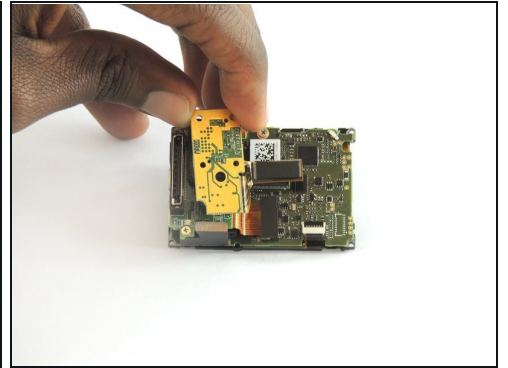
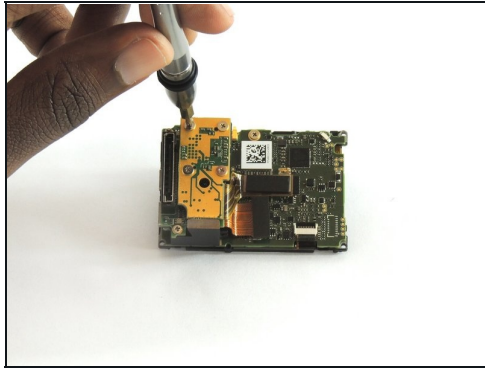
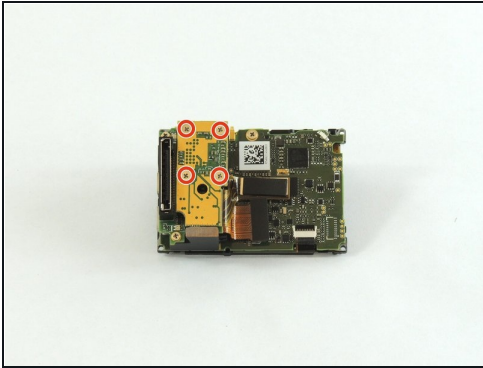
- ☑ During reassembly, remove the black tape on the ribbon cable, turn the camera upside down so you can see the port, and reinsert the cable with tweezers. It's a lot easier!

Step 5 — Camera Sensor



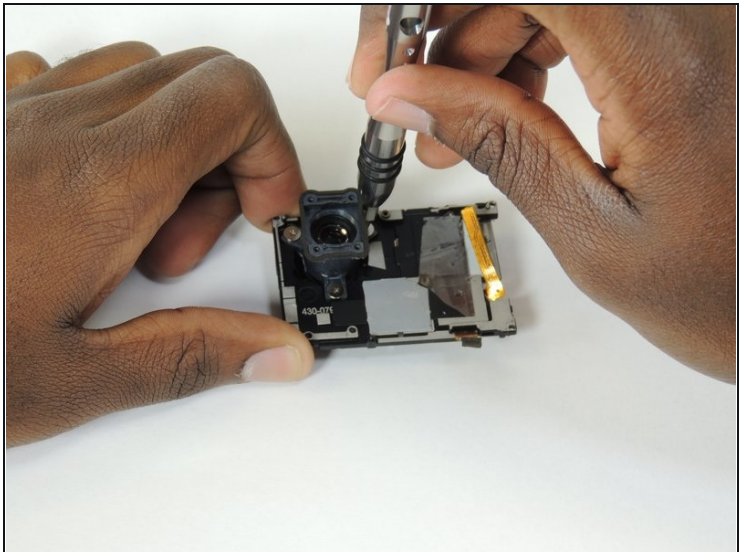
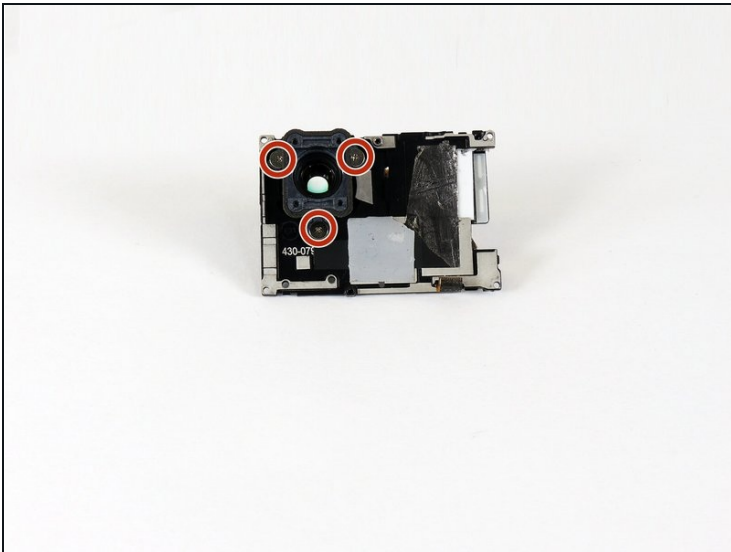
- Using a plastic opening tool, separate the camera sensor's connector from the motherboard.

Step 6



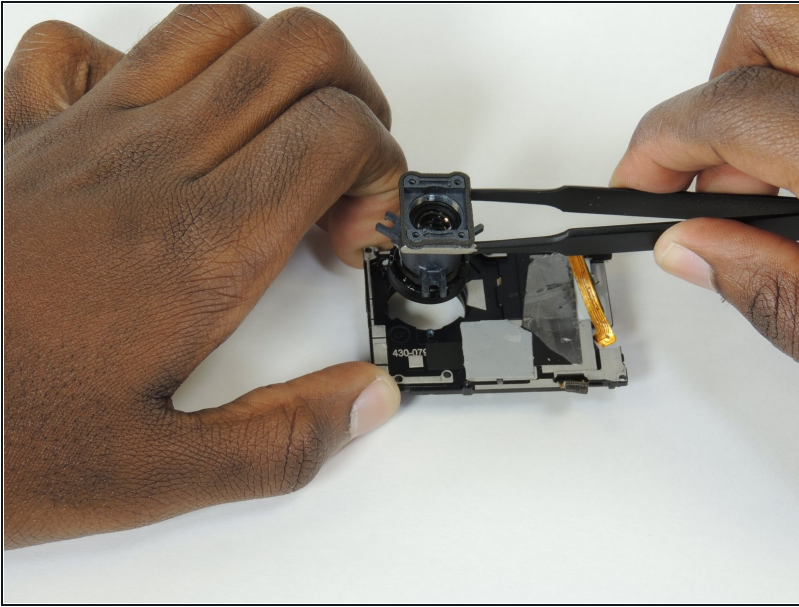
- Using a #00 Phillips head screwdriver, remove the four 3.0mm screws holding the camera sensor.

Step 7 — Lens



- Using a #00 Phillips head screwdriver, remove the following screws:
 - Three 2 mm screw

Step 8



- Lift the lens from the front housing.

To reassemble your device, follow these instructions in reverse order.