



Nintendo 3DS XL 2015 Upper Screen Replacement

This guide will walk you through the process of...

Written By: Ryan Butler



INTRODUCTION

This guide will walk you through the process of opening and replacing the Upper Screen on an original Nintendo 3DS XL.



TOOLS:

JIS Driver Set (1)

Tweezers (1)

ESD Safe

iFixit Opening Tool (1)

Phillips #00 Screwdriver (1)



PARTS:

Nintendo 3DS XL (2015) Upper LCD (1)

Step 1 — Battery



⚠️ Ensure your device is powered off before proceeding. Failure to do so may result in electrical shock or damage to the device.

- Place the 3DS upside down. Remove the game card, headphones, charging cable, stylus, or anything else that may be connected to the device.

Step 2



- Using a JIS #0 screwdriver, loosen the two black screws on the back.
- ① The screws are held in place by captive washers and should not be completely removed.

Step 3



- Once the screws are loosened, pry open the back cover.

Step 4



- The battery is located on the left hand side of the 3DS - to remove, use the small gap located at the top-middle and pull up with a non metal pointed tool.

Step 5 — Motherboard



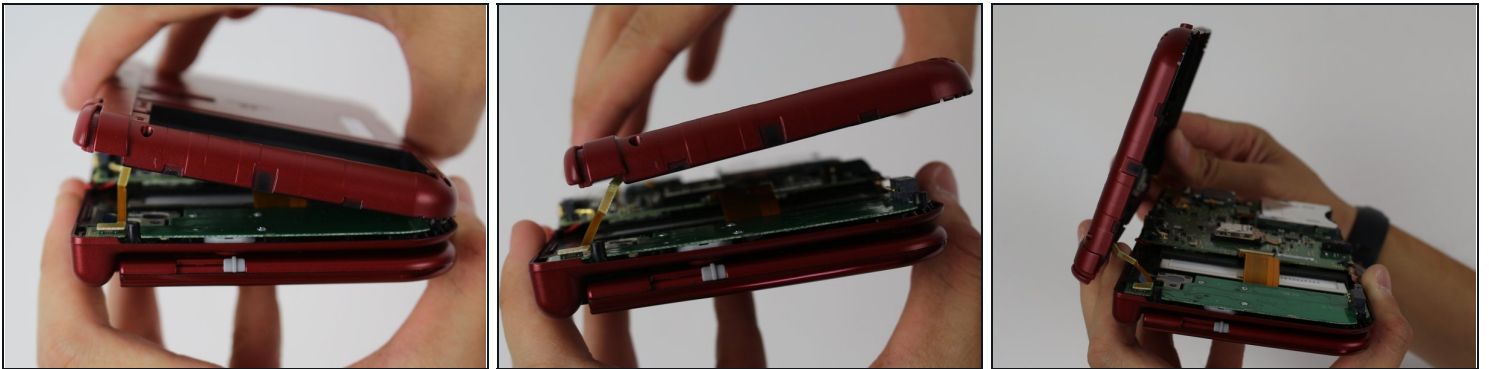
- Using a JIS #000 screwdriver, remove the six 6mm screws around the edges of the secondary cover.

Step 6



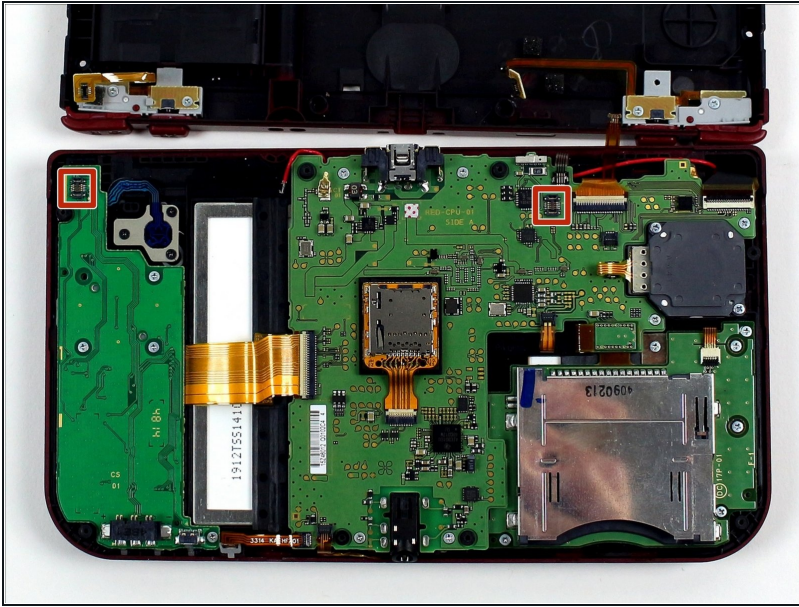
- Using [tweezers](#), carefully pop out the rubber bumpers located at the top side of the 3DS. Removing them will reveal another two 6mm screws. Remove these screws using a JIS #000 as well.

Step 7



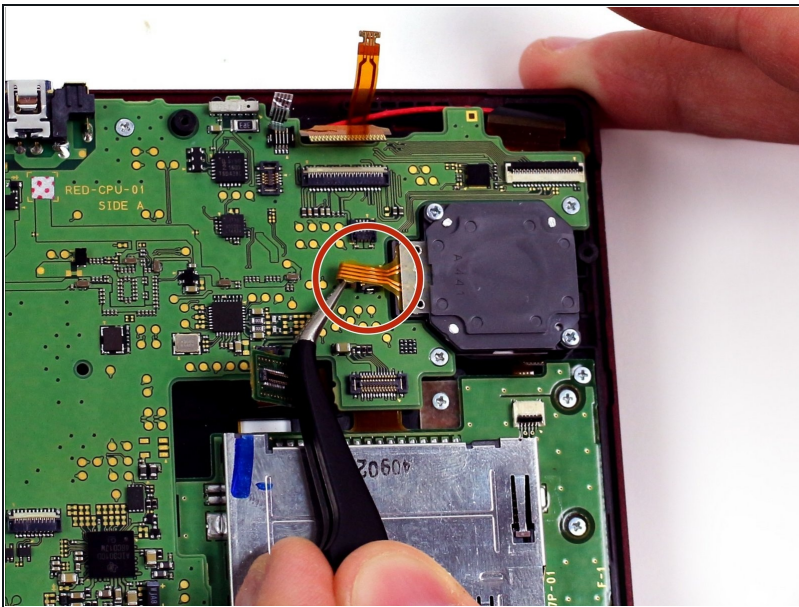
- To separate the cover, carefully lift it up and away from the hinges (in order to clear the headphone port), then pivot it towards the hinges to expose the circuit boards.
⚠ Don't fully remove the cover yet, or you may damage the delicate ribbon cable that still connects it to the motherboard.

Step 8



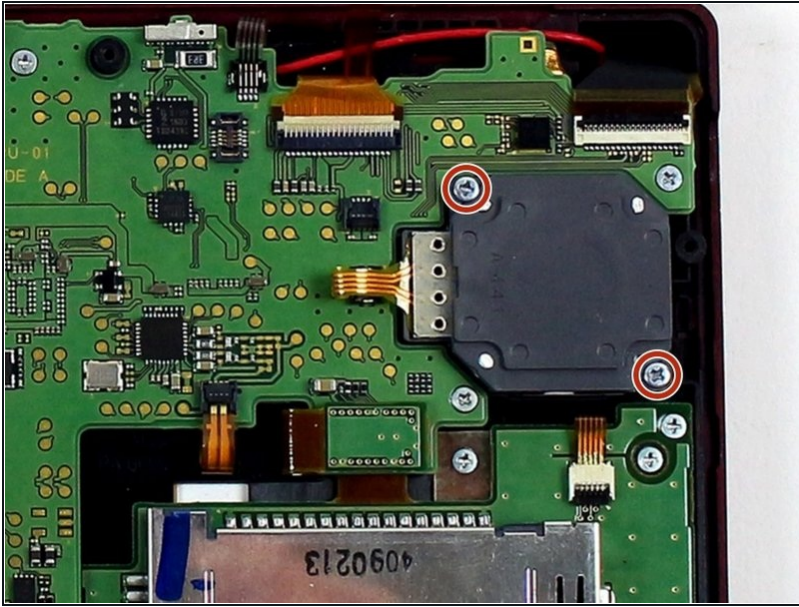
- Use a pair of tweezers to lift away the two plugs that latch the L/R/ZL/ZR button ribbons to the motherboard. You can now remove the back cover completely and set it aside.

Step 9



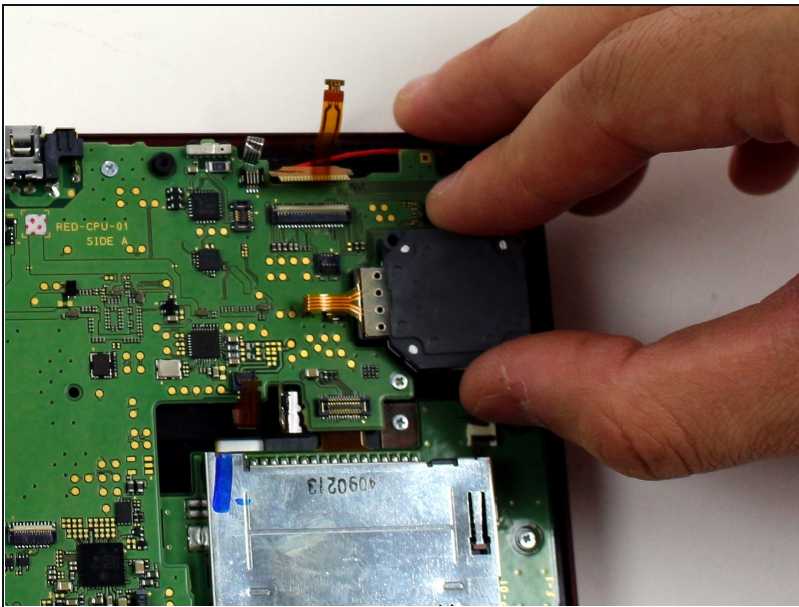
- Use tweezers to flip up the small, hinged locking flap in order to unlock the [ZIF connector](#) securing the circle pad ribbon.
- Slide the ribbon out of the ZIF connector.

Step 10



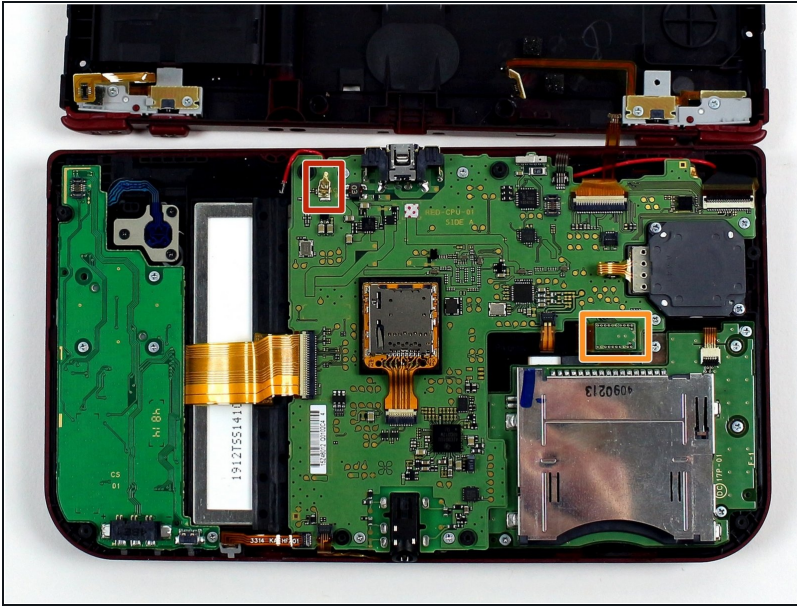
- Using a JIS #000 screwdriver, remove the two 8 mm screws securing the circle pad.

Step 11



- Lift the circle pad casing upward to remove it. There will be some friction, but it should not require excessive force.

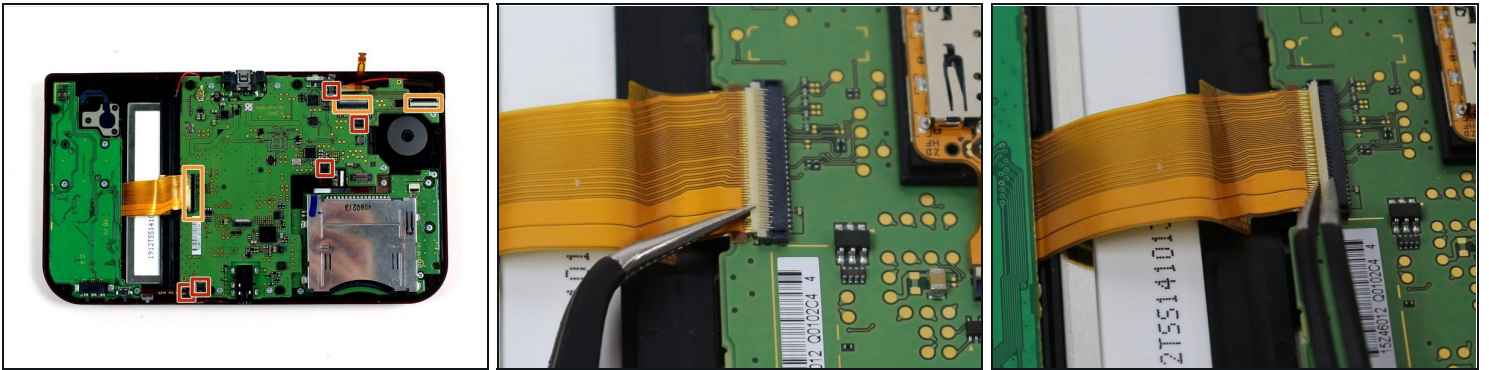
Step 12



- Locate the gold terminal plug with a red cable at the top left of the motherboard. Using your fingers, carefully pull the plug straight upward to remove.
- Use a pair of tweezers to disconnect the single ribbon connector.

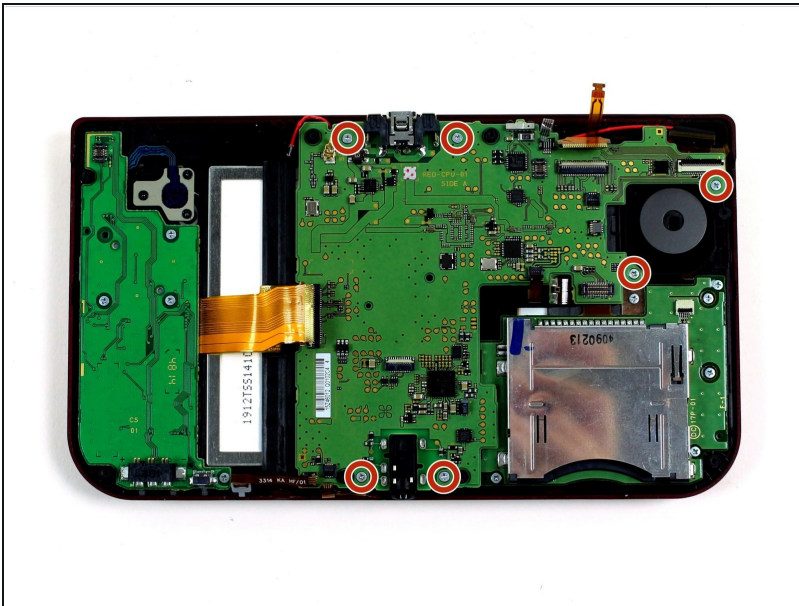
⚠ Don't do what we did -- be very careful **not** to pull on the red cable.

Step 13



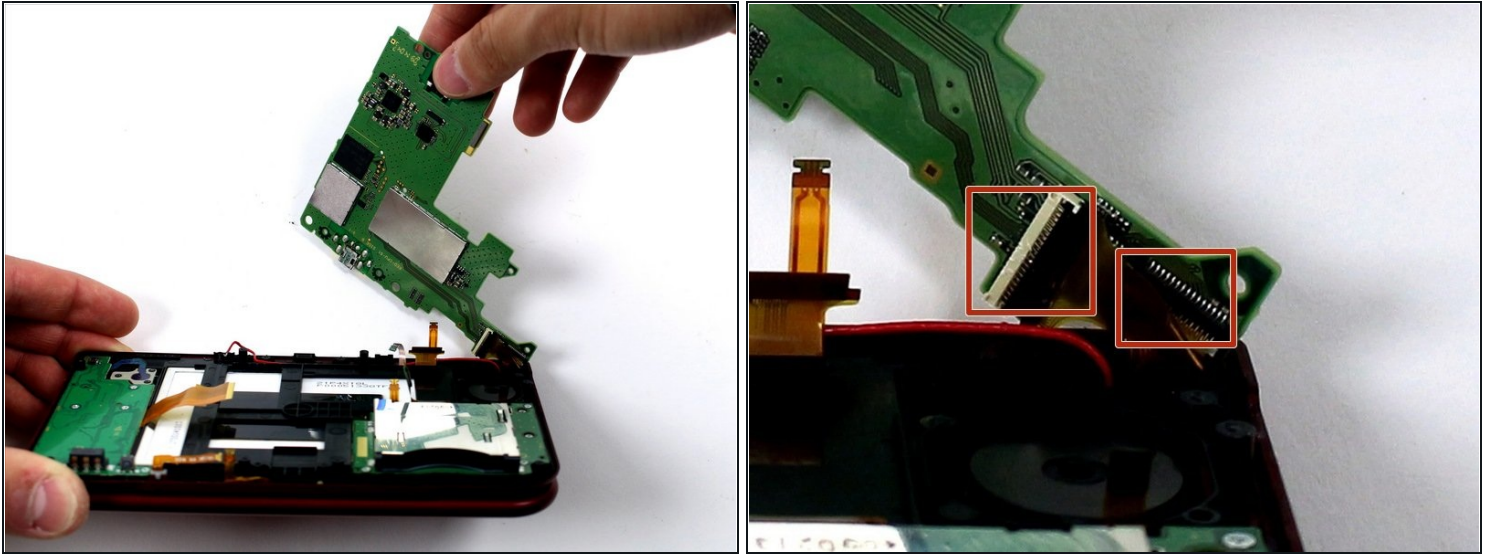
- Using tweezers, gently pull the five marked ribbons out of the ZIF connectors along the sides of the motherboard.
 - ⚠ These ZIF connectors are held in place by friction and do **not** have locks—lifting the flaps on these connectors will break them! Note that in some models the upper-most connector may have a lock.
- Three of the ribbon connectors have plastic clamping flaps that cover the ribbon to prevent slippage. Use the tweezers to flip them up before ribbon removal.
- ☑ When reassembling the device, be sure to flip the ZIF clamps back down.
- ⓘ While the SD card reader is shown as removed in this photo, it is optional for the removal of the motherboard.

Step 14



- Using a JIS #000 screwdriver, remove six 4mm screws along the edges of the motherboard.

Step 15



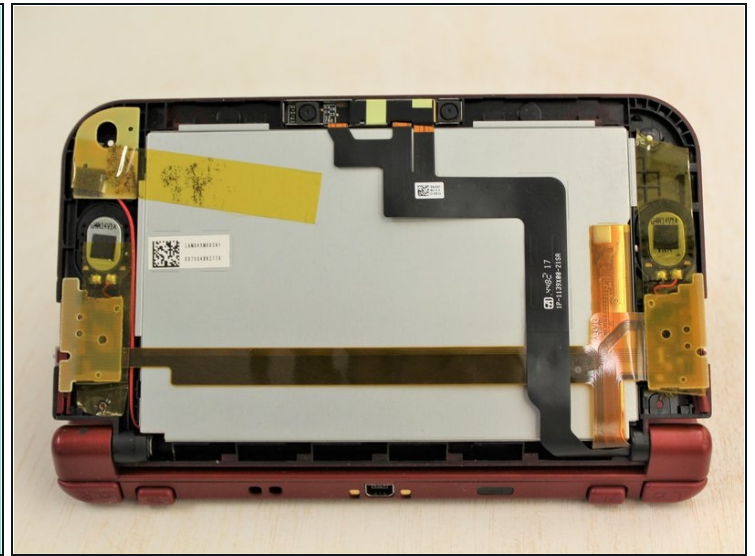
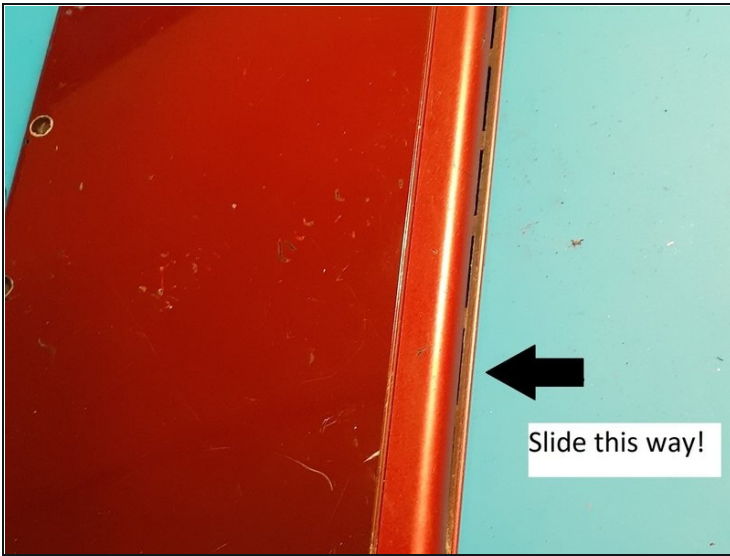
- Carefully pivot the motherboard 90 degrees toward the hinges to reveal two more ZIF connectors on the underside of the motherboard.
- Both have latches that must be flipped up. The left, longer latch is black; the right, shorter one is white. Flip up the flaps, slide the ribbons out and remove the motherboard.
- ① Note which way the ribbons slide into their connectors carefully, as they are different.

Step 16 — Top Display Casing



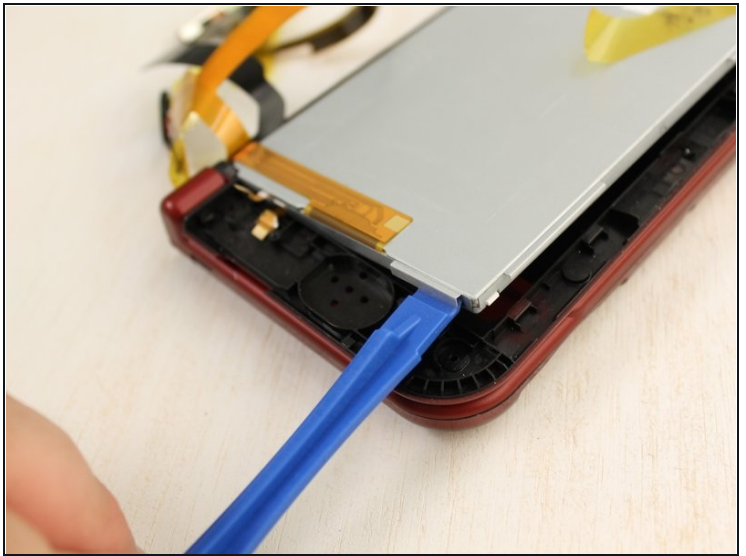
- Using a 1.5 flat head, remove the four red rubber stickers that are on the inside of the casing.
 - Underneath the rubber is a silver sticky
- Using the PH00 screw driver, remove the screws.

Step 17



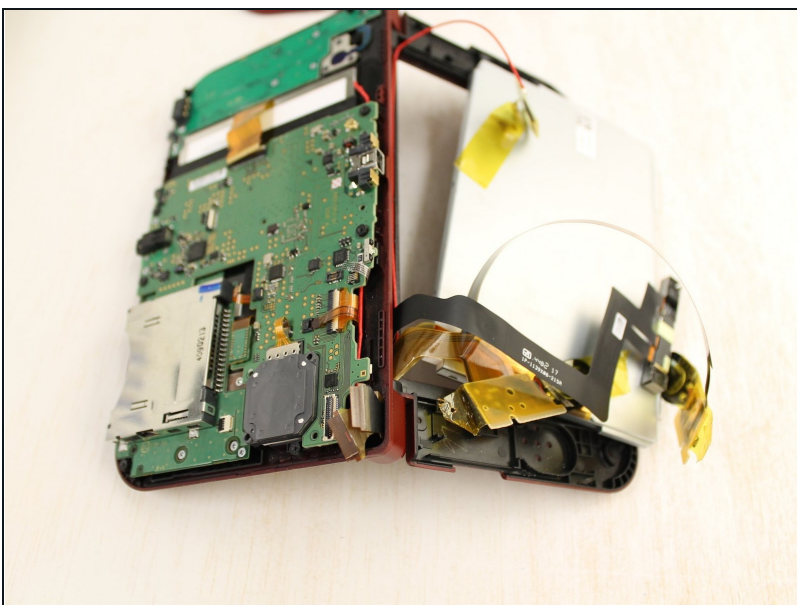
- From the hinge, slide the outer portion of the top shell so that it separates from the inner portion.
- ⚠ This step was edited recently because the previous version was risky. It told people to use a spudger and slide it around the edges. DO NOT DO THIS!!! It will snap tabs off!
- The casing will become loose, and just lift the casing off.

Step 18 — Upper Screen



- ☒ Make sure that all the taped parts are untaped from the screen and moved onto the side.
- Using a plastic spudger, slightly lift it from underneath the lips and move it around the screen.
- Once it is loose, lift the screen carefully.

Step 19



- The cables to the LCD are attached to the lower part of the 3DS' motherboard.
- ⚠ Be careful to avoid pulling the cables through the 3DS to prevent further damage.
- ☒ Make sure to replace all cables to the correct location.

To reassemble your device, follow these instructions in reverse order.