



JBL Flip 3 Side Passive Driver Replacement

This guide will show how to replace the side passive driver.

Written By: College Student





TOOLS:

- [Spudger](#) (1)
-

Step 1 — Side Passive Driver



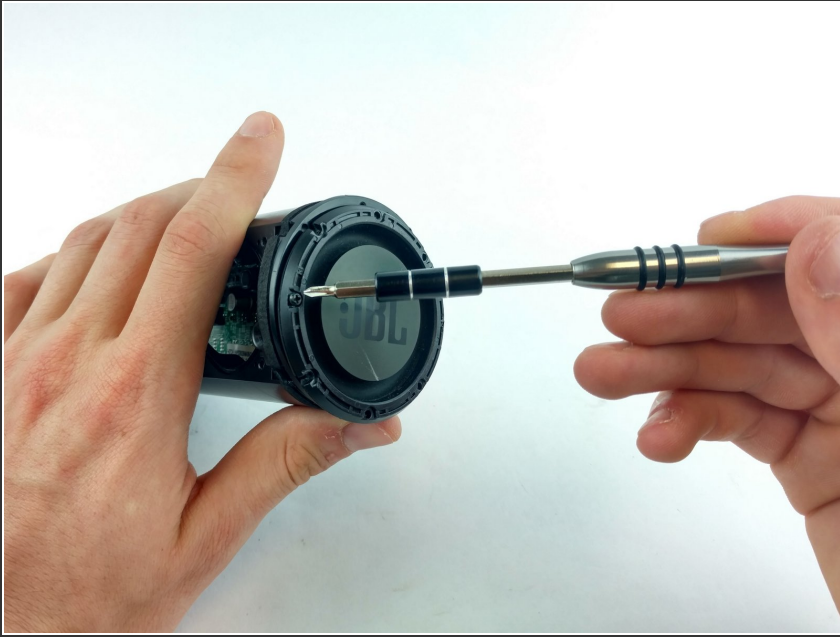
- Remove the plastic outer housing using your hands or a standard spudger.
- Important! Note the three alignment pins on the inner part of the housing. When reassembling, take special care to line these up and insert the pins into the receivers on the chassis prior to snapping the edges into place.

Step 2



- Use your hands to carefully remove the outer frame to expose the inner components of the speaker.

Step 3



- Go around the outer edge of the side passive driver with a screwdriver to remove the seven 8.9mm Phillips #00 screws from both sides of the device. Make sure to set the screws aside somewhere they won't get lost.

Step 4



- Remove the side passive driver.

To reassemble your device, follow these instructions in reverse order.