



Dell Latitude E6540 Hard Drive Replacement

If you wish to replace a failed hard drive or...

Written By: Nick



INTRODUCTION

If you wish to replace a failed hard drive or upgrade it to a larger drive or SSD, this guide will show you how to change the drive on the system.

Guide notes

- This guide does not cover OS installation or backups. This is something you will need to figure out how to do.
- If your system has a HDP on it, it may carry to your new hard drive. I recommend testing it with a junk drive first (if available), just to be sure.
- You will need to figure out how to get install media for your particular system. If you wish to reinstall Windows, you can use the black Dell DVD or your custom media, if you made this when you purchased the system. If you have neither available, Dell will send you one set of media for your system, if it has not been previously requested. If this is the case, you can find these DVD's online very easily.



TOOLS:

[64 Bit Driver Kit](#) (1)



PARTS:

[Hard drive bumpers \(7mm\)](#) (1)

DP/N: TYR75

[Hard drive bumpers \(9.5mm\)](#) (1)

DP/N: K9YXH/JJFXW

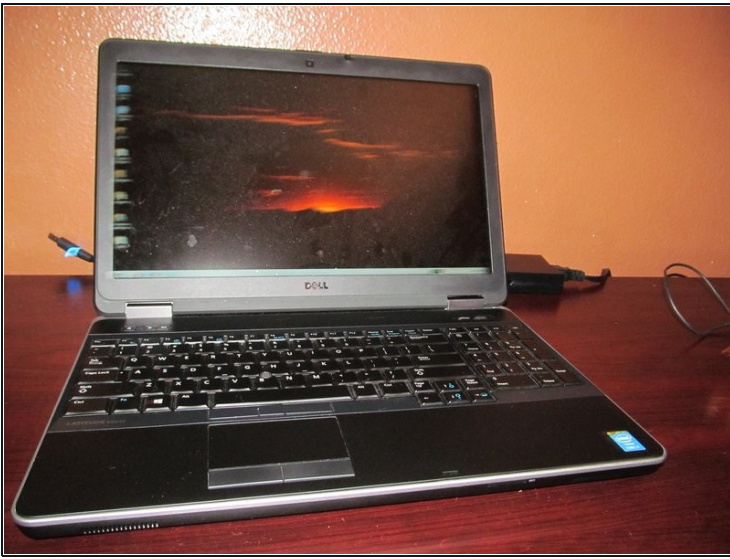
[Hard drive clip](#) (1)

DP/N: TYR75 - cannot interchange E6440 and E6540 clips.

[250 GB SSD](#) (1)

[500 GB SSD](#) (1)

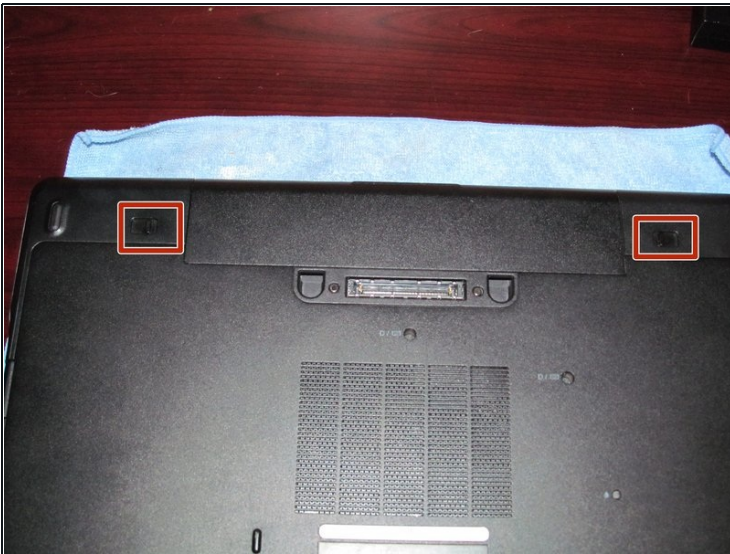
Step 1 — Hibernate your laptop



i It is possible to plug the laptop in to avoid hibernating the system.

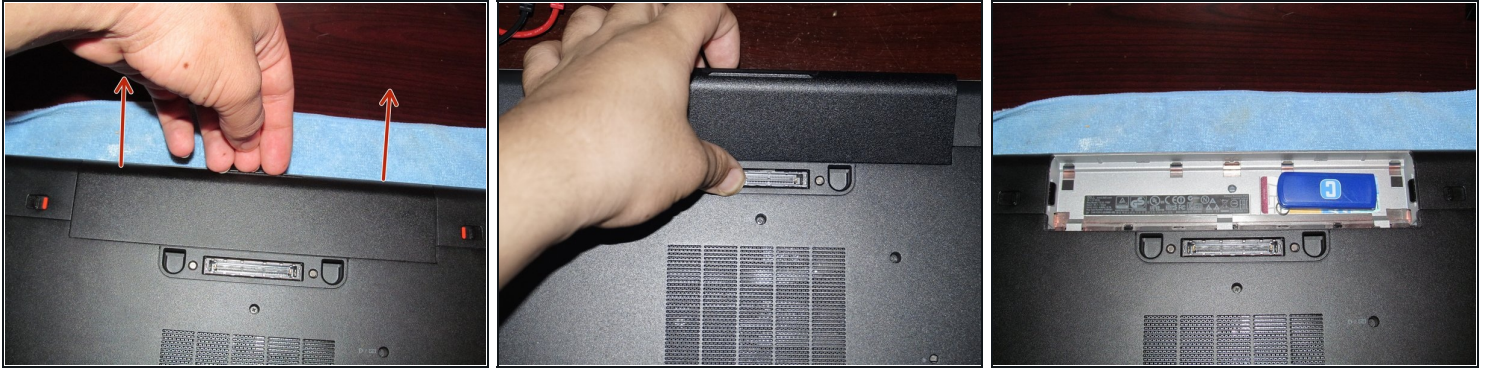
- Locate the Hibernate option in the Start menu. Let the system fully hibernate (or shut down) before removing the battery.

Step 2 — Unlock the battery



- Flip the laptop over and unlock the 2 battery tabs. The tabs will remain unlocked until the battery is removed.

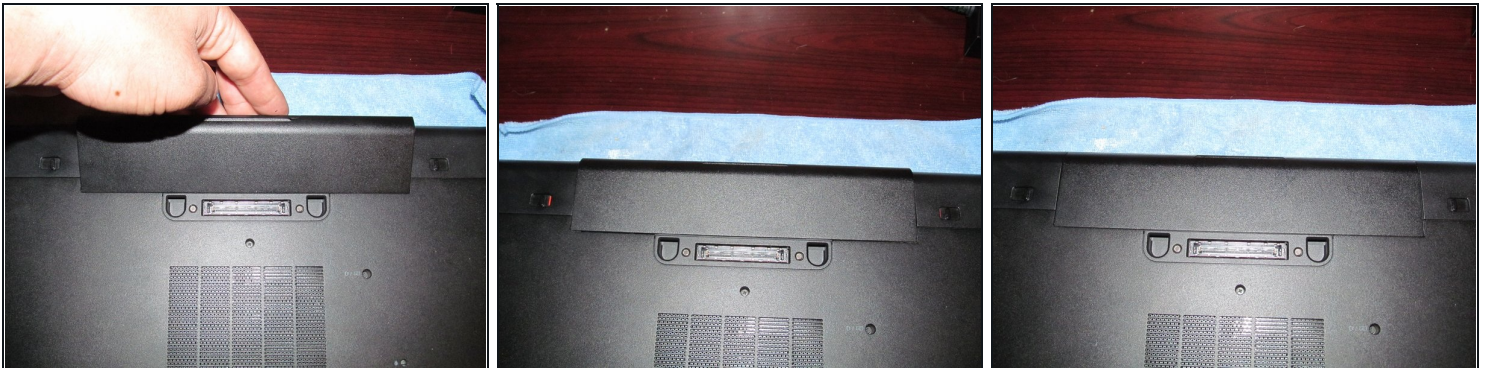
Step 3 — Remove the old battery



⚠ The "extended runtime" battery on this model will stick out a few inches by design. This cannot be avoided.

- Remove the battery. Pull the battery up from the back.

Step 4 — Install the new battery



⚠ This step does not apply if this guide is being used as a prerequisite.

- Align the battery with the tabs on the chassis. Drop the battery in place once lined up. If needed, use light pressure to seat it in the computer.

Step 5 — Plug your laptop in



⚠ This step does not apply if this guide is being used as a prerequisite.

- Turn the computer on and plug the charger in.

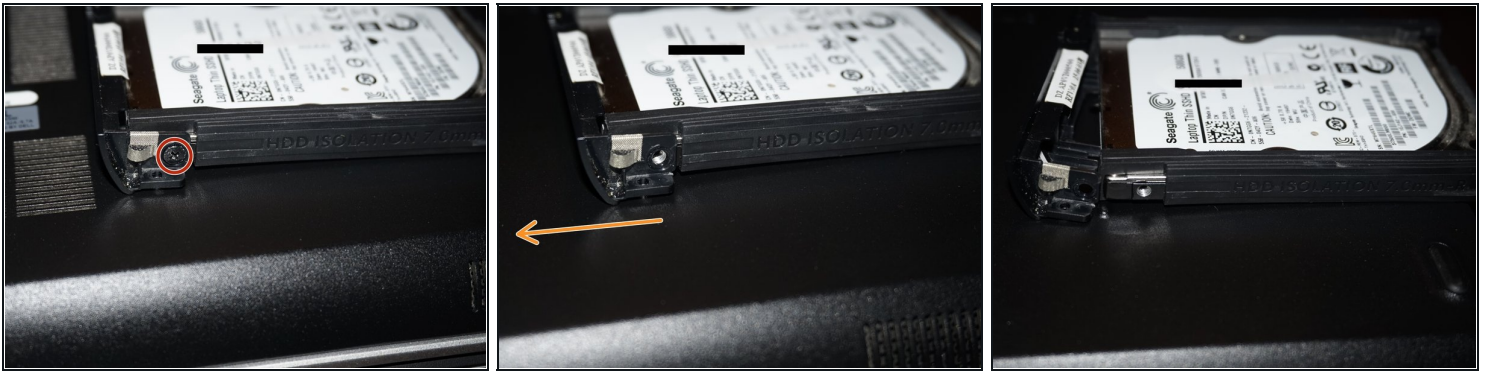
Step 6 — Remove the chassis screws



⚠ The screw marked in orange is directly screwed into the chassis. *This point WILL break if overtightened.*

- To remove the hard drive from the computer, remove the **two** screws. Use the **Phillips #1** bit.

Step 7 — Remove the drive clip



i This step is not required if you are moving the drive to an identical Dell computer.

- To remove the drive clip, remove the **Phillips #0** screw holding the hard drive to the clip.
- Once the screw is removed, remove the drive starting from the side with the screw.
- Remove the drive from the right side by removing the drive from the alignment pin.

Step 8 — Remove the rubber bumpers



i The bumpers are held on with double sided tape. This does not have to be replaced.

- Once the drive is removed from the clip, remove the rubber bumpers. Transfer them to your new drive.

To reassemble your device, follow these instructions in reverse order.