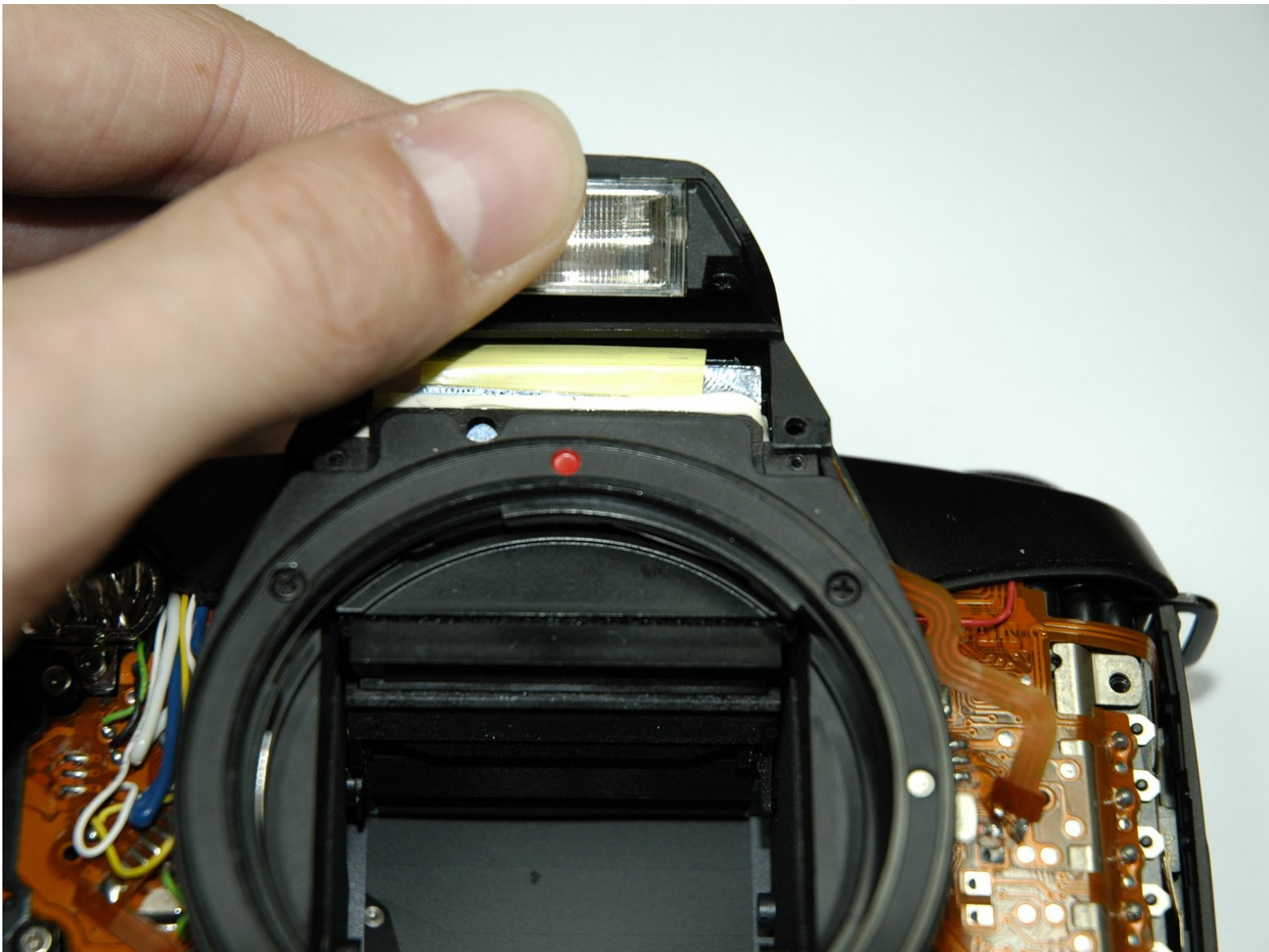




Canon EOS Rebel G Flash Replacement

Accessing components of the flash mechanism and bulb.

Written By: Zach



INTRODUCTION

This guide will instruct you how to install the flash on your camera.



TOOLS:

- [Precision Utility Knife](#) (1)
 - [Phillips #00 Screwdriver](#) (1)
 - [Soldering Workstation](#) (1)
 - [Spudger](#) (1)
-

Step 1 — Front Panel



- Using a #00 Phillips screw driver, remove three 4.4 mm Phillips screws as indicated by the red circles.

Step 2



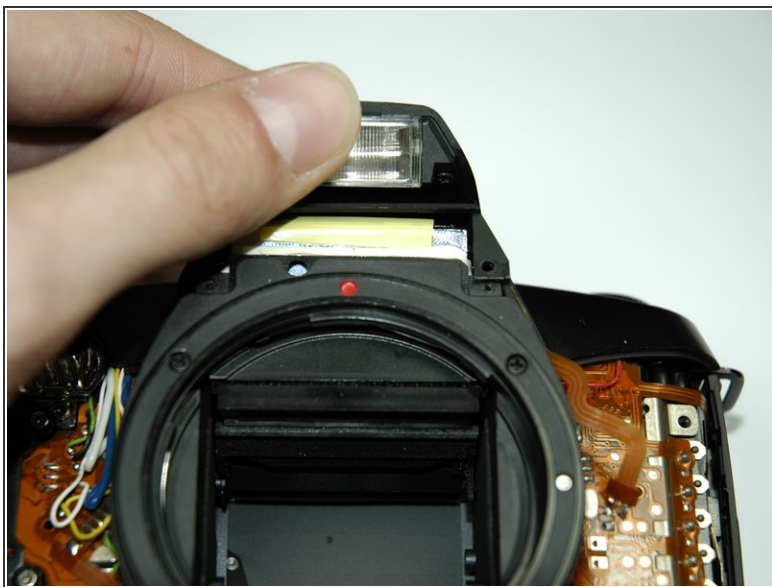
- Using your finger, peel back the textured grip so the components are separated.

Step 3



- Using the flat end of a spudger, loosen the connection between the front panel and the device.
- Remove the front panel using your hands.

Step 4 — Flash



- Pop the flash up with your thumb

Step 5



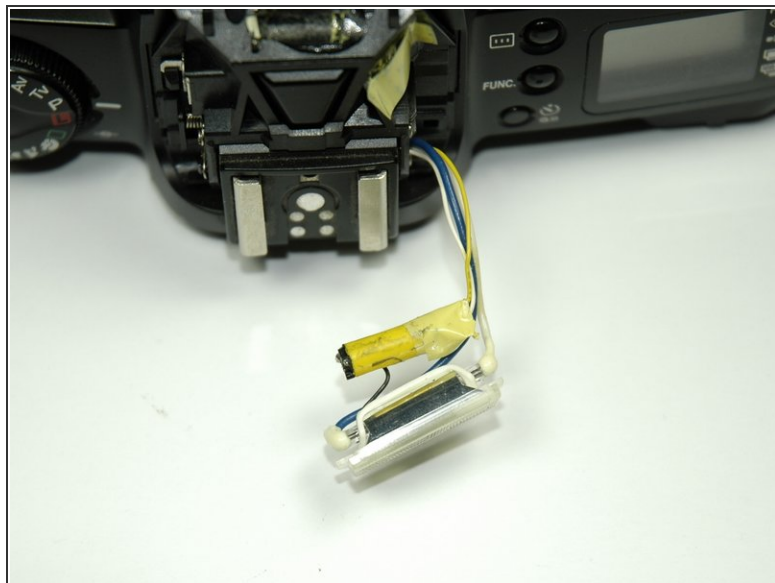
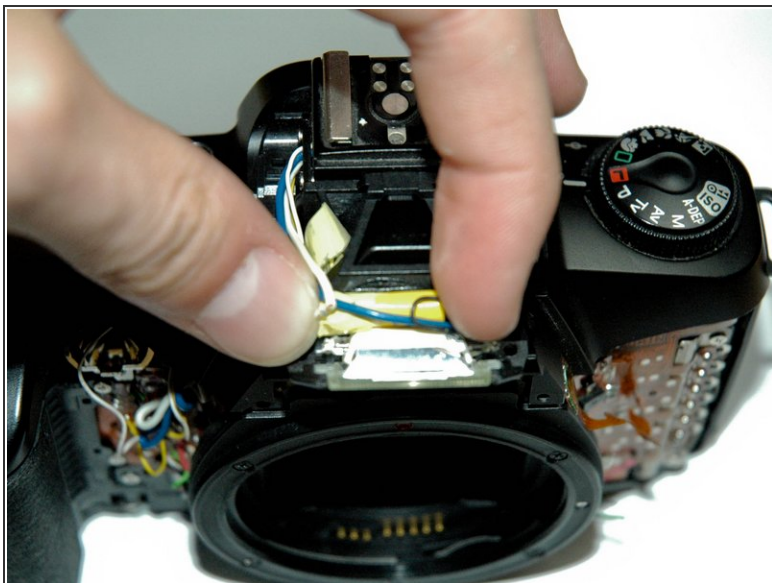
- Unscrew the two screws on the front of the flash near the bulb cover.

Step 6



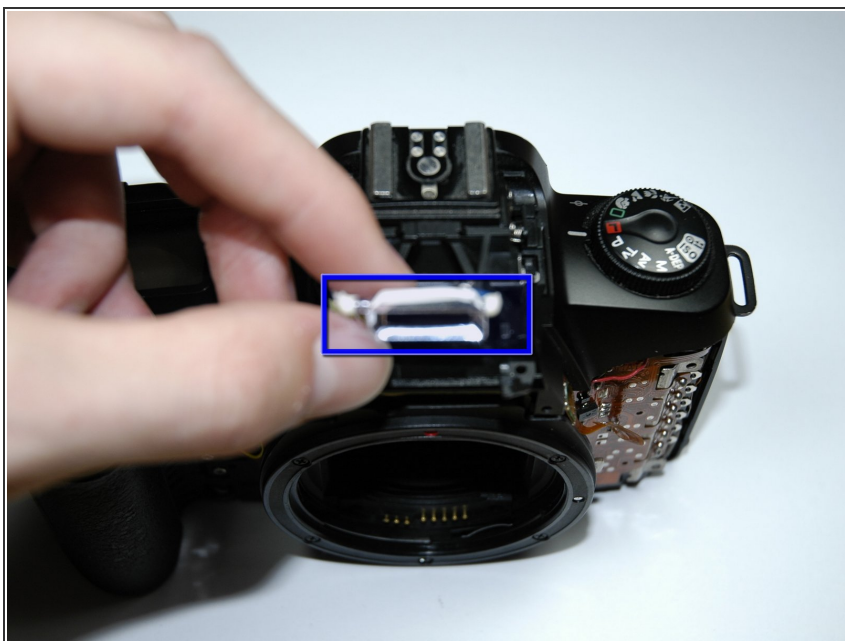
- Close the flash.
- Lift the flash cover off.

Step 7



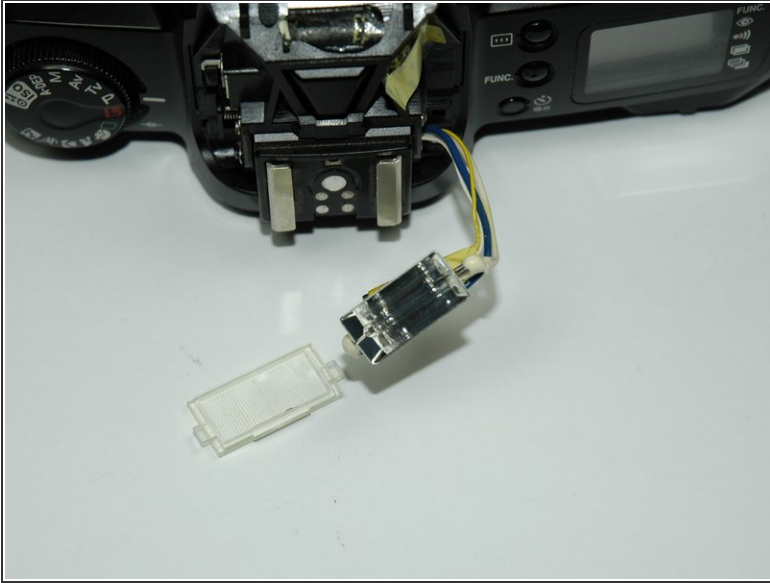
- Pull off yellow capacitor from flash wiring.

Step 8



- Remove white cocking with a razor blade, and then unsolder connection.

Step 9



- Remove the flash cover to access the flash bulb.
- After wires are unsoldered, slide flash bulb out from housing.

To reassemble your device, follow these instructions in reverse order.