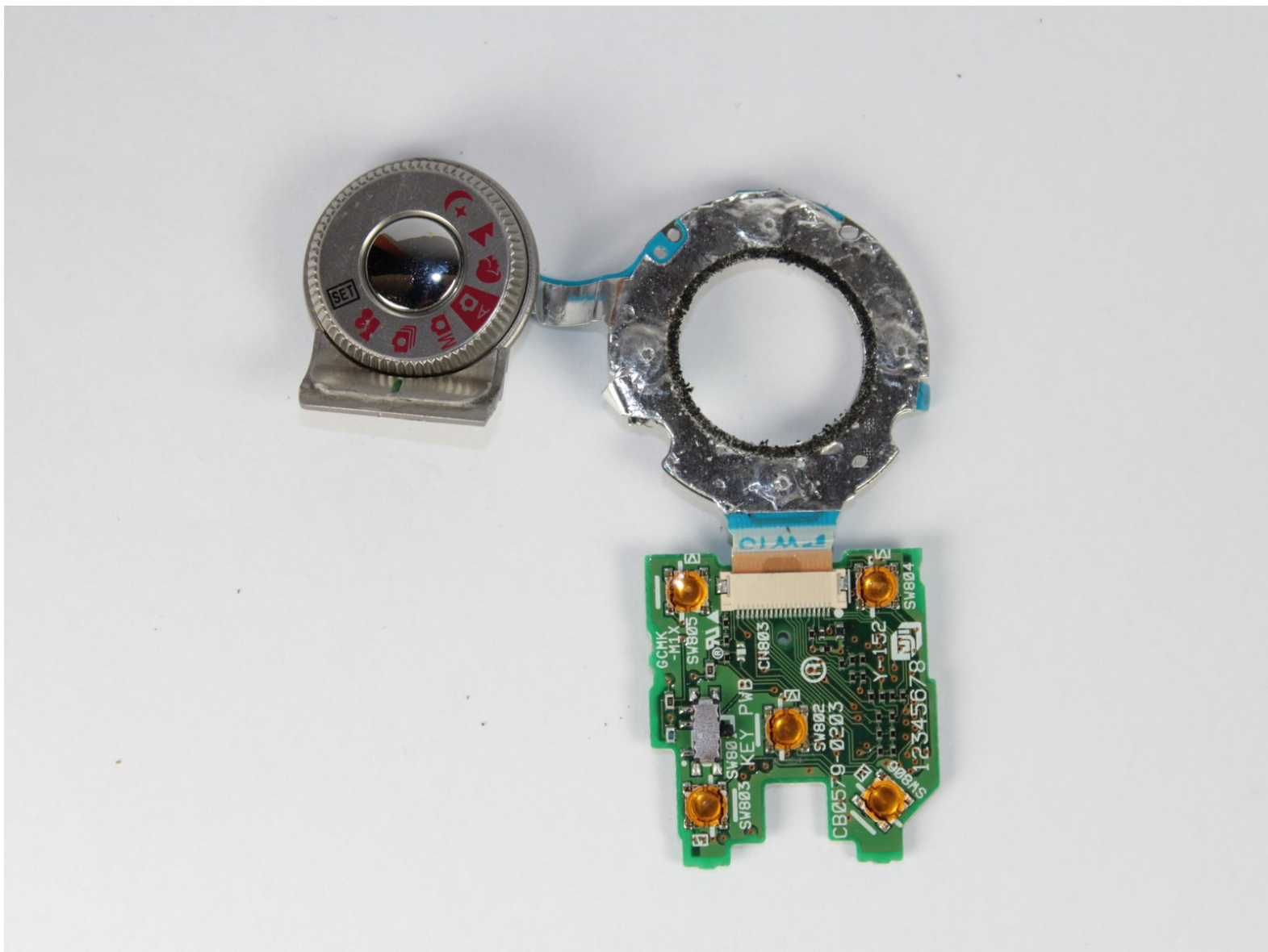




Fujifilm FinePix 4700 Zoom Button Circuit Board Replacement

This guide will help you install and remove the button circuit board.

Written By: Sarah Daliva



INTRODUCTION

In order to access the button circuit board, the back cover of the camera needs to first be removed.



TOOLS:

- [Phillips #00 Screwdriver](#) (1)
 - [Spudger](#) (1)
-

Step 1 — Back Cover



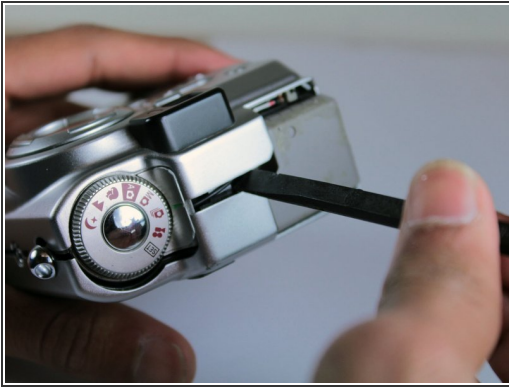
- Use the Phillips #00 screwdriver to remove the 7 screws on the sides of the camera:
 - Four 3.95mm Phillips screws located on the bottom of the camera
 - Two 3.95mm Phillips screws located on the right side of the camera
 - One 3.95mm Phillips screw located on the left side of the camera

Step 2



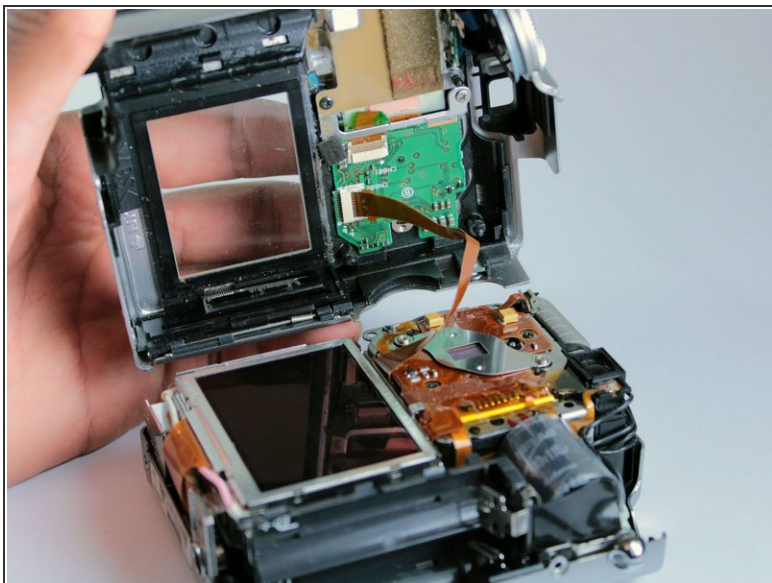
- Slide open the battery compartment cover with your thumb.

Step 3



- Wedge the edge of the spudger between the front and back case, near the corner of the flash.
- Carefully run the spudger along the right edge of the camera, creating an opening.
- Insert the spudger into the left side of the camera, above the screw hole. Then carefully run it along this edge.

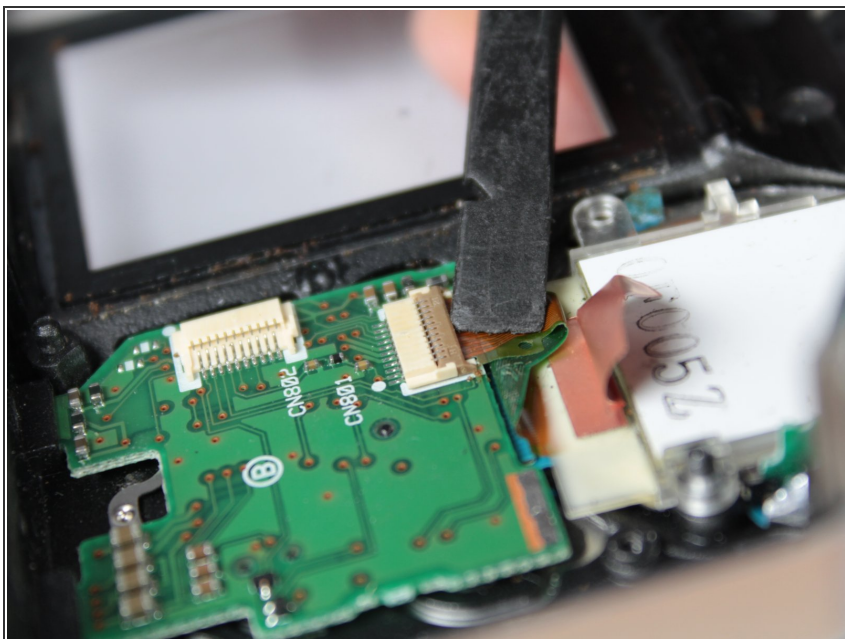
Step 4



! Watch out for the orange ribbon that is still attached to the back cover when you lift it up. It is very delicate and might rip.

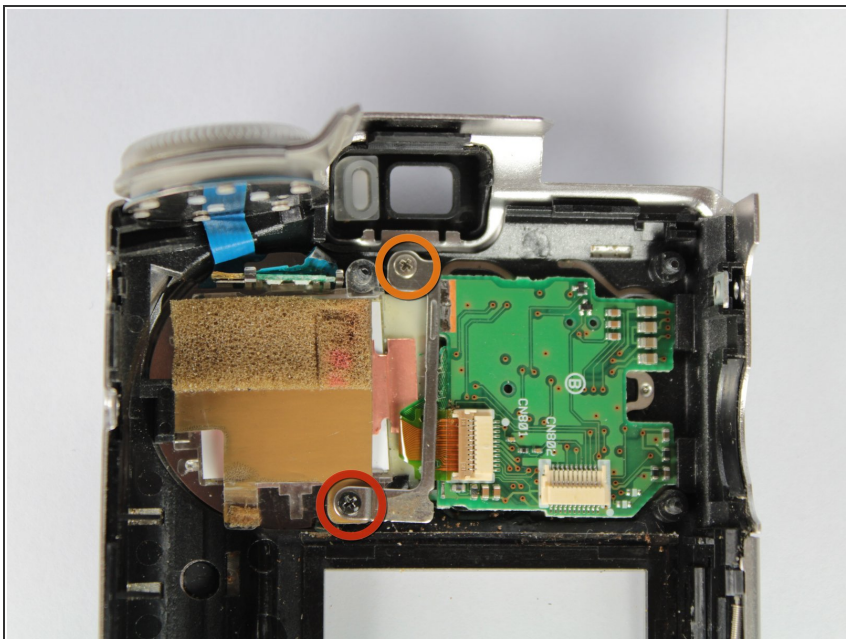
- Slowly lift the back cover straight up, lightly jiggling it if necessary.
- Remove the battery compartment cover.

Step 5



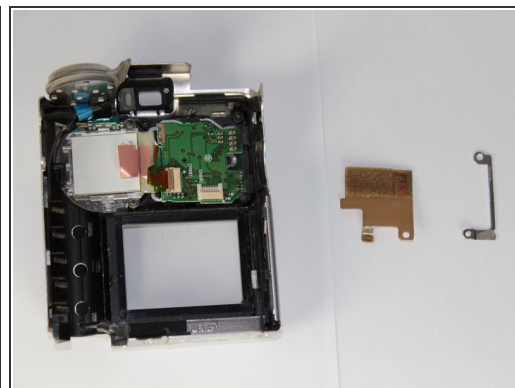
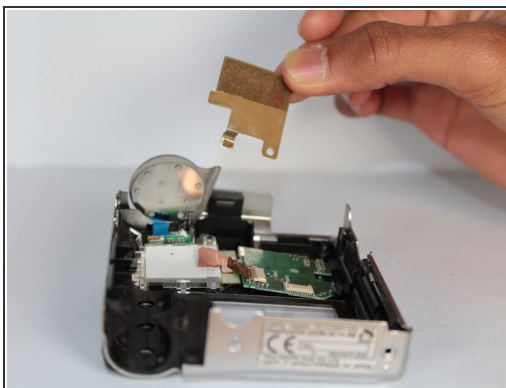
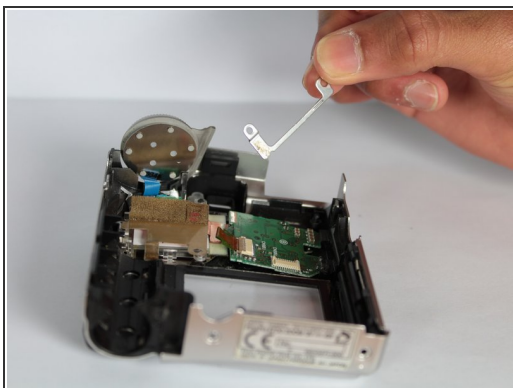
- Gently insert the spudger under the clip holding the orange ribbon. The clip should lift up and the ribbon will slide out.
- This step will free the back cover from the rest of the camera.

Step 6 — Button Circuit Board



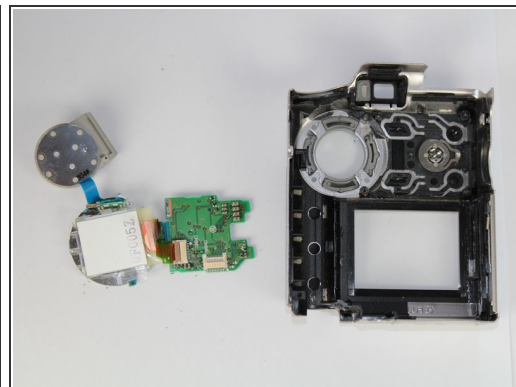
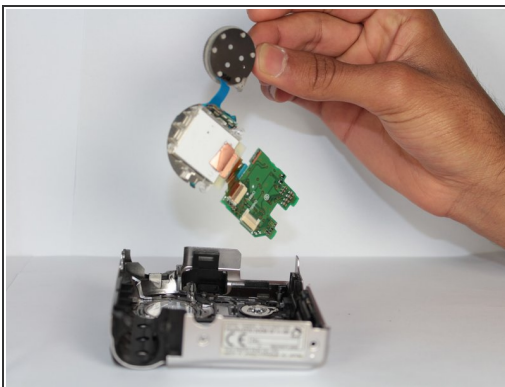
- Use the Phillips #00 screwdriver to remove the two screws on the bracket holding the right side of the button circuit board.
 - One 3.85mm Phillips #00 screw
 - One 3.4mm Phillips #00 screw

Step 7



- Use your fingers to remove the metal bracket and brown colored film.

Step 8



- Use the spudger to pry up the clear plastic tab.
- Pull the button receiver, button circuit board, and swivel button out as a single unit.
- ⓘ Jiggle the swivel button out of place if necessary.

To reassemble your device, follow these instructions in reverse order.