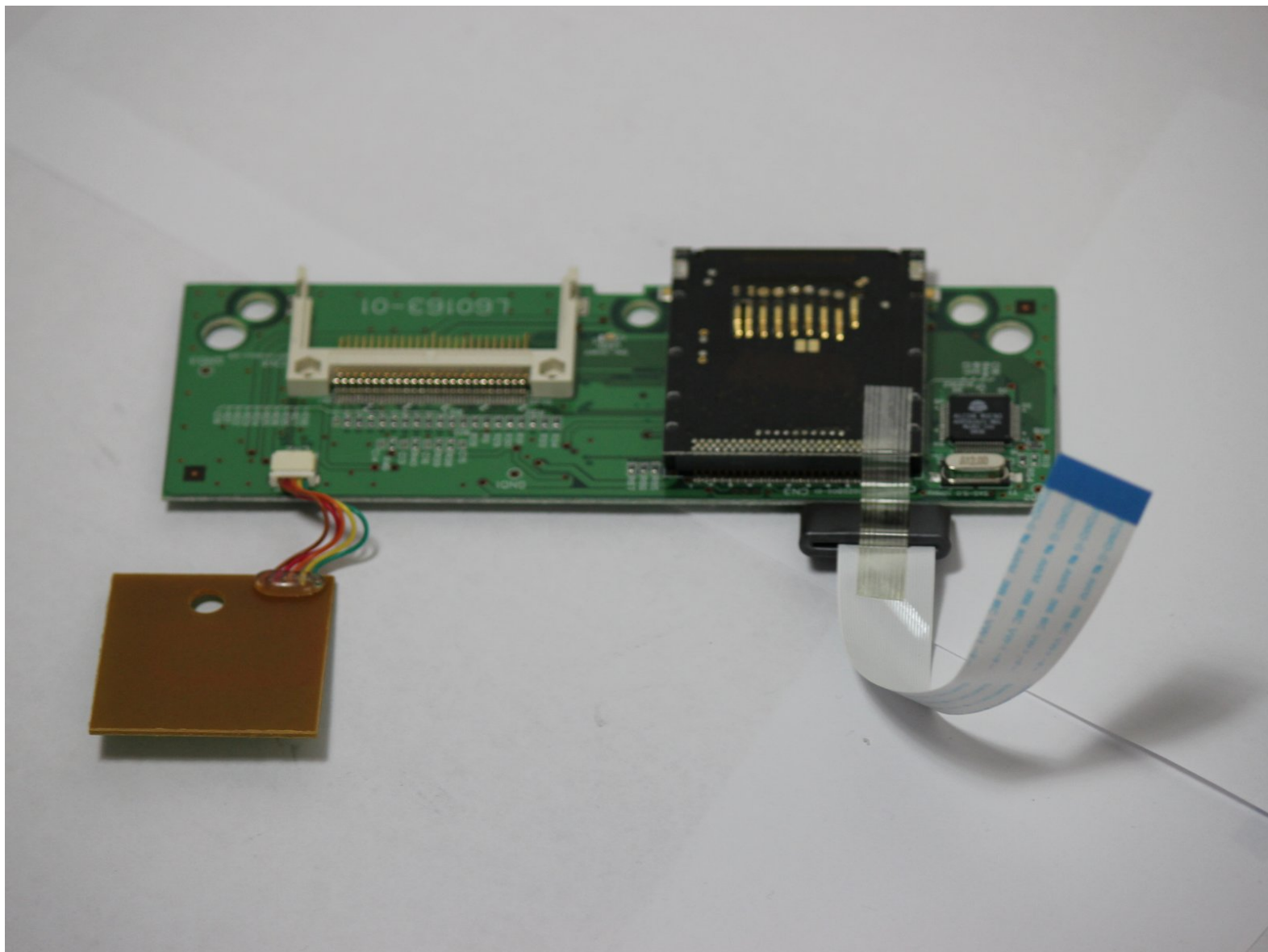




Dell Photo Printer 540 Power Switch Replacement

If the photo printer will not turn on, this repair guide will teach you how to replace the power switch.

Written By: Jonathan Mintz





TOOLS:

- [Phillips #1 Screwdriver](#) (1)
 - [Phillips #2 Screwdriver](#) (1)
-

Step 1 — Case



- Rotate the photo printer so that the bottom of the case faces upward.

Step 2



- Use a Phillips #2 screwdriver to remove the three 5.65 mm screws on the bottom panel of the case in a counter-clockwise fashion.

Step 3



- Rotate the device so that it is upright again. Under the LCD Panel there is a 9.62 mm screw, unscrew using a Phillips #2 screwdriver.

Step 4



- Remove the back panel of the case by pulling directly back.
- ⓘ Some carefully applied force may be required to remove this part.

Step 5




- Rotate the photo printer so that the bottom panel faces up once again. Now lift off the bottom panel of the case to access all internal components.

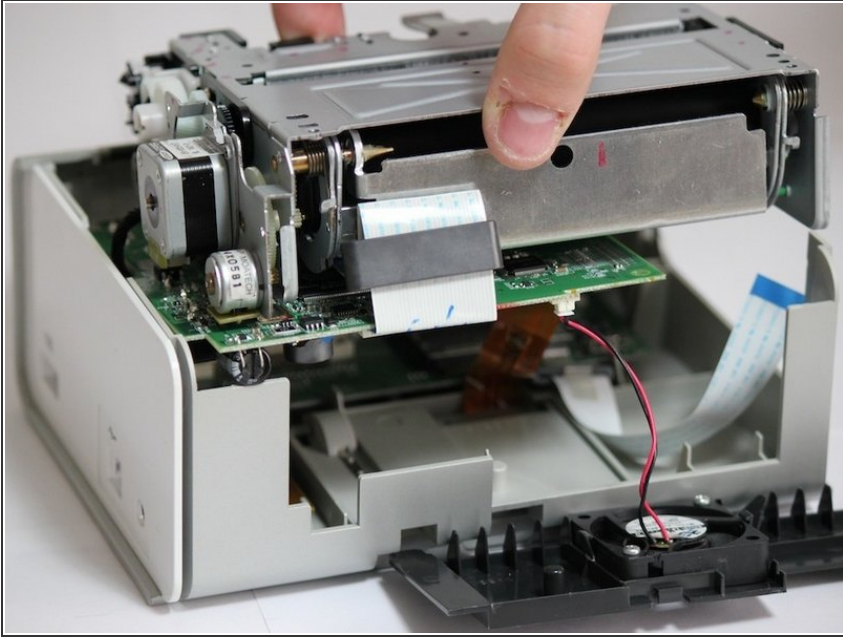
Step 6



- Finally remove the side panel with the ink-cartridge door by holding the right side and pulling backwards with the left side.

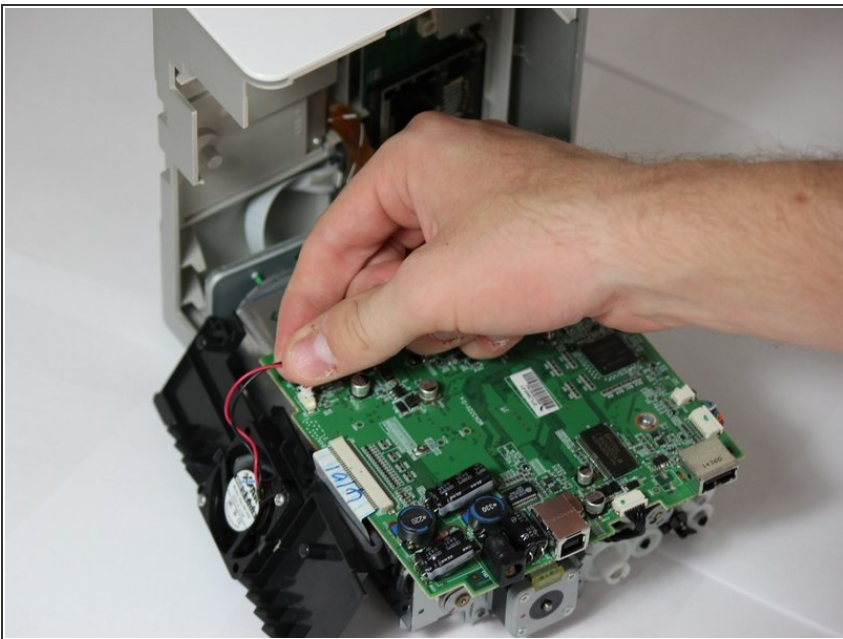
 Caution! The side panel is held in by tabs; don't break these.

Step 7 — Cooling Fan



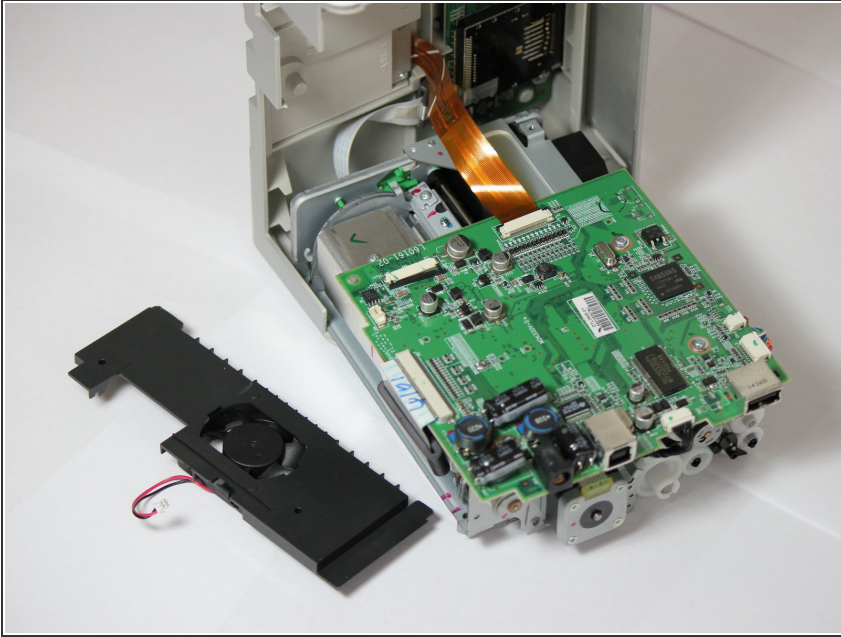
- Carefully remove the inner components of the device by lifting the inner components up and out of the casing.

Step 8



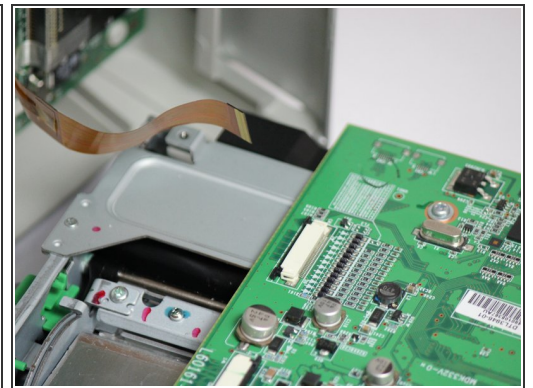
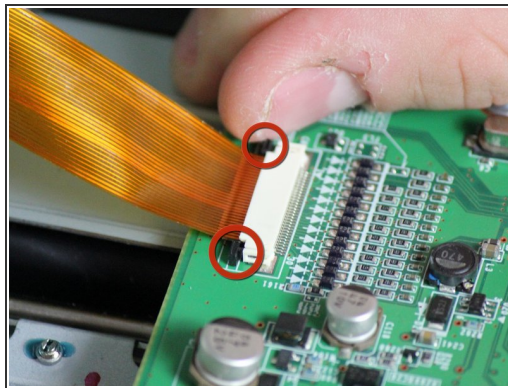
- Locate the red and black cable that is connecting the fan to the top of the logic board.

Step 9



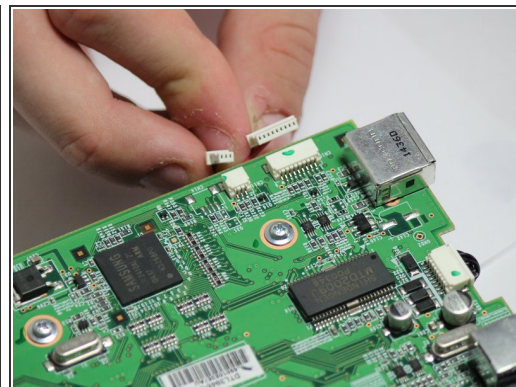
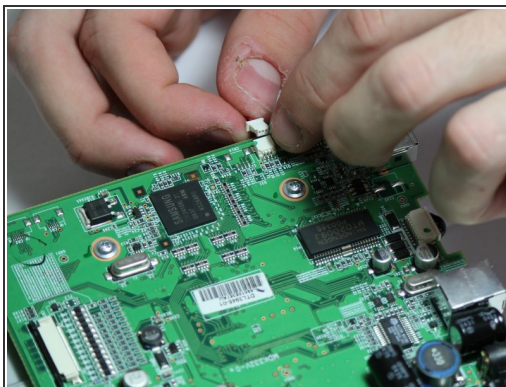
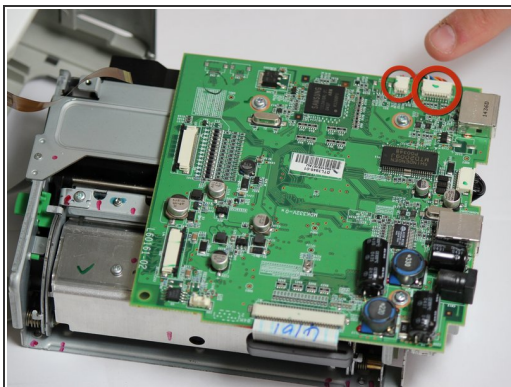
- Carefully, remove the red and black cable from the logic board by pulling gently in order to isolate the cooling fan from the device.

Step 10 — Mother Board



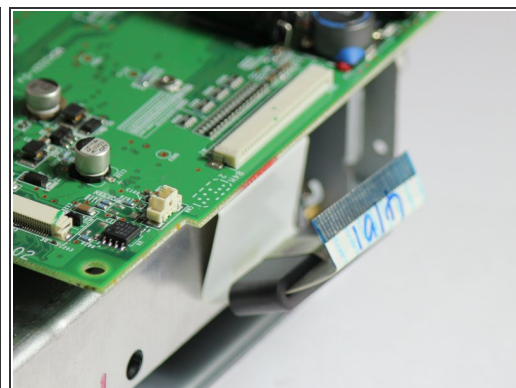
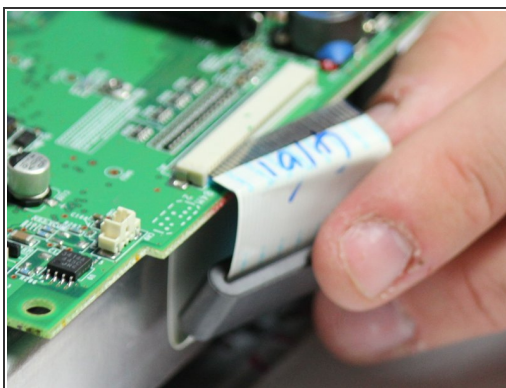
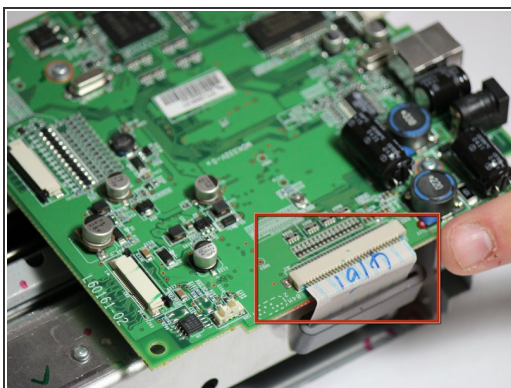
- Locate the data ribbon that connects the LCD panel to the mother board.
- Loosen the fasteners next to the ribbon by carefully pushing them away from the white ribbon holder.
- ⓘ Once the fasteners are loosened the ribbon should easily slide away from the motherboard.

Step 11



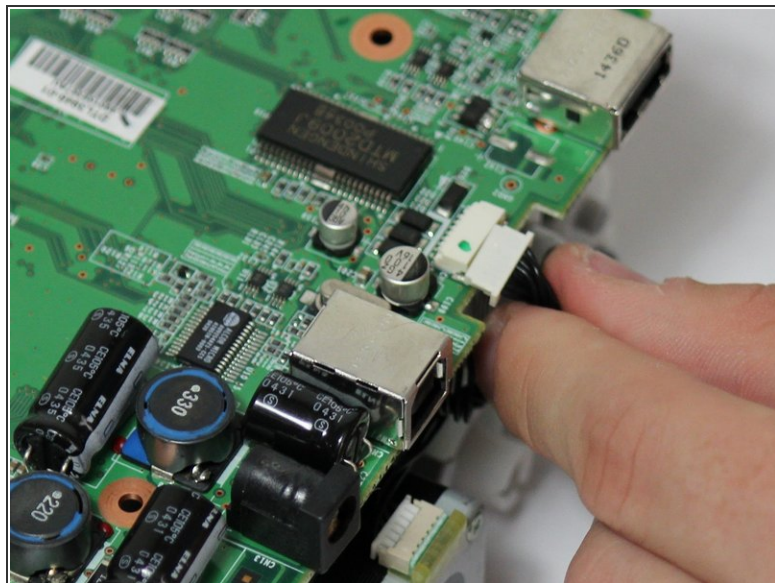
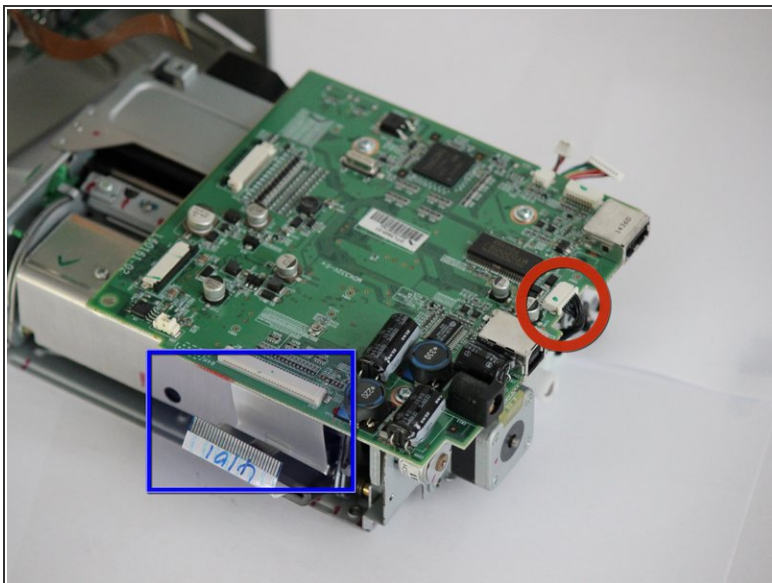
- Locate the clips with multi-colored wires that connect the motherboard to the printing unit.
- ⓘ Disconnect both of them by gently pulling them away from the motherboard.

Step 12



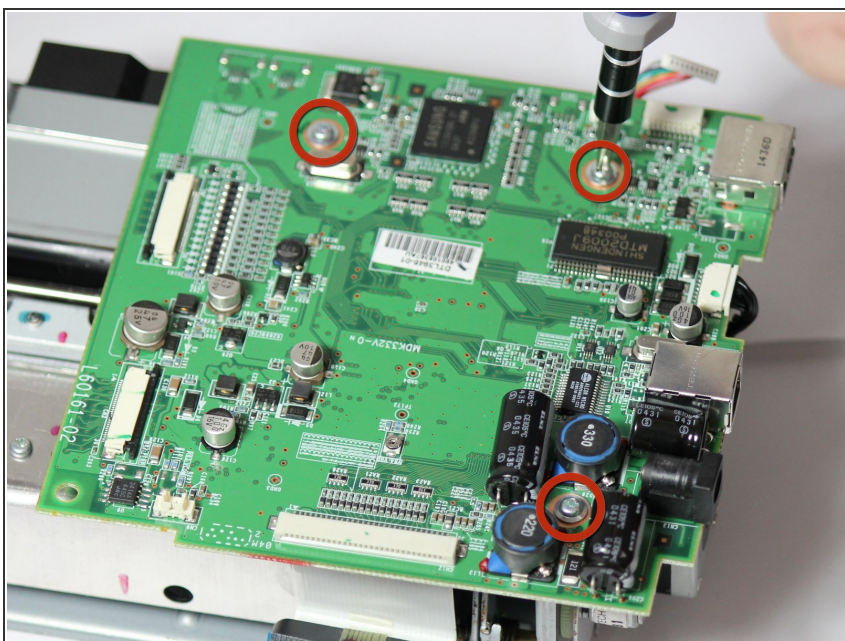
- Locate the white ribbon that connects the motherboard to the printing feed.
- Disconnect the ribbon by gently pulling the ribbon away from the motherboard.

Step 13



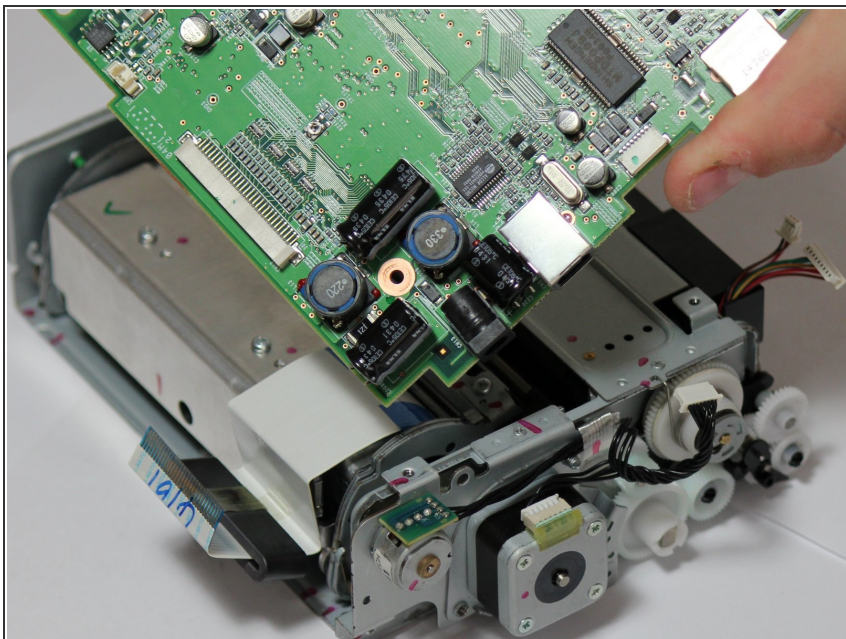
- The motherboard has changed orientation. Notice the new orientation based on the white data ribbon we removed in the previous step.
- Locate the black data ribbon that connects the motherboard to the printing motors.
- Disconnect it from the logic board, by gently pulling the wire away from the motherboard.

Step 14



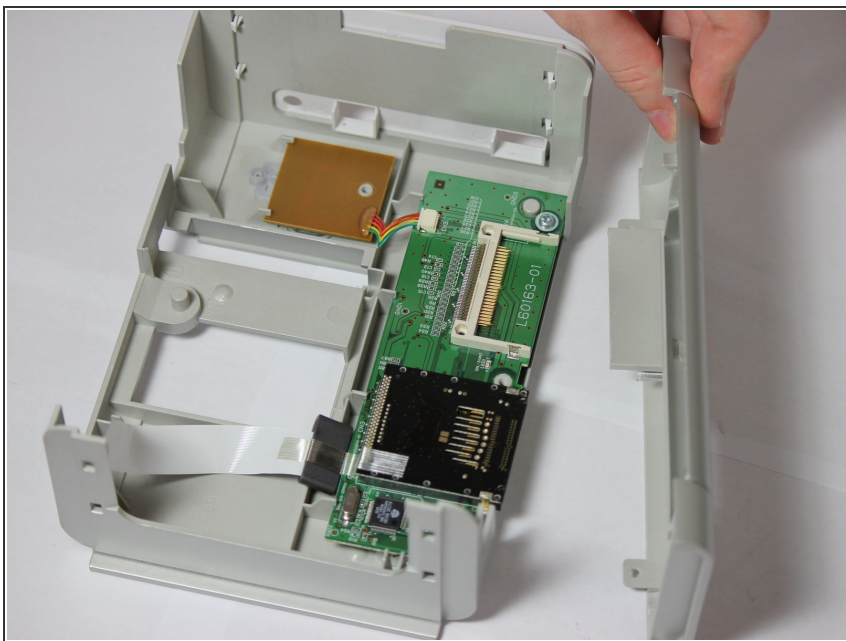
- Now unscrew the three screws 7.89mm (counter-clockwise) using a Phillips #1 screwdriver.

Step 15



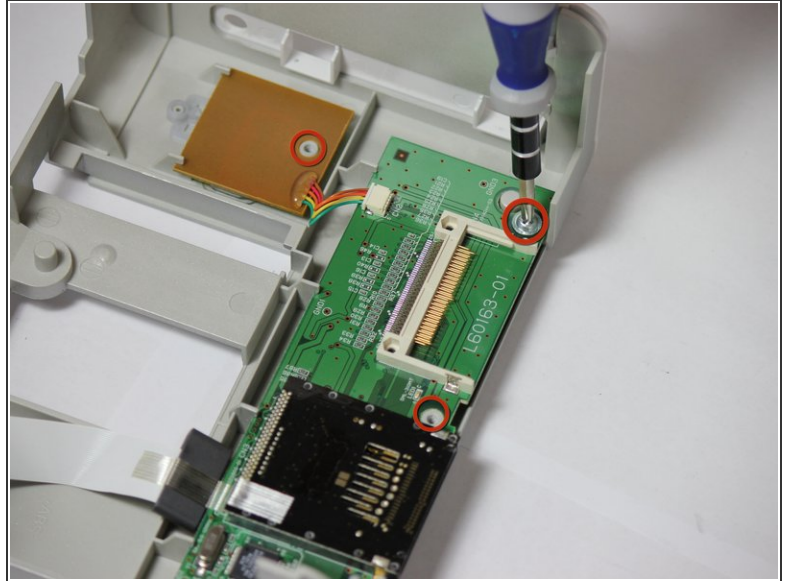
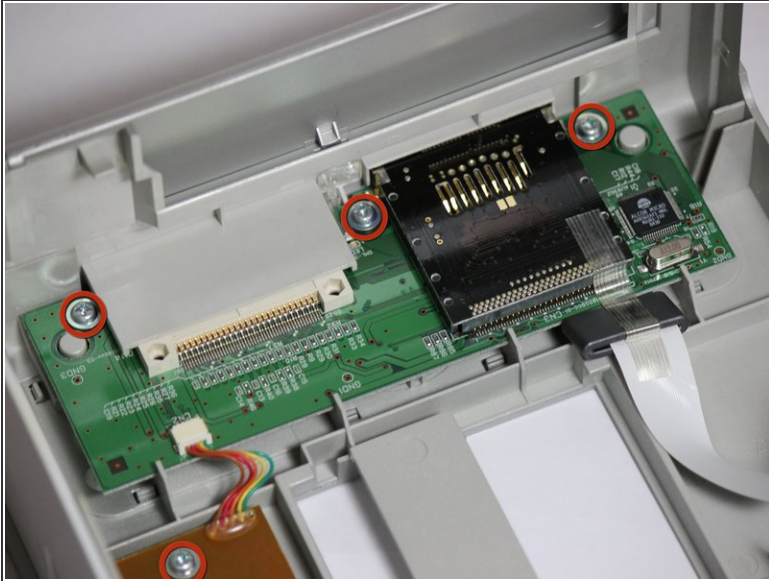
- Once screws and ribbons are disconnected, you can pull mother board away from the printing unit.

Step 16 — Removal of the Control Panel Motherboard



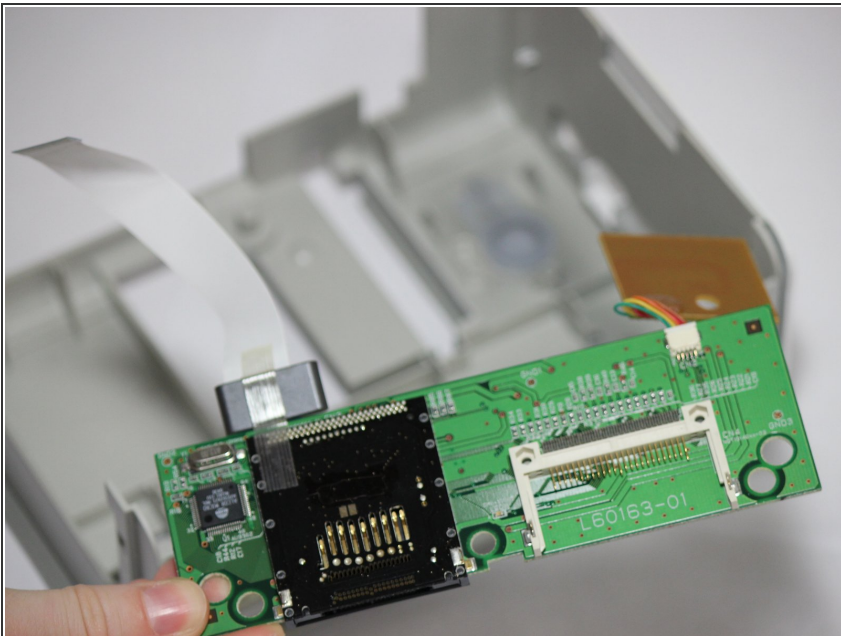
- Gain access to the bottom of the top case with a thin horizontal control panel motherboard attached to the bottom.
- Remove the front panel.
 - The dell top casing should now only have two sides.

Step 17



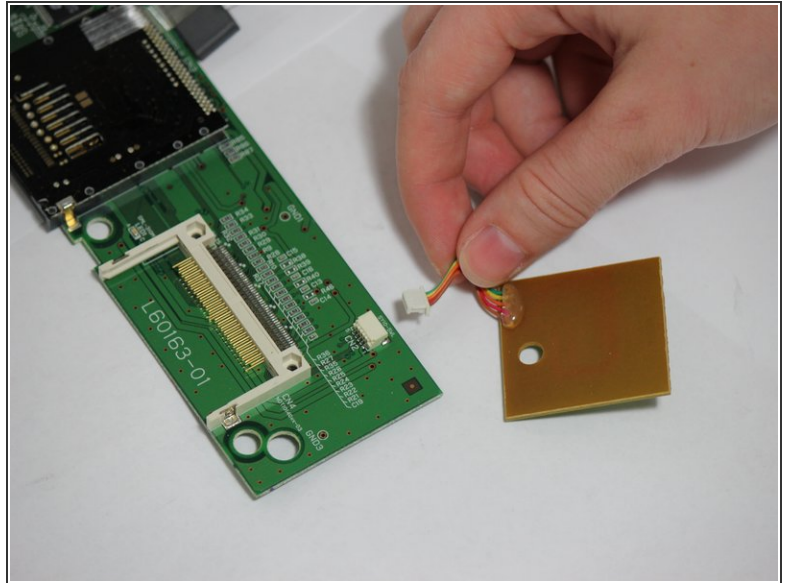
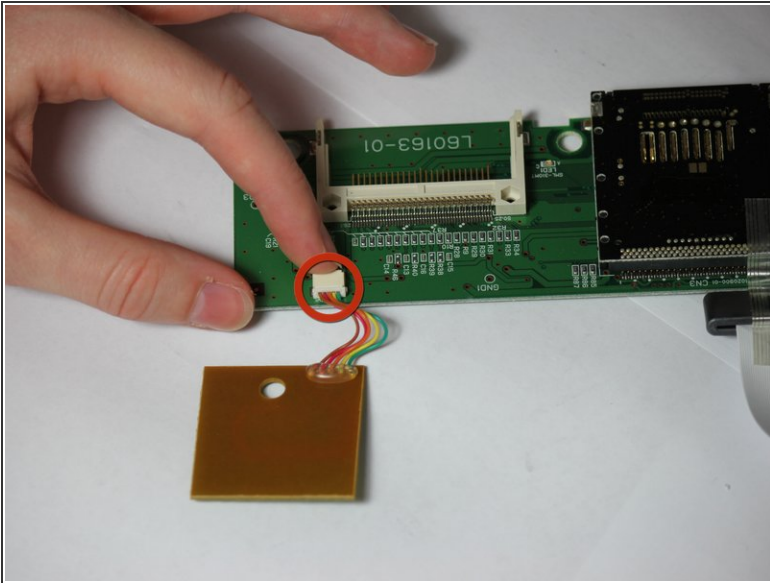
- Locate the four 7.85 mm screws attaching the control panel motherboard to the top face casing.
- Use a Phillips Head #1 screw driver to remove the four highlighted screws.
- NOTE: Make sure removal of front face plate is completed.

Step 18



- Gently lift the horizontal control panel motherboard and square power switch board.
- Completely detach the motherboard from the face casing.
- NOTE: Leave the power switch control attached to the main control panel motherboard.

Step 19 — Power Switch



- Locate the multi-colored cable that connects the power switch to the control panel motherboard.
- Detach the cable, power switch is now accessible.