



MSI GE72 6QF Apache Pro Hard Drive Replacement

A step by step guide to replace the hard drive in your MSI GE72 6QF Apache Pro

Written By: Tanmay Kumar



INTRODUCTION

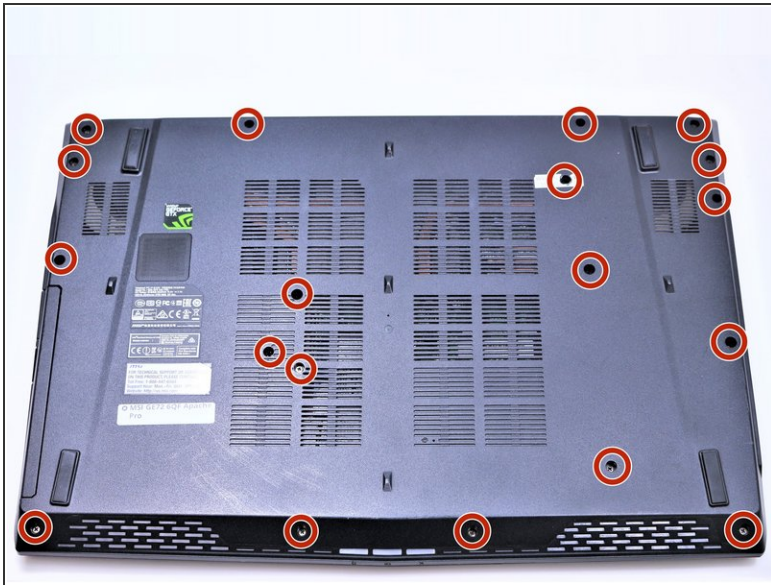
This guide will teach you how to replace the hard drive in you MSI GE72 6QF Apache Pro



TOOLS:

- [Phillips #1 Screwdriver](#) (1)
-

Step 1 — Battery



⚠ Make sure the laptop is off and unplugged (not charging).

- With the laptop closed and upside down, unscrew the nineteen 5.5mm Phillips #1 screws that keep the back cover in place.

Step 2



- Slide the optical drive out of the laptop.

Step 3



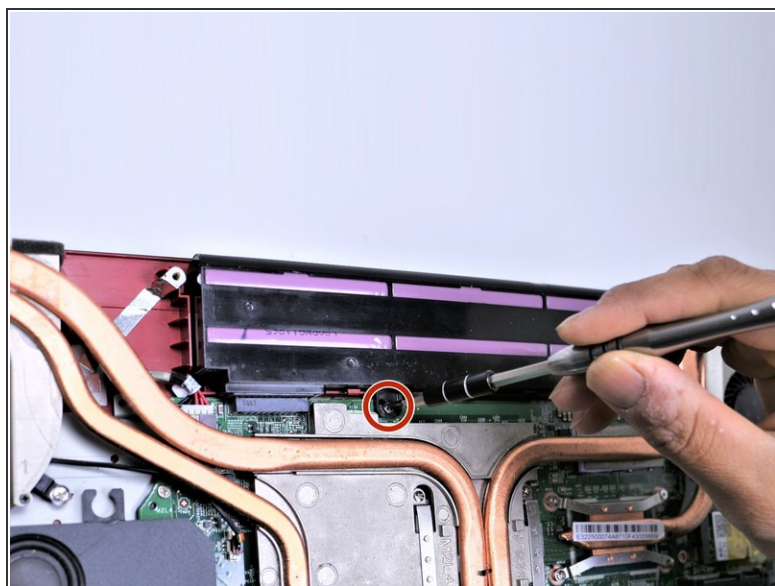
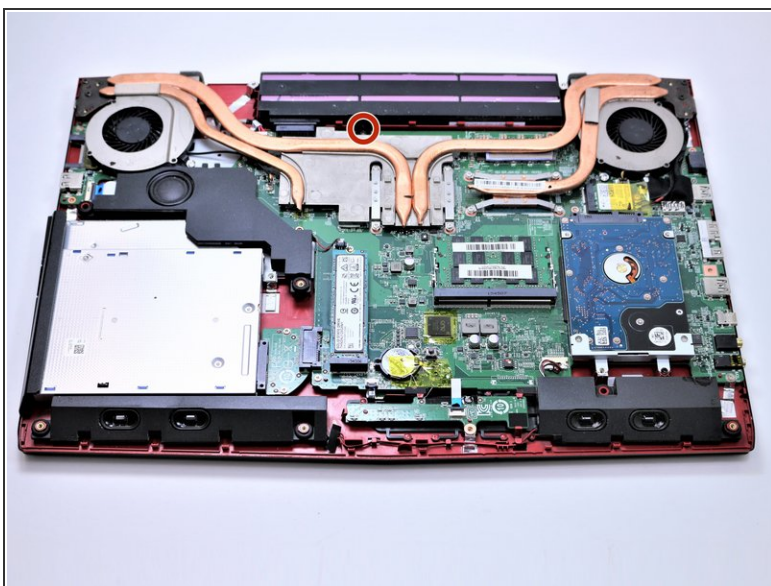
- Use a Phillips screwdriver to remove the three screws along the edge of the optical drive bay.

Step 4



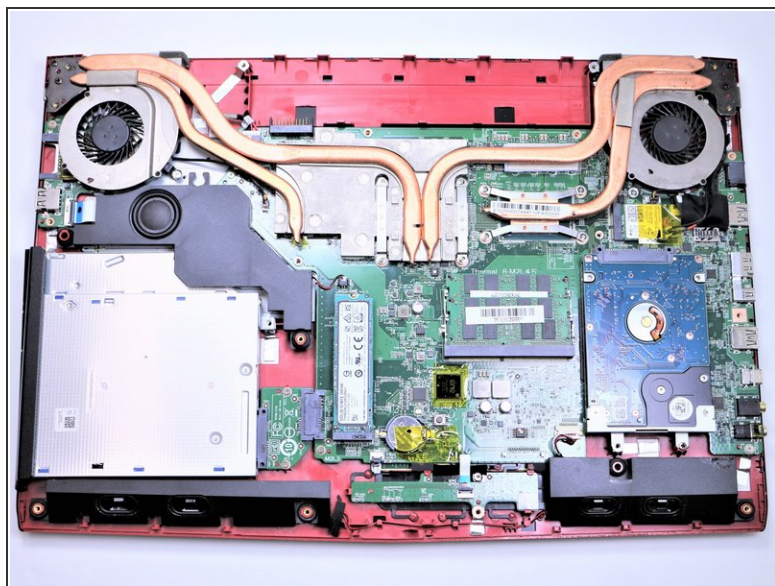
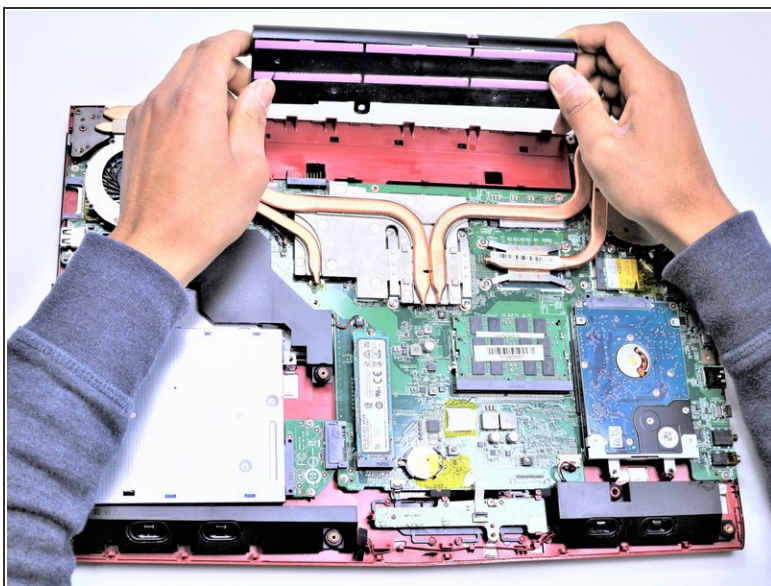
- Using your fingers, gently loosen the edges of all four sides of the back cover.
- Gently pull off the back cover.

Step 5



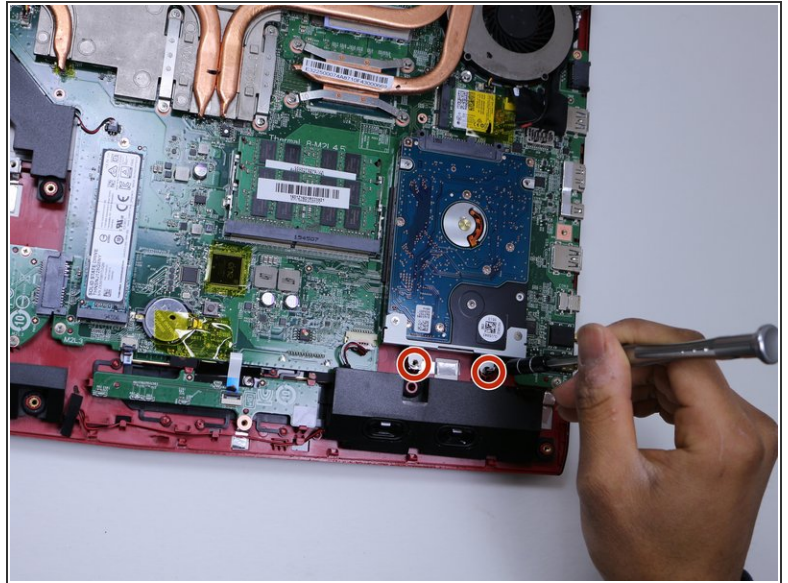
- Unscrew the single 5.5mm Phillips #1 screw keeping the battery secure.

Step 6



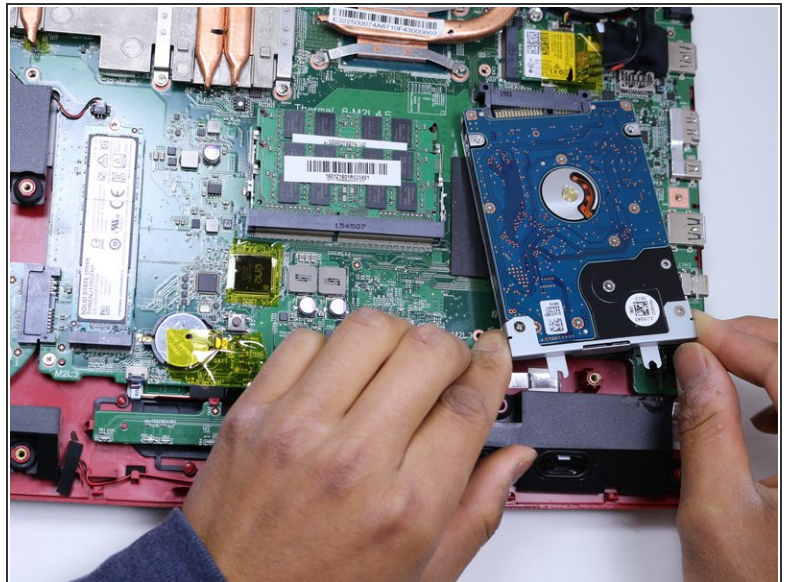
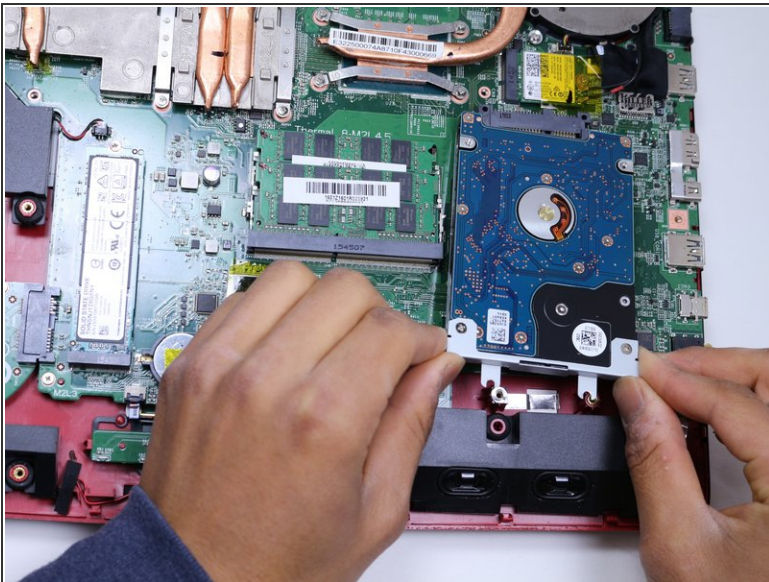
- Grab the battery with your fingers and gently pull it up and away from the rest of the laptop.

Step 7 — Hard Drive



- Remove the two 5.5mm screws with the Phillips #1 screwdriver.

Step 8



- Gently pull out the hard drive by wiggling it from right to left with your hands until it is removed.

To reassemble your device, follow these instructions in reverse order.