



Lenovo N22 Chromebook Motherboard Replacement

Replacement of the Lenovo N22 Chromebook Motherboard.

Written By: Jackson Tucker



INTRODUCTION

Through this guide, you will be able to remove and replace the chromebook's motherboard, which includes the RAM and SSD. Problems associated with these two parts will require the replacement of the motherboard to repair.



TOOLS:

- [Phillips #1 Screwdriver](#) (1)
 - [iFixit Opening Tools](#) (1)
 - [Large Needle Nose Pliers](#) (1)
-

Step 1 — Keyboard



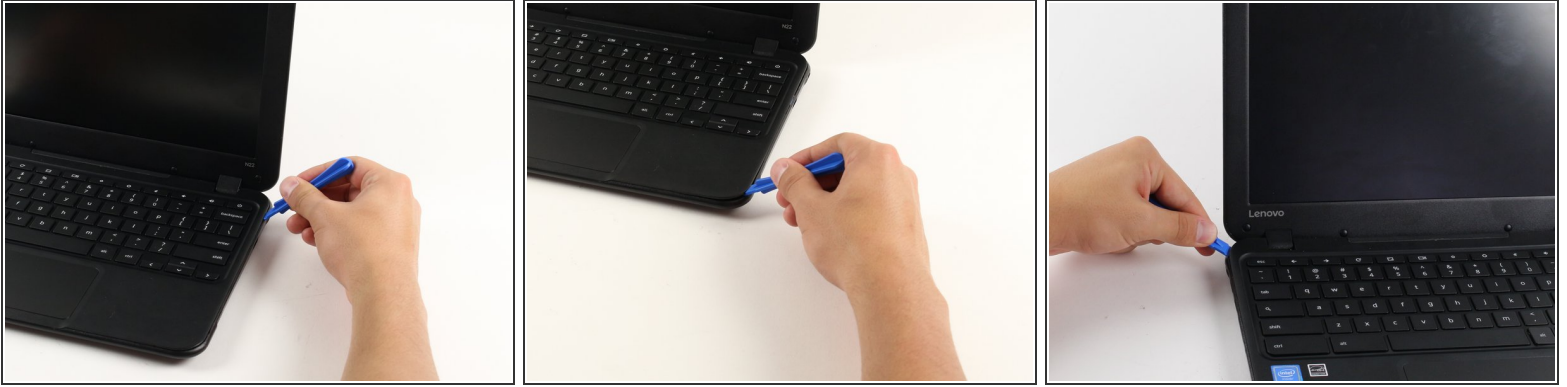
Power down the Chromebook before starting the repair.



Opening the Chromebook voids the manufacturer warranty.

- Flip the Chromebook so that the bottom is facing up.
- Use a Phillips #1 screwdriver to remove the six 6.6 mm screws on the bottom.
- Use a spudger to remove each of the 4 rubber feet.
- Use a Phillips #1 screwdriver to remove the four additional screws under the rubber feet.

Step 2



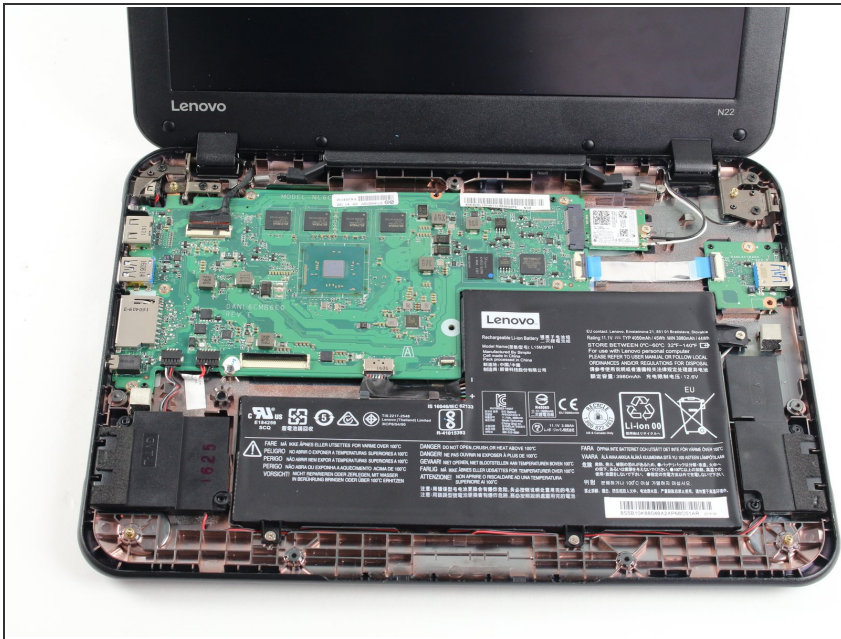
- Flip the Chromebook back over and open the screen.
 - Wedge the plastic opening tool between the keyboard and the bottom of the Chromebook.
 - Run the plastic opening tool along the seam between the keyboard and the bottom of the Chromebook until the keyboard moves freely. Several tabs will pop out.
- i** It is normal for the tabs to make a loud click when released. The corner tabs will be harder to release than the others and will make a louder click.

Step 3



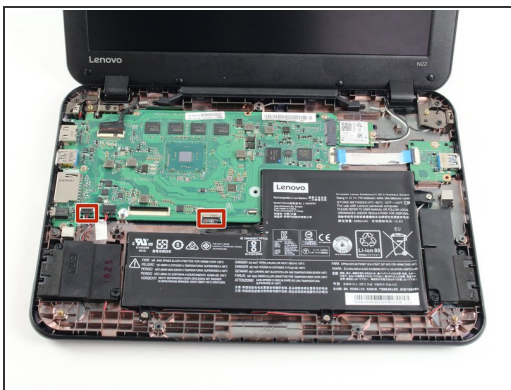
- Once the keyboard is released, grab the two top corners closest to the screen and slowly lift the keyboard up.
- ⚠ Do not lift the keyboard quickly or you might break the two cables that connect the keyboard to the motherboard.
- Disconnect the cables by lifting up the retaining flaps on the black ZIF connectors.
- Slowly pull the cables up and out of the connectors.

Step 4



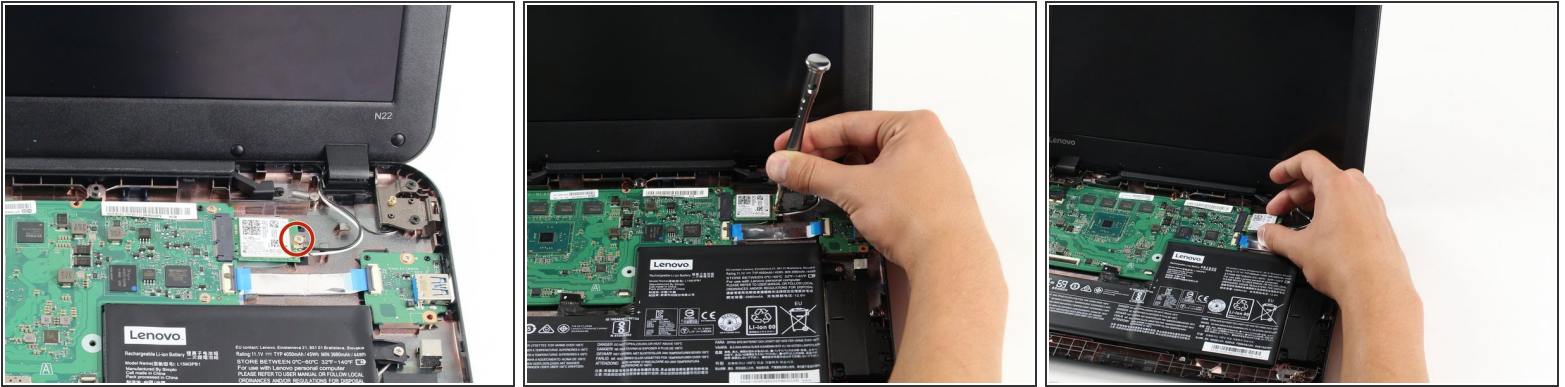
- Lift the keyboard up and off the back panel, exposing the motherboard and battery.

Step 5 — Motherboard



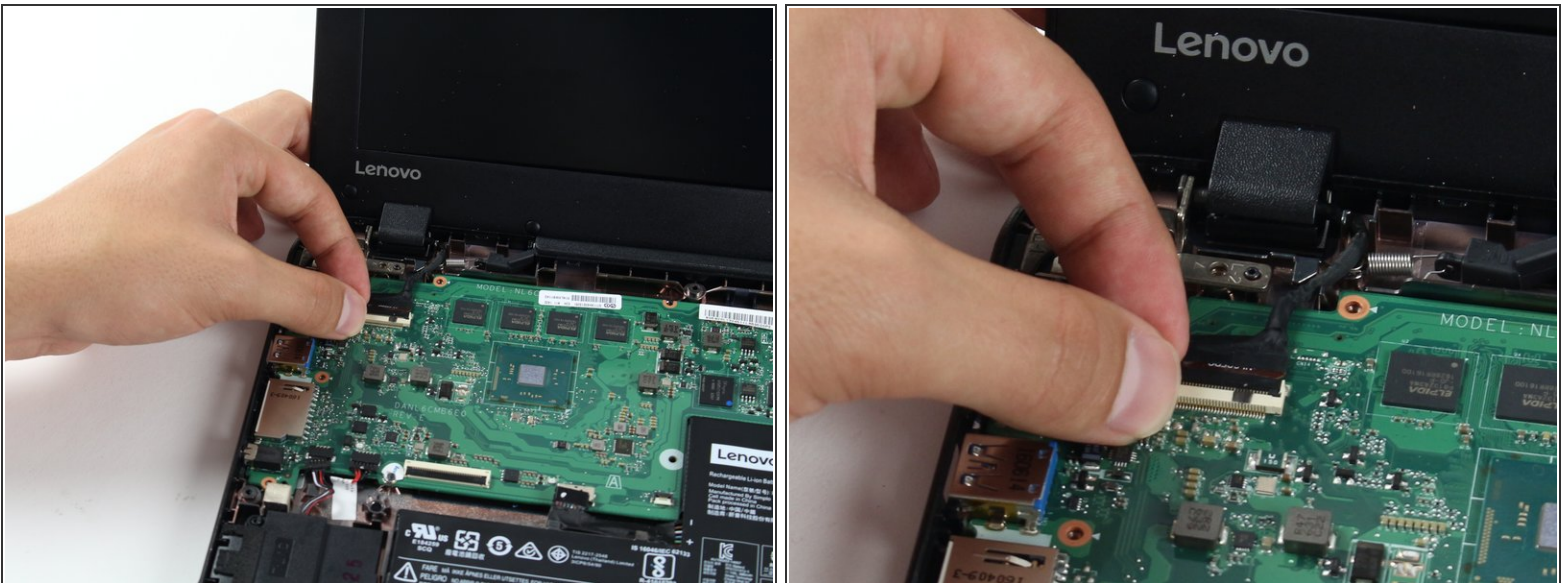
- Disconnect the speaker and battery cables from their sockets on the motherboard by using the edge of the plastic opening tool to separate the cable connectors from the sockets.
- Pull the cables towards you and away from the sockets.

Step 6



- Use a Phillips #1 screwdriver to remove the 3.6 mm screw in the wireless card.
- Gently slide the wireless card to the right to remove it from the standard socket on the motherboard.

Step 7



- Disconnect the display cable from the motherboard by lifting up the black ZIF connector retaining flap.
- Gently pull the cable up towards the screen.

Step 8



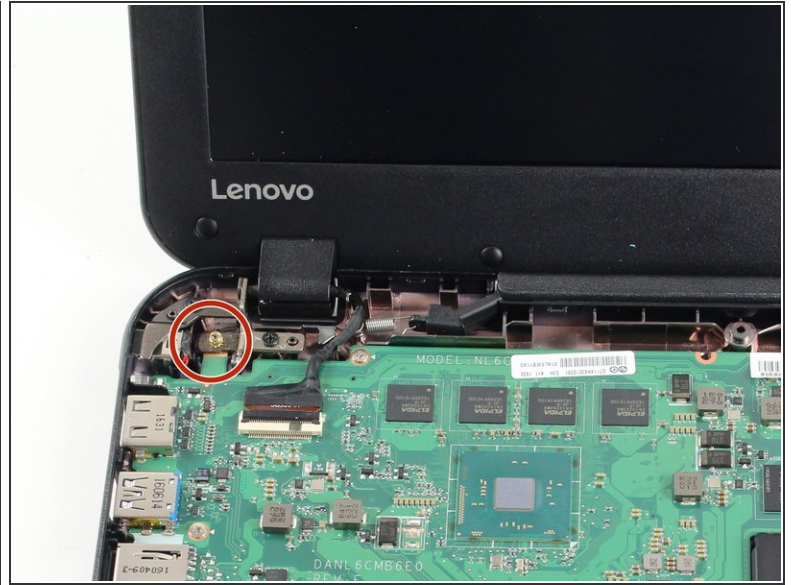
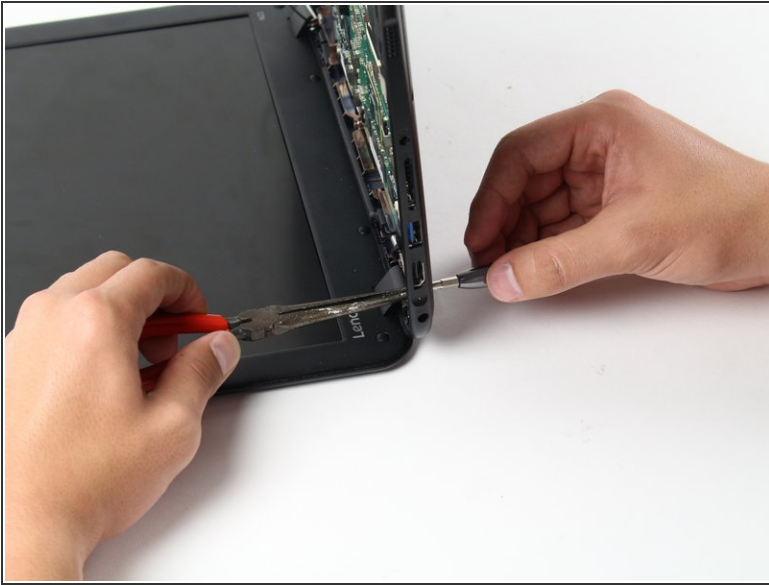
- Disconnect the USB circuit from the motherboard by lifting the black ZIF retaining flap up.
- Gently pull the blue tab to the right to remove the cable.


Step 9



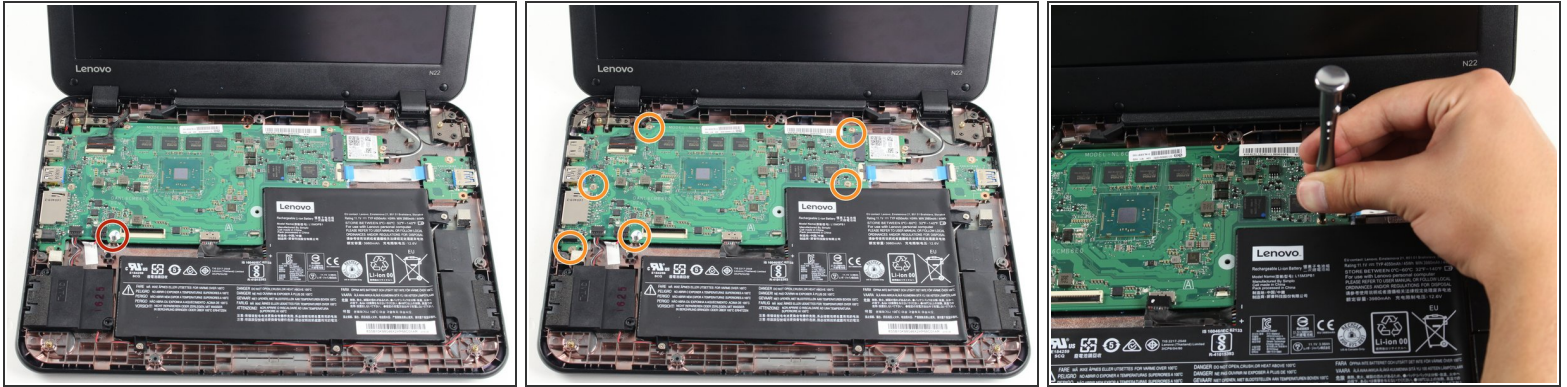
- Wedge the plastic opening tool between the rubber foot and the bottom of the chromebook. Lift up the plastic opening tool to remove the foot. This exposes the back end of a screw holding down the motherboard.

Step 10



- Flip the laptop on its top so that the screen is facing up and the back panel is bent at a 90 degree angle. This will allow you to see both the gold nut and the screw.
 - Hold the gold nut steady with a pair of needle nose pliers.
 - While holding onto the gold nut on the motherboard, remove the 6.5 mm screw on the bottom of the chromebook by rotating the Phillips #1 screwdriver to the left.
-  You may need an extra pair of hands for this step.

Step 11



- Remove the Lenovo sticker on top of the screw.
- Use a Phillips #1 screwdriver to remove the six 3.6 mm screws from the motherboard.

Step 12



- Carefully lift the motherboard up and out of the back panel to remove it.
- ☑ When reinstalling the motherboard make sure to line up the left corner of the motherboard with the silver slit on the back panel.

To reassemble your device, follow these instructions in reverse order.