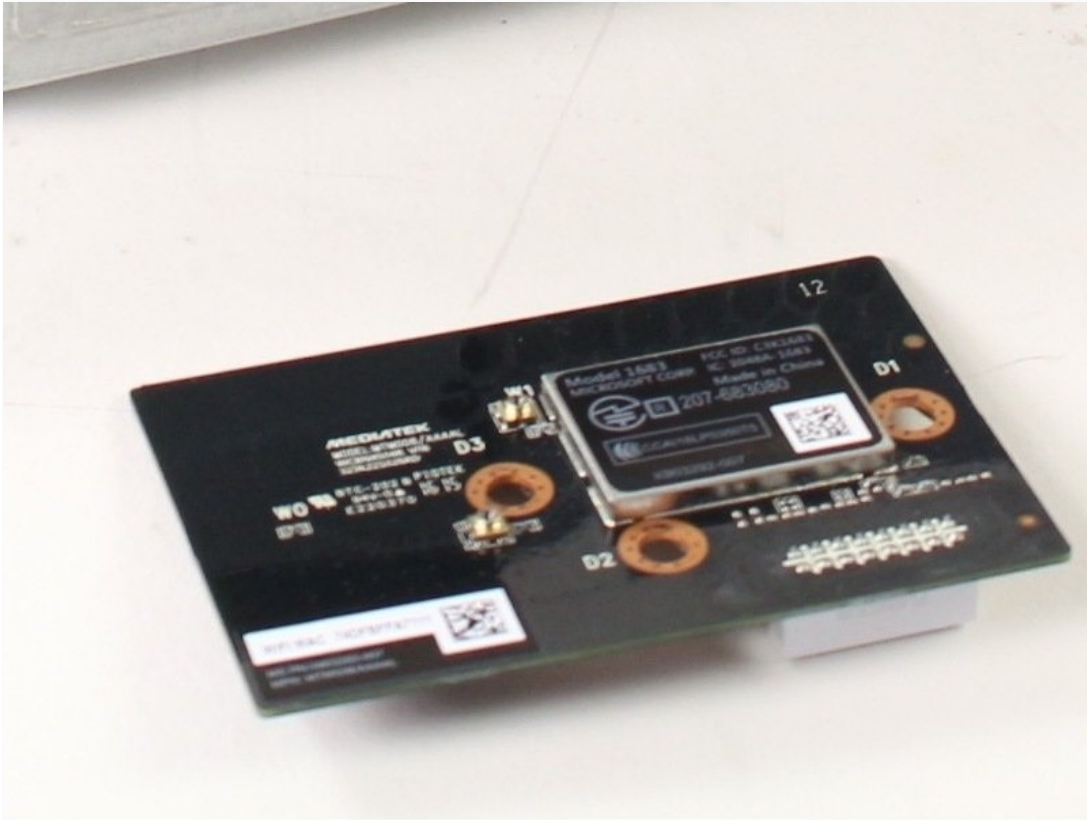




Xbox One S WiFi Card Replacement

So you've confirmed your Xbox One S cannot...

Written By: Victoria Law



INTRODUCTION

So you've confirmed your Xbox One S cannot connect to any Wi-Fi sources, but other devices can. Follow these steps to replace the Wi-Fi card.



TOOLS:

[iFixit Opening Tool](#) (1)
[TR10 Torx Security Screwdriver](#) (1)
[TR8 Torx Security Screwdriver](#) (1)



PARTS:

[Xbox One S Wi-Fi Board](#) (1)

Step 1 — Case



- Flip the Xbox One S so that the bottom of the case is facing upward.

Step 2



- Begin by working at the case on the rear where the warranty sticker is located. Insert the plastic opening tool into the gap between the bottom of the case and the grated top side. Then find the clips in between that hold the case in place. Use the opening tool to pop the clips out. The best method is to pry the black case away from the bottom.

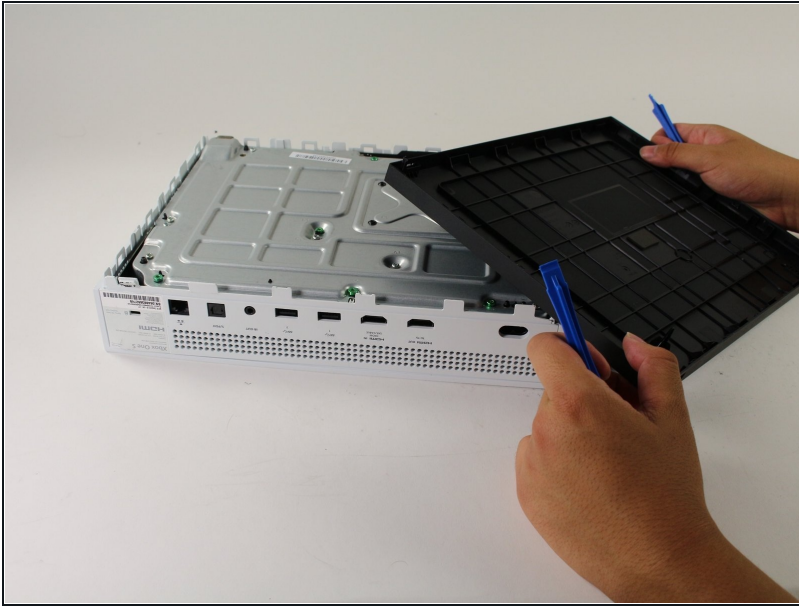
- Use the opening tool to pop the clips out. The best method is to pry the black case away from the bottom.

- ① You will hear clicking sounds when you are prying the case open. It may be fairly difficult to remove the bottom.

⚠ It's possible that the clips may break when you remove the bottom from the case.

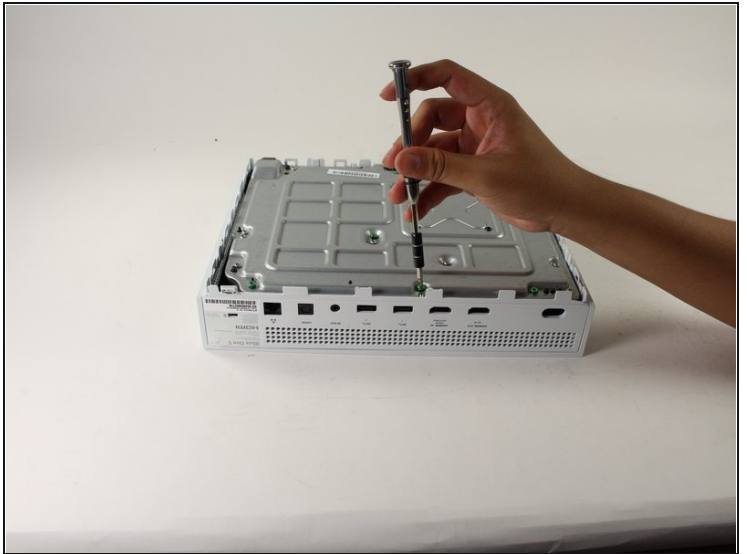
- ① We recommend starting at the back where the warranty sticker is located. Pry along the rear edge until all clips are free. From there do each side. When three sides are free start at the end of the front opposite the sync button. Be cautious and take your time and all should separate without any damage.

Step 3



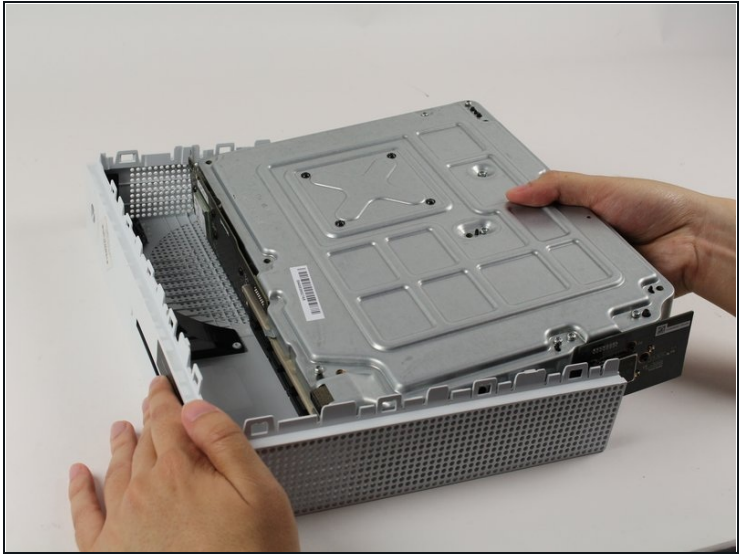
- Once all of the clips are opened, remove the bottom part of the case.

Step 4



- Use a T10 Torx screwdriver to remove the six green 50 mm long screws from the metal case labeled F1 through F6.

Step 5



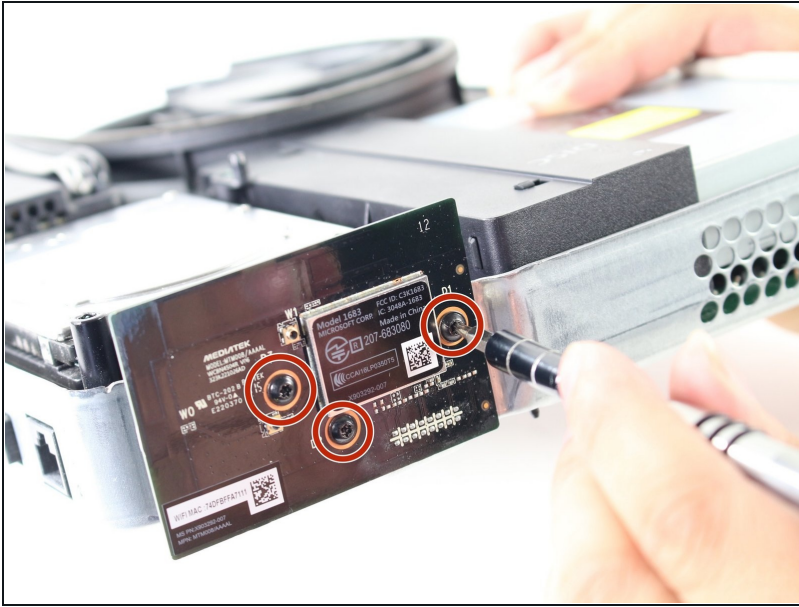
- Gently separate the interior case from the white exterior case using the appropriate method.
- Pry the white plastic sides outwards at the rear to separate from the plastic I/O shield

Step 6 — WiFi Card



- Search the sides of the interior case for the Wi-Fi card. It should be across from the hard drive.

Step 7



- Remove the black T8 screws with orange circles around them (there should be 3 of them).
- After removing the screws, gently detach the Wi-Fi card.

To reassemble your device, follow these instructions in reverse order.