



iMac Intel 24" EMC 2134 and 2211 Hard Drive Replacement

This guide will help you replace the hard drive.

Written By: Brittany McCrigler



INTRODUCTION

This guide will help you replace the hard drive.



TOOLS:

- [Heavy-Duty Suction Cups \(Pair\)](#) (1)
- [Phillips #1 Screwdriver](#) (1)
- [T6 Torx Screwdriver](#) (1)
- [TR8 Torx Security Screwdriver](#) (1)



PARTS:

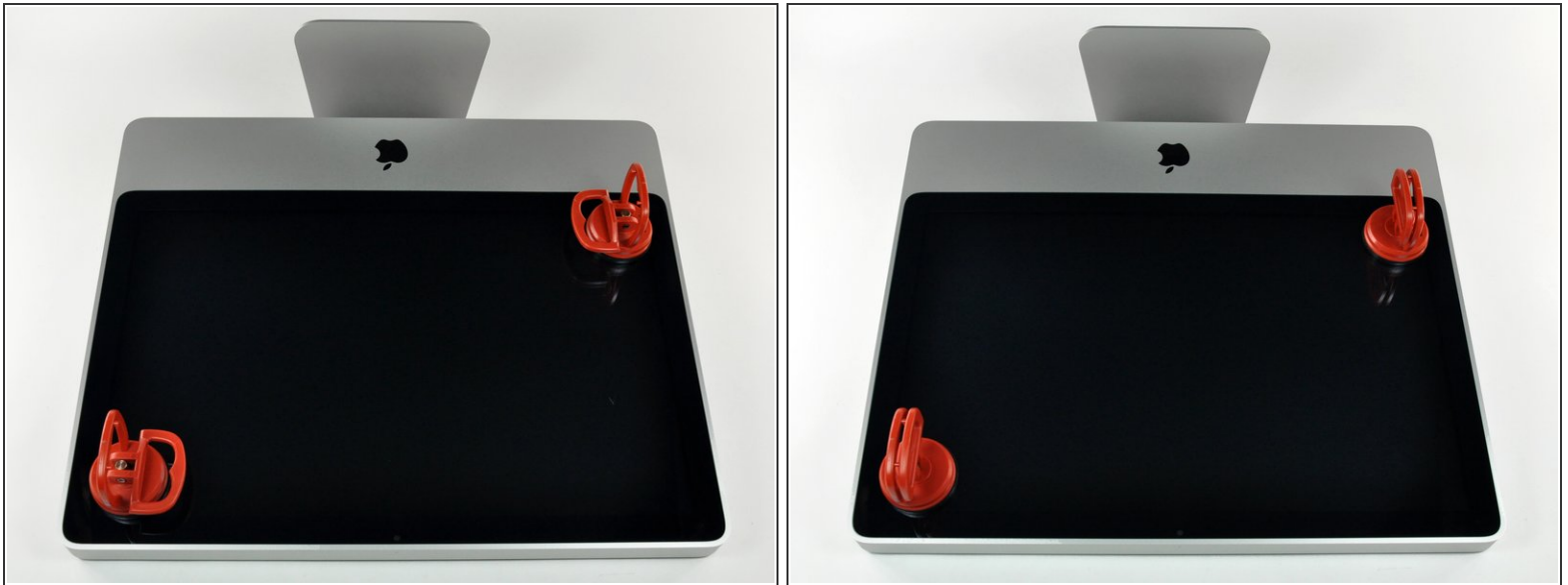
- [iMac Intel 20" and 24" Mid 2007-Early 2009 SSD Upgrade Kit](#) (1)
- [iFixit 2.5" to 3.5" SSD HDD Adapter](#) (1)

Step 1 — Access Door



- Loosen the single Phillips screw in the center of the access door.
- ⓘ This screw is captive in the access door.
- Remove the access door from your iMac.

Step 2 — Glass Panel



- ⓘ The glass panel is fixed onto the front bezel with fourteen magnets around its perimeter.
 - Stick two suction cups to opposing corners of the glass panel.
- ⓘ To attach the [suction cups](#) we sell, first position the suction cup with the movable handle parallel to the face of the glass panel. While lightly holding the suction cup against the glass, raise the movable handle until it is parallel with the other handle.
- ⓘ If your suction cups refuse to stick, try cleaning both the glass panel and the suction cup with a mild solvent such as Windex.

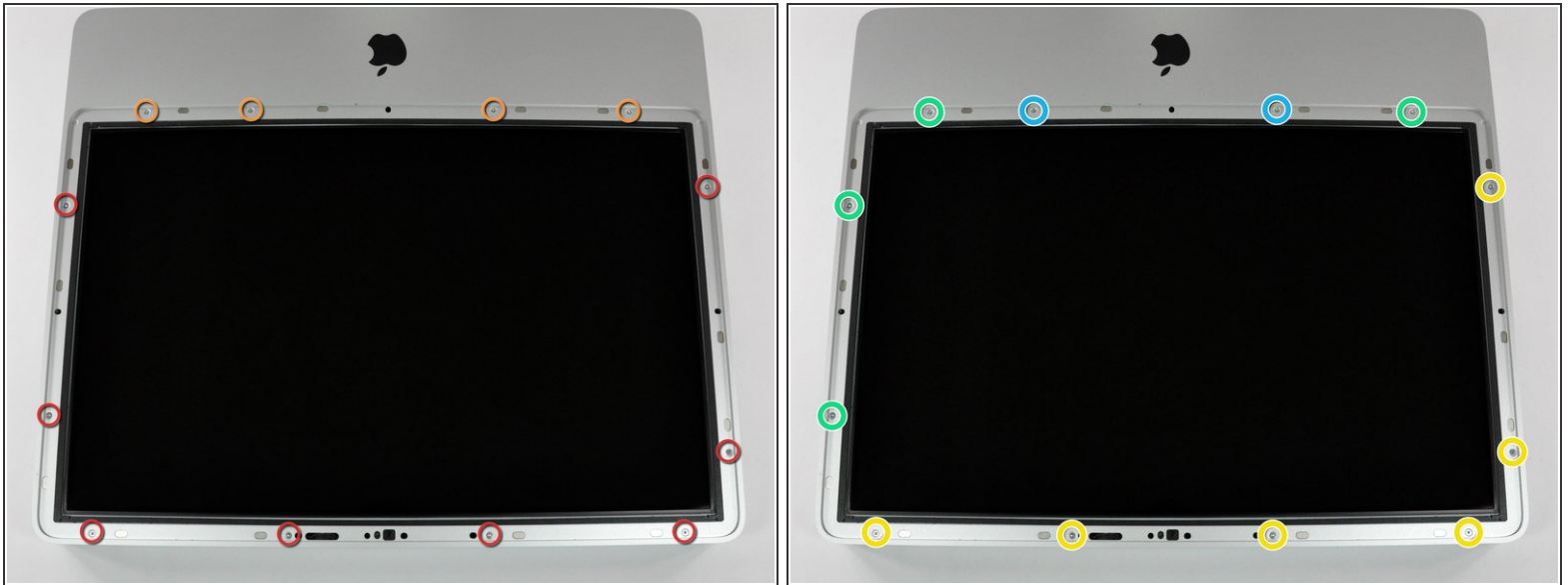
Step 3



- Gently pull the glass panel straight up off the iMac.

- ⚠ The glass panel has several positioning pins around its perimeter. To avoid shearing these pins off the glass panel, be sure to only pull straight up during removal.
- ★ Be meticulous about cleaning the LCD and the inside face of the glass panel before reinstallation, as any fingerprints or dust trapped inside will be annoyingly visible when the display is on.

Step 4 — Front Bezel



- Remove the following 12 screws securing the front bezel to the rear case:

- Eight 13 mm T8 Torx screws
- Four 25 mm T8 Torx screws

i You may have different-length screws depending on your model:

- Six 13 mm T8 Torx screws
- Four 25 mm T8 Torx screws
- Two 35 mm T8 Torx screws

Step 5



⚠ The front bezel is still attached to the iMac by the microphone cable.

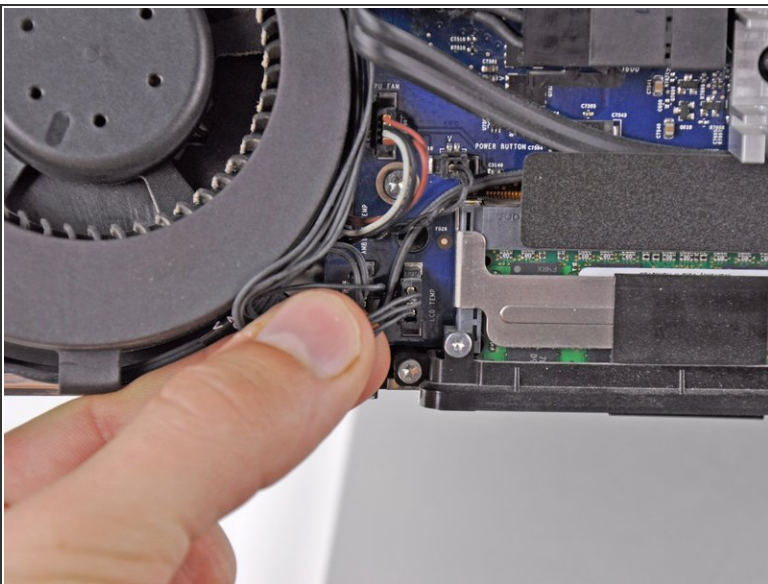
- Gently lift the front bezel from its top edge off the rear case. It helps to use your thumbs to push down very gently on the corners of the display.
 - Once the top edge of the front bezel has cleared the rear case, rotate the front bezel toward the stand and lift it off the rear case.
- ✦ When reinstalling the front bezel, start at the lower edge and make sure it is flush with the rear case before lowering the top edge onto the iMac.

Step 6



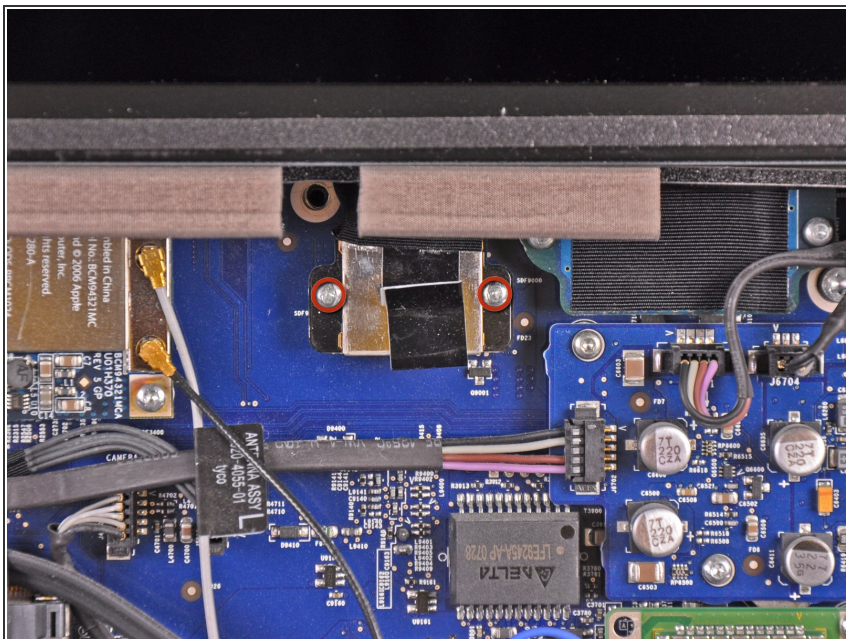
- Disconnect the microphone cable connector, removing tape as necessary.
- ★ For the front bezel to sit properly, be sure to tuck the microphone cable and connector into the void next to the camera board.

Step 7 — Display Panel



- Disconnect the LCD temperature sensor by pulling the connector straight out of its socket on the logic board.
- i If necessary, de-route the LCD temperature sensor cable from behind the logic board.

Step 8



- Remove the two 5.3 mm T6 Torx screws securing the display data cable to the logic board.

Step 9



- Disconnect the display data cable connector from its socket on the logic board by pulling the attached plastic tab towards you and away from the iMac.

Step 10

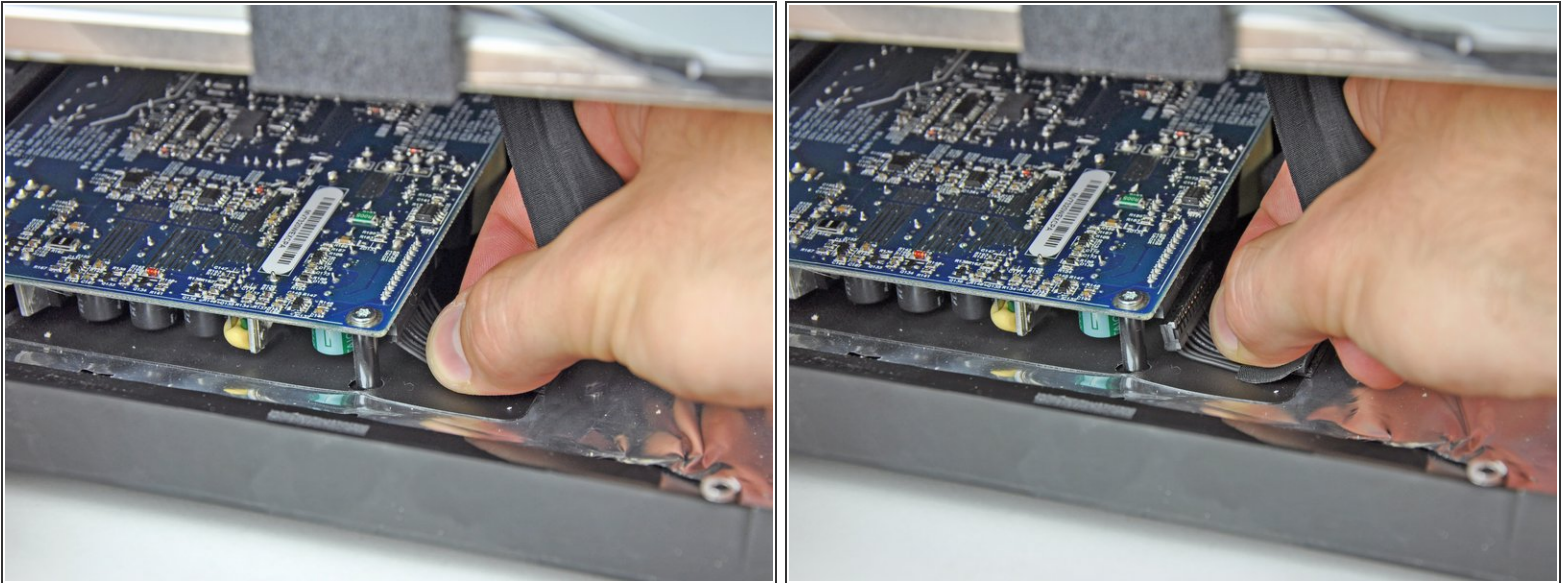


⚠ Lay the iMac down on a table before you remove the LCD so that it doesn't fall.

- Remove the eight 12 mm T8 Torx screws securing the display panel to the rear case.
- Lift the right side of the display panel a few inches up from the iMac.

⚠ Do not lift the LCD all the way up; there are still connectors attaching the LCD to the internals.

Step 11



- With the LCD lifted, disconnect the LCD cable by pulling down.

⚠ The LCD cable is attached to the underside of the power supply; be careful where you put your fingers so you don't get zapped by a capacitor.

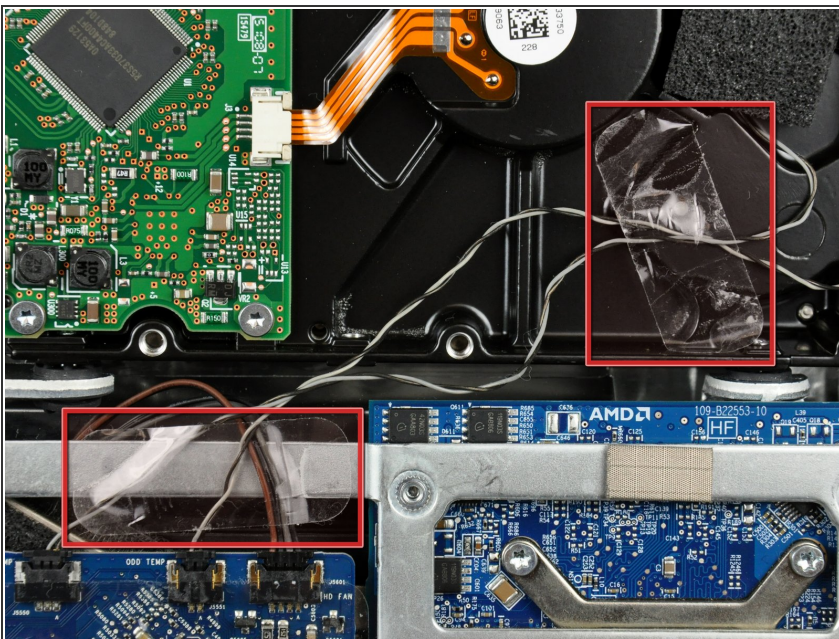
- ✦ On reassembly, you may find it helpful to remove the power supply, reconnect the LCD power cable, and then reinstall the power supply.
- Alternatively, the LCD power cable can be disconnected from the LCD, rather than the power supply.

Step 12



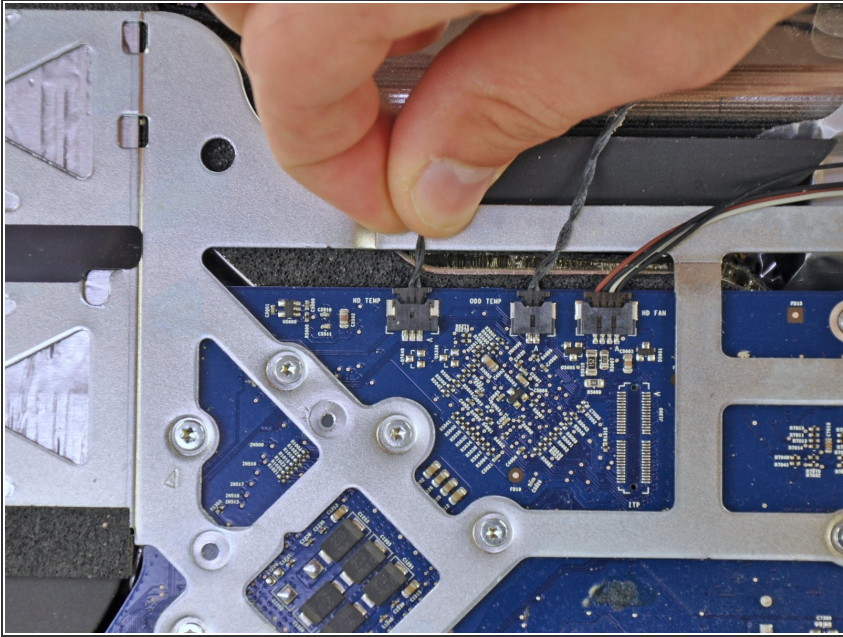
- Continue to lift the LCD from the right side.
- Remove the LCD.

Step 13 — Hard Drive



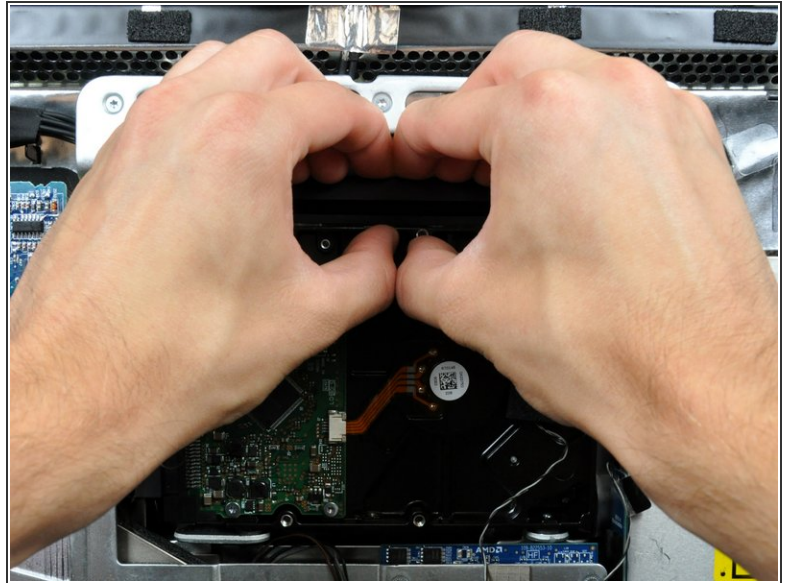
- ⓘ If necessary, remove the pieces of tape securing the hard drive/optical drive thermal sensor cables to your iMac.

Step 14



- Disconnect the hard drive thermal sensor by pulling its connector upwards toward the top of your iMac.
- ⓘ When removing this connector, it is helpful use your thumbnails to push the ears on either side of the connector toward the top of your iMac.

Step 15



⚠ Pressing the top of the hard drive bracket down to release it from the rear case requires a substantial amount of force. We recommend laying your iMac stand-side down on a table to avoid knocking it over.

- Press the hard drive bracket down toward the bottom edge of your iMac to free it from the rear case, then rotate the top of the drive toward yourself.

Step 16

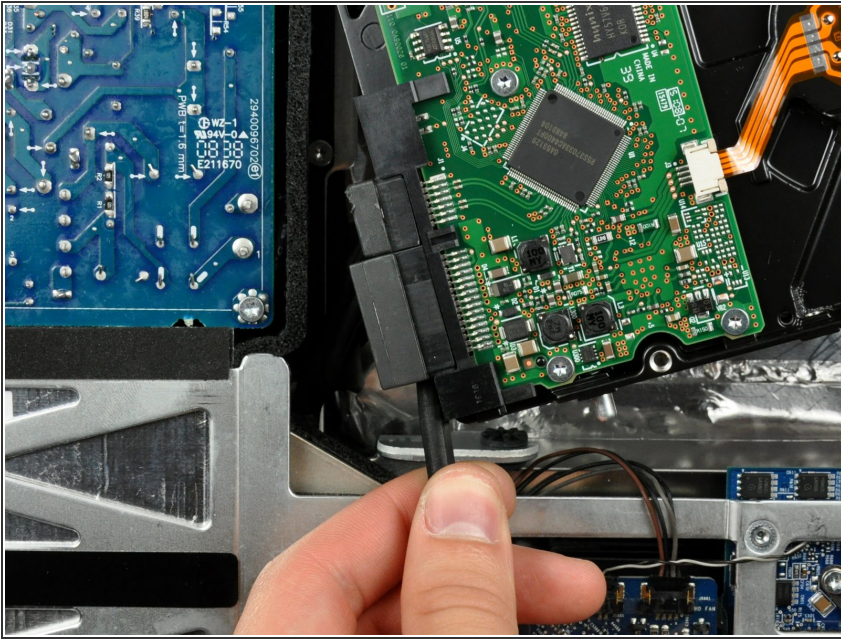


- Rotate the hard drive toward yourself, then lift it up off its mounting pins.

⚠ The hard drive is still connected via the SATA cables.

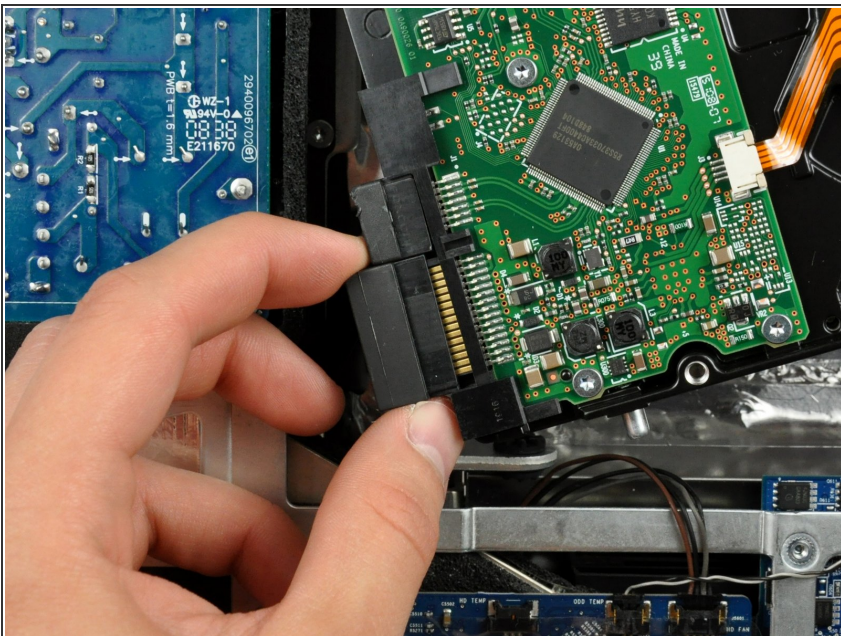
- ☞ When reinstalling your hard drive, be careful not to push the rubber grommets through the openings in the chassis with the lower hard drive pins as retrieving them may require logic board removal.

Step 17



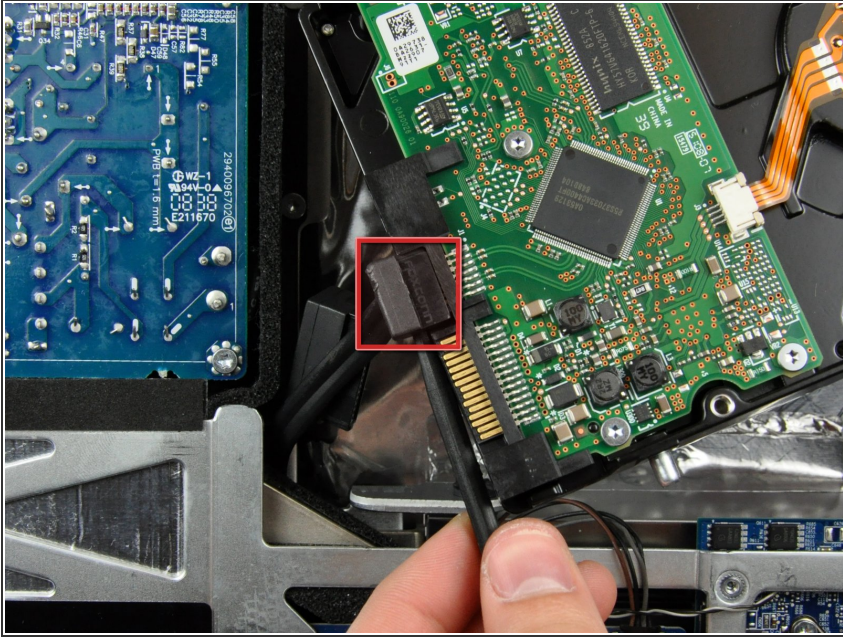
- Insert the flat end of a spudger between the SATA power cable connector and the edge of the hard drive.
- Twist the spudger to separate the connector from the hard drive.

Step 18



- Pull the SATA power connector away from the hard drive.

Step 19



- Disconnect the SATA data cable by pulling its connector away from the hard drive.

Step 20 — Hard Drive



- Remove the piece of foam tape covering the hard drive thermal sensor.

Step 21



- Use the tip of a spudger to lift the thermal sensor lock finger while pulling lightly on the thermal sensor cable.

i If your thermal sensor seems to be stuck to the face of the hard drive, skip to the next step.

Step 22



- Use the flat end of a spudger to pry the thermal sensor bracket off the face of the hard drive.

★ If you're replacing your hard drive, transfer this bracket and the thermal sensor to your new hard drive. If the adhesive refuses to stick during reinstallation, apply double-sided tape to the underside of the two flat ears of the thermal sensor bracket.

Step 23



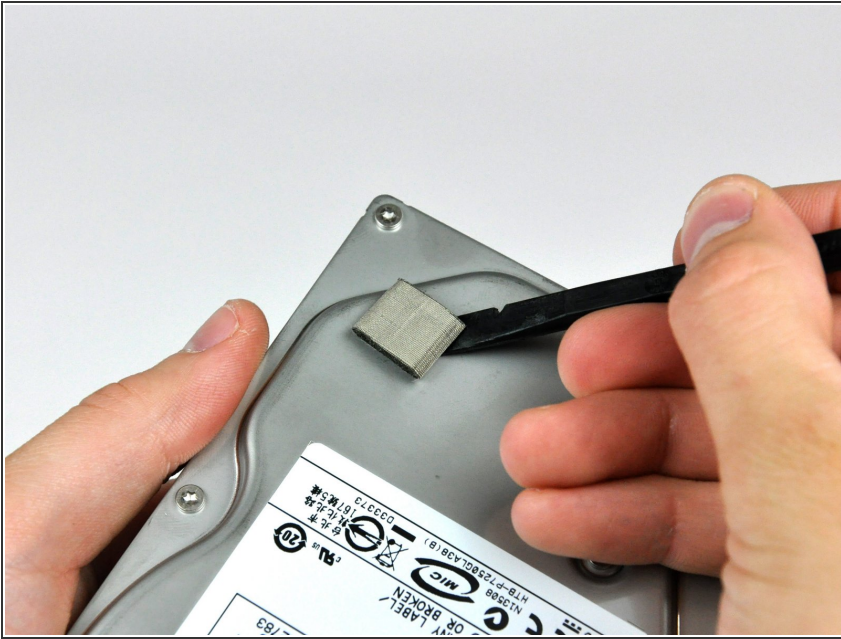
- Remove the two T8 Torx screws securing the hard drive bracket to the hard drive.
- ⓘ After you remove these two screws, the hard drive bracket will fall away from the hard drive.
- ★ Don't forget to transfer these to your new hard drive.

Step 24



- Remove the two T8 Torx pins from the connector side of your hard drive.
- ★ Don't forget to transfer these to your new hard drive.

Step 25



- Use the flat end of a spudger to remove the piece of EMI foam from the underside of your hard drive.
- ★ Don't forget to transfer this to your new hard drive.
- ⓘ If you are installing a new hard drive, we have an [OS X install guide](#) to get you up and running.

To reassemble your device, follow these instructions in reverse order.