



# Xbox One S Interior Case Top Panel Replacement

This guide will show you how to remove the top...

Written By: Andrew



# INTRODUCTION

This guide will show you how to remove the top panel of the interior case of the Xbox Box One S. This is necessary for the removal of either the hard drive, the disk drive, the heatsink/fan, the motherboard, or the power block.



## TOOLS:

[iFixit Opening Tool](#) (1)

[TR10 Torx Security Screwdriver](#) (1)



## PARTS:

[Xbox One S Top Case](#) (1)

---

## Step 1 — Case



- Flip the Xbox One S so that the bottom of the case is facing upward.

## Step 2



- Begin by working at the case on the rear where the warranty sticker is located. Insert the plastic opening tool into the gap between the bottom of the case and the grated top side. Then find the clips in between that hold the case in place. Use the opening tool to pop the clips out. The best method is to pry the black case away from the bottom.

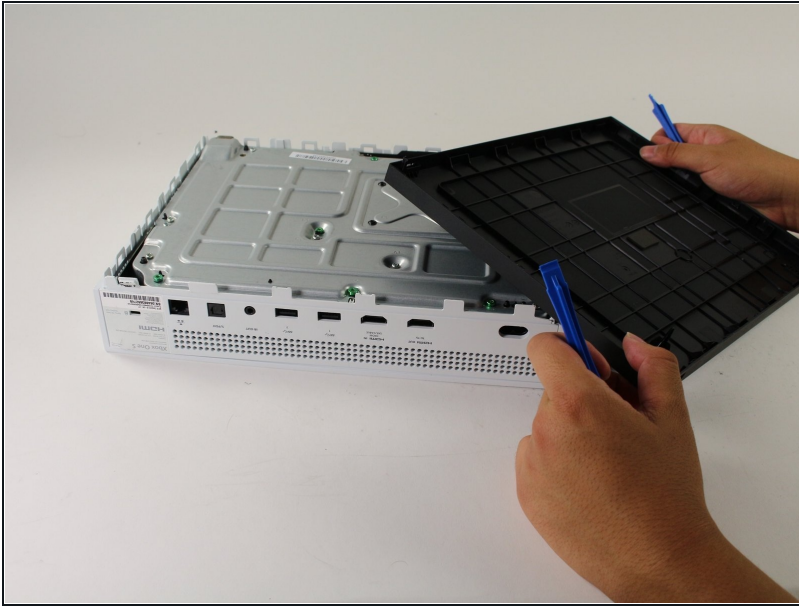
- Use the opening tool to pop the clips out. The best method is to pry the black case away from the bottom.

- ① You will hear clicking sounds when you are prying the case open. It may be fairly difficult to remove the bottom.

⚠ It's possible that the clips may break when you remove the bottom from the case.

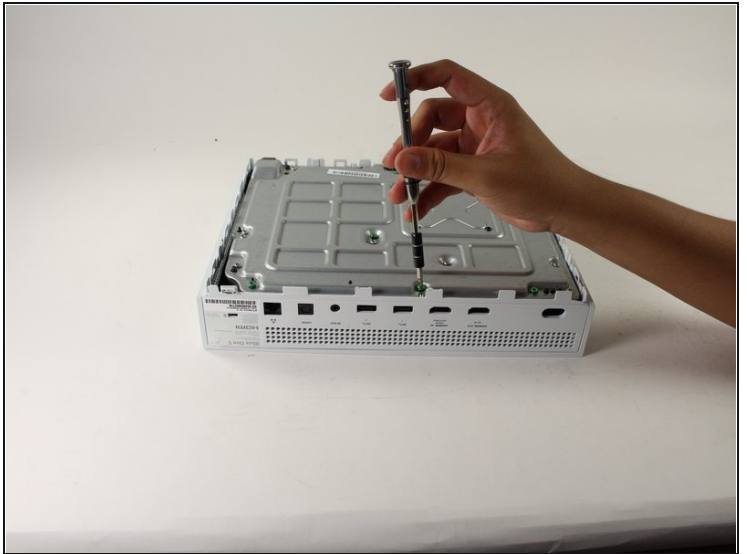
- ① We recommend starting at the back where the warranty sticker is located. Pry along the rear edge until all clips are free. From there do each side. When three sides are free start at the end of the front opposite the sync button. Be cautious and take your time and all should separate without any damage.

### Step 3



- Once all of the clips are opened, remove the bottom part of the case.

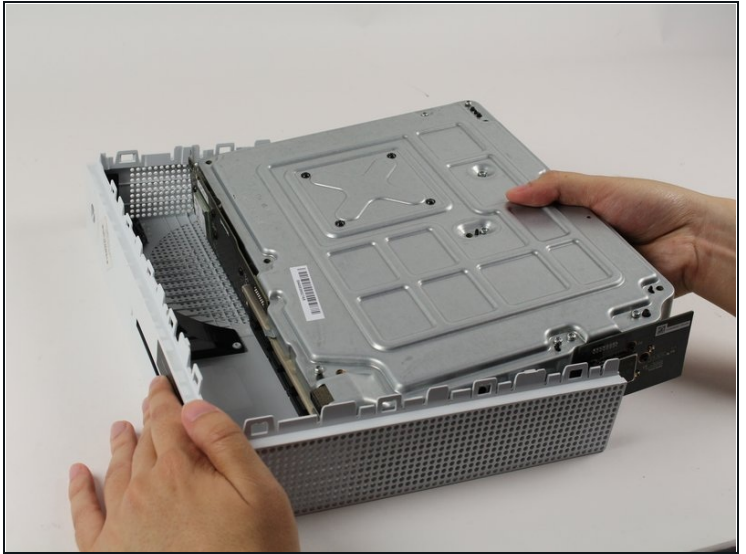
### Step 4



- Use a T10 Torx screwdriver to remove the six green 50 mm long screws from the metal case labeled F1 through F6.

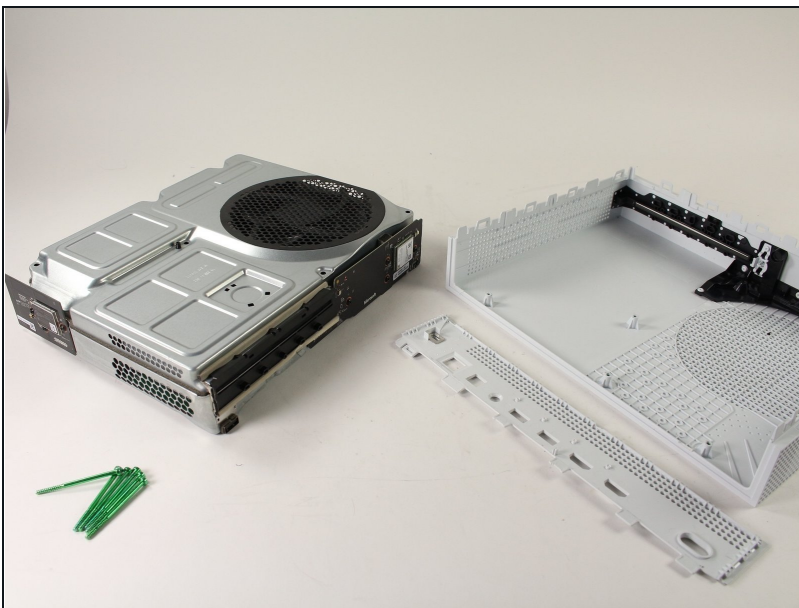


## Step 5



- Gently separate the interior case from the white exterior case using the appropriate method.
- Pry the white plastic sides outwards at the rear to separate from the plastic I/O shield

## Step 6 — Interior Case Top Panel



- Flip the interior case so it is fan side upward.

## Step 7



- To access the hardware within the casing, you can pop and lift the top panel of the casing. It should come right off.

---

To reassemble your device, follow these instructions in reverse order.