



Dell Inspiron 910 Web Camera Replacement

If your Dell Inspiron 910 web camera isn't...

Written By: Arnesh Mudaliar



INTRODUCTION

If your Dell Inspiron 910 web camera isn't showing a clear image, or no image at all, you may have a malfunctioning camera. Before replacing your camera, inspect the lens for debris or smudges, and clean with a microfiber cloth. If the problem persists, follow these steps to replace your web camera. This guide requires a plastic opening tool, a phillips screwdriver, and flathead screwdriver to follow. Before using this guide, make sure the laptop is powered off completely to prevent any further damage and the necessary tools are accessible.

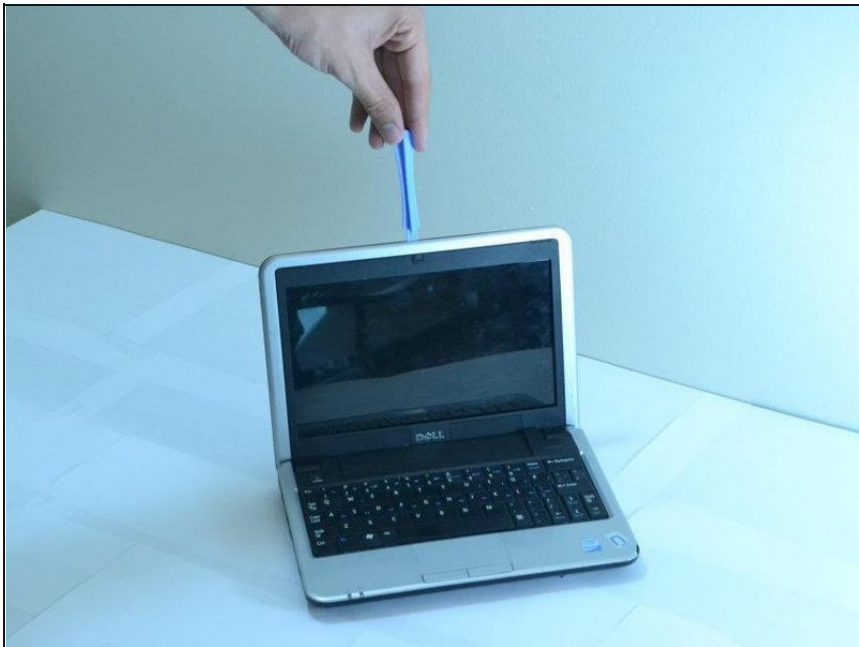
TOOLS:

[iFixit Opening Tool](#) (1)

[Flathead 3/32" or 2.5 mm Screwdriver](#)
(1)

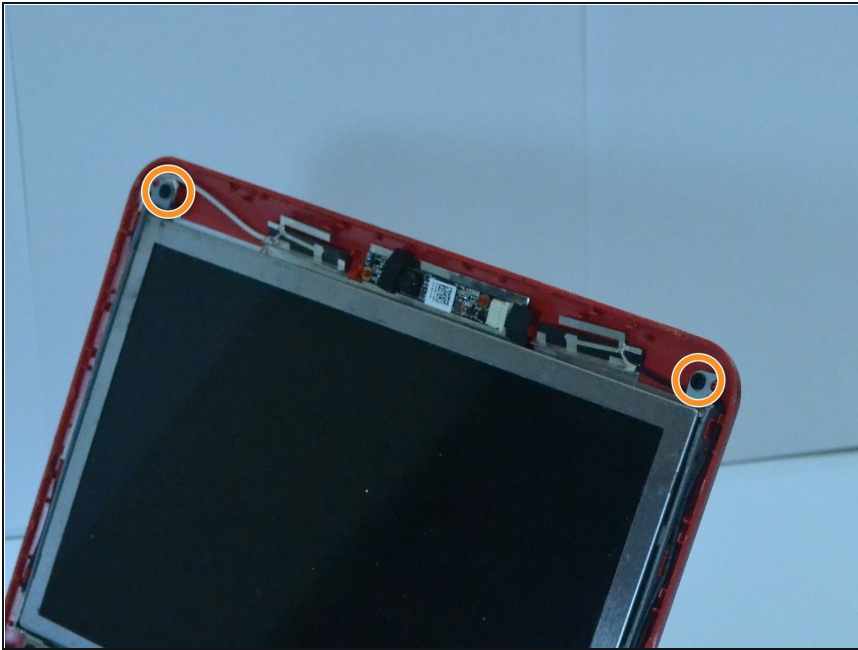
[Phillips #00 Screwdriver](#) (1)

Step 1 — Screen



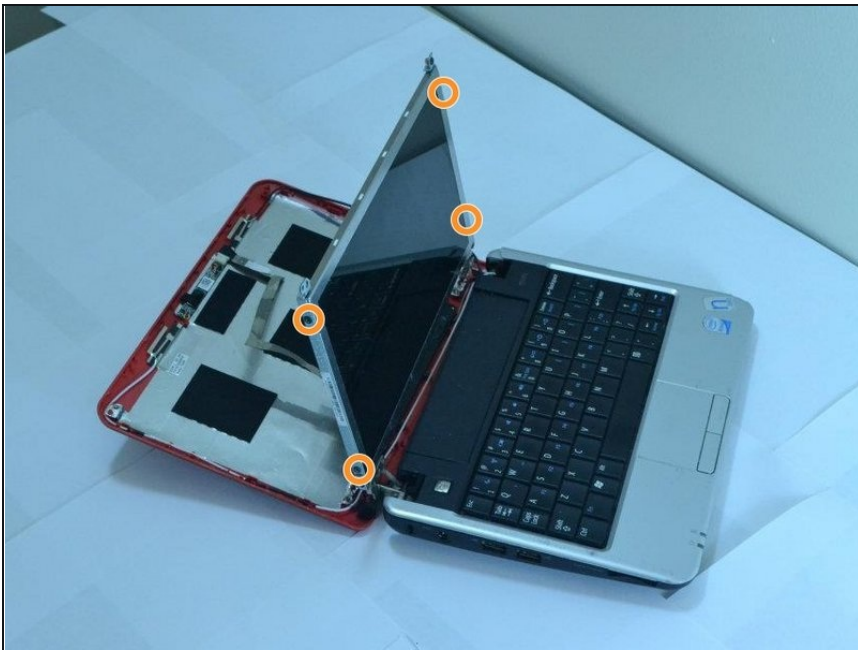
- Using a plastic opening tool, pry the front silver bezel away from the colored plastic shell.

Step 2



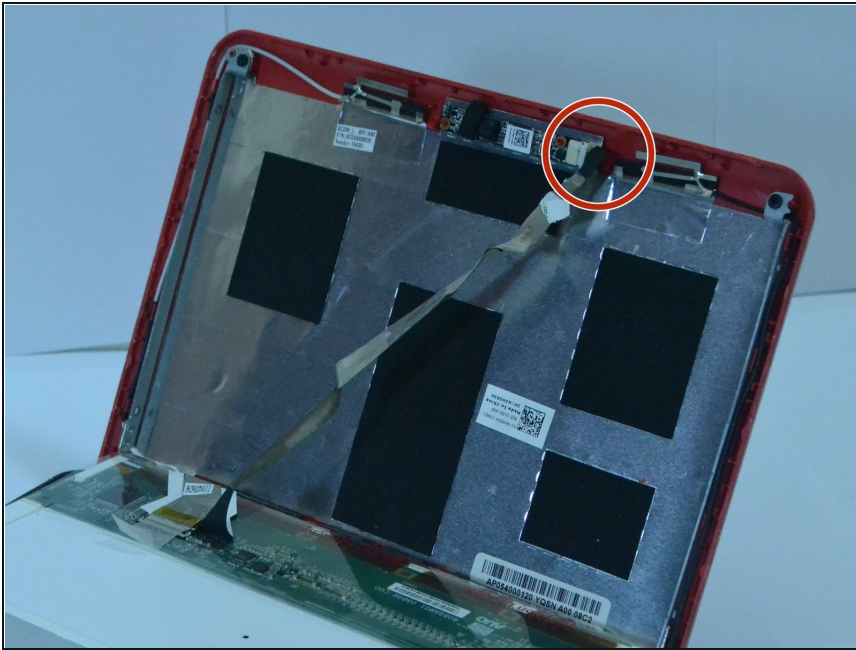
- Unscrew the two screws using a Phillips #00 screwdriver from the metal casing that retains the screen.

Step 3



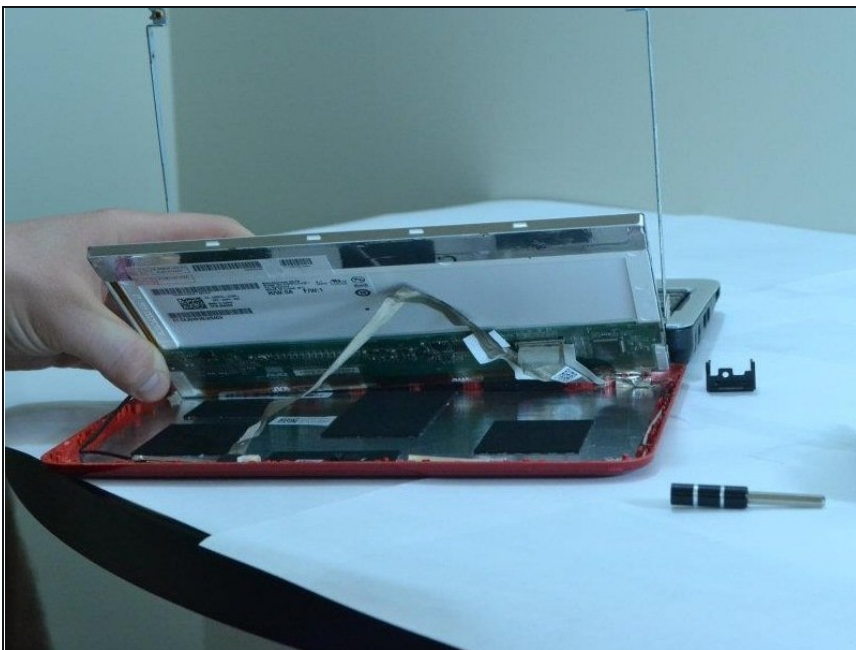
- Pull down the laptop's back, keeping the screen upright, held in place by two metal strips going along its sides.
 - Unscrew the 4 screws from the two strips.
- ⚠ While unscrewing the second side, make sure to hold the screen so that it doesn't fall when the screws are removed.

Step 4



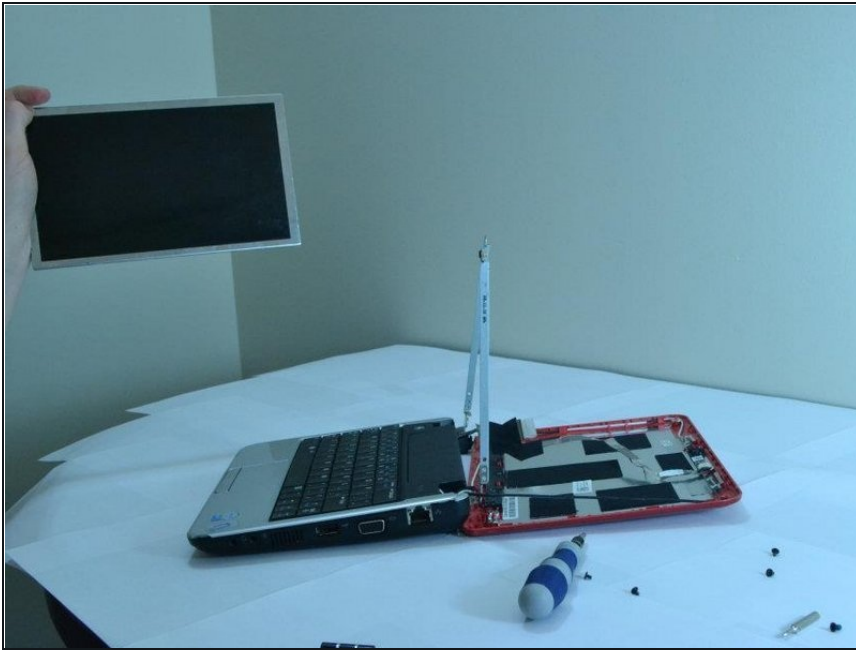
- Gently lay the screen down, being careful not to damage the ribbon connector.

Step 5



- Disconnect the cord connecting the screen to the rest of the laptop. The cable will be attached to the screen using tape, so it can be safely removed. The actual cord connection is at the circuit board.

Step 6



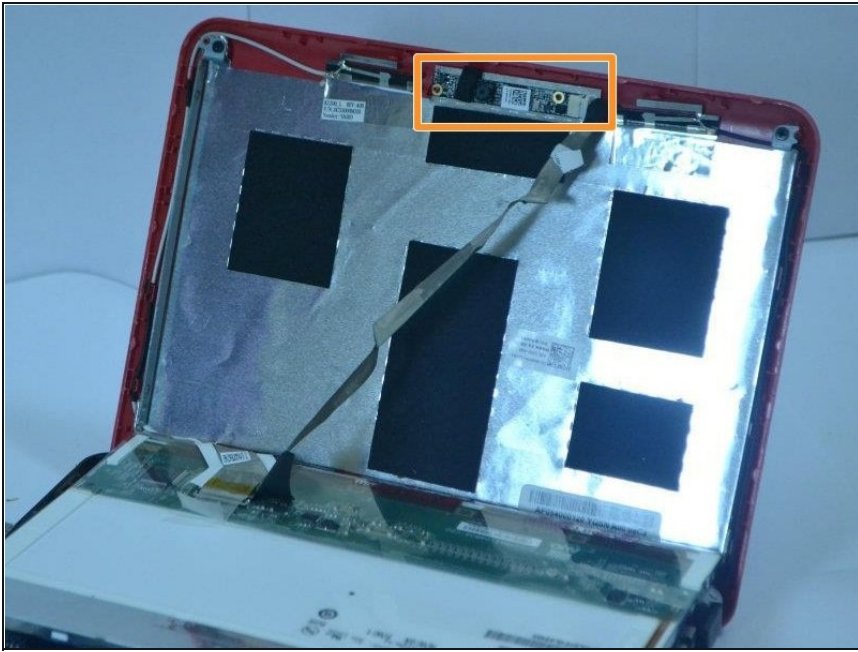
- Pull the screen out.
Congratulations! You have removed the screen.

Step 7 — Web Camera



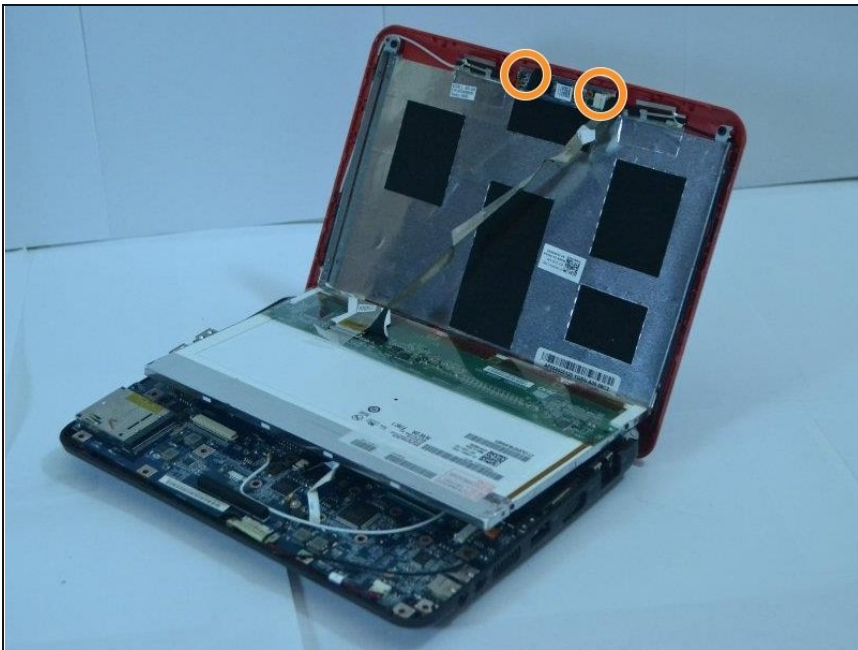
- Remove the two small screws above the screen at the center of the lid.

Step 8



- Insert the replacement webcam module so the two screws match up with the two holes in the module.

Step 9



- Replace and tighten the two screws so that the module is held in place.

Step 10



- Carefully connect the ribbon cable running along the back of the screen to the appropriate docking station in the webcam module.

To reassemble your device, follow these instructions in reverse order.