



# iMac G5 17" Model A1144 AirPort/Bluetooth Board Replacement

Regain wireless connectivity by replacing your...

Written By: Walter Galan



# INTRODUCTION

Regain wireless connectivity by replacing your broken AirPort/Bluetooth board.

## TOOLS:


Phillips #1 Screwdriver (1)  
Plastic Cards (1)  
Spudger (1)  
TR10 Torx Security Screwdriver (1)  
T6 Torx Screwdriver (1)  
TR8 Torx Security Screwdriver (1)

## PARTS:


Mid/Late 2005 Airport/Bluetooth Board (1)

## Step 1 — Access Door



 Before you work on the computer, unplug the computer and press the power button for 20-30 seconds to drain the stored energy in the power supply.

● Loosen the two Phillips screws securing the access door to your iMac.

 These screws are captive in the access door.

## Step 2



- Remove the access door from your iMac.

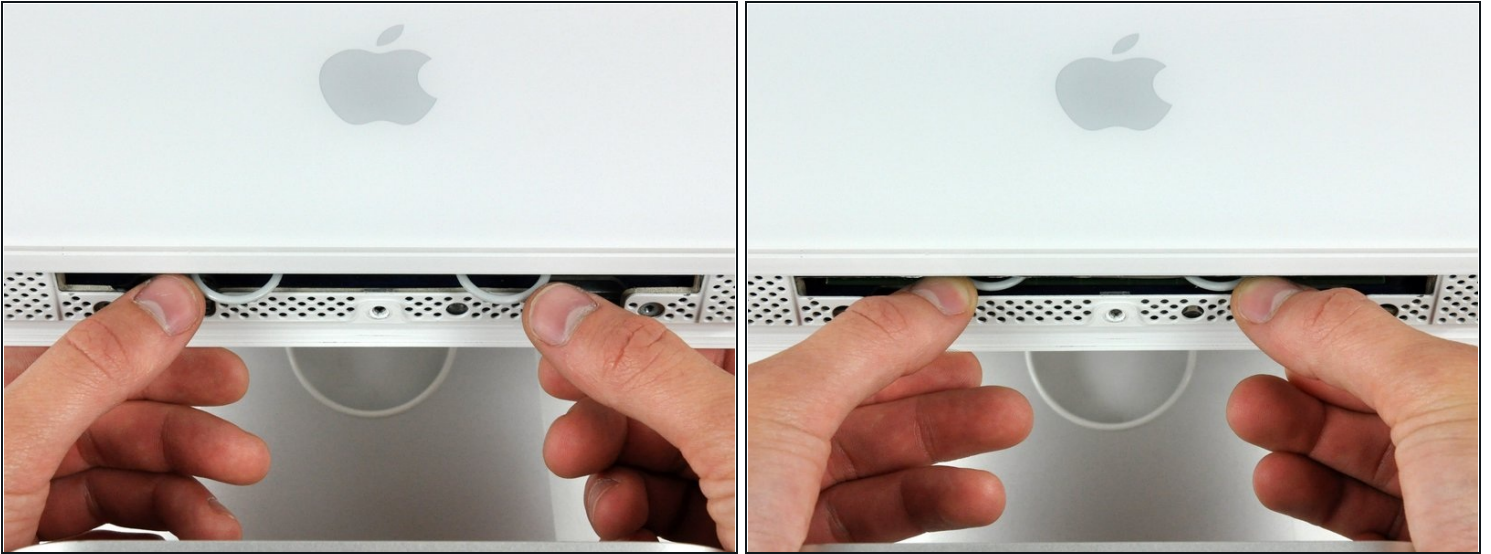
## Step 3 — Front Bezel



- Remove the three T8 Torx screws securing the front bezel to the rear panel.



## Step 4



① Orient the iMac face-up, on its backside.

- Use your thumbs to press both RAM arms in past the front bezel for enough clearance to lift it off the rear case.

## Step 5



- While holding the RAM arms in with your thumbs, lift the lower edge of the front bezel enough to clear the rear case.

## Step 6



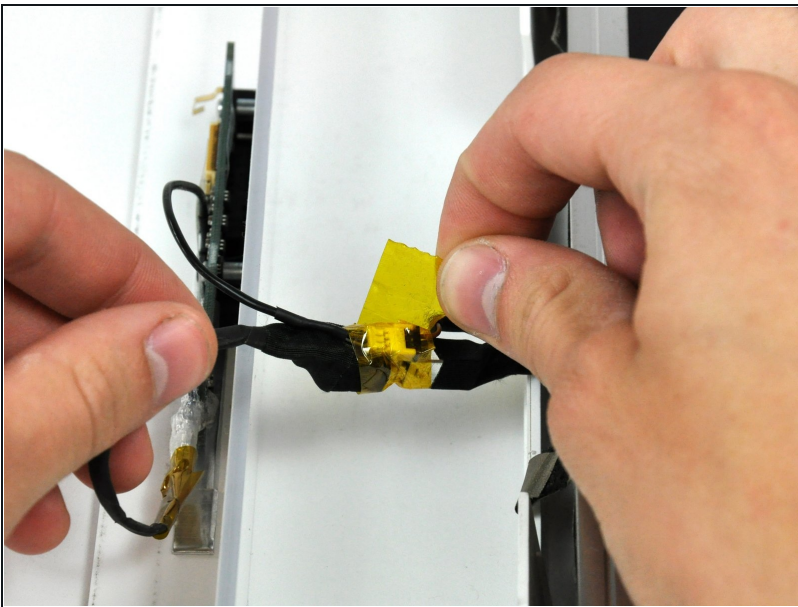
- ① Re-orient your iMac so it sits upright on the stand.
- Insert a [plastic card](#) up into the corner of the air vent slot at the top of the rear case.
- Push the card toward the top of the iMac to release the front bezel latch.
- Pull the front bezel away from the rear case.
- Repeat this process for the other side of the front bezel.
- ① It may be necessary to apply several layers of duct tape to the top of the access card to aid in releasing the latches.
- ① If the bezel refuses to release, try pressing the lower edge back onto the rear case and repeat this opening process.

## Step 7



- Lay your iMac stand-side down on a table.
- Lift the front bezel from its lower edge and rotate it away from the rest of your iMac, minding the RAM arms that may get caught.
- Lay the front bezel above the rest of the iMac.

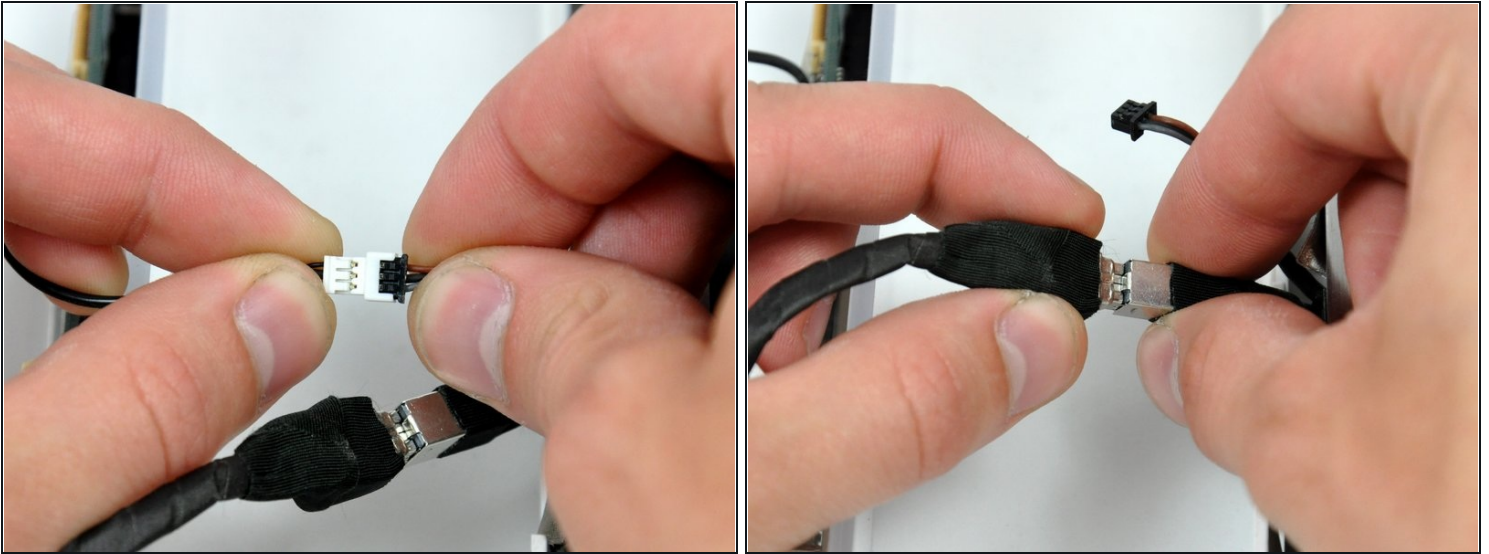
## Step 8



- If necessary, remove the piece of kapton tape wrapped around the microphone and camera cables.



## Step 9



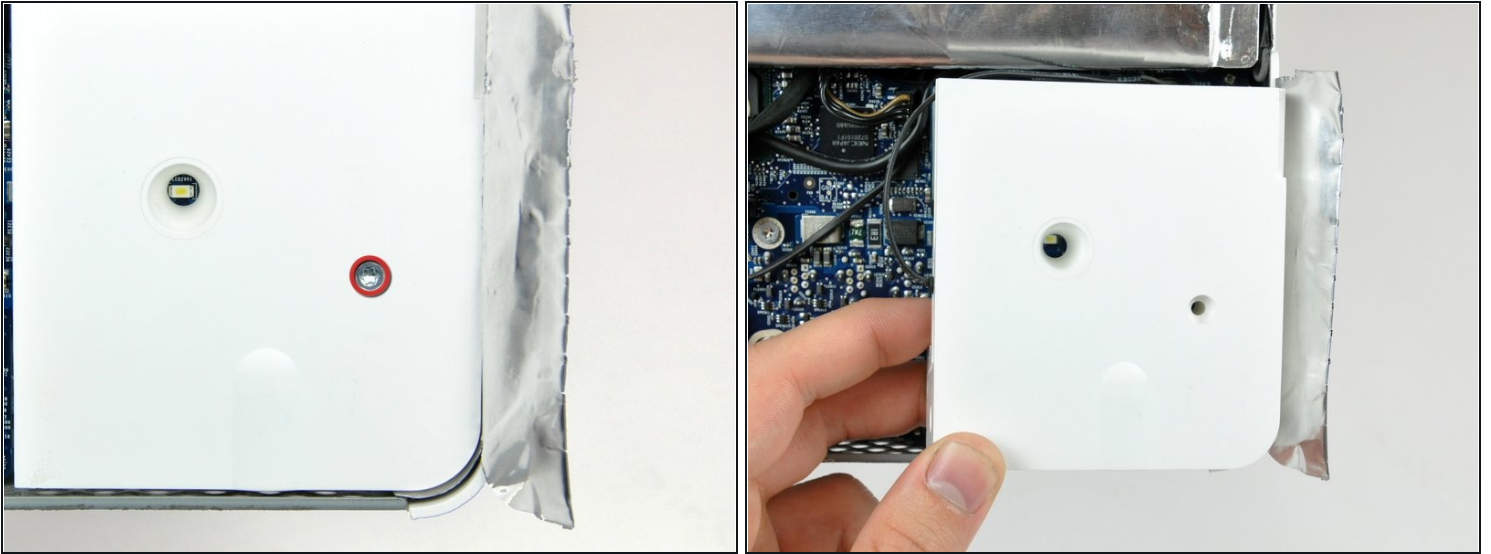
- Disconnect both the camera and microphone cables.

## Step 10 — AirPort/Bluetooth Board



- Peel back the aluminum EMI shield up off the lower three edges of the rear case.
- ① It is not necessary to peel the EMI shield off the display.
- ① We found it helpful to tape the EMI shield up against the display to keep it out of the way.

## Step 11



- Remove the single T10 Torx screw securing the right speaker to the rear case.
- Pull the rear speaker out of the rear case, and move it out of the way.
- ① It is not necessary to disconnect the right speaker.

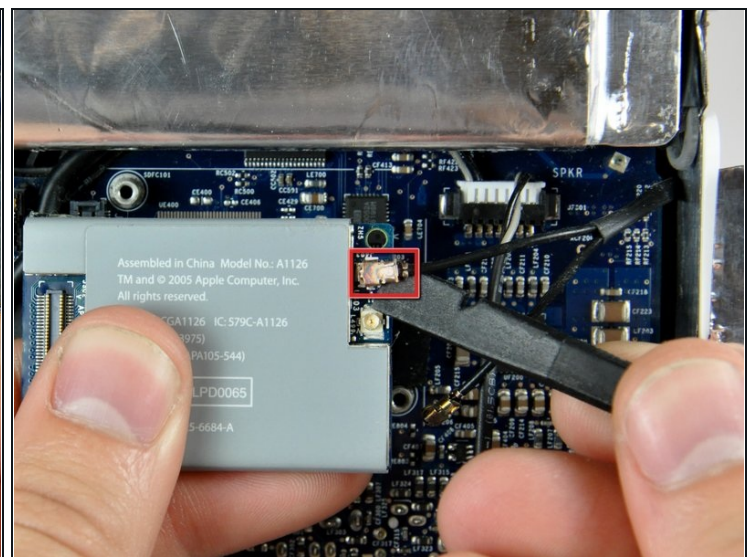


## Step 12



- Remove the two T6 Torx screws securing the AirPort/Bluetooth board to the logic board.
  - Lift the AirPort/Bluetooth board up from its left edge to separate it from its socket on the logic board.
- ⚠ Lift the AirPort/Bluetooth board from its left edge **only**. Trying to lift from its right edge may break the socket off the logic board.

## Step 13



- Use the flat end of a spudger to pry the AirPort and Bluetooth antenna connectors up off the AirPort/Bluetooth board.

---

To reassemble your device, follow these instructions in reverse order.