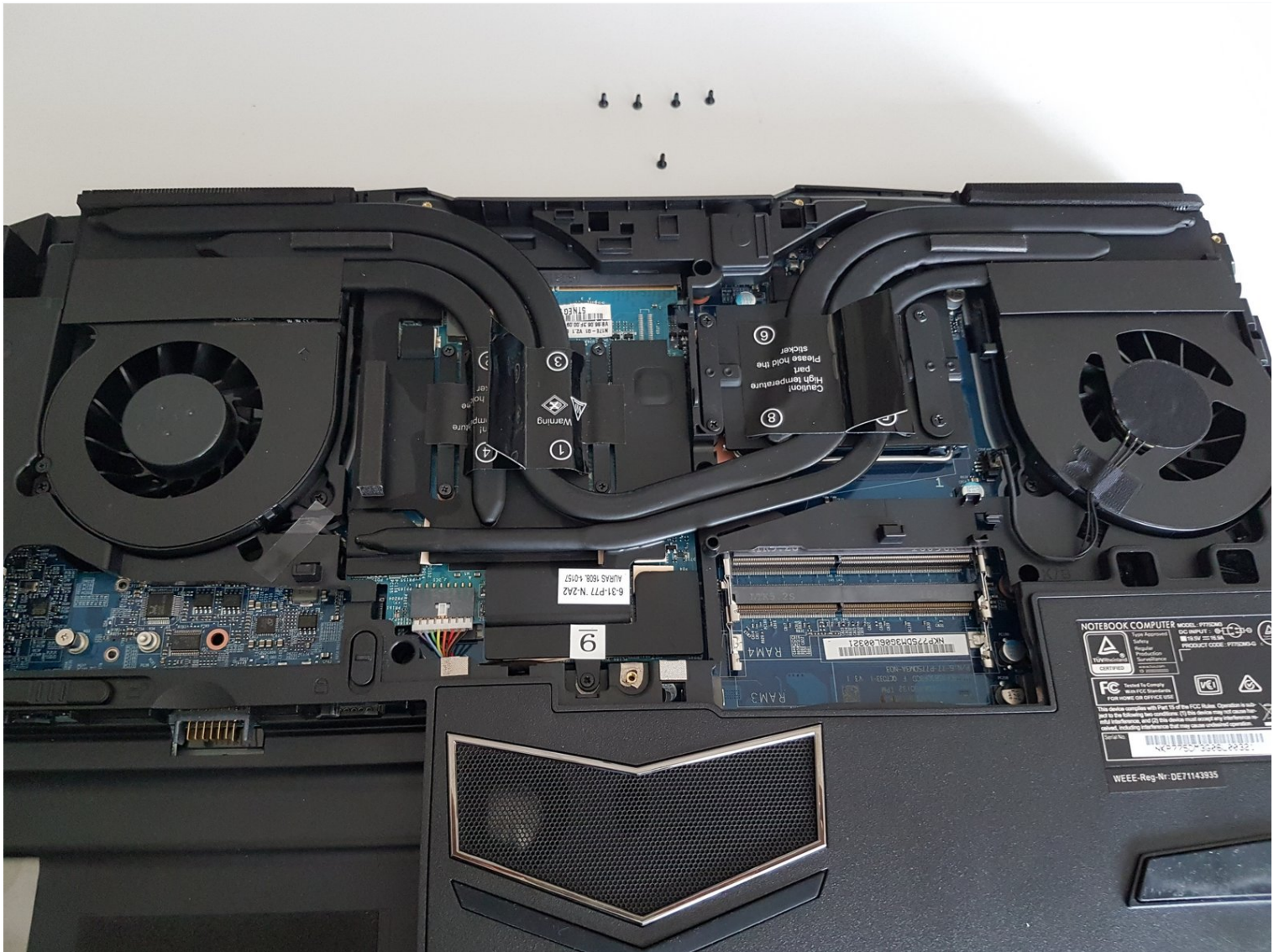




# P775DM3 Access to major components

Written By: Felice Suglia

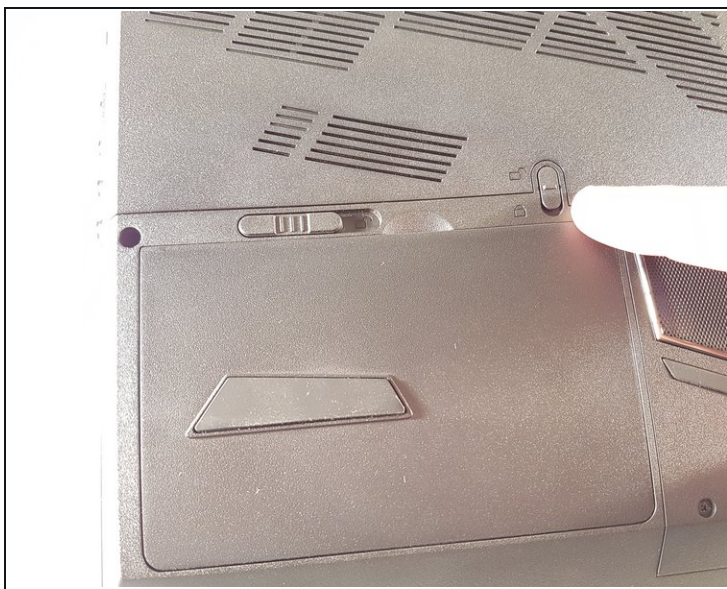
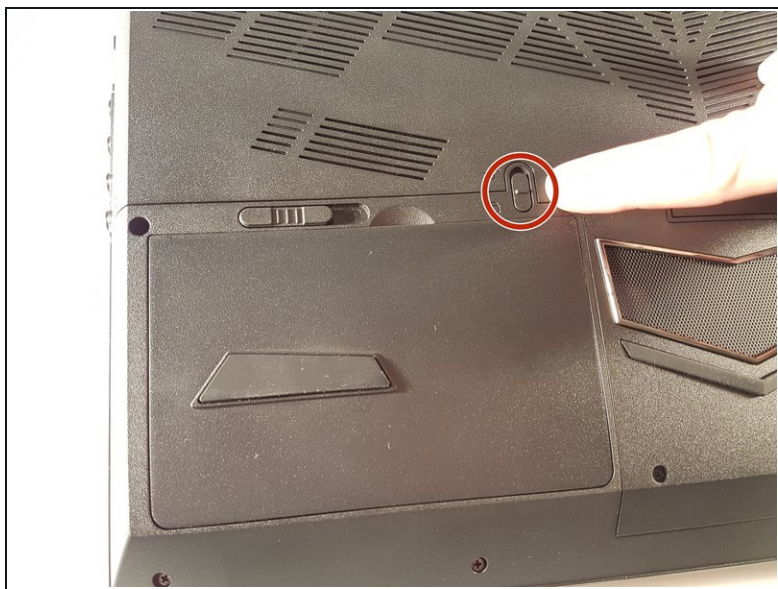




## TOOLS:

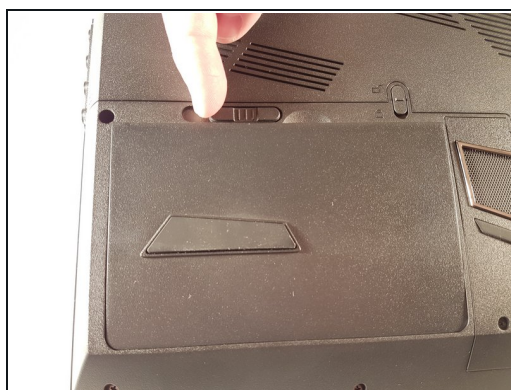
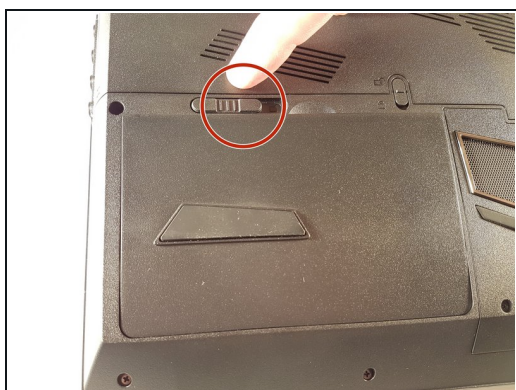
Tournevis cruciforme #0 (1)

### Step 1 — Battery



- Unlock the lock circled in red.

### Step 2



- Lift the battery while unlocking the lock circled in red.

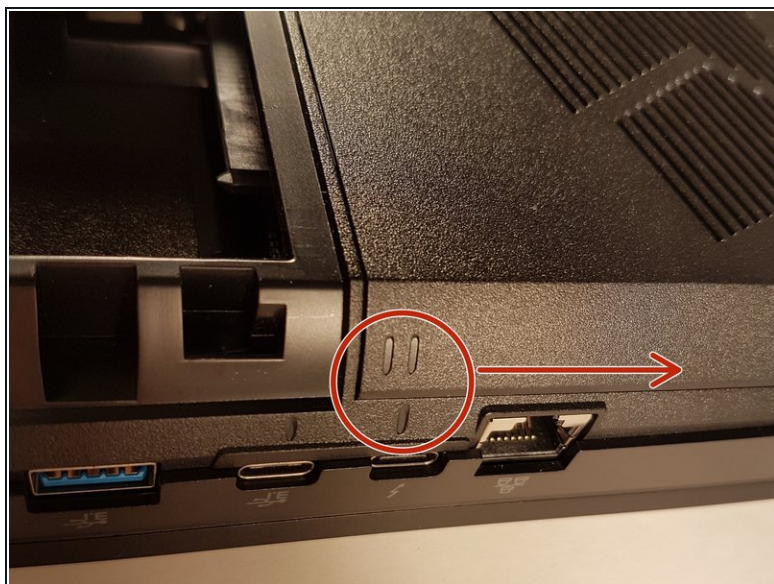


### Step 3 — Access to major components



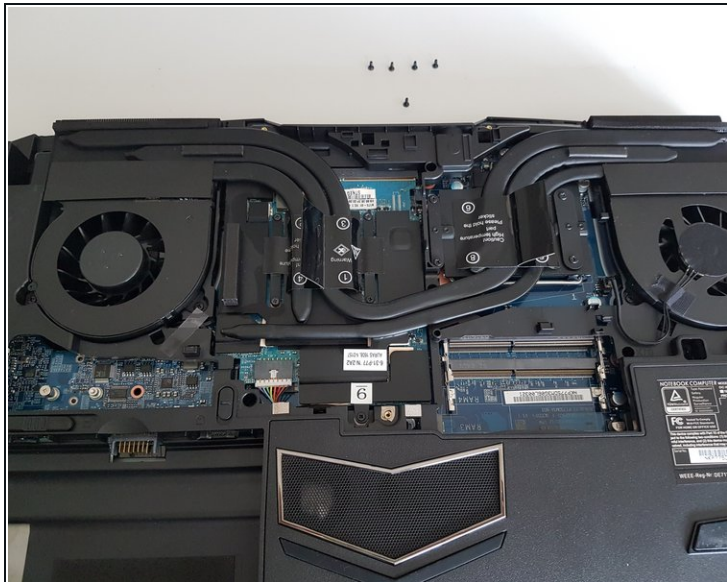
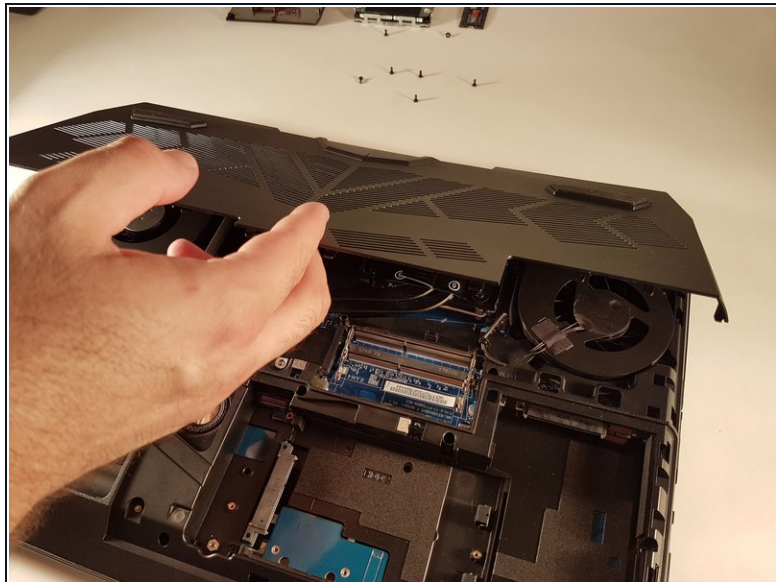
- Unscrew the five screws circled in red.

### Step 4



- Slide the plate in the direction of the red arrow.

## Step 5



- Lift the plate.

To reassemble your device, follow the instructions in reverse order.