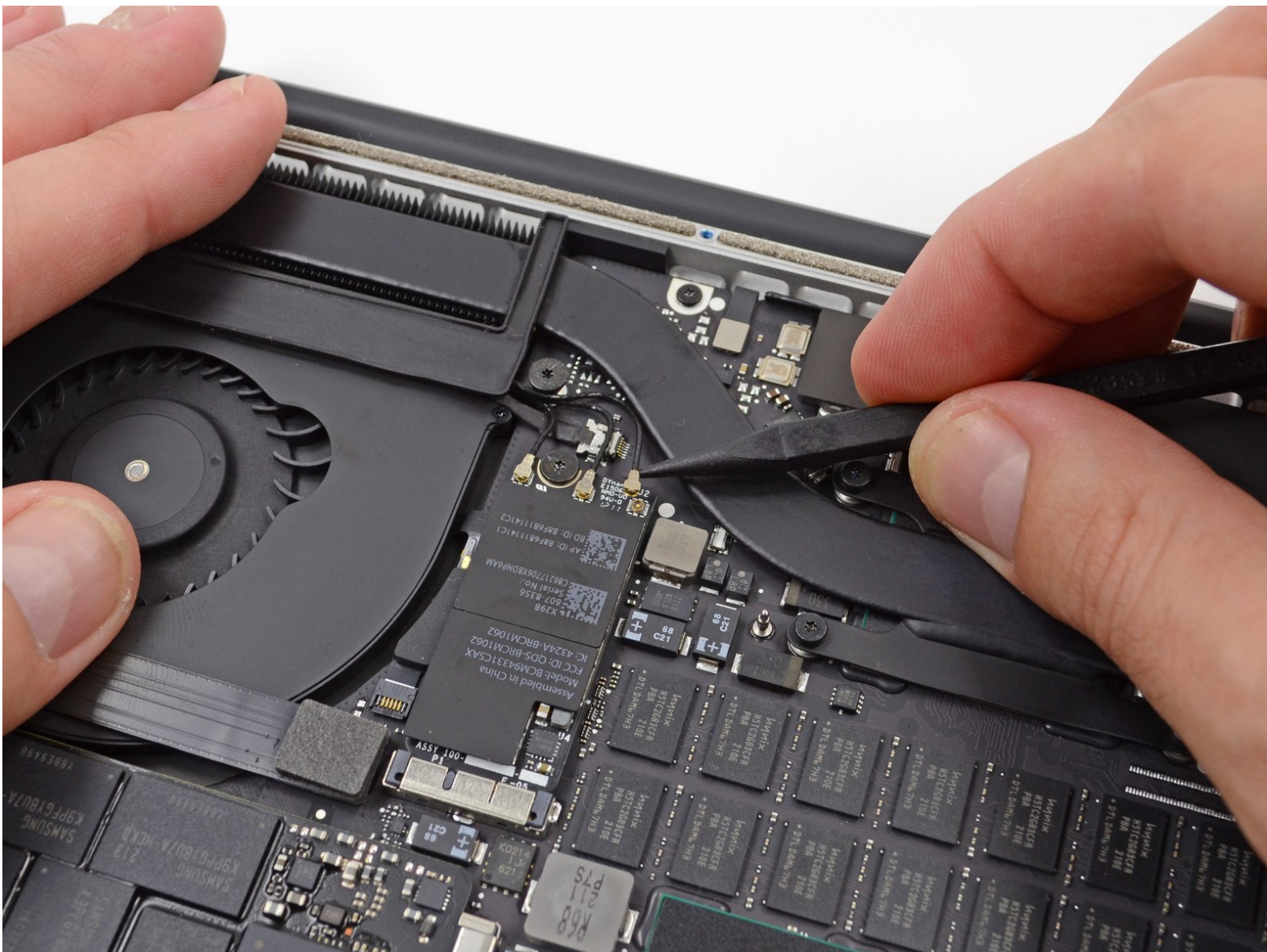




# MacBook Pro 15" Retina Display Mid 2012

## AirPort/Camera Cable Replacement

Written By: Brett Hartt



---

# INTRODUCTION

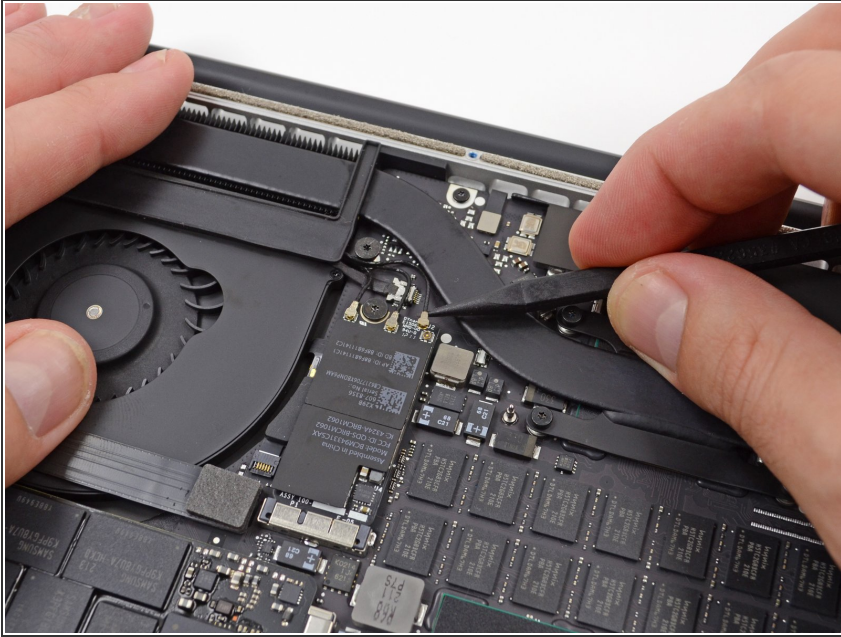
Prereq only.



## TOOLS:

- [Spudger](#) (1)
-

## Step 1 — AirPort/Camera Cable

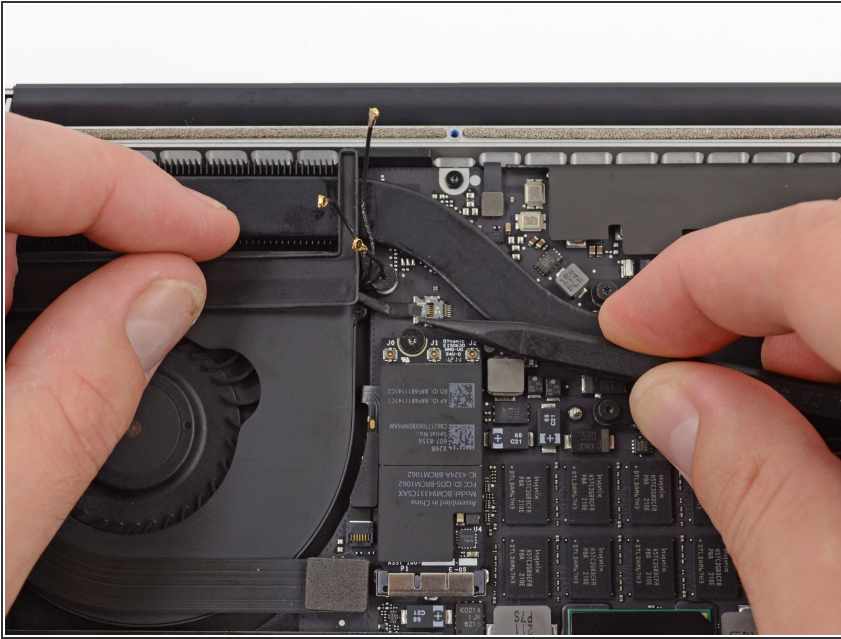


- Use a spudger or tweezers to pry the three AirPort antenna cables straight up off of their sockets on the AirPort board.

⚠ The cable connection points are fragile. Be careful to lift only on the connector, and not on the socket or cable.

- ☑ To reconnect, align the connector carefully into position over the socket, and press it down firmly with the flat of your spudger.

## Step 2



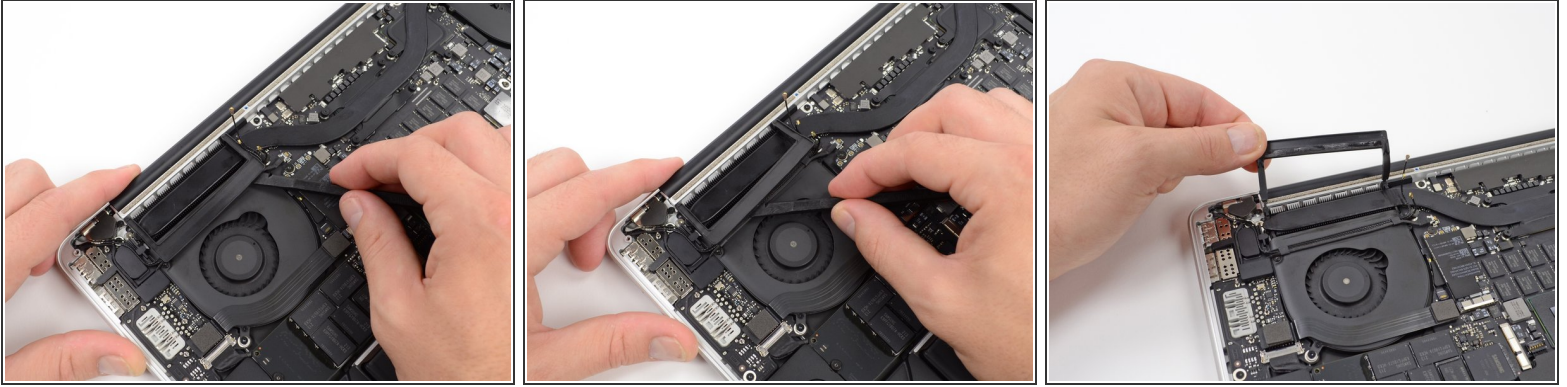
- Use the tip of a spudger to push the camera cable's plug toward the fan and out of its socket on the logic board.

- ⓘ The plug in the photo has six connections, but some models have twelve connections. The process of removing the plug from its socket is the same for both.
- ⓘ If the camera cable's plug won't come easily out of its socket on the logic board, fold back the rubber cover over the fan to gain access to the cable, then gently pull on the cable while using the spudger to gently push the plug out of its socket.

⚠ Be sure to push parallel to the board, first on one side, then the other, to slowly "walk" the plug out of its socket. Do not pry up, or you will damage the socket.

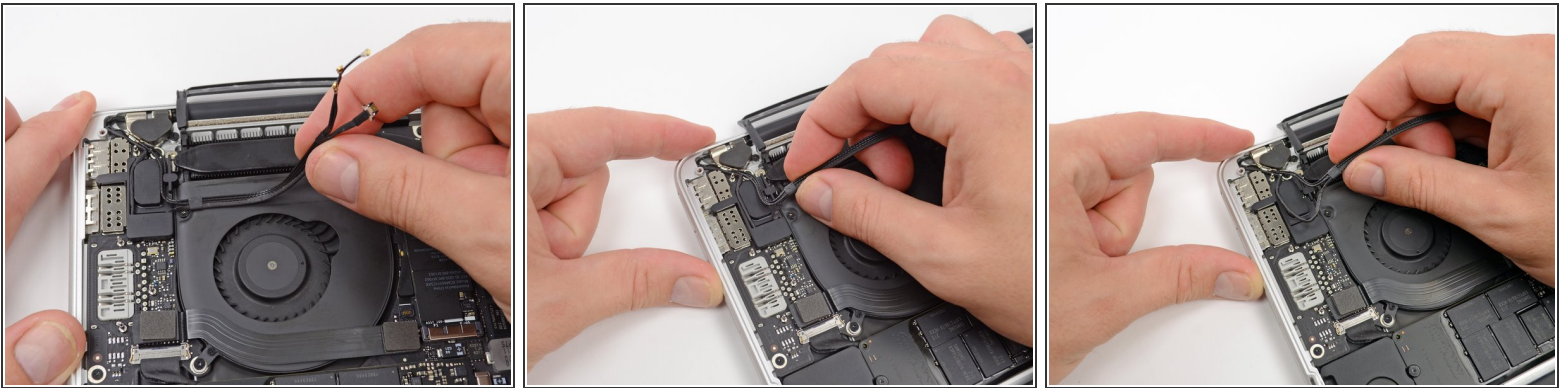


### Step 3



- Insert the flat end of a spudger underneath the rubber heat sink cover on the right fan.
- Slide the spudger underneath the length of the cover, releasing the adhesive.
- Lift the cover and flip it back so that you can access the cables underneath.

### Step 4



- Use your fingers to pull the AirPort/Camera cables up off the fan.
  - ⓘ The cables are adhered to the fan, so peel them up carefully to avoid damaging them.
- Carefully de-route the cables from the plastic cable guide.

To reassemble your device, follow these instructions in reverse order.