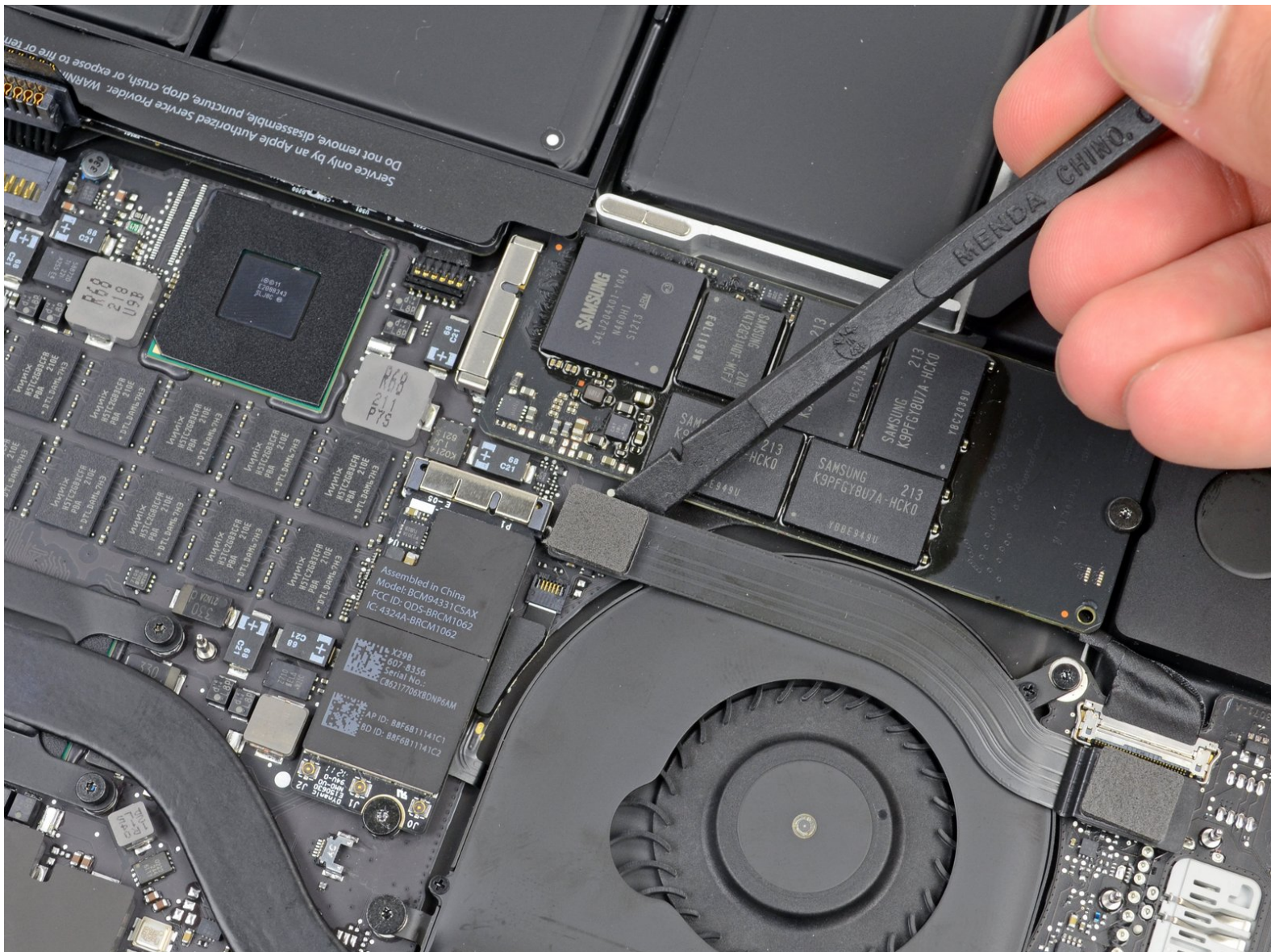




MacBook Pro 15" Retina Display Mid 2012 I/O Board Cable Replacement

Pre-req only

Written By: Brett Hartt

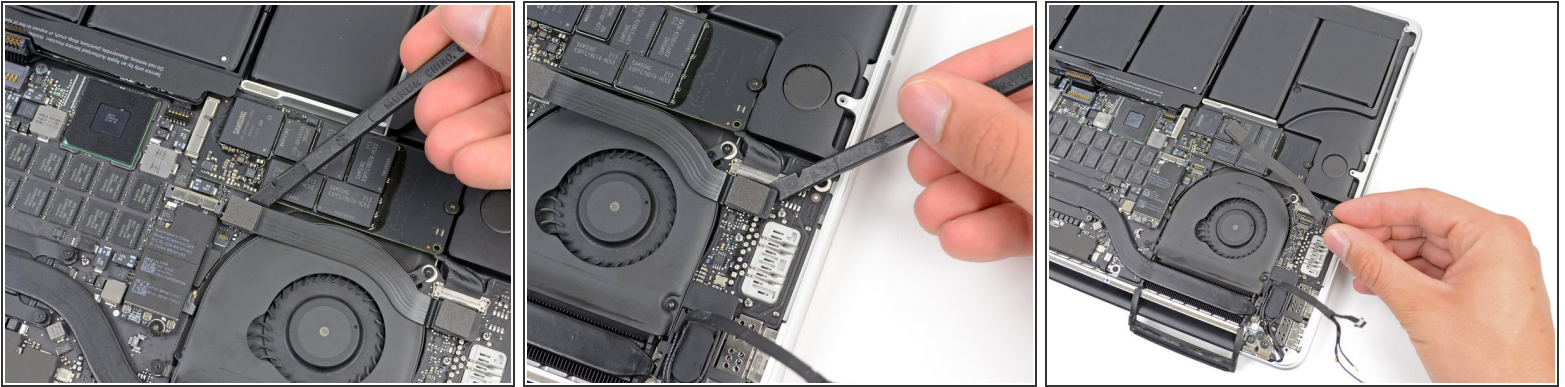




TOOLS:

- [Spudger](#) (1)
-

Step 1 — I/O Board Cable



- i** If your I/O Board cable's connectors have [notches in the padding](#), you will need to **release a locking lever underneath the notch** in order to remove the cable. If this is the case, **don't pry up on the connector until the levers are unlatched**.
- Using the flat end of a spudger, pry the I/O Board connector straight up out of its socket on the logic board.
 - ☒ During reassembly, connect this end first, as it does not flex.
 - In a similar fashion, remove the I/O Board cable connector from its socket on the I/O Board.
 - Remove the I/O Board cable from the MacBook Pro.

To reassemble your device, follow these instructions in reverse order.