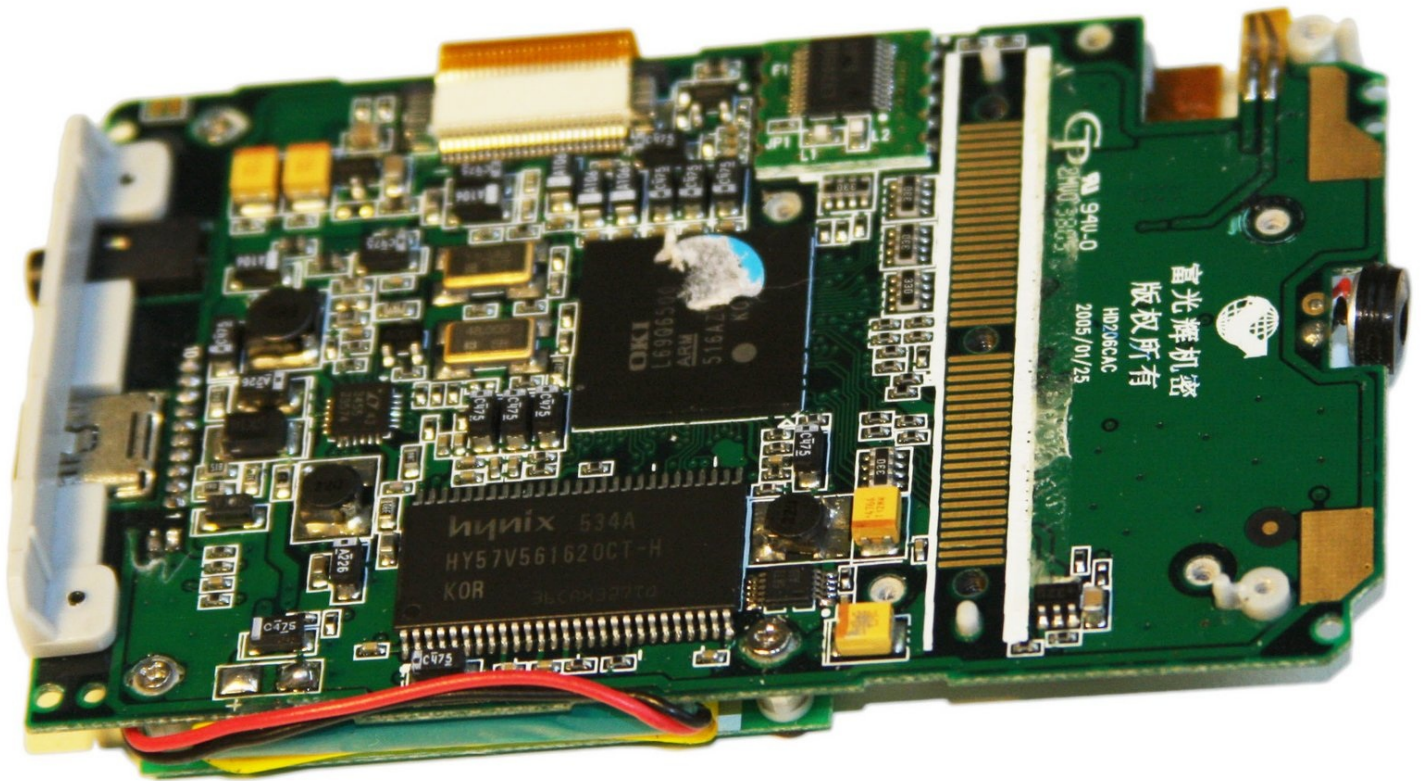




Cirago M9030 Motherboard Replacement

Written By: Ryan Sutardji



TOOLS:

[iFixit Opening Tool](#) (1)

[Phillips #00 Screwdriver](#) (1)

Step 1 — Cover



- Use a Phillips #00 screwdriver to unscrew the four 1.1mm long screws on each corner located at the top of the cover.

Step 2



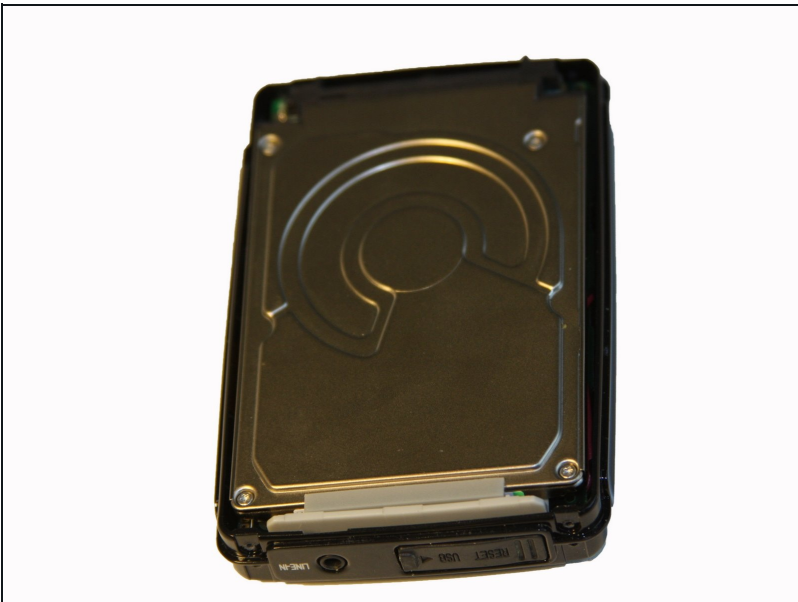
- Similar to the last step, flip the cover over and use a Phillips #00 screwdriver to unscrew the four 1.1mm long screws on each corner located at the bottom of the cover.
- Remove the warranty sticker across the bottom.

Step 3



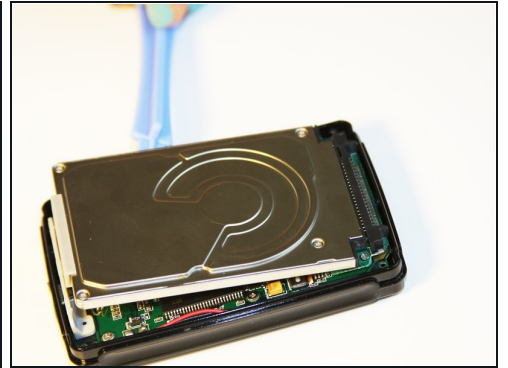
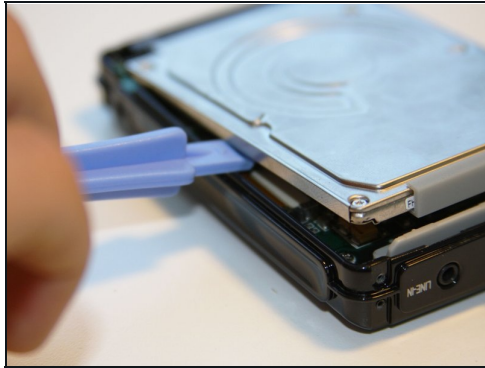
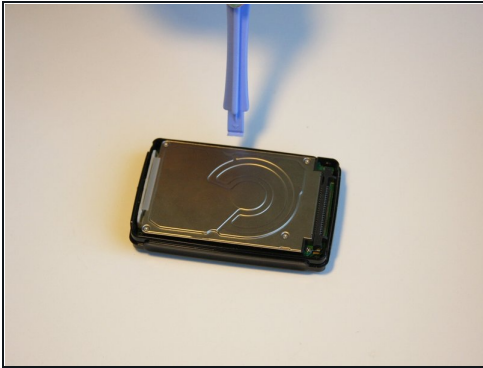
- Gently take the cover apart using your hands separating the top and bottom.
- The outer shell is expected to easily come apart.

Step 4 — Hard Drive



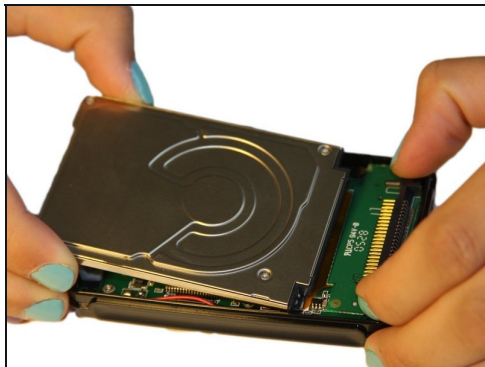
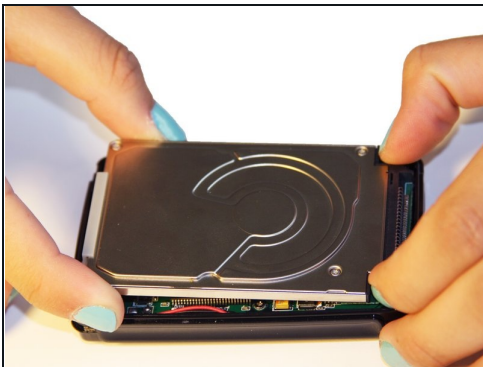
- Make sure that the screen of the device is facing down.

Step 5



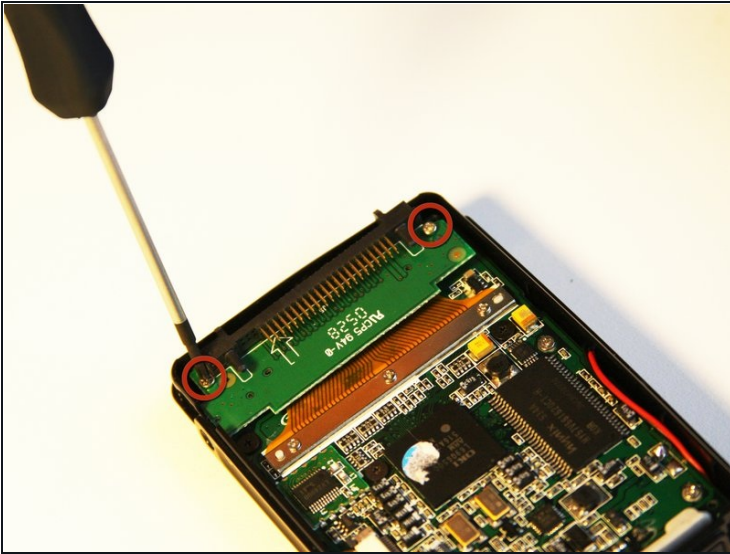
- Using the plastic opening tool, wedge the tool underneath the bottom left edge of the hard drive.
- Raise the bottom edge of the hard drive 15 degrees up from the device.

Step 6



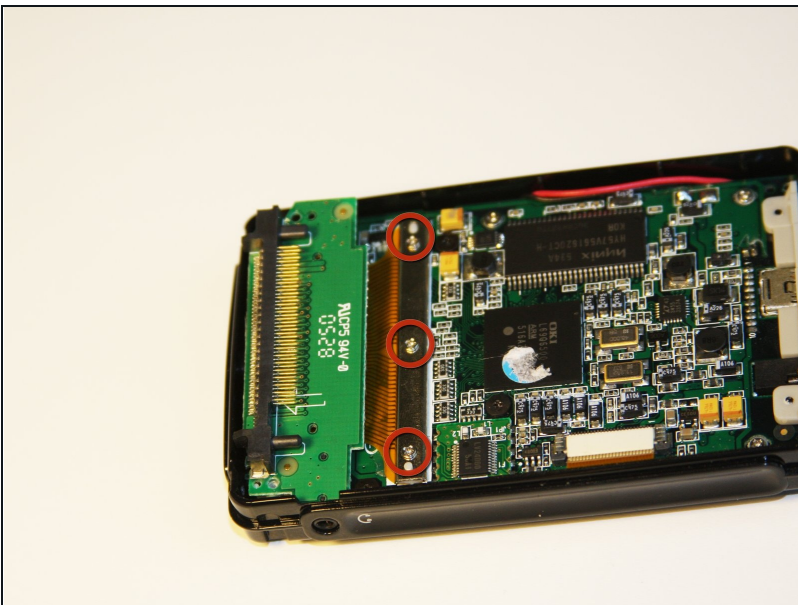
- Place fingers on the IDE connectors gently picking up and sliding the hard drive out from the IDE module.

Step 7 — IDE Connector



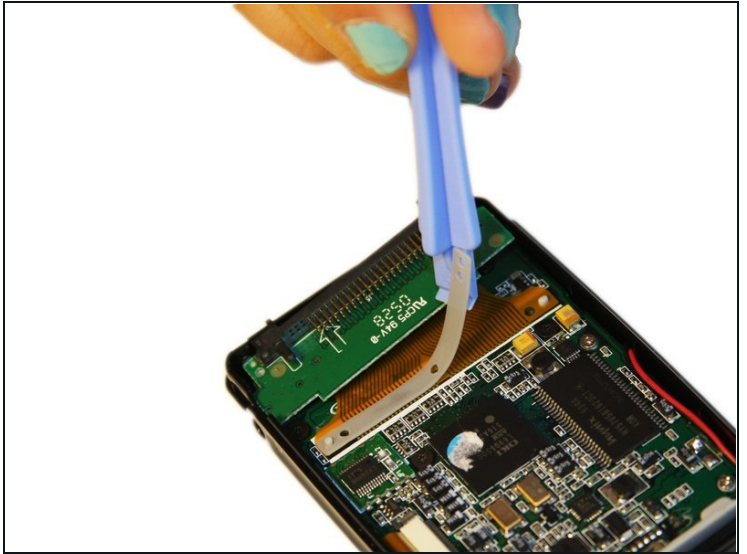
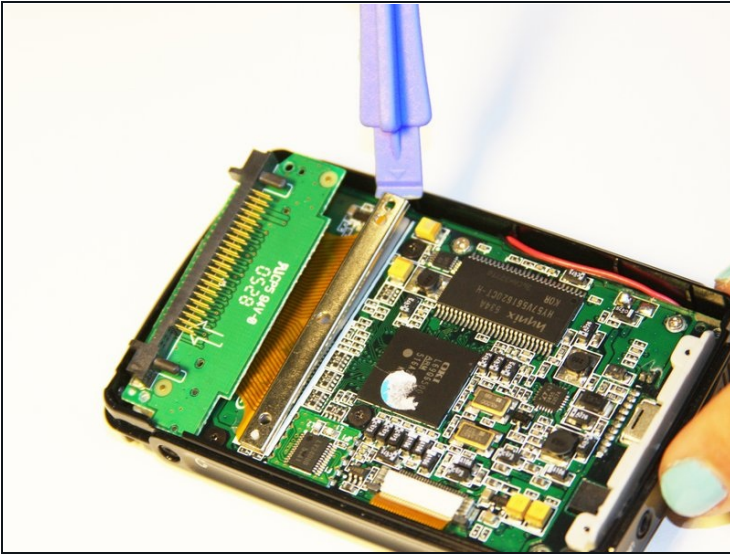
- Using the Phillips #00 screwdriver, unscrew the two 1.5mm long screws holding the IDE connector to the motherboard located at the top.

Step 8



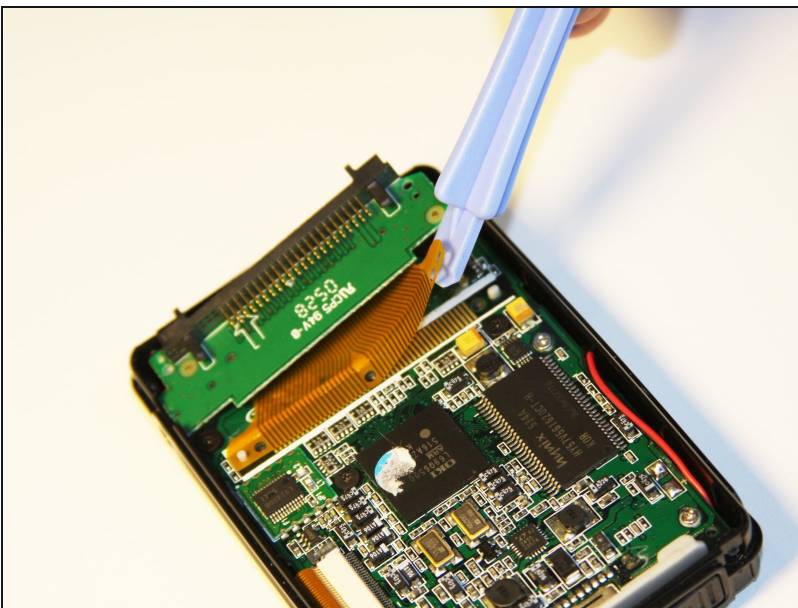
- Using the Phillips #00 screwdriver, unscrew the three 1.5mm long screws on the metal bracket.

Step 9



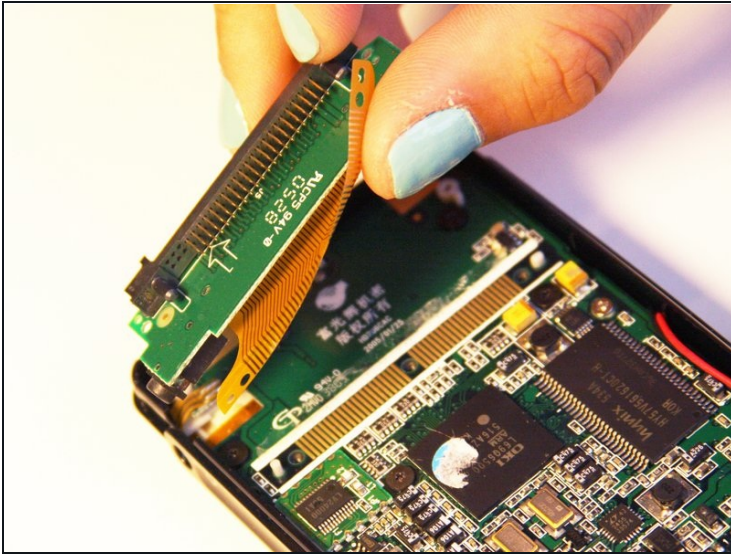
- Using the plastic opening tool, completely lift the metal bracket off of the motherboard.
- Using the plastic opening tool, completely lift the rubber insulator off of the motherboard.

Step 10



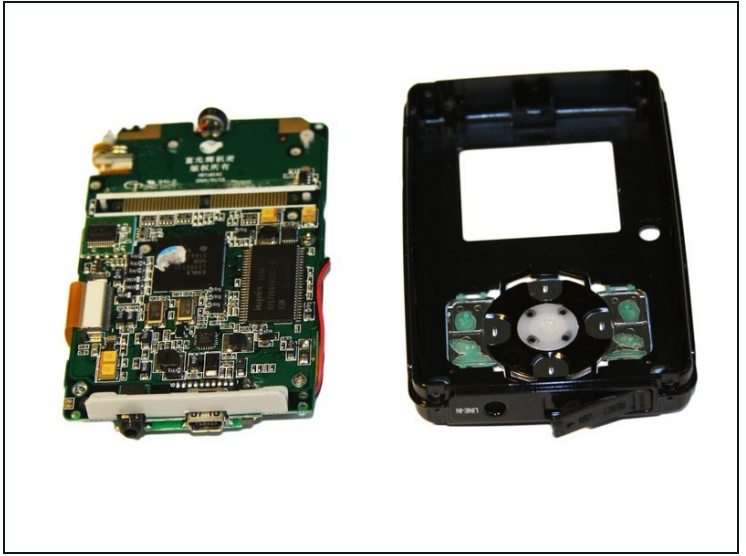
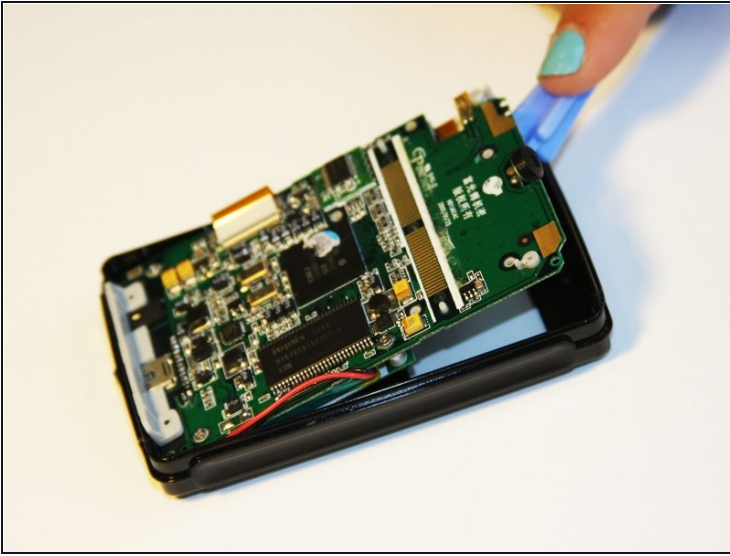
- Using the plastic opening tool, completely lift the ribbon off of the motherboard.

Step 11



- Completely remove the IDE connector from the device.
- The audio jack is attached to the IDE connector. Pull at a 45 degree angle from the audio jack.

Step 12 — Motherboard



- Using the plastic opening tool, wedge the tool underneath the top edge of the motherboard.
- Completely remove the motherboard.
- ① The motherboard should slide out easily.

To reassemble your device, follow these instructions in reverse order.