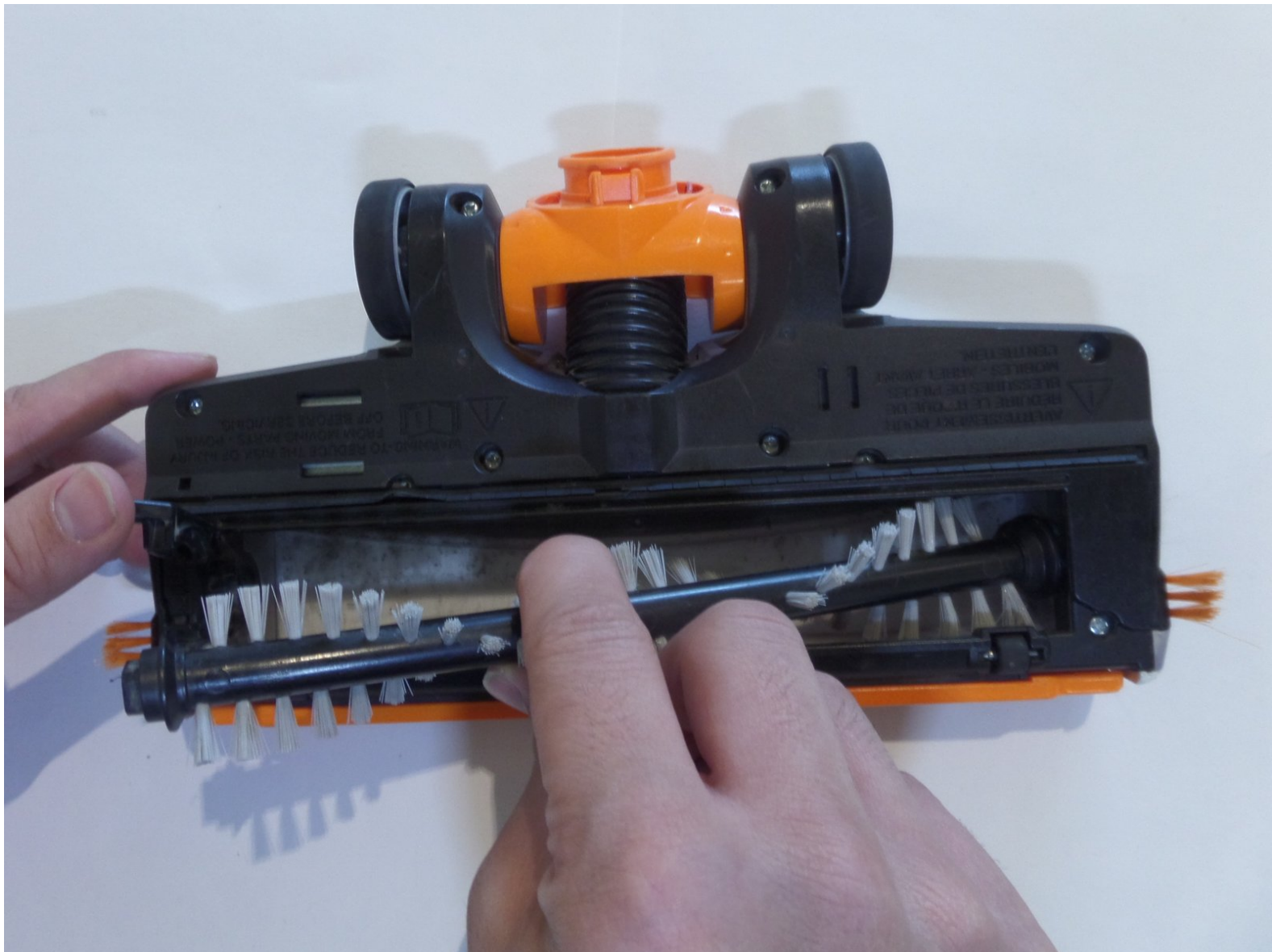




# Bissell Bolt ION 2-in-1 Cordless Brush Replacement

This guide will detail each step necessary to replace the brush roll on a Bissell Bolt ION 2-in-1 Cordless vacuum.

Written By: Benjamin Bautista



# INTRODUCTION

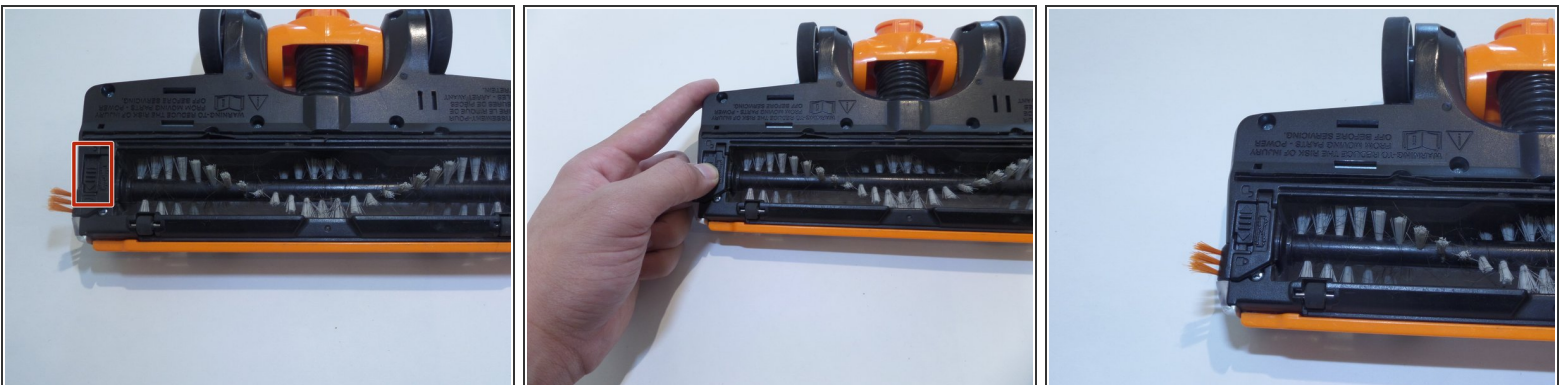
This guide will detail each step necessary to replace the brush roll on a Bissell Bolt ION 2-in-1 Cordless vacuum.

## Step 1 — Brush Roll



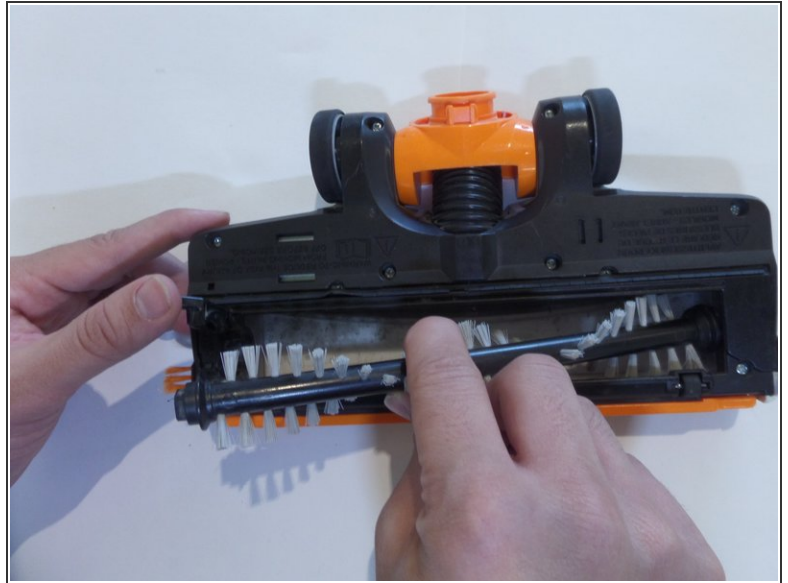
- Push the release button on the back side of the device near the swivel head, to detach the swivel for convenient access to the brush roll.

## Step 2



- The guard notch will automatically be down in the locked position.
- Slide the guard notch to the unlocked position.

## Step 3



- Lift up the latch to the right of the guard notch to access the brush.
- While holding up the latch remove the brush.
- ☑ Hold up latch to place new brush roll back into place.

To reassemble your device, follow these instructions in reverse order.