



Archived

# LG G6 Motherboard Replacement

Use this guide to replace the motherboard on...

Written By: David Pugliese



# INTRODUCTION

Use this guide to replace the motherboard on your LG G6.

## TOOLS:



Phillips #000 Screwdriver (1)  
Metal Spudger (1)  
Spudger (1)  
Plastic Cards (1)  
iOpener (1)  
Suction Handle (1)  
Halberd Spudger (1)  
iFixit Opening Picks (Set of 6) (1)  
Tweezers (1)

## PARTS:

Tesa 61395 Double-Sided Tape (2)  
*Thin, high-bond tape is required if the replacement part does not come with adhesive.*  
LG G6 Motherboard (1)

## Step 1 — iOpener Heating



-  We recommend that you clean your microwave before proceeding, as any nasty gunk on the bottom may end up stuck to the iOpener.
- Place the iOpener in the center of the microwave.
  -  **For carousel microwaves: Make sure the plate spins freely. If your iOpener gets stuck, it may overheat and burn.**

## Step 2



- Heat the iOpener for **thirty seconds**.
- Throughout the repair procedure, as the iOpener cools, reheat it in the microwave for an additional thirty seconds at a time.

⚠ Be careful not to overheat the iOpener during the repair. Overheating may cause the iOpener to burst. Do not attempt to heat over 100°C (212°F).

⚠ Never touch the iOpener if it appears swollen.

⚠ If the iOpener is still too hot in the middle to touch, continue using it while waiting for it to cool down some more before reheating. A properly heated iOpener should stay warm for up to 10 minutes.

## Step 3



- Remove the iOpener from the microwave, holding it by one of the two flat ends to avoid the hot center.

⚠ The iOpener will be very hot, so be careful when handling it. Use an oven mitt if necessary.

## Step 4 — Alternate iOpener heating method



ⓘ If you don't have a microwave, follow this step to heat your iOpener in boiling water.

- Fill a pot or pan with enough water to fully submerge an iOpener.
  - Heat the water to a boil. **Turn off the heat.**
  - Place an iOpener into the hot water for 2-3 minutes. Make sure the iOpener is fully submerged in the water.
  - Use tongs to extract the heated iOpener from the hot water.
  - Thoroughly dry the iOpener with a towel.
- ⚠ The iOpener will be very hot, so be careful to hold it only by the end tabs.
- Your iOpener is ready for use! If you need to reheat the iOpener, heat the water to a boil, turn off the heat, and place the iOpener in the water for 2-3 minutes.

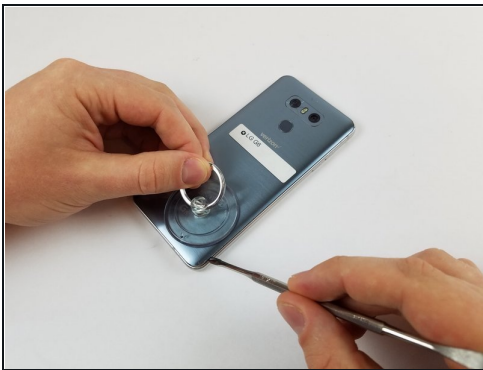


## Step 5 — Battery



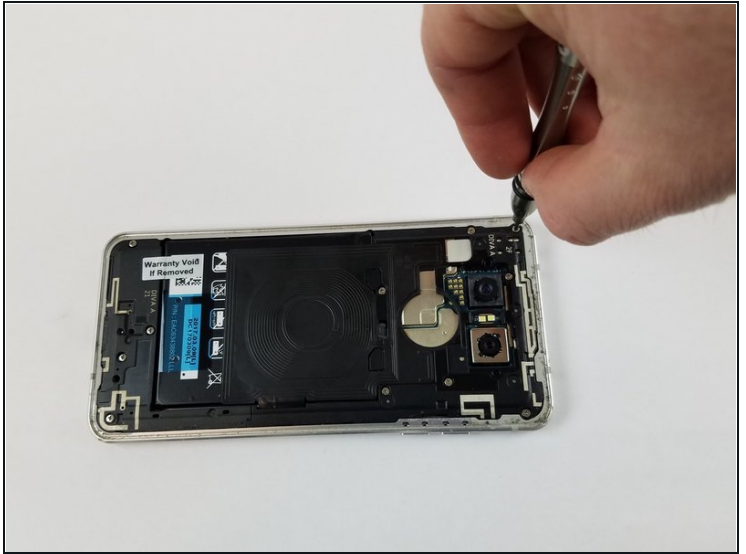
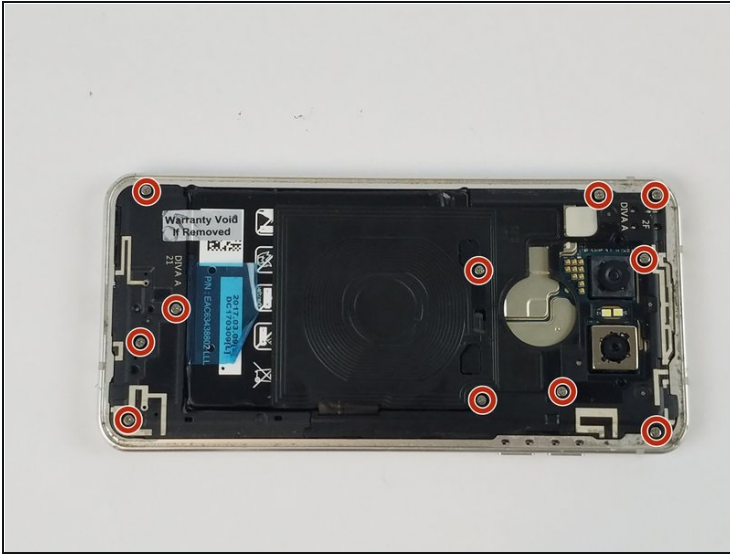
- Apply the heated iOpener to the edge of the phone for about 2 minutes.

## Step 6



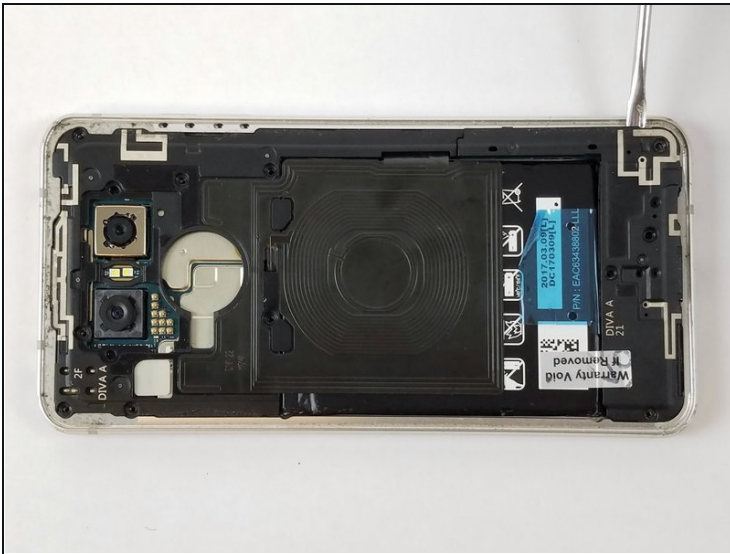
- When the back panel is heated, apply the suction cup close to a corner of the phone. Lift up and insert a halberd spudger or opening pick under the rear glass.
- Slide the blade of the Halberd spudger along the edge of the phone to separate the adhesive.
- Follow around the edge of the phone, and use an opening pick or other tool (such as a [plastic card](#)) to keep already opened portions from re-adhering.

## Step 7



- Using a Philips 000 bit, remove 11 screws from the highlighted locations.

## Step 8



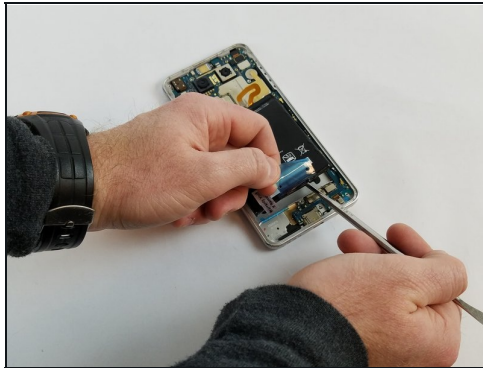
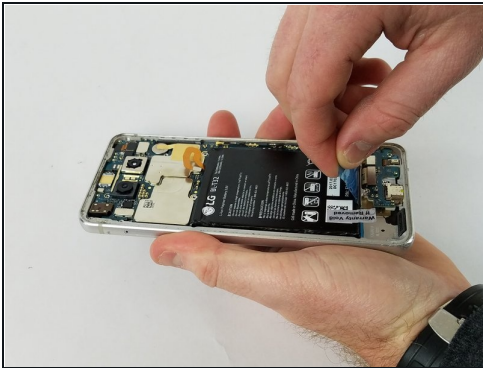
- With the screws removed, remove the lower frame components, followed by the upper mid-frame. Both components can be removed with a little prying.

## Step 9



- Begin battery removal by very gently prying off the power ribbon with a plastic card or a nylon spudger.

## Step 10

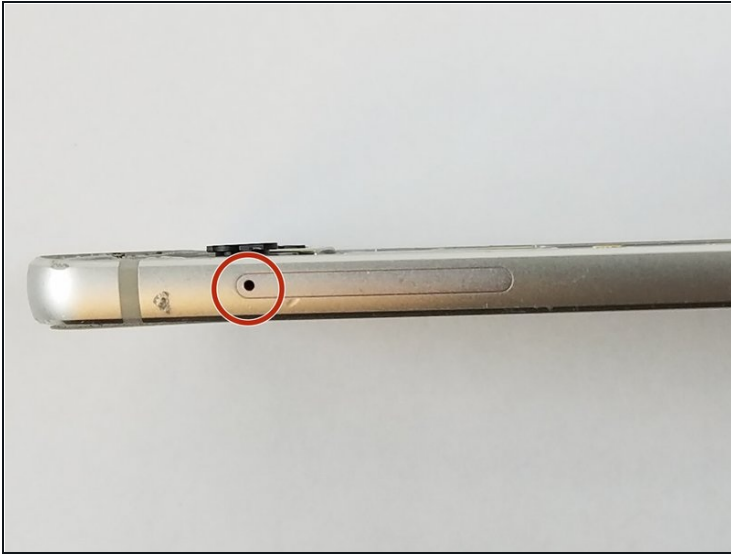


- Firmly pull the blue tab. Be careful not to bend the battery as you pull it away from the adhesive.

⚠ Do not use a knife as you may pierce the battery.

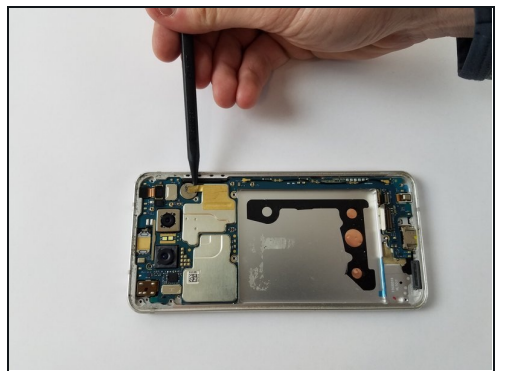


## Step 11 — Motherboard



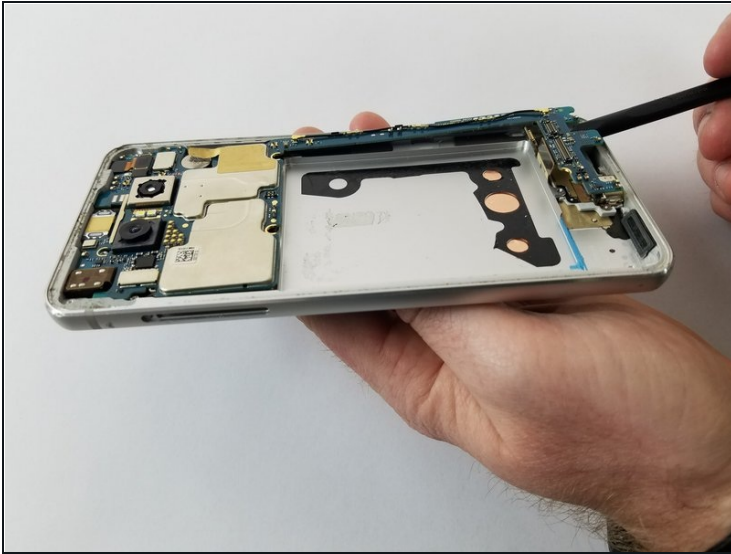
- Locate the sim card tray release mechanism on the right edge.
- Using the [tweezers](#), or similar thin and rigid tool, push in the release button and pull out the sim card tray.

## Step 12



- Gently pry off the two connectors at the bottom of the phone.
- Pry off the tape covering the vibrator.

## Step 13



- The motherboard is now removable by gently lifting.

⚠ Upon removal of the motherboard, the small plastic sim card tray release mechanism will be loose and may get lost.

---

To reassemble your device, follow these instructions in reverse order.