



# Osmo Mobile Bluetooth Module Replacement

This guide will show you step-by-step how to replace the Bluetooth module on the Osmo Mobile.

Written By: William Tyler Wills



## INTRODUCTION

If you are unable to connect to Bluetooth and you have tried all troubleshooting for connecting a phone to the device, the Bluetooth module may need to be replaced. This guide will explain how to replace a broken Bluetooth module to ensure proper connectivity with the device.

---

### TOOLS:

- [Star Bit Screwdriver](#) (1)
- [Phillips #00 Screwdriver](#) (1)
- [1.5mm Hex Screwdriver](#) (1)
- [Tweezers](#) (1)
- [Spudger](#) (1)
- [Phillips #0 Screwdriver](#) (1)

### PARTS:

- [DJI Osmo Mobile Trigger Button](#) (1)

## Step 1 — Osmo Mobile Handle Disassembly



- Remove gimbal from base handle by loosening round plate found at the top of the handle.

## Step 2



- Use Phillips #00 screwdriver to remove the three screws found on the gimbal stabilizer to detach handle from gimbal.
- Carefully detach handle from gimbal and disconnect the cable that connects the two.

### Step 3



- Locate the hex screws found at the top base of the handle, and unscrew using the 1.5mm hex screwdriver.

### Step 4



- Remove joystick by gently pulling away from handle



## Step 5



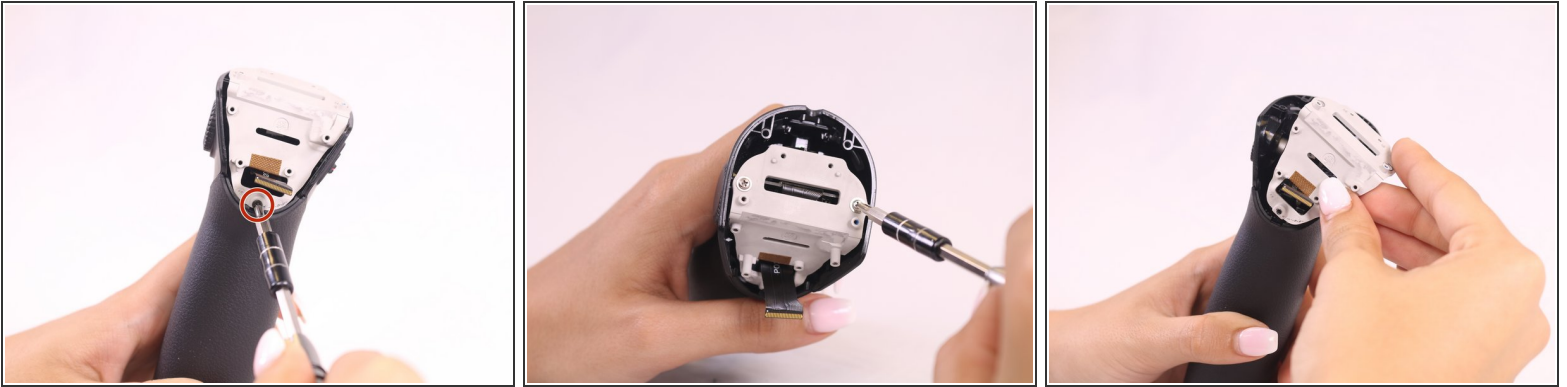
- Remove the quick release PCBA by locating the connecting wires and release the ribbon cable with tweezers.
- Use the spudger to pry open and remove the face plate, starting at the back of the handle.

## Step 6



- Locate four screws directly on top of handle.
- Unscrew the silver, bottom two screws, that are closest to the face plate using the 00 screwdriver.
- Unscrew the black, top two screws, located furthest from the face plate, using the 0 screwdriver.
- Remove the remaining two screws found on the front of the faceplate.
- Remove the rest of the face plate shell.

## Step 7 — Bluetooth Module



- Locate and remove the black screw found at the base of the grey mounting plate.
- Remove the grey face plate.

## Step 8



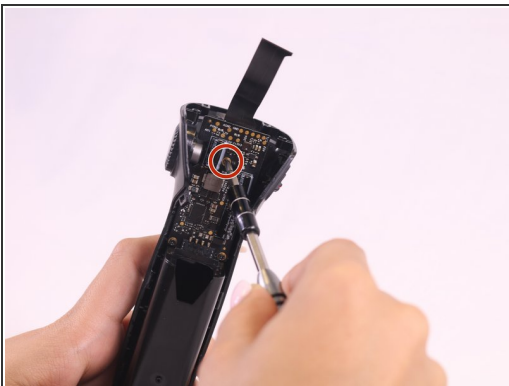
- Open the battery hatch and remove it by using the tweezers to press the hinge into the device.
- Remove the black screw located underneath where the battery hatch was.

## Step 9



- Use the spudger to remove the front handle casing by sliding the spudger into the area between the handle grooves.
- Slide the spudger around the groove to find the 6 clasps that hold the front part of the handle, and unclasp them.
- Take off the front handle section to reveal the whole interior of the device.

## Step 10



- Locate and remove the black screw in the center of the motherboard chip.
- Remove motherboard and replace.

To reassemble your device, follow these instructions in reverse order.