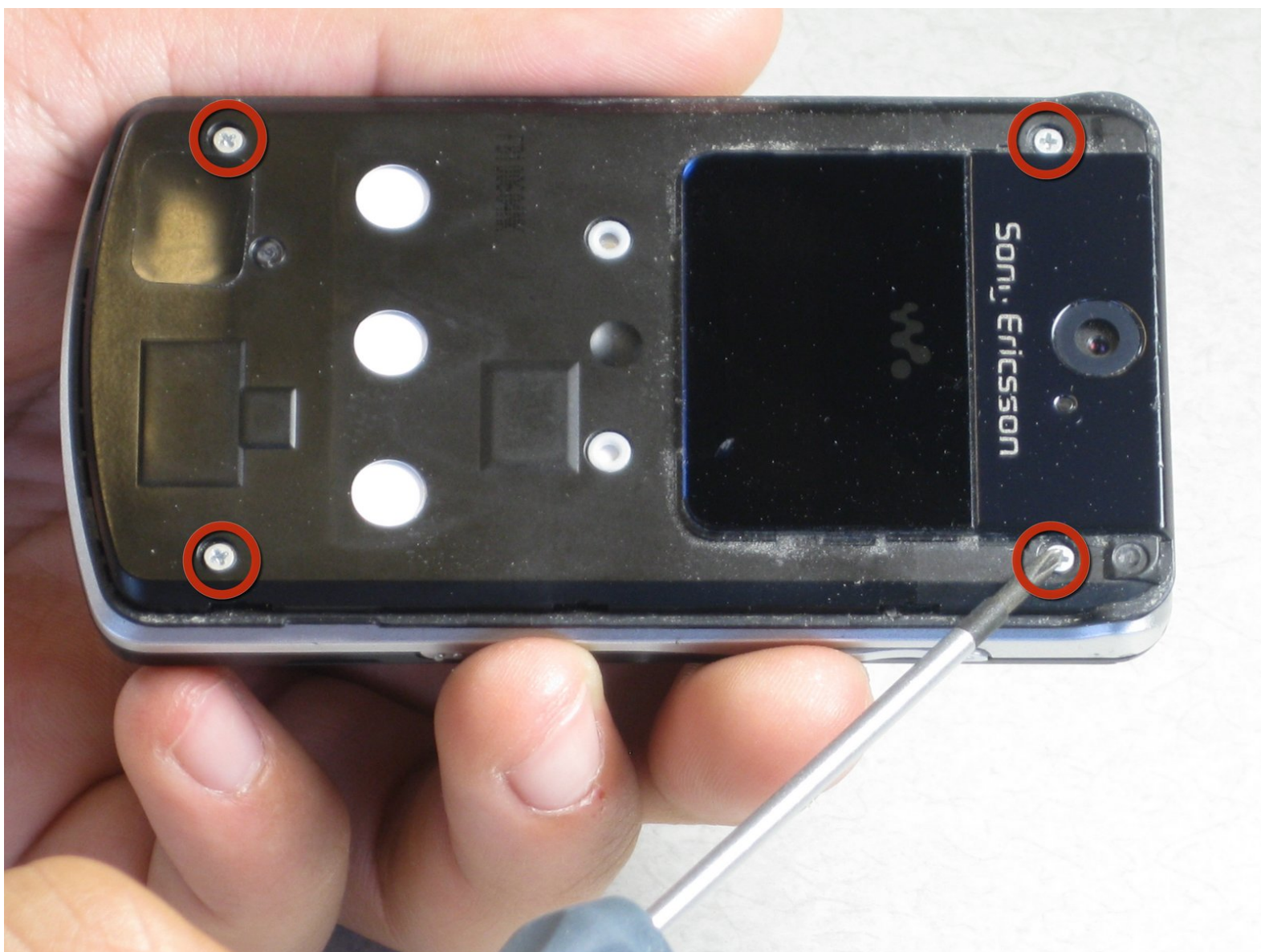




Sony Ericsson W518a Camera Lens Replacement

How to Remove and replace the camera lens of the Sony Ericsson w518a.

Written By: kgkramer



INTRODUCTION

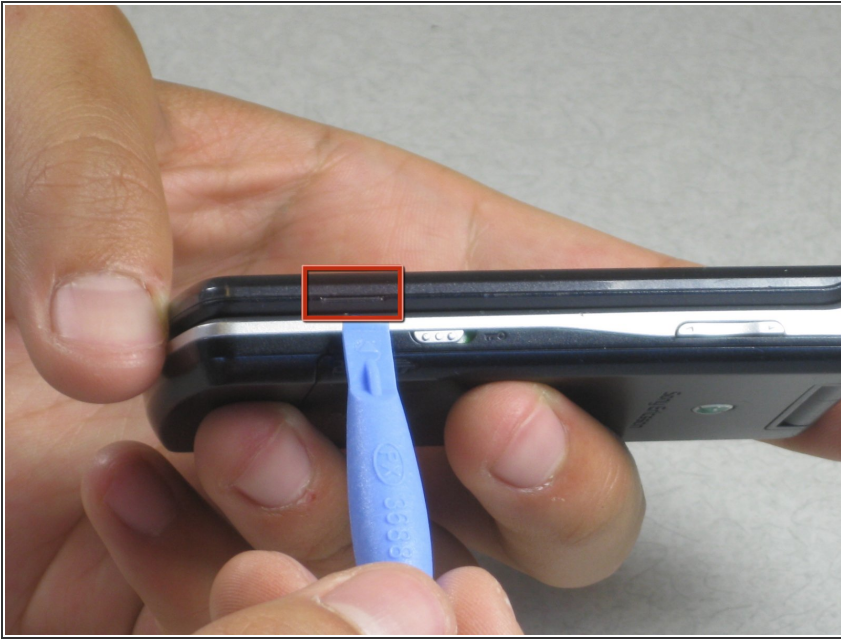
In this guide the back housing of the phone will be removed and the camera lens will be removed from the housing.



TOOLS:

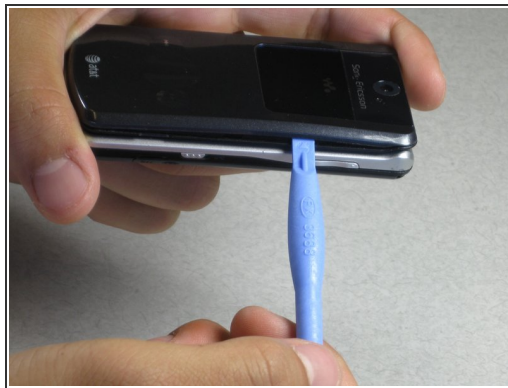
- [Phillips #00 Screwdriver](#) (1)
 - [iFixit Opening Tools](#) (1)
-

Step 1 — Faceplate



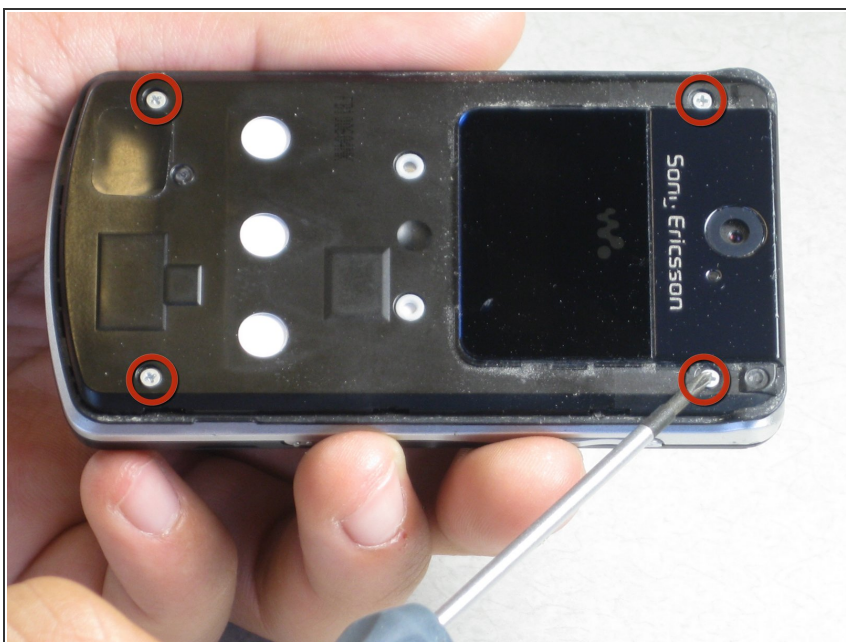
- Find the small notch on the side of the phone. The notch is located by the "fast-forward" button and the "lock" switch.

Step 2



- Insert your plastic opening tool into the notch.
 - Pry off the faceplate by gently sliding the plastic opening tool around the phone while still keeping the tool under the edge of the phone.
 - When enough of the faceplate has been lifted it can be easily removed.
- ✦ In order to replace the faceplate, simply press and snap the faceplate back onto the front of the phone.

Step 3 — Camera Lens



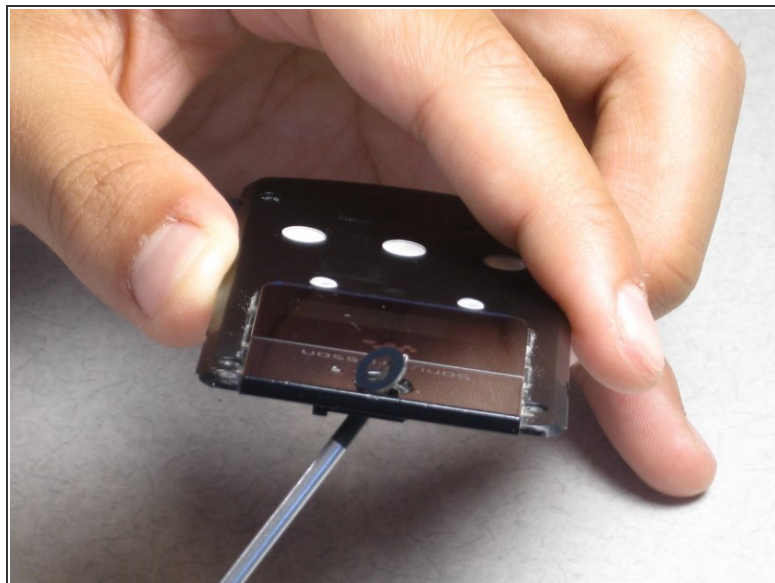
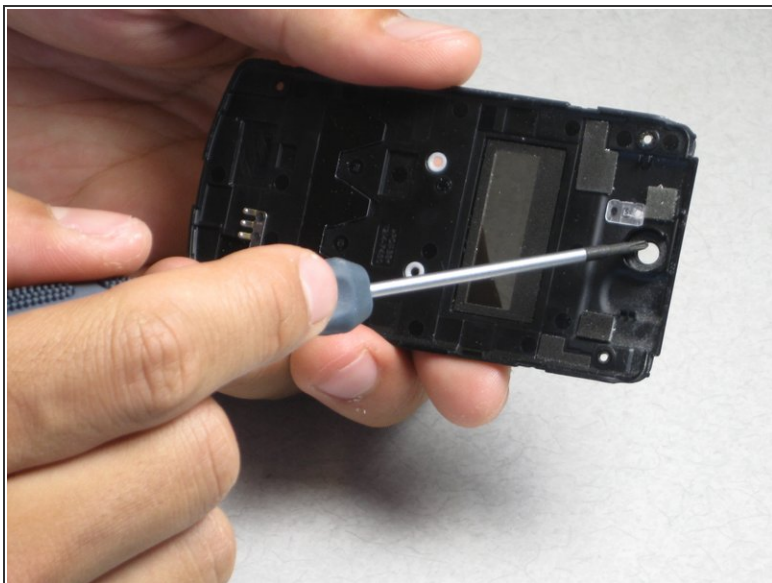
- Remove the four 2mm Phillips screws from the back housing of the phone.

Step 4



- Insert the plastic opening tool in the notch at the top corner of the phone.
- Lift the corner and run the plastic opening tool around the phone until the back housing can easily be removed.

Step 5



- Remove the lens by pushing the lens from the inside of the housing.

To reassemble your device, follow these instructions in reverse order.