



# Alienware 17 R2 Hard Drive Replacement

This guide will show you how to replace your...

Written By: Luis Garcia



# INTRODUCTION

This guide will show you how to replace your Hard Drive.



## TOOLS:

- [Phillips #0 Screwdriver](#) (1)



## PARTS:

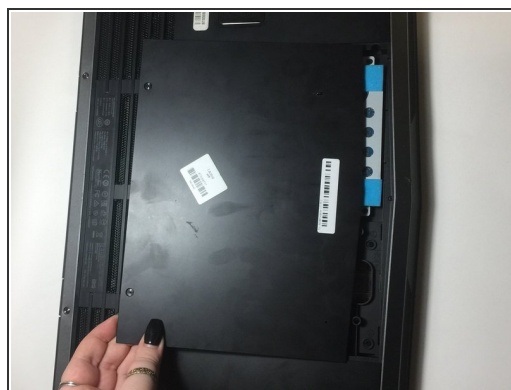
- [Crucial MX500 1 TB SSD](#) (1)
- [Crucial MX500 250 GB SSD](#) (1)
- [Crucial MX500 500 GB SSD](#) (1)
- [Crucial MX500 2 TB SSD](#) (1)

## Step 1 — Hard Drive



- Make sure the laptop is unplugged from any power source.
- Put the laptop facing down on a hard surface.

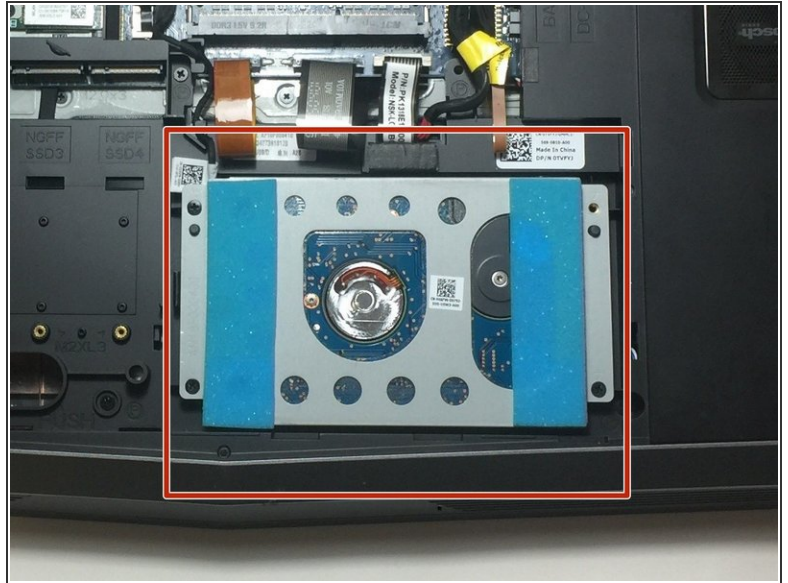
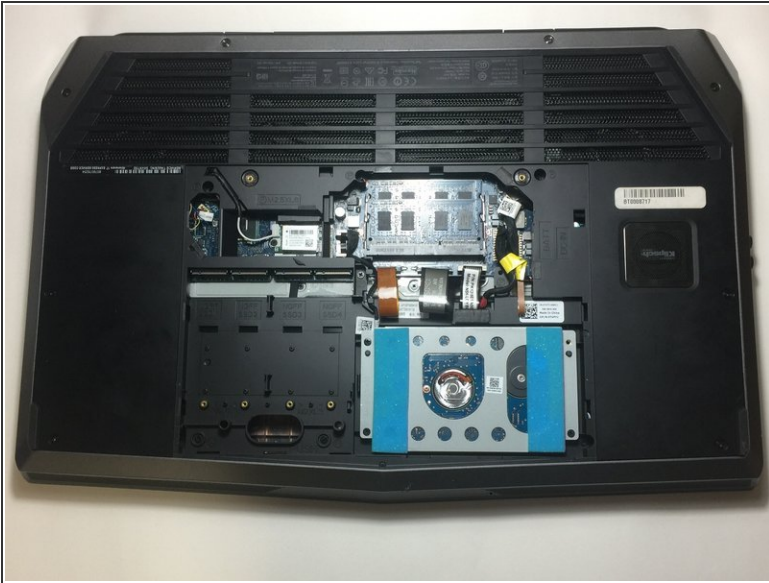
## Step 2



- Unscrew the two 6mm screws on the bottom side of the laptop.
- Lift up the back cover and slide towards you.

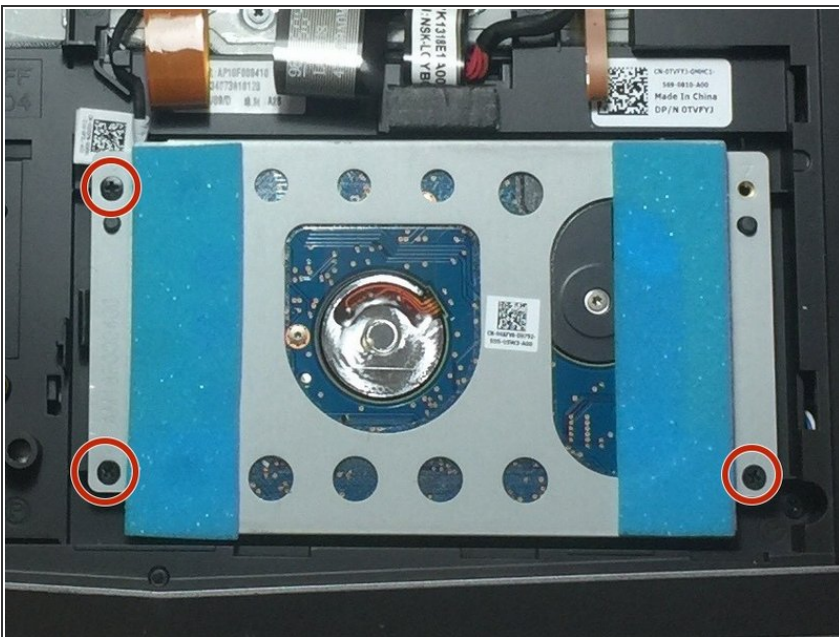


## Step 3



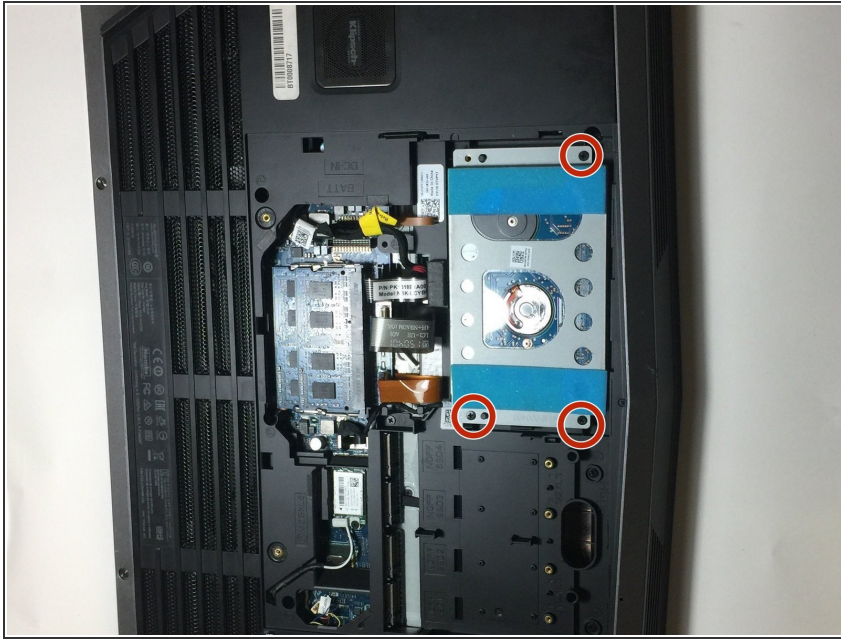
- Locate the Hard Drive

## Step 4



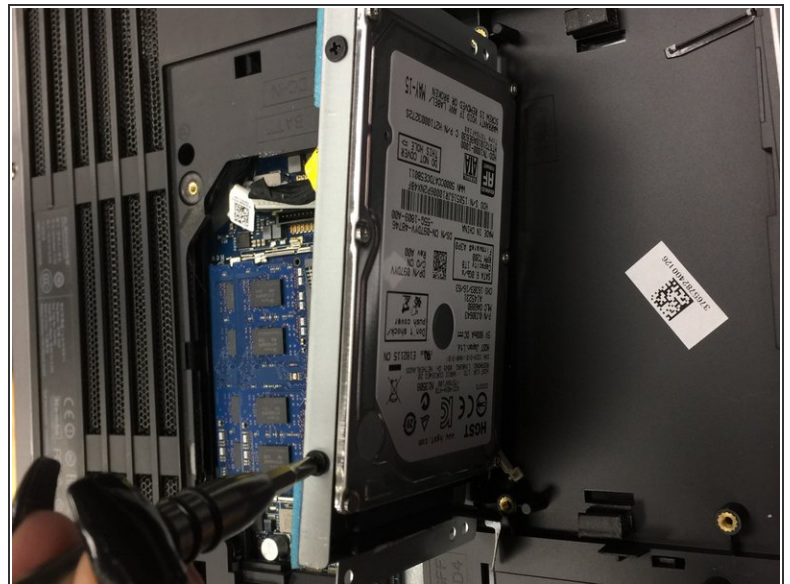
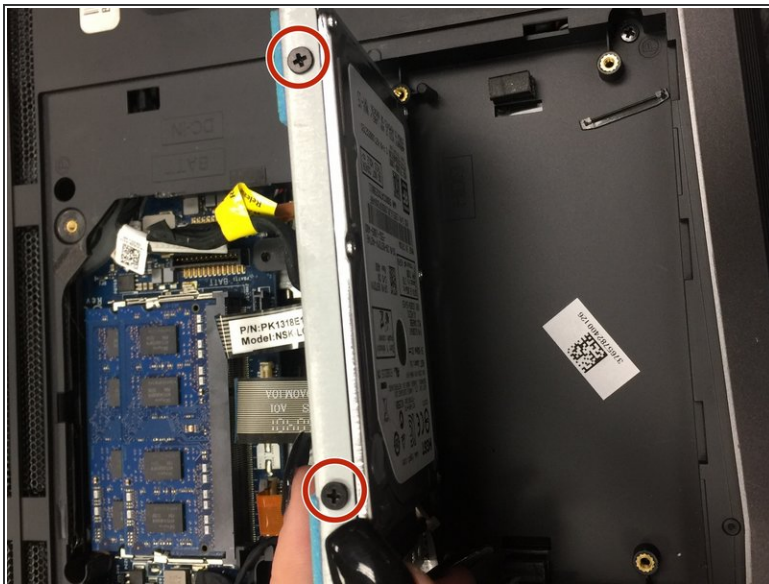
- Remove the screws that connect the SSD Bay to the laptop

## Step 5



- Unscrew the three screws holding the hard drive

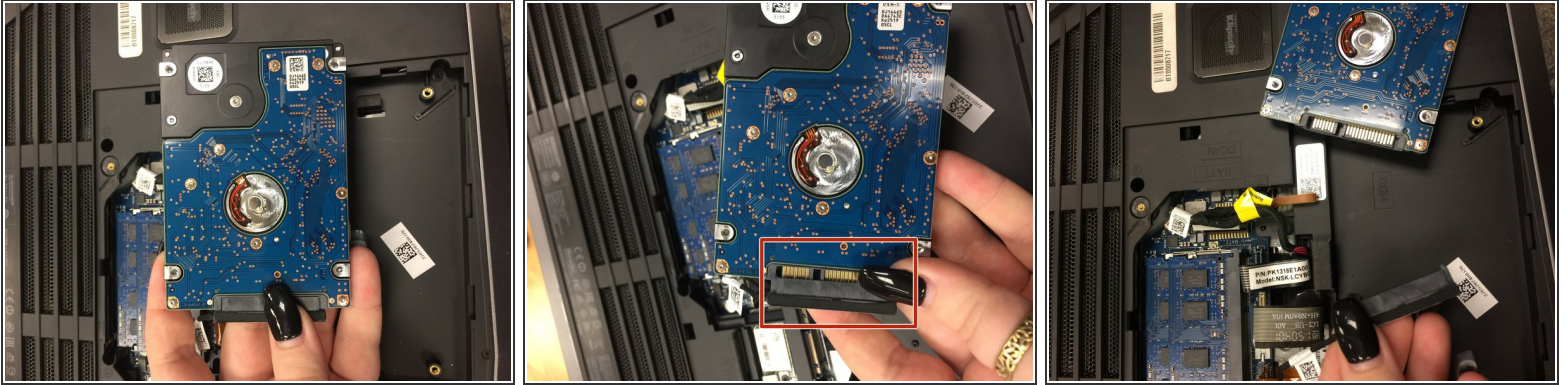
## Step 6



- Unscrew the four screws on the long sides of the hard drive casing



## Step 7



- Now that the hard drive casing is off, carefully unplug the hard drive from the laptop
- Your hard drive has now been successfully removed from your device

To reassemble your device, follow these instructions in reverse order.