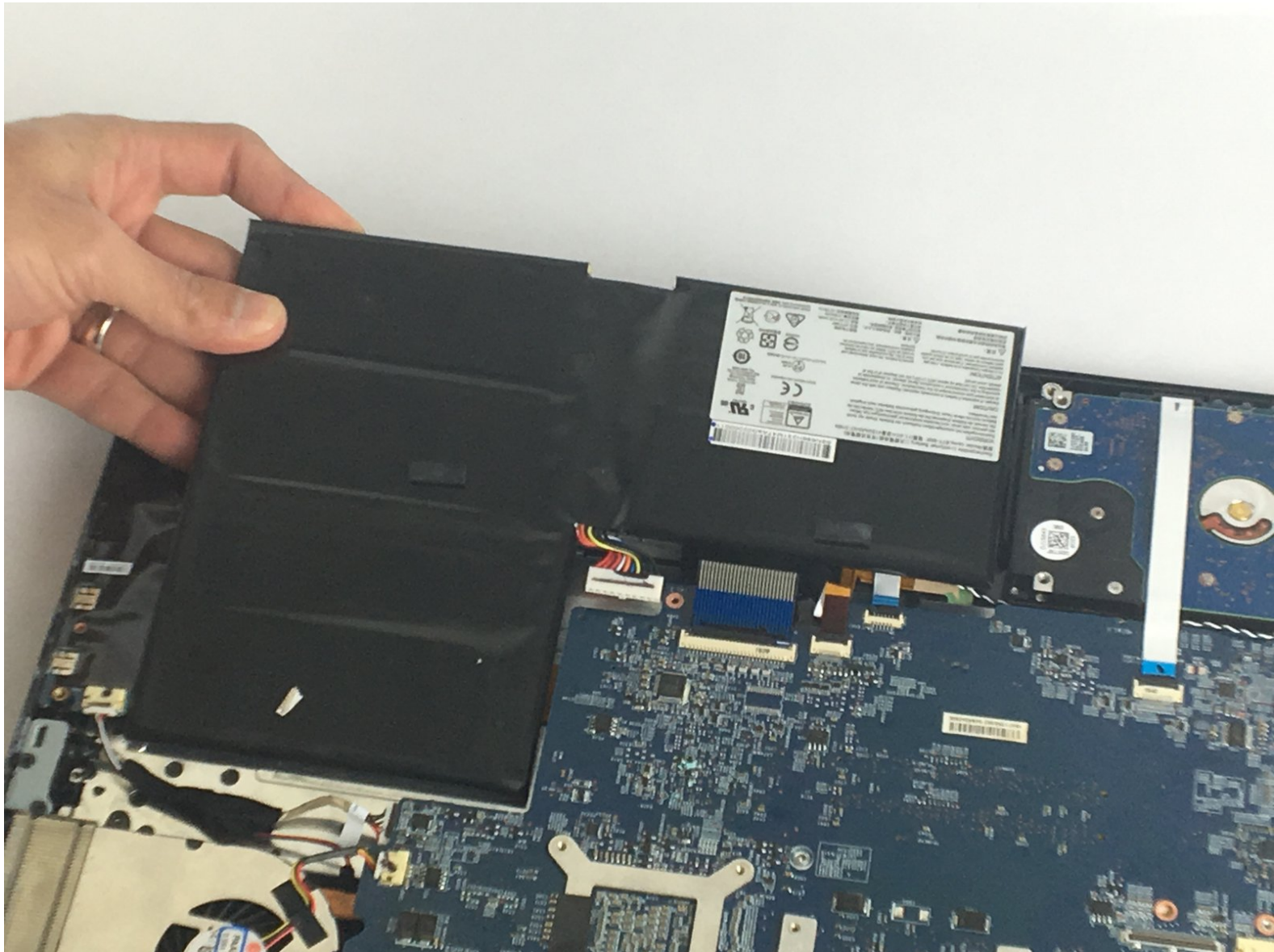




MSI GS60 6QE GHOST PRO 4K Battery Replacement

This repair guide shows the process of replacing the battery.

Written By: Azher Hamid



INTRODUCTION

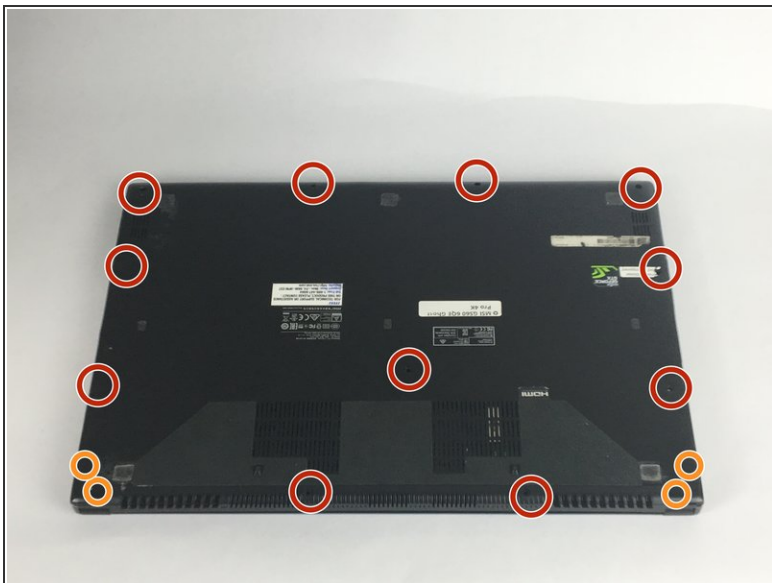
The process to replace the battery involves a few steps. The first step is unscrewing the 15 screws that hold the bottom plate together to gain access to the battery. The second step is unplugging the battery carefully to be replaced.



TOOLS:

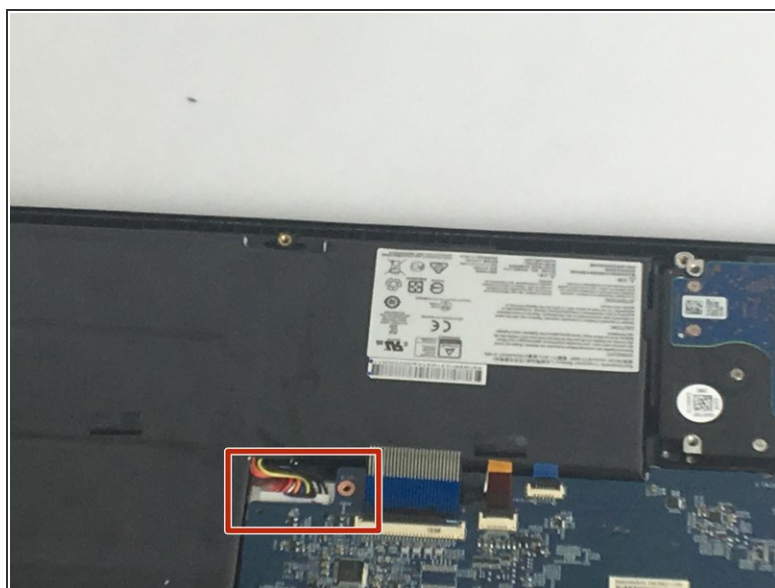
- [Phillips #0 Screwdriver](#) (1)
-

Step 1 — Battery



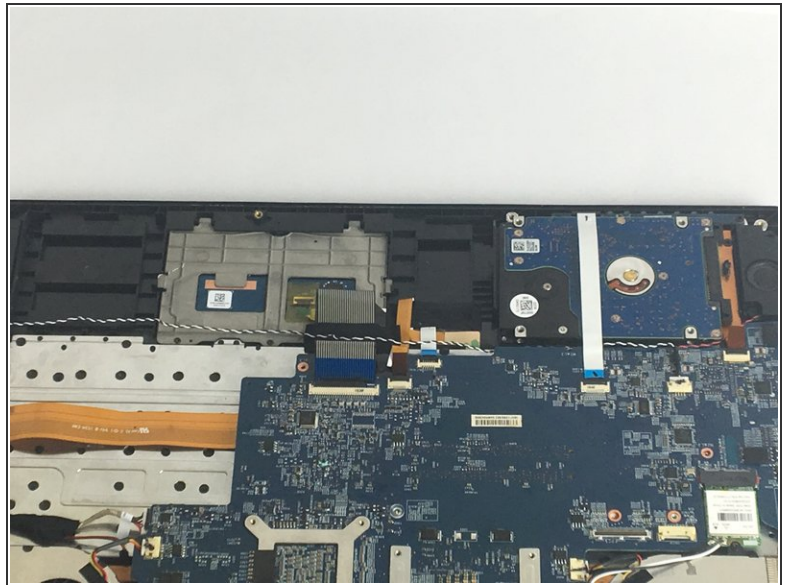
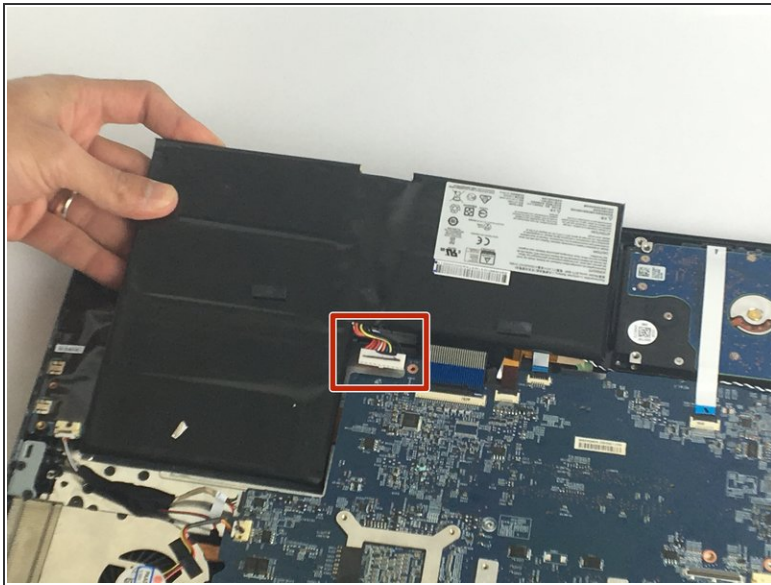
- Remove the eleven 5mm screws with a Phillips #0 bit.
- Remove the four 2.5mm screws with a Phillips #0 bit.

Step 2



- After opening the bottom plate, locate the battery and the battery connection.

Step 3



- Unplug the battery connection carefully from the motherboard, and remove the old battery.

To reassemble your device, follow these instructions in reverse order.