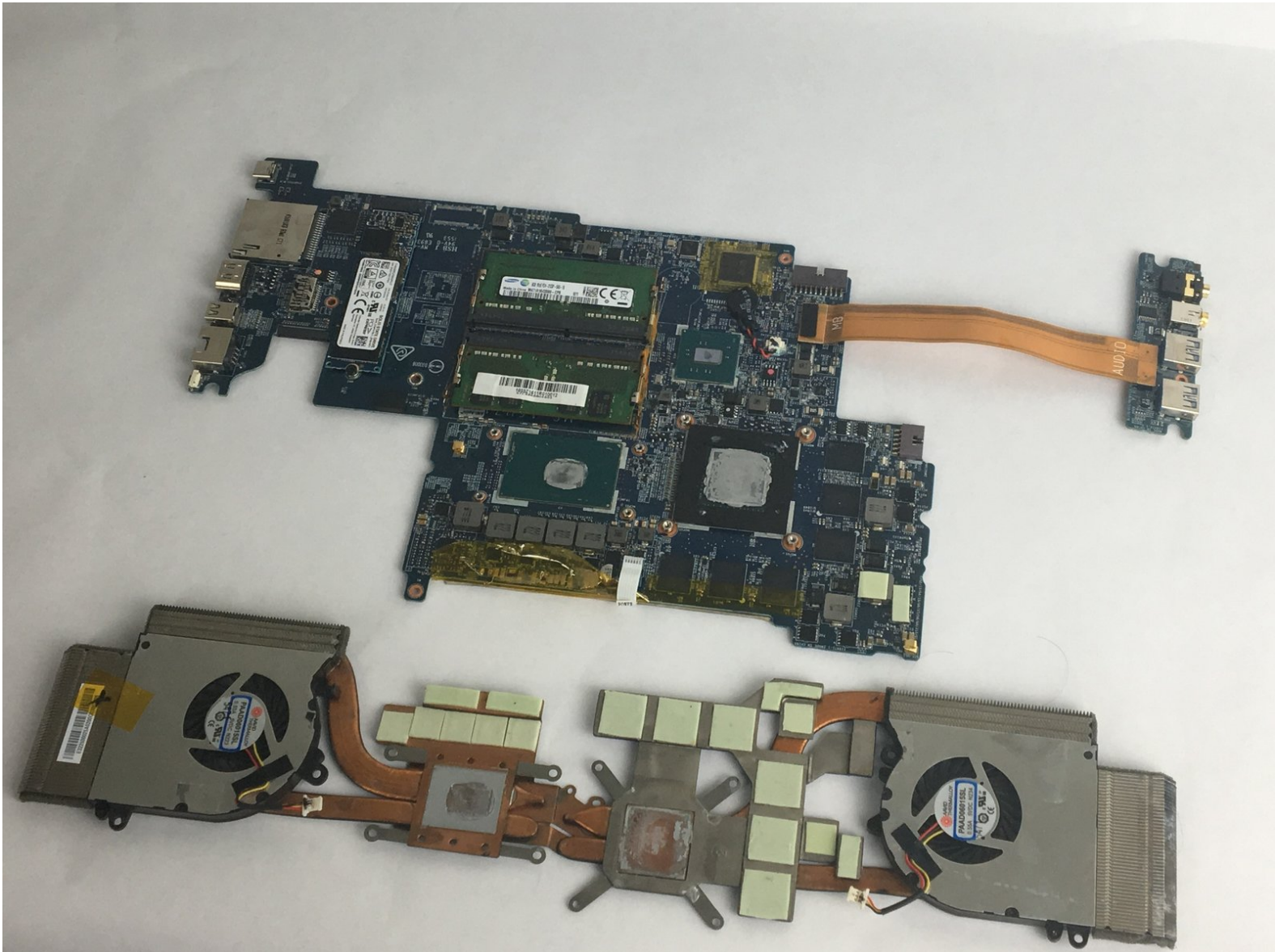




MSI GS60 6QE GHOST PRO 4K Motherboard fans Replacement

This guide is to do inspection or replace the fans if they are not functioning properly.

Written By: Mafdy Wahib



INTRODUCTION

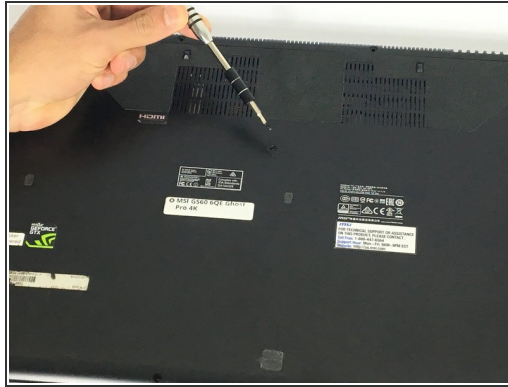
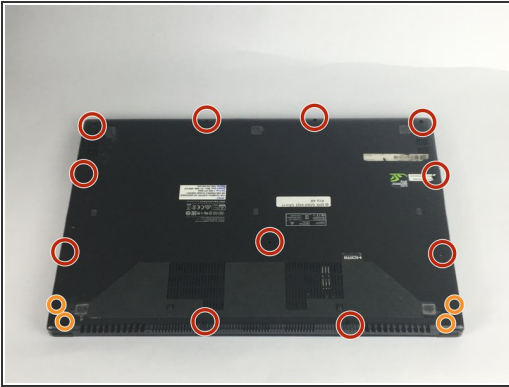
This is a hard process and takes time. to get to the motherboard fan, the motherboard need to be completely disconnected from the computer. After, the motherboard is disconnected and taken out of the computer, then you will be able to disconnect the fan and replace it. all the steps need to be done with carefulness to avoid any wiring damage.



TOOLS:

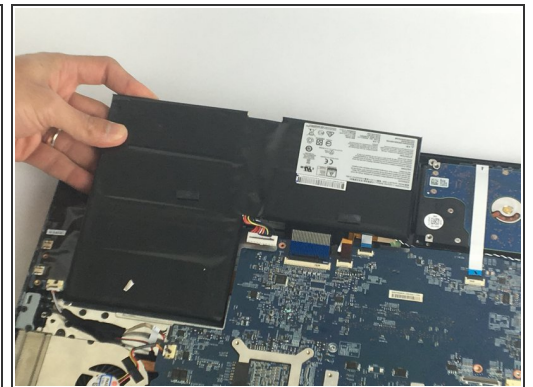
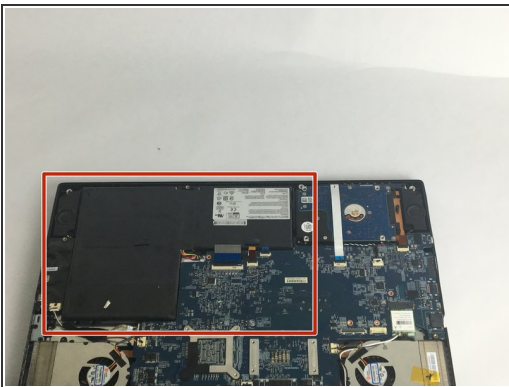
- [Phillips #0 Screwdriver](#) (1)
-

Step 1 — Motherboard fans



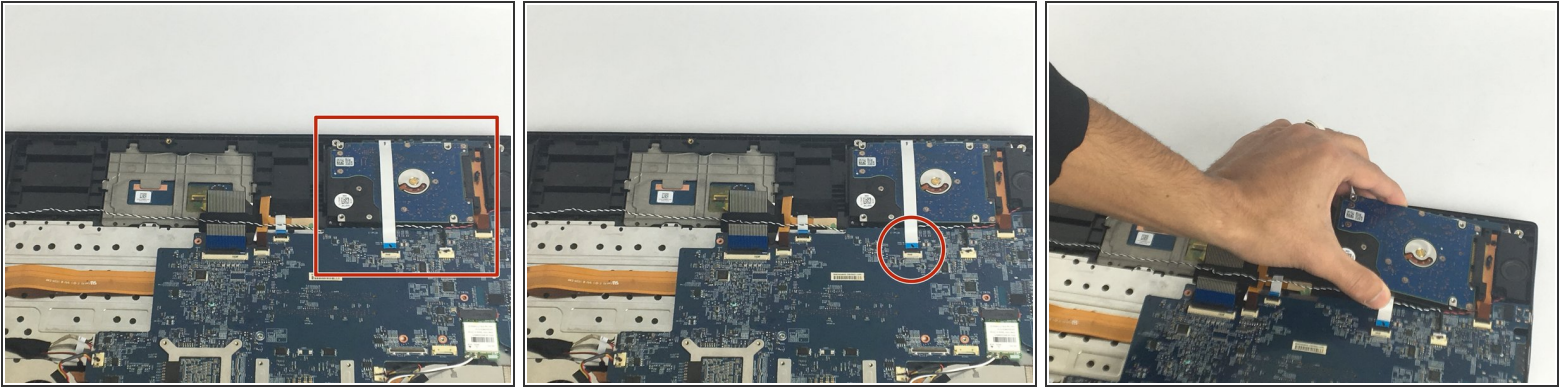
- Use a Phillips #0 driver to remove the 15 screws that hold the bottom cover:
 - Eleven 2.5 mm length screws
 - Four 5 mm length screws
- Remove the bottom cover.

Step 2



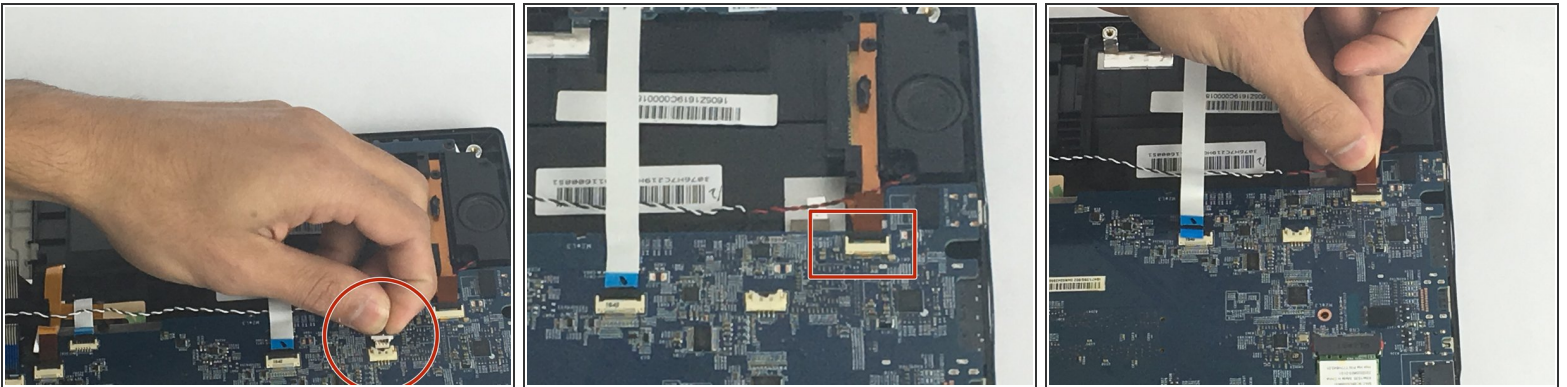
- Locate the battery.
- Locate the battery plug and unplug it carefully

Step 3



- Locate the Hard drive
- Unplug it gently by lifting it up to unlock the black cover that connects it to the motherboard
- ⚠ Be careful not to break the black cover because it can be broken easily
- Unplug the hard drive

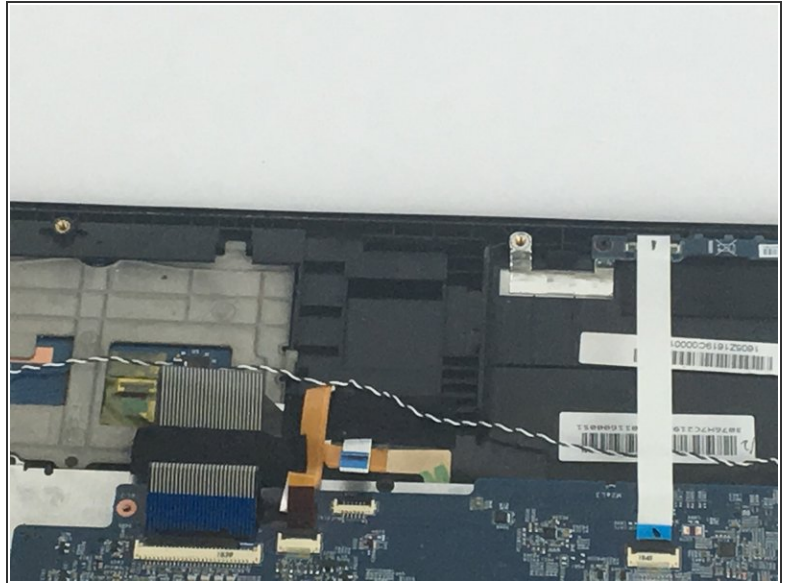
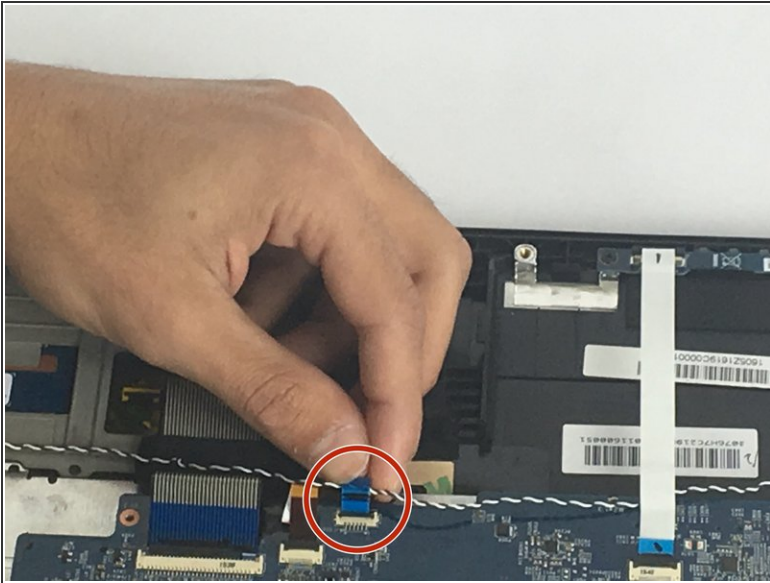
Step 4



- unplug this wire carefully
- Unplug the brown wire located next to the previous wire. Unplug it gently by lifting it up to unlock the black cover that connects it to the motherboard

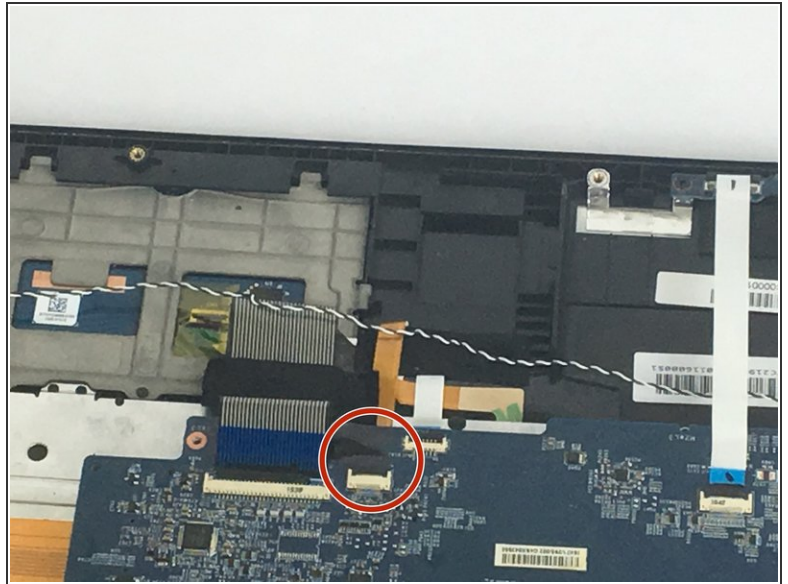
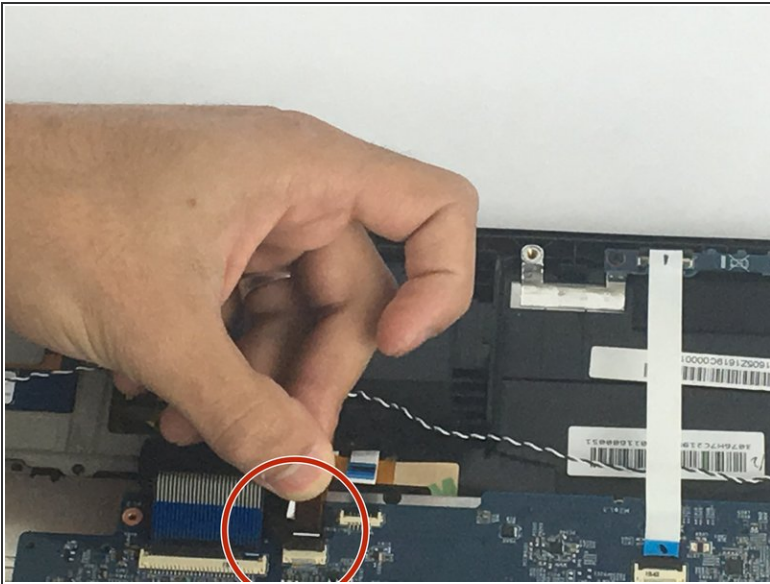
⚠ Be careful not to break the black cover because it can be broken easily

Step 5



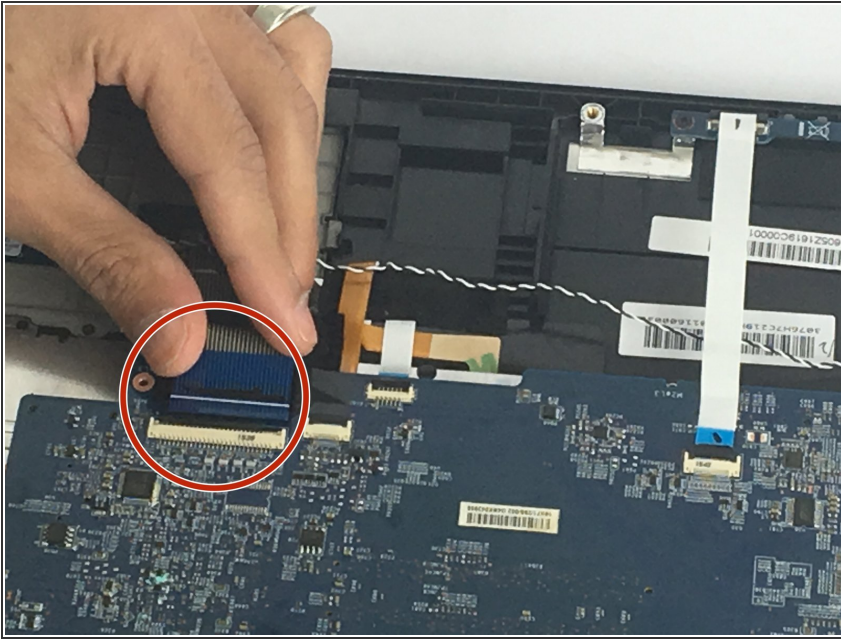
- unplug the selected wire. Unplug it gently by lifting it up to unlock the black cover that connects it to the motherboard

Step 6



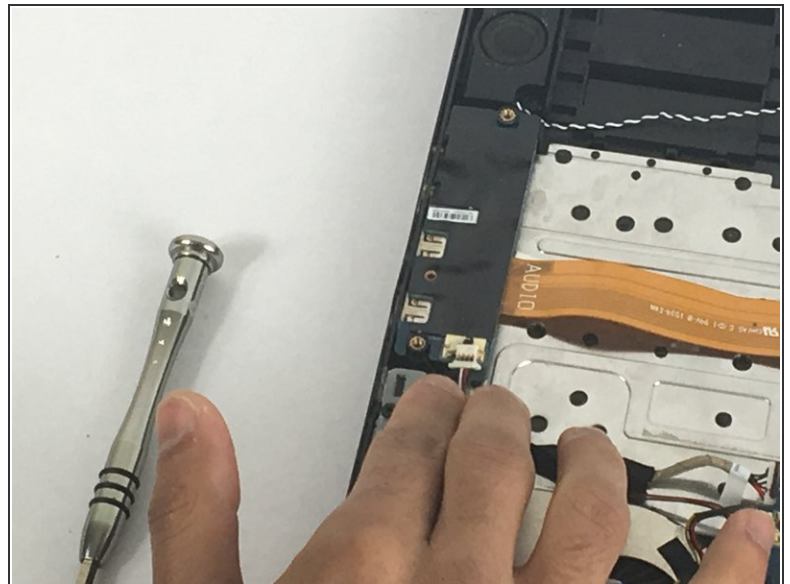
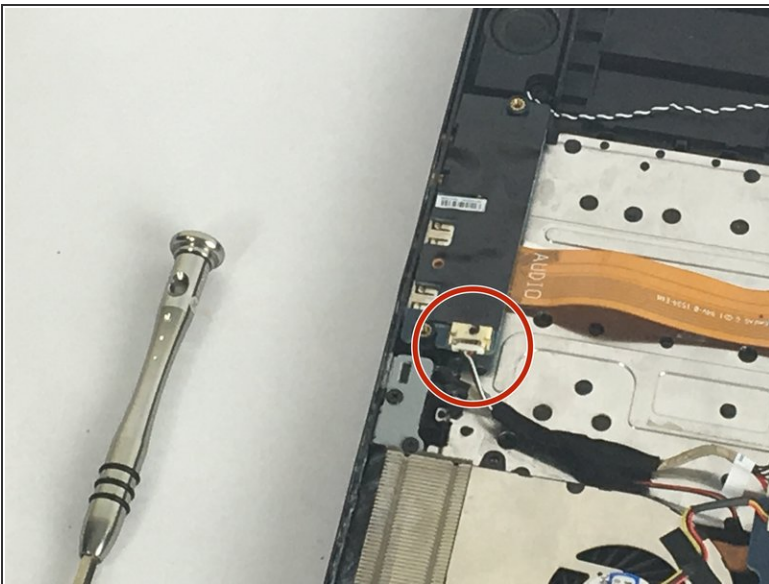
- unplug the brown selected wire. Unplug it gently by lifting it up to unlock the black cover that connects it to the motherboard

Step 7



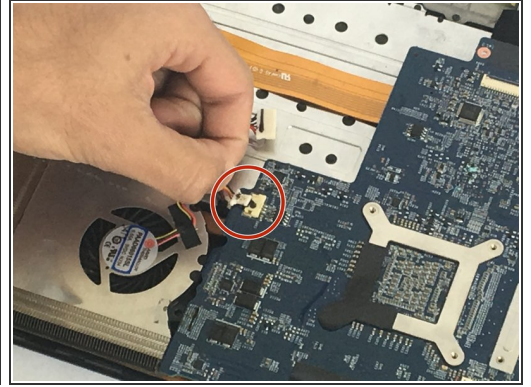
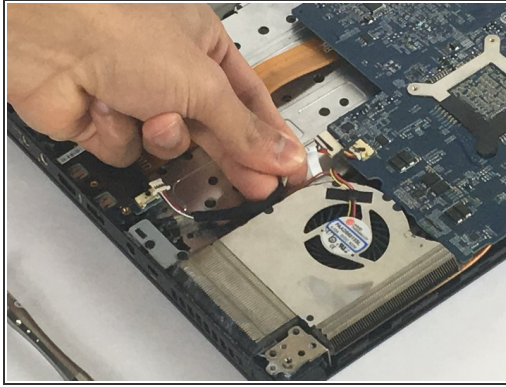
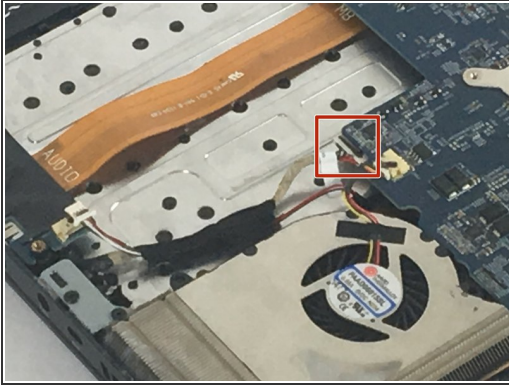
- unplug the selected wire. Unplug it gently by lifting it up to unlock the black cover that connects it to the motherboard

Step 8



- Locate the selected wire and unplug it carefully

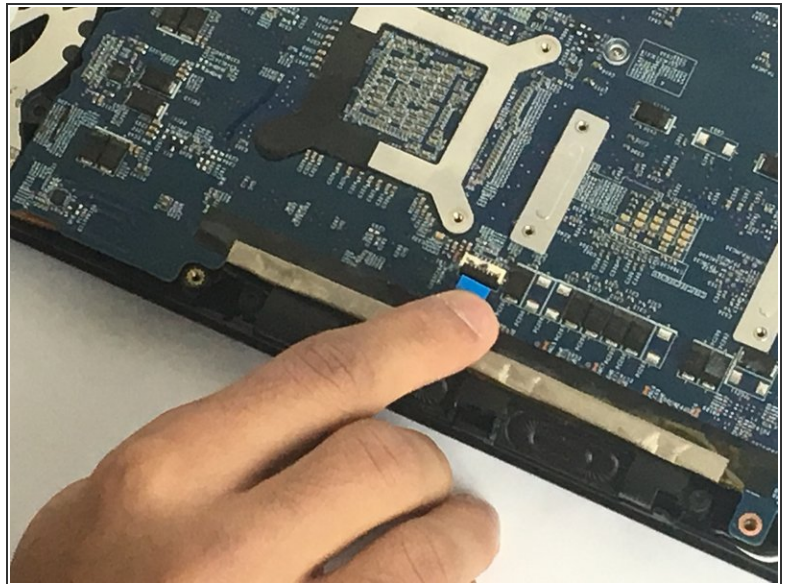
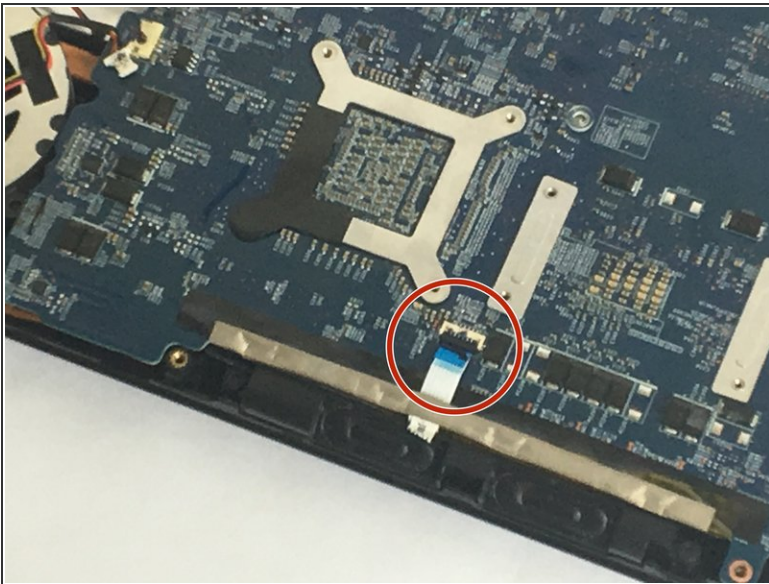
Step 9



- unplug the selected wires

⚠ Unplug it gently without causing damage to the wire

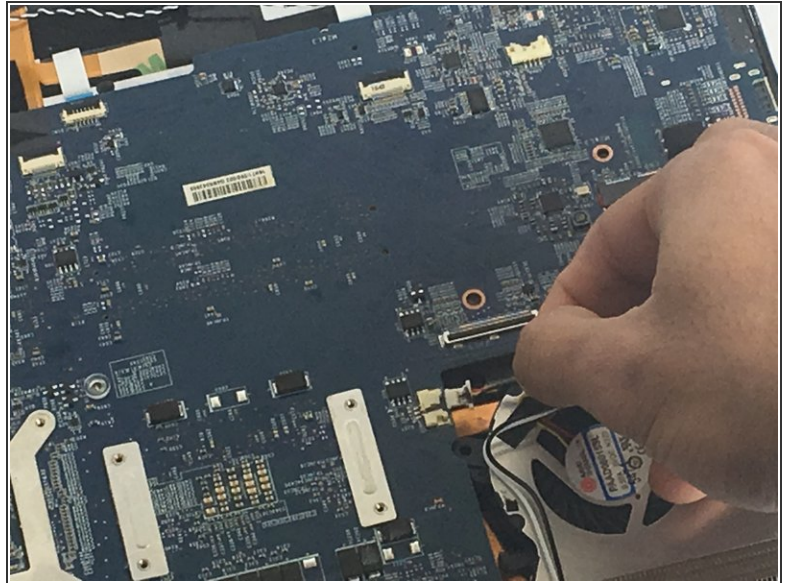
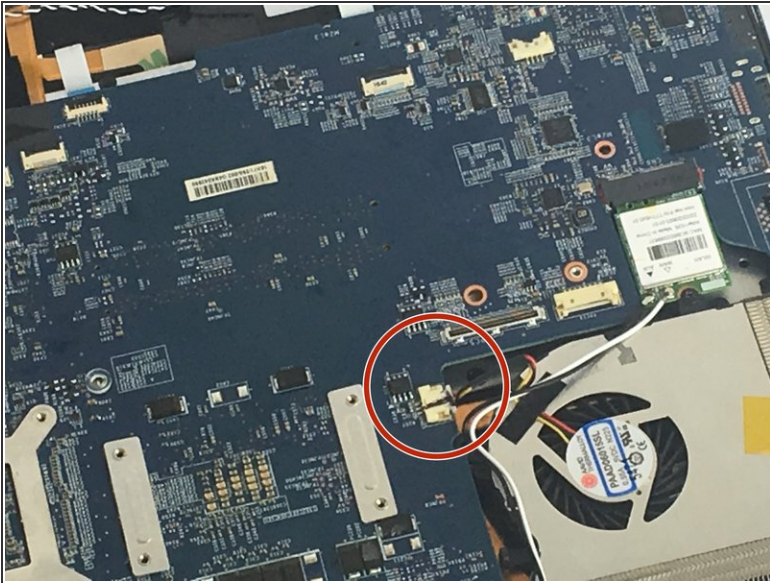
Step 10



- unplug the selected white wire. Unplug it gently by lifting it up to unlock the black cover that connects it to the motherboard

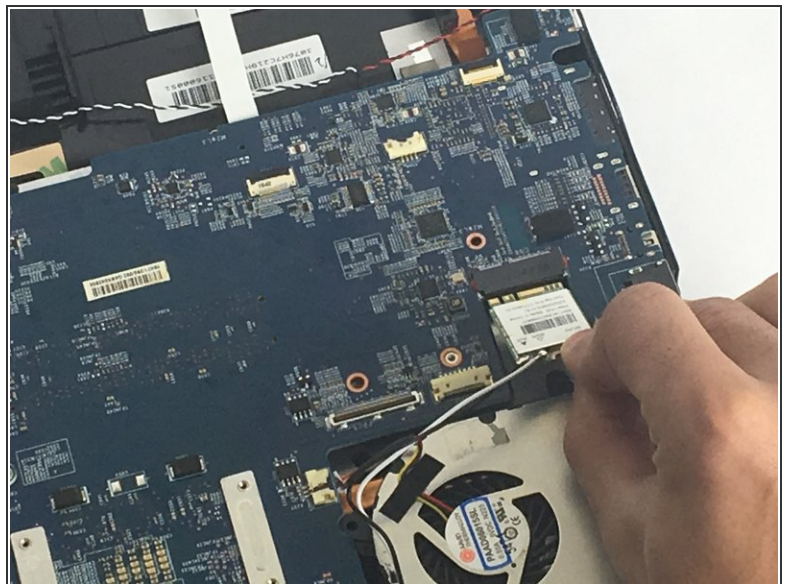
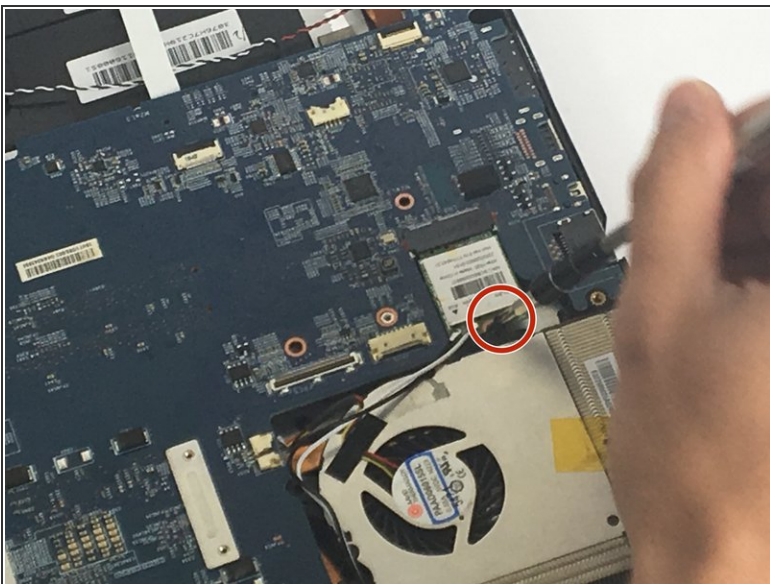
⚠ Be careful not to break the black cover because it can be broken easily

Step 11



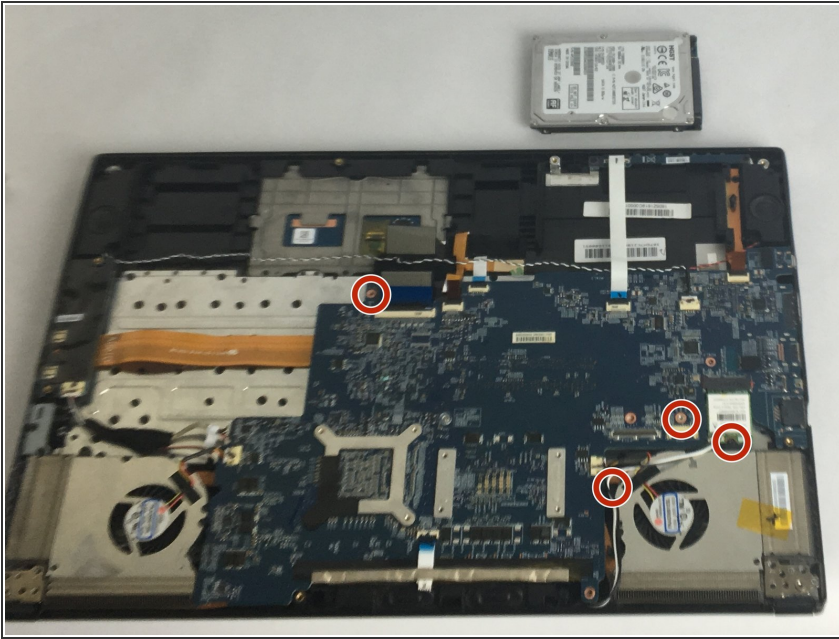
- unplug the selected wire.

Step 12



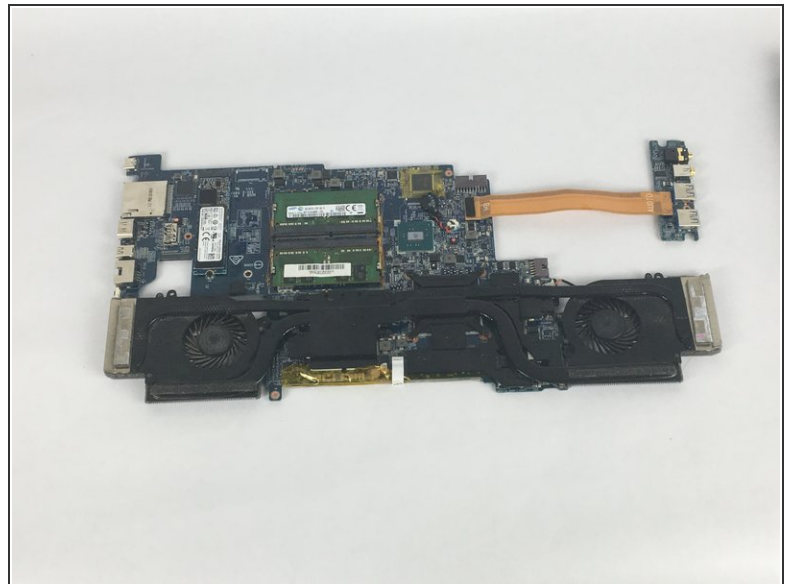
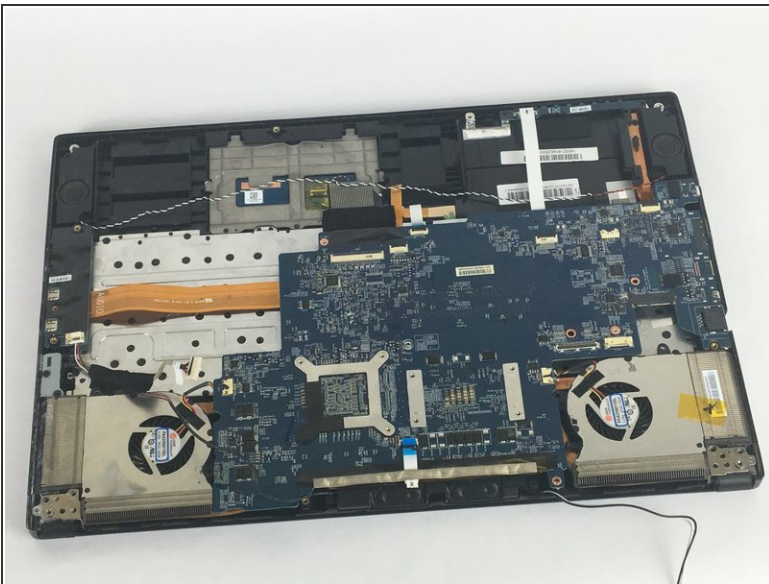
- remove the selected 2.5 mm screws by PH0 Bit screwdriver
- Gently unplug the electronic chip

Step 13



- Remove the four 2.5mm screws with a PH0 bit.

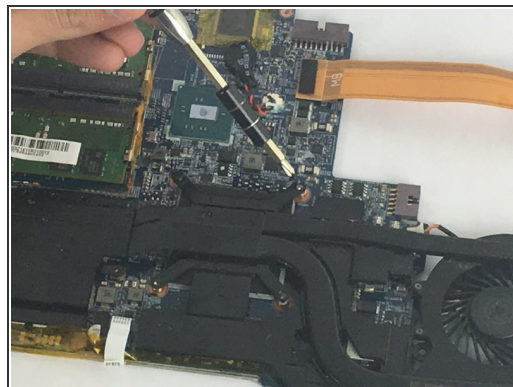
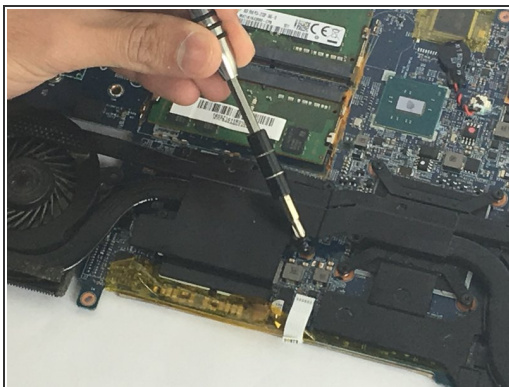
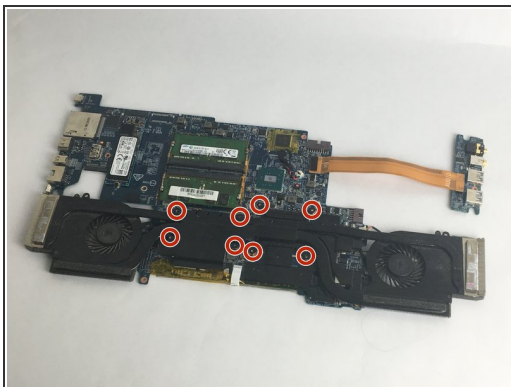
Step 14



- After you remove all the connected wires and unscrew all the screws that holds the motherboard to the laptop, take the motherboard out as shown in the picture.

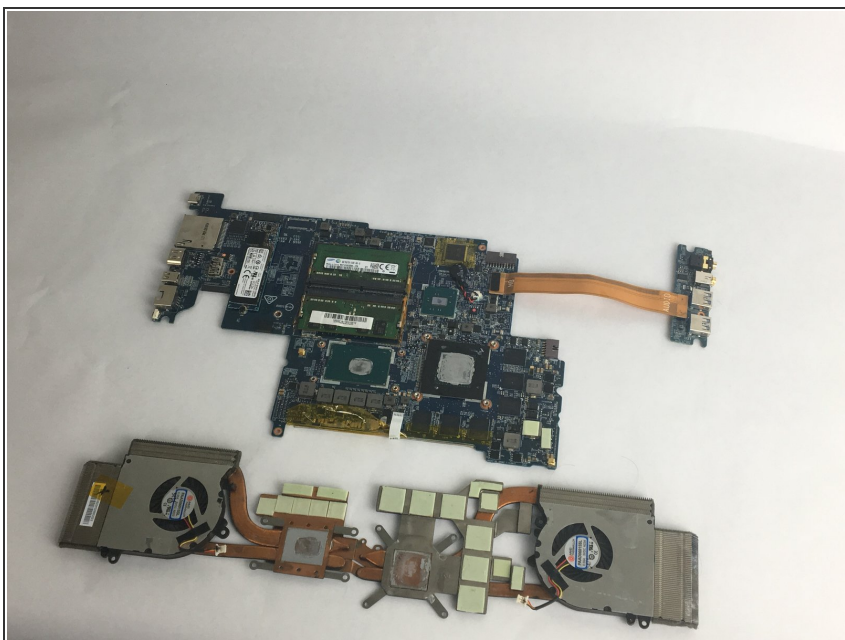
⚠ Make sure it is completely disconnected from all wires and screws

Step 15



- Remove the eight 2.5mm screws with a PH0 bit.

Step 16



- After you unscrew all the screws, take the fan off to replace it.

To reassemble your device, follow these instructions in reverse order.