



Motorola Moto G4 Battery Replacement

Use this guide to replace the Moto G4's...

Written By: Jeff Suovanen



INTRODUCTION

Use this guide to replace the Moto G4's rechargeable battery. If your battery is swollen, [take appropriate precautions](#).

Before you begin, download the [Rescue and Smart Assistant](#) app to backup your device and diagnose whether your problem is software or hardware related.

For your safety, discharge your existing battery below 25% before disassembling your phone. This reduces the risk of a dangerous thermal event if the battery is accidentally damaged during the repair.



TOOLS:

[Spudger](#) (1)
[T3 Torx Screwdriver](#) (1)
[Tweezers](#) (1)



PARTS:

[Moto G4/G4 Plus Battery - Genuine](#) (1)

Step 1 — Back Cover



- Insert a fingernail or a spudger into the notch on the bottom edge of the phone, near the charge port.
- Gently twist or pry to open a small gap between the back cover and the body of the phone.
- While keeping your tool (or fingernail) inserted into the gap between the back cover and the body of the phone, slide it around the corner to begin loosening the plastic clips holding the cover in place.

Step 2



- Slide your tool all along the side of the phone to separate more of the clips securing the back cover.

Step 3




- Keep your tool inserted slightly under the back cover, and slide it around the top corner.
- If necessary, continue prying around the remaining edges of the phone until the back cover comes free.

Step 4



- Remove the back cover.

 To install the back cover, carefully position it over the phone and then press gently all around the edges until you feel the clips snap into place.

Step 5 — Midframe



- Push to eject and remove the MicroSD and SIM cards (if installed).

Step 6



- Use a spudger to pry up the rubber cover for the camera flash connector.

Step 7



- Remove the rubber cover.

Step 8



- Use a spudger to disconnect the camera flash connector by prying it straight up.

Step 9



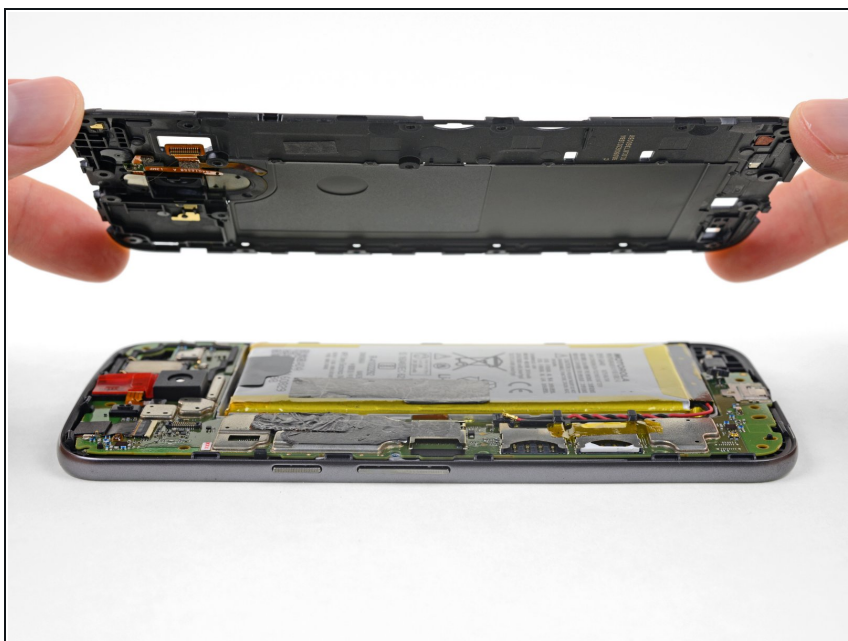
- Use a T3 Torx driver to remove the nineteen identical 3.1 mm screws securing the midframe.

Step 10



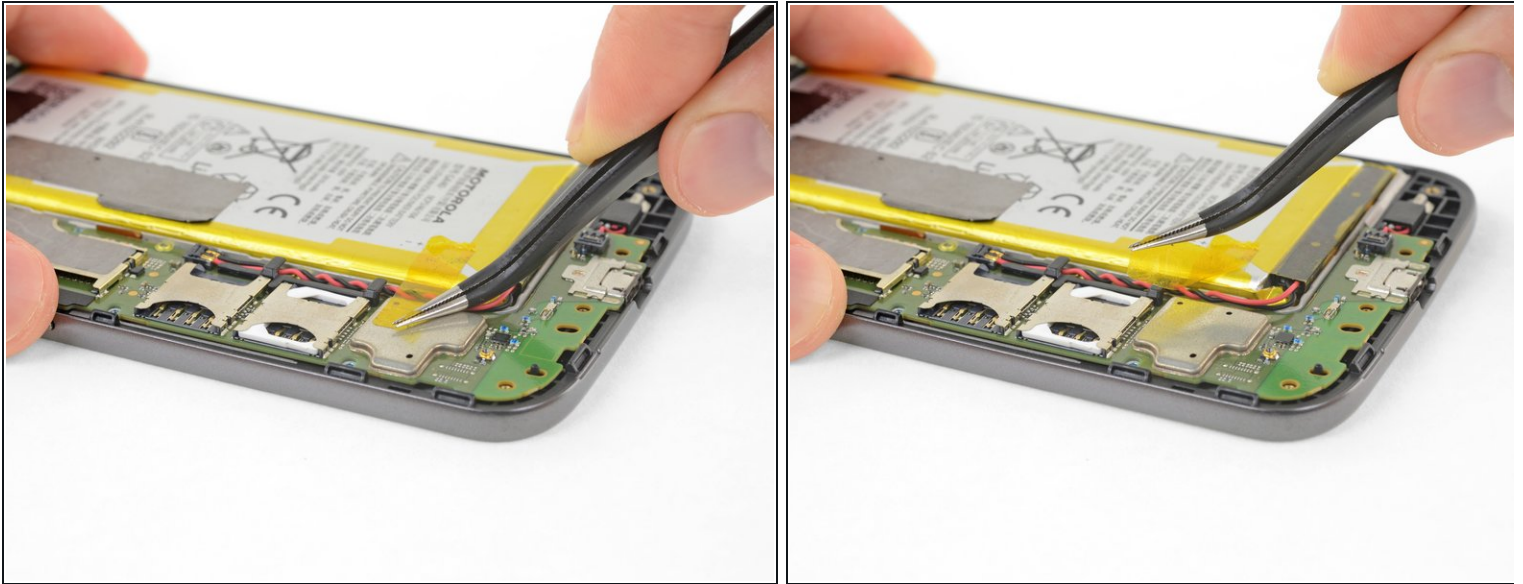
- Insert a spudger under the midframe at the top left corner, and gently twist to separate it from the body of the phone.

Step 11



- Remove the midframe.

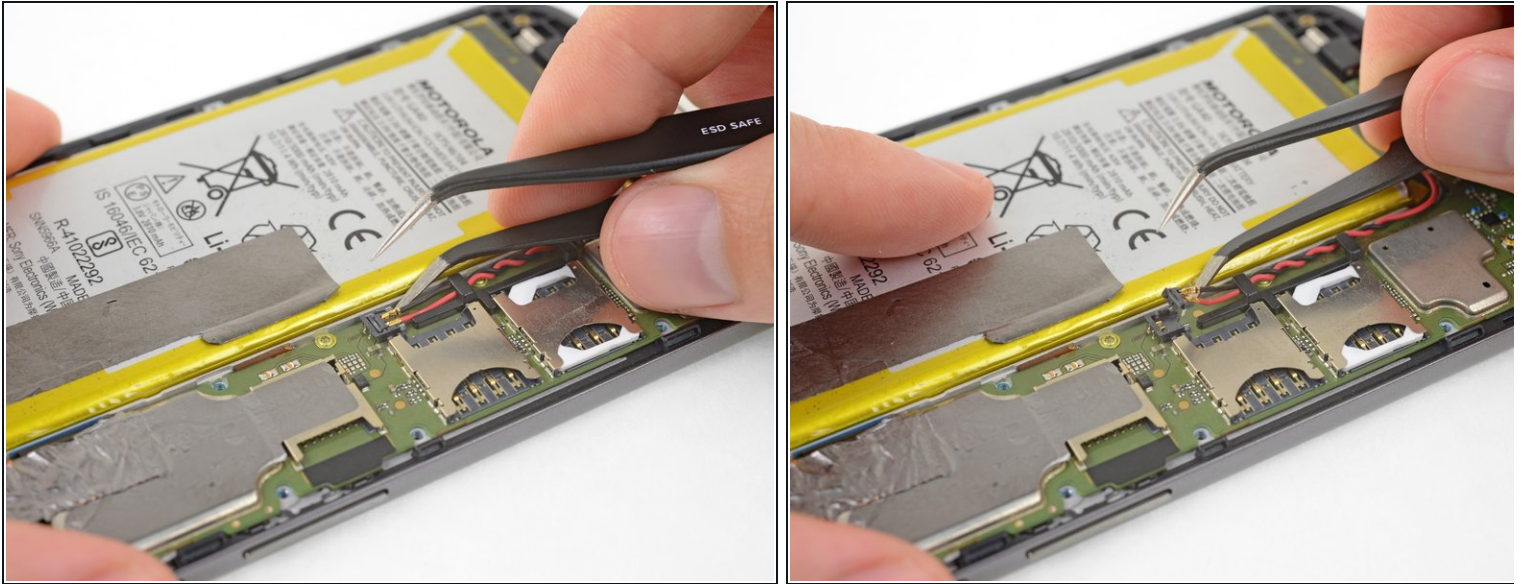
Step 12 — Battery



- Peel up and remove any tape connecting the battery to the main board.

⚠ Be very careful not to puncture the battery with any sharp tools. A damaged lithium-ion battery can catch fire and/or explode.

Step 13

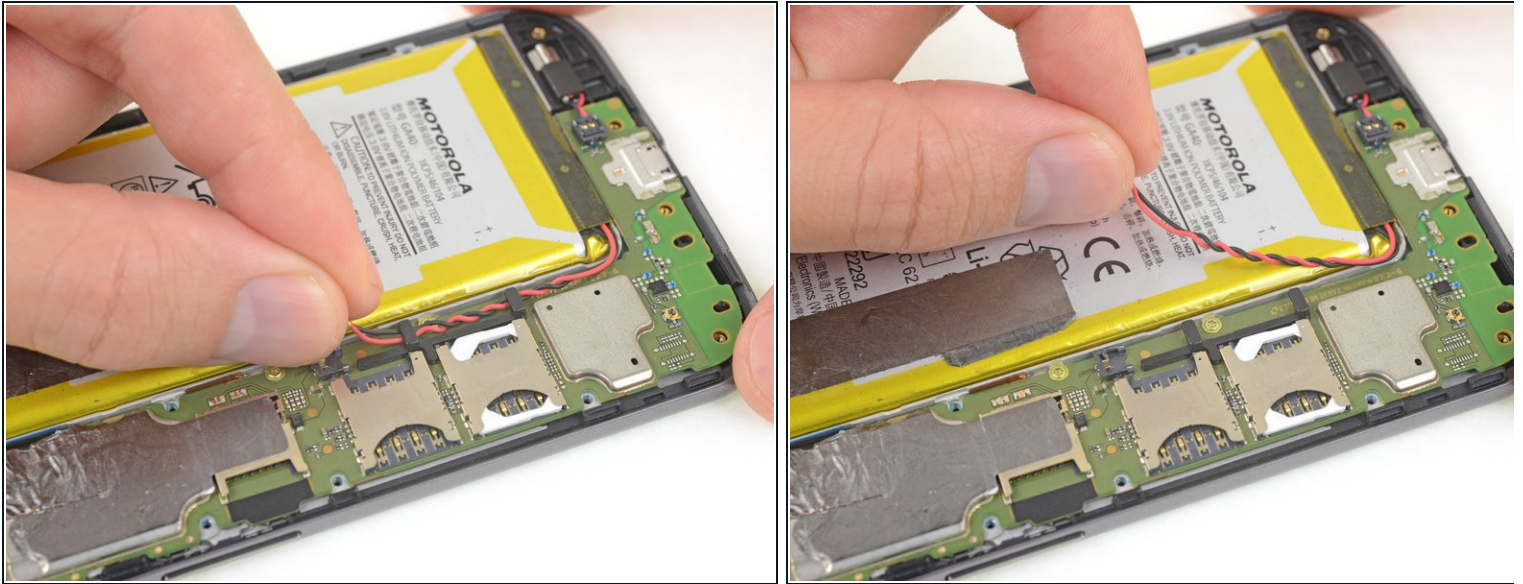


- Insert a thin tool (such as one of your tweezer tips) under the red and black battery wires, and slide it underneath the battery connector.
- Gently pry straight up to disconnect the battery.

⚠️ Pry only from the side where the wires attach to the connector—if you pry anywhere else, you may break the socket.

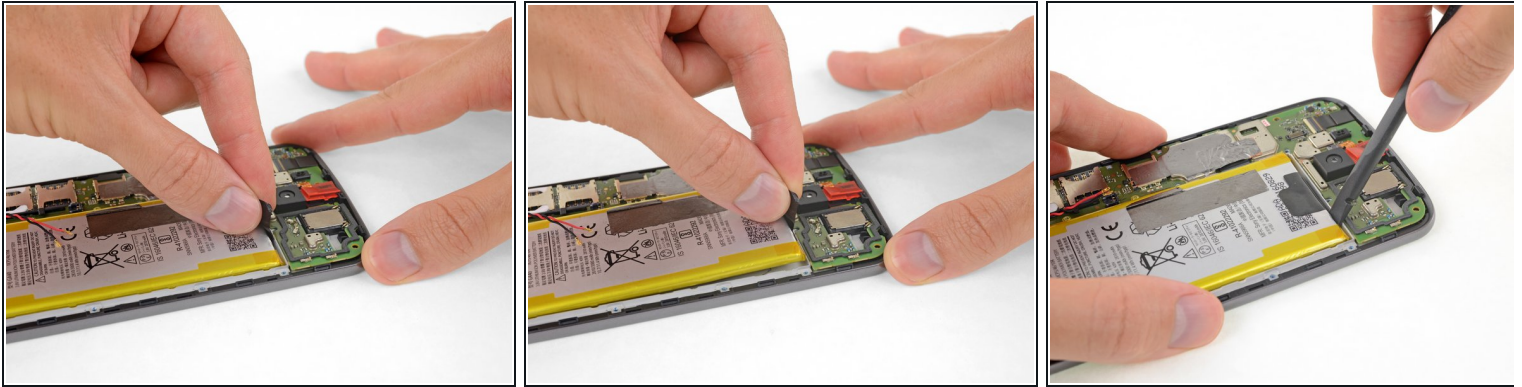
- ☑️ During reassembly, align the connector in its socket with the exposed copper wire facing up, and then press straight down to reconnect it, wiggling slightly as you press to help it seat correctly.

Step 14



- Push the battery wires towards the battery to de-route them from the black bracket on the motherboard.

Step 15

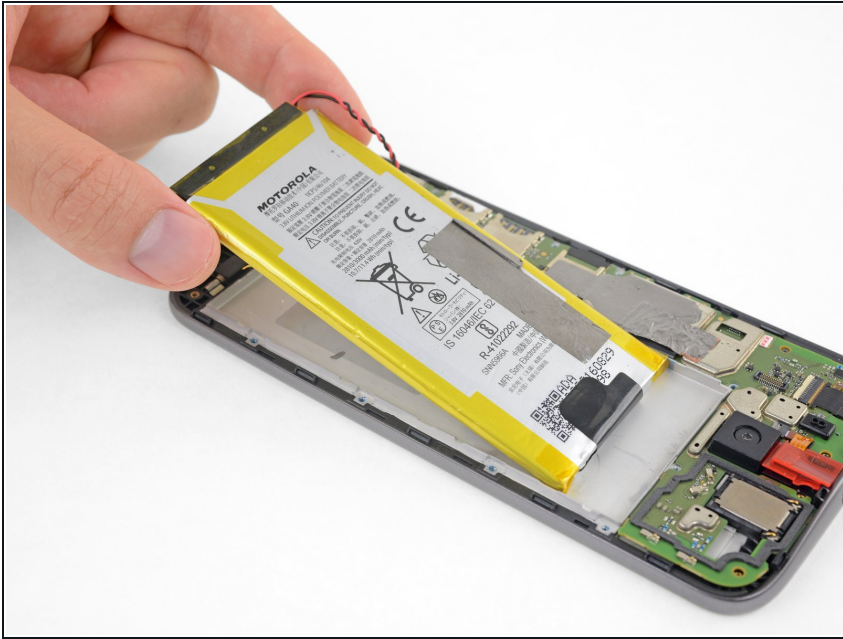


- Peel up the black pull tab at the top of the battery, and pull slowly but firmly to separate the battery from the adhesive holding it in place.
- ① The battery separates more easily if you add a few drops of isopropyl alcohol along each side, to soften the adhesive beneath. High concentration (90% or greater) alcohol will not harm your phone's components.
- ① Heating the area behind the battery can also help soften the adhesive, but be very careful not to overheat the battery.
- If the pull tab breaks, use a spudger or an old credit card to pry up carefully on the edges of the battery until it comes loose.

⚠ Don't deform or puncture the battery—it can catch fire and/or explode if damaged.

⚠ Never reinstall a damaged or deformed battery. Replace the battery.

Step 16



- Remove the battery.
- ✦ During installation, note the orientation of the battery—if the connector is on the same side as the motherboard, and the text is upside-down relative to the rest of the phone, you've done it correctly.
- ✦ Use a few strips of thin [double-sided adhesive tape](#) or a [pre-cut adhesive card](#) to secure the battery. (Or, if you are replacing the display, it may come with adhesive for the battery pre-installed.)

Carefully compare your new replacement part to the original part. Remove any adhesive backings before installing your new battery.

To reassemble your device, follow the above steps in reverse order.

After completing this guide, [calibrate your newly-installed battery](#).

Take your e-waste to an [R2 or e-Stewards certified recycler](#).

Repair didn't go as planned? Check out our [Answers community](#) for troubleshooting help.