



# DualShock 4 CHU-ZCT2U Buttons Replacement

Written By: Michelle Joseph





## TOOLS:

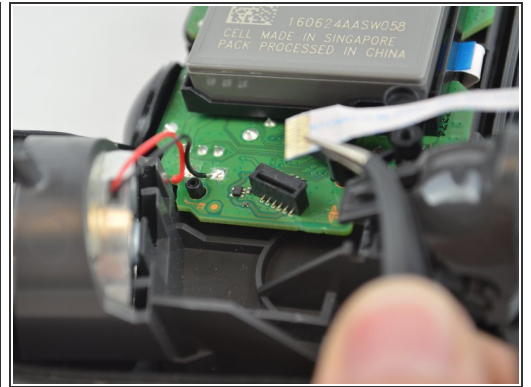
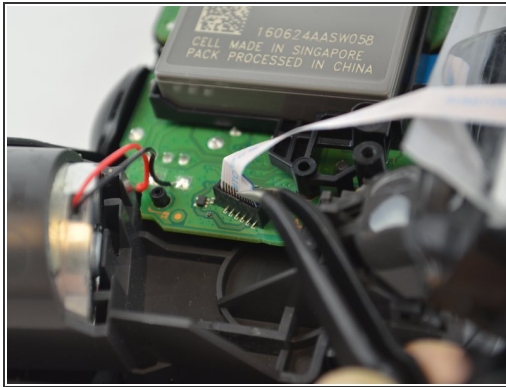
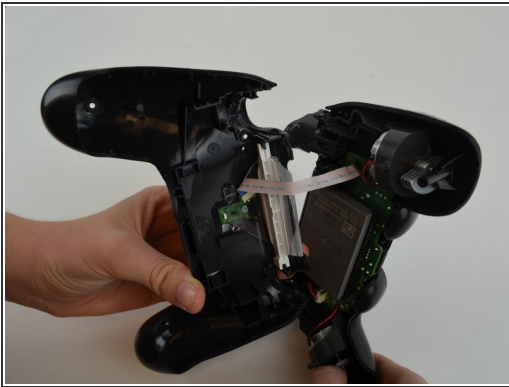
- [Phillips #00 Screwdriver](#) (1)
- [iFixit Opening Tool](#) (1)
- [Tweezers](#) (1)

## Step 1 — Outer Shell



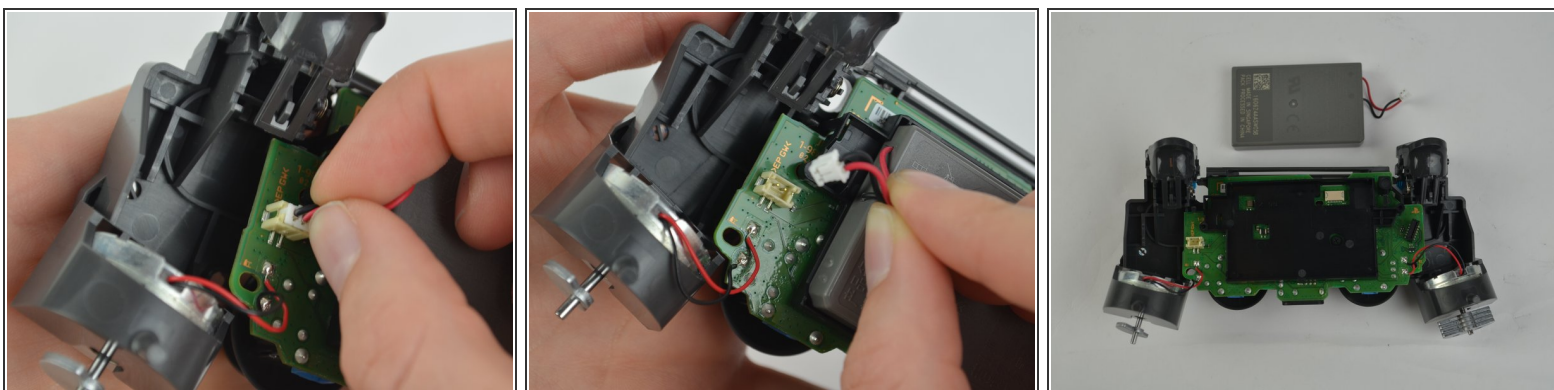
- Unscrew the four 6.5mm screws, using a Phillips-Head screwdriver.
- Pry the two halves of the shell apart using a plastic opening tool.
- ⓘ Be careful, as there will be a ribbon connecting the inner workings of the controller. It will not separate into two parts just by pulling apart the shell.

## Step 2



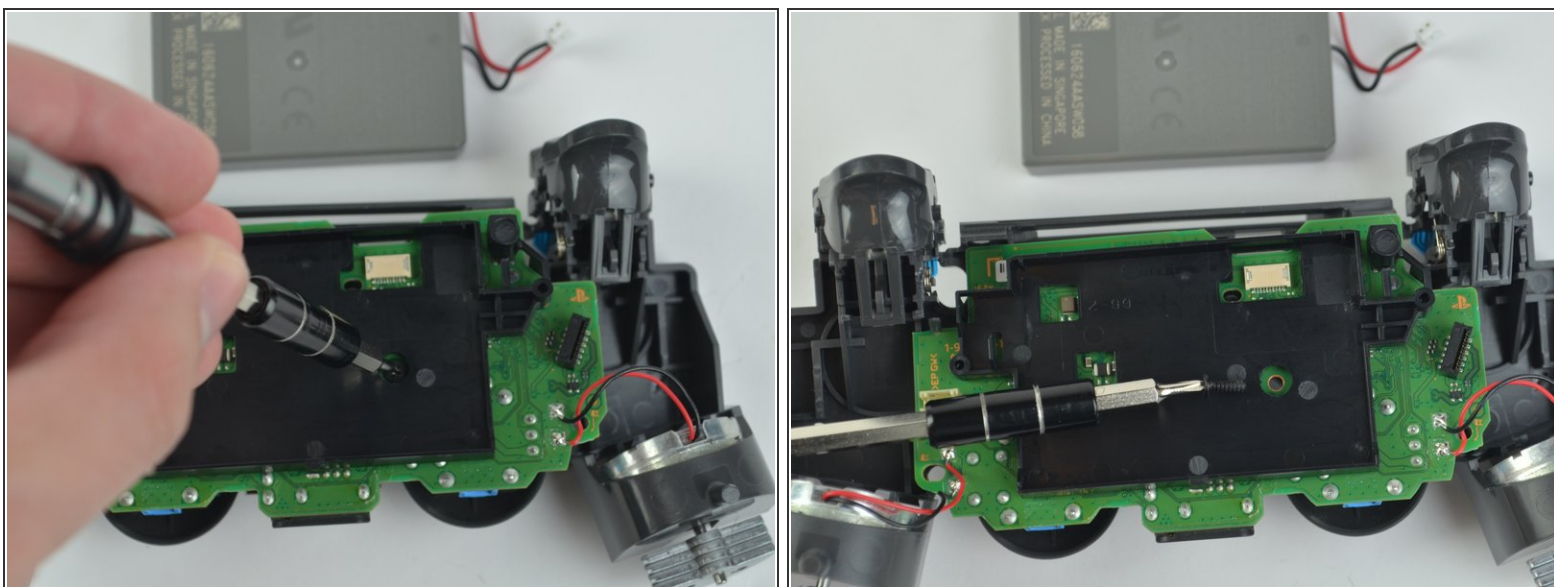
- Pull the ribbon cable out of the motherboard port to fully separate the two halves, using a pair of tweezers.

## Step 3 — Battery



- Unplug the black and red wires from the power port located on the motherboard.
- Remove the old battery from the controller.

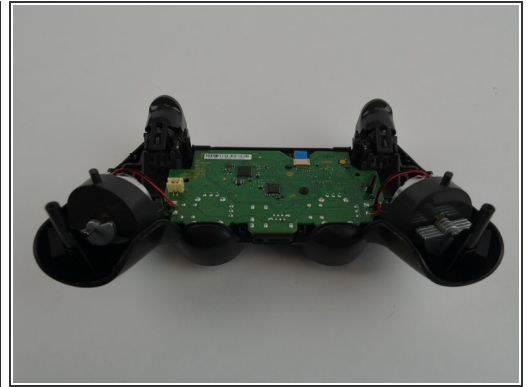
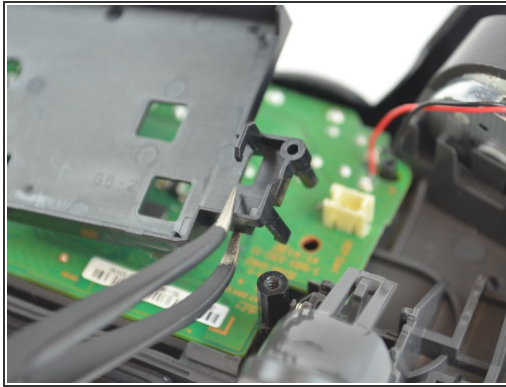
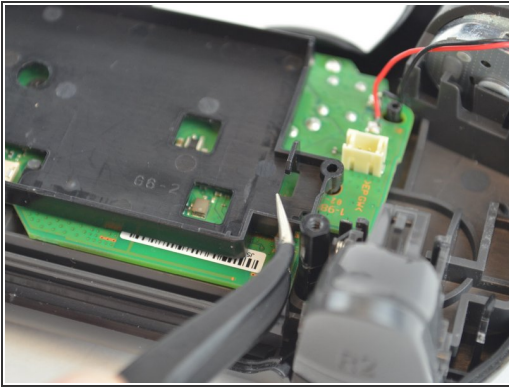
## Step 4



- Remove the 6.43mm screw connecting the motherboard to the inner workings of the controller, using a Phillips-Head screwdriver.

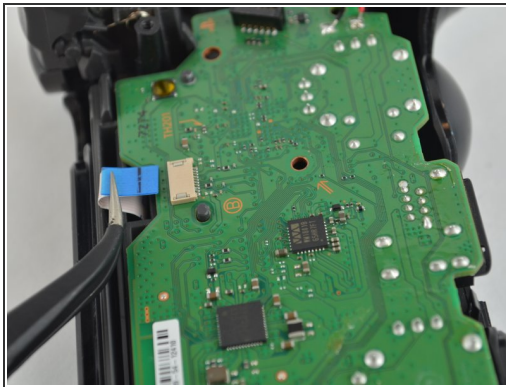
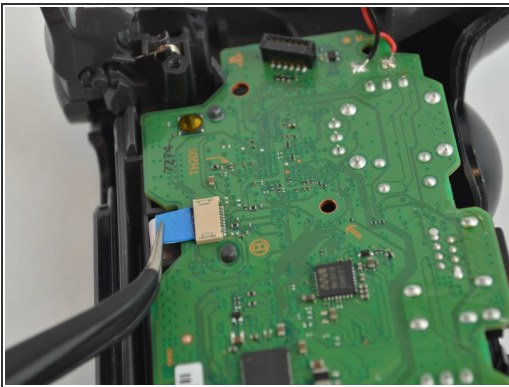


## Step 5



- Unhook the battery case from the motherboard, and pull it off.

## Step 6 — Buttons



- Pull out the second ribbon cable to separate the inner workings from the top of the outer shell.

## Step 7



- Remove the rubber pads that secure the buttons in place for the arrow buttons, shape buttons, and Playstation Home button.
- ⓘ Do not turn the front shell cover upside down after completing this step, because some of the buttons may fall out.

## Step 8



- Remove the old buttons, and replace them with new ones using a pair of tweezers.

To reassemble your device, follow these instructions in reverse order.