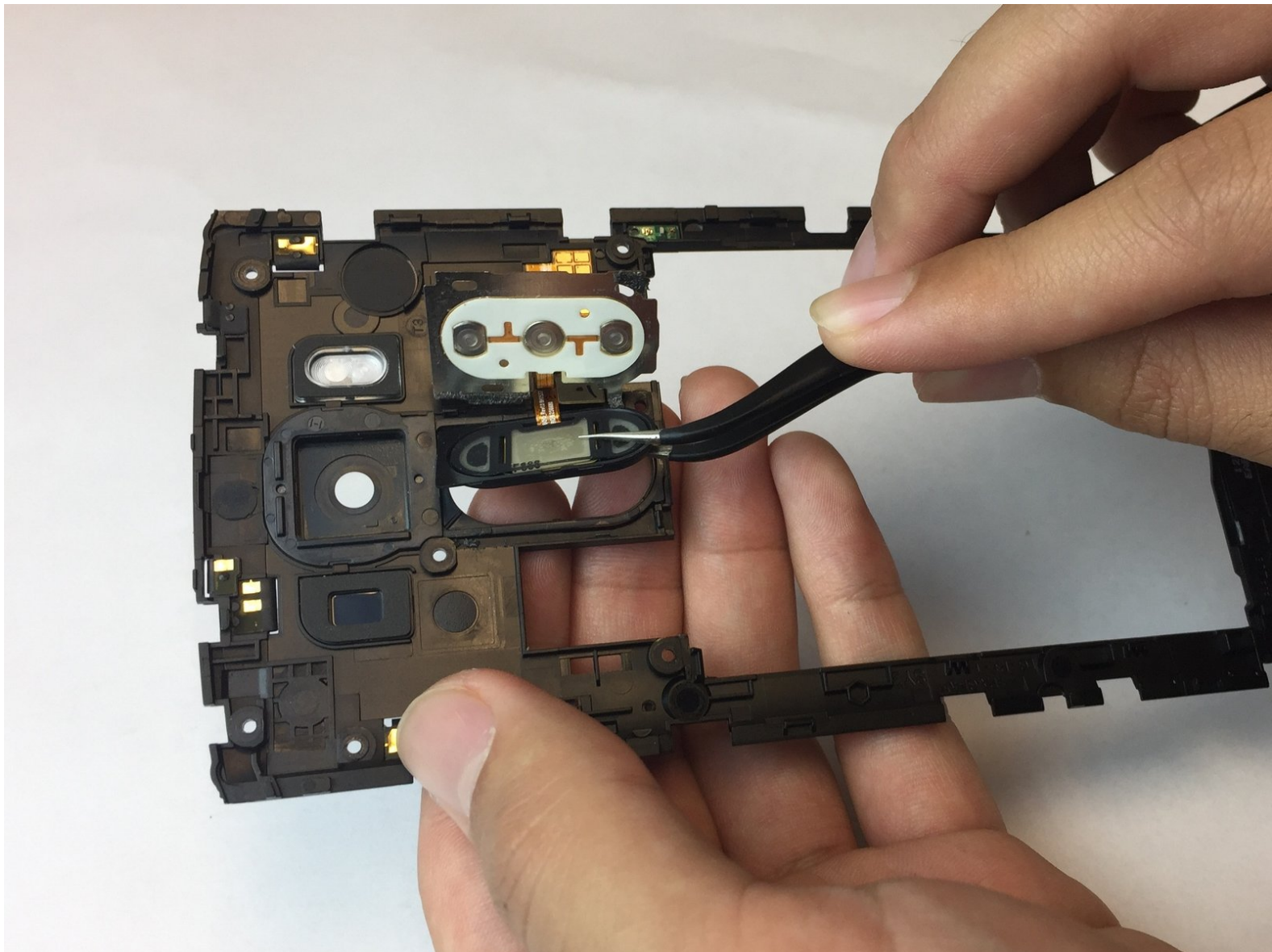




# LG V10 Fingerprint Sensor Replacement

This step-by-step guide shows how to replace the fingerprint sensor on the LG V10.

Written By: Joseph



## INTRODUCTION

Shutdown the LG V10 before replacing any component. If you've tried setting up fingerprint security on your LG V10 but it won't properly pick up your fingerprint, then the fingerprint sensor may need to be replaced.



### TOOLS:

- [Spudger](#) (1)
- [iFixit Opening Tools](#) (1)
- [Tweezers](#) (1)
- [B-7000 Glue](#) (1)
- [Phillips #000 Screwdriver](#) (1)



### PARTS:

- [Fingerprint sensor of LG V10](#) (1)

## Step 1 — Battery



- Wedge the flat end of the plastic spudger, or the tip of your finger, in between the back cover and the LG V10's charging port.
- ⚠ If using a spudger, it should not be in the charging port, but between the metal lining of the charging port and the back cover.
- Carefully lift up on the spudger or with your finger so that the back cover pops up. The rest of the back cover should easily come off by sliding a finger or spudger under the back cover and around the sides.

## Step 2



- There's an impression next to the battery for the user to use their finger to pry the battery out; pry the battery out using your finger or the flat end of the spudger.

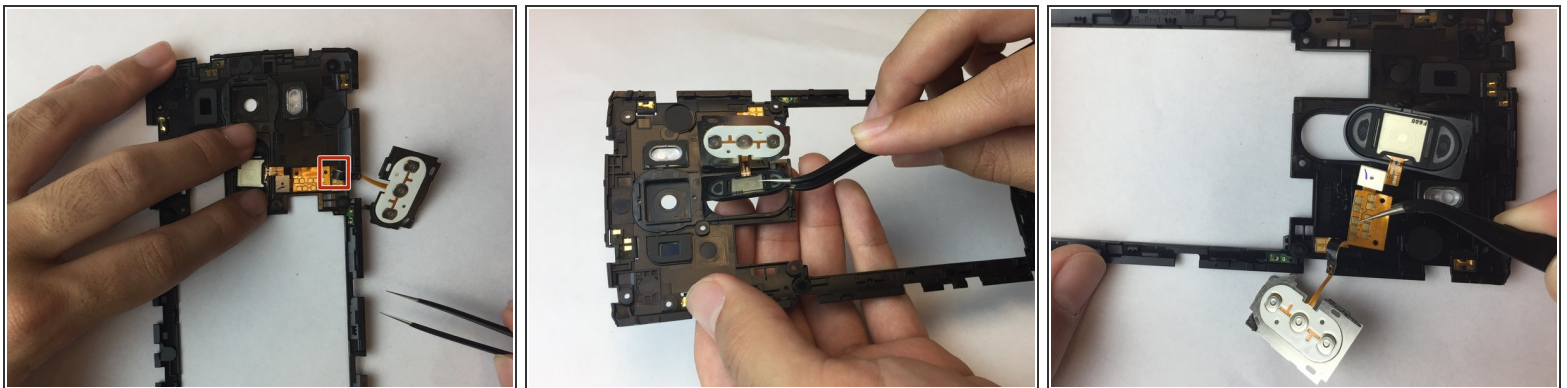


### Step 3 — Fingerprint Sensor



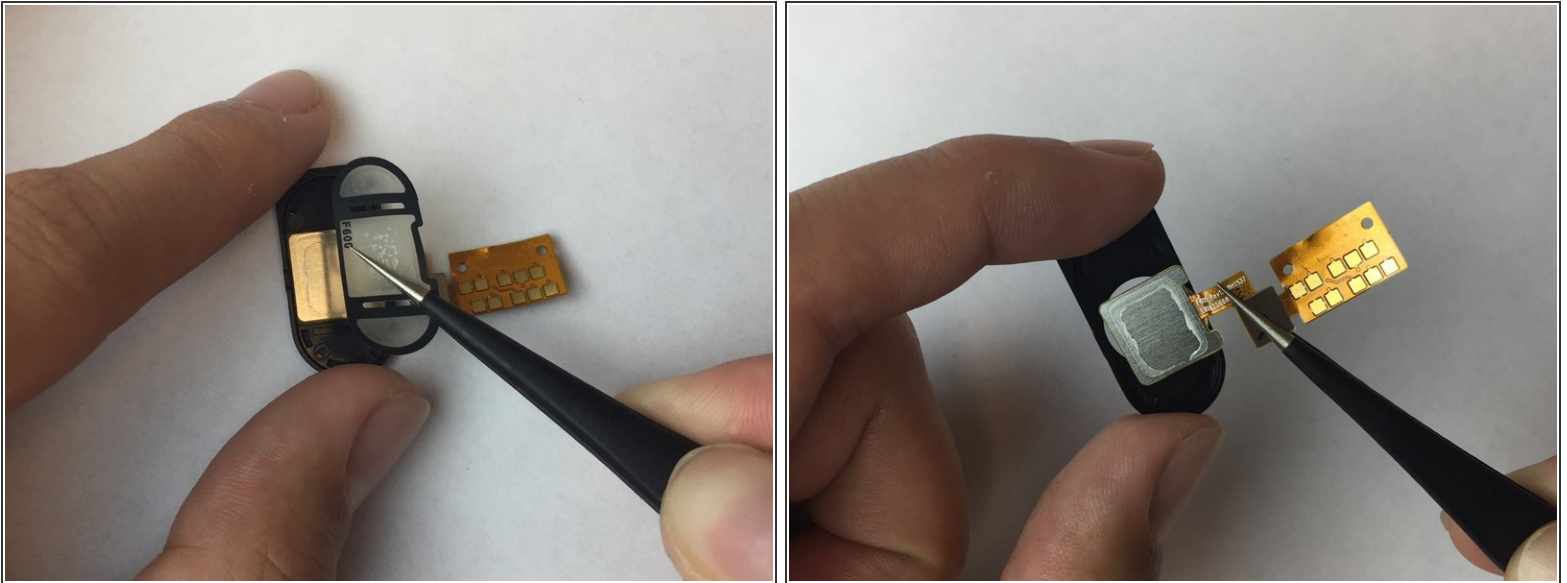
- Using a screwdriver with a J000 Phillips bit, remove the fourteen 3.175 mm screws.
- Using a plastic opening tool, pry part of the panel up starting from the sides of the battery slot.
- Use plastic tweezers to release the rest of the panel from plastic bits holding it in place and pry the panel up around the sides surrounding the fingerprint sensor and camera lens.

### Step 4



- Remove the back panel and flip it over to see a metal plate covering the power button and fingerprint sensor; use plastic tweezers to carefully pry up the metal plate along with the small strip connected to it up to the length indicated in the picture.
- Use your finger to pop the power button and fingerprint sensor out of its slot in the back panel; there should be a plastic frame around the power button/fingerprint sensor component.
- Use plastic tweezers to pry up and remove the plastic frame and strip connected to the power button and fingerprint sensor.

## Step 5



- Once removed, the power button/fingerprint sensor component has a plastic layer holding it in place, so use plastic tweezers to pry off this layer.
- Remove the power button/fingerprint sensor component from its plastic frame with plastic tweezers and replace it with the new one.
- Apply B-7000 glue on the power button/fingerprint sensor to attach the plastic layer that was removed from the old one.

After applying the adhesive and replacing the old fingerprint sensor, follow these instructions in reverse order to reassemble the LG V10.